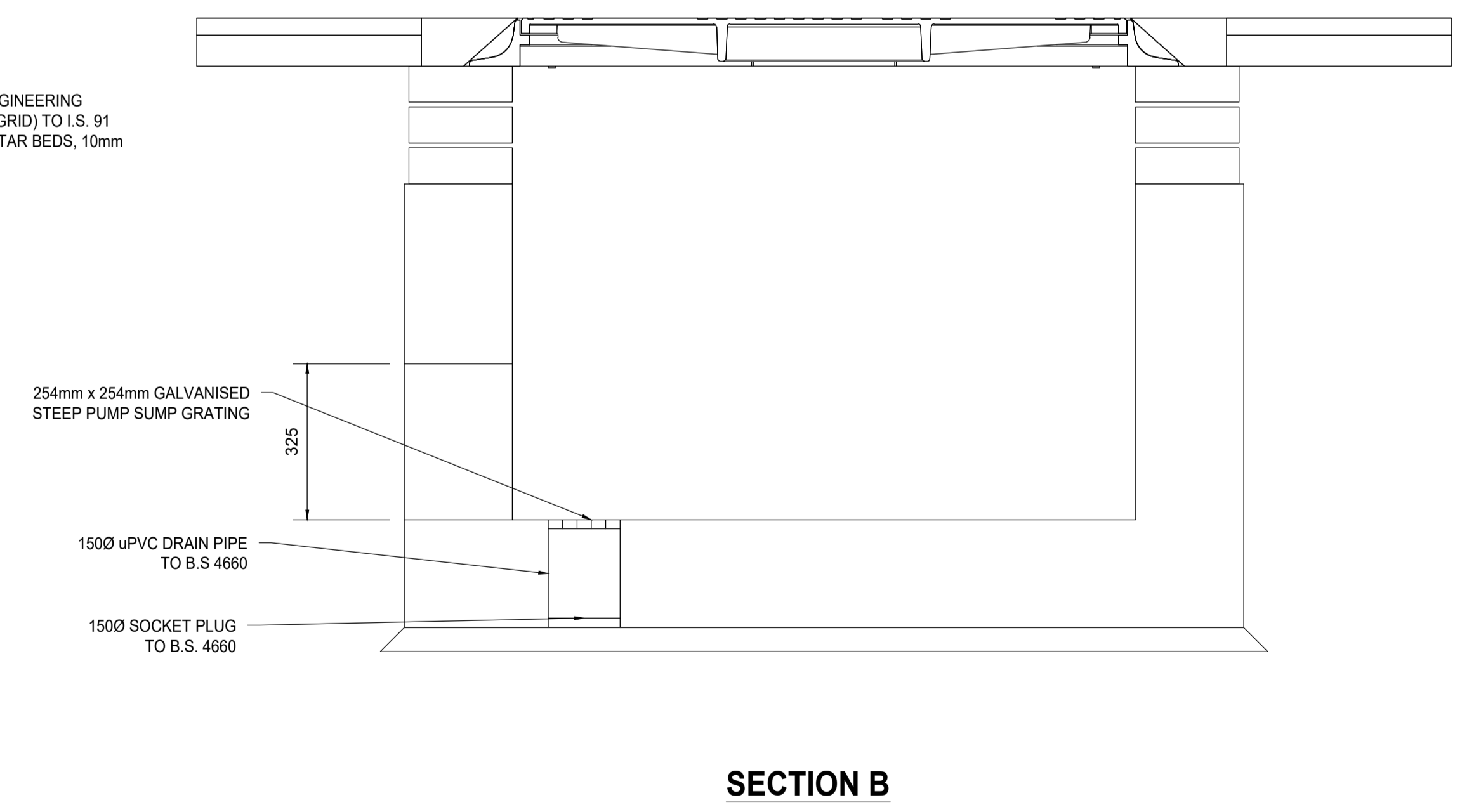
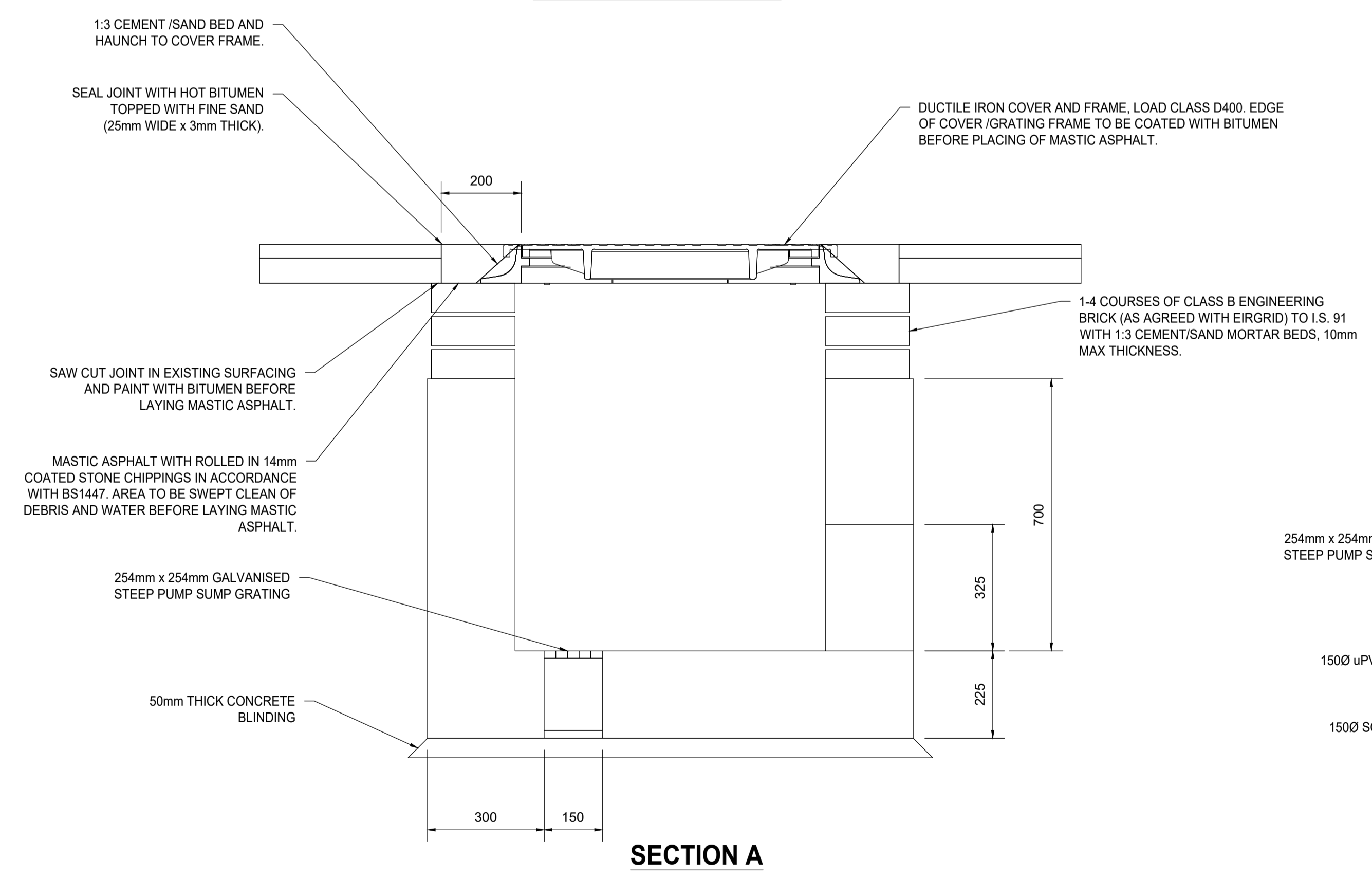


WALL OPENING 460 x 325 MAX ACTUAL SIZE TO BE FORMED TO SUIT DUCT ENTRIES. VOIDS TO BE SEALED AND SURFACES TO BE MADE GOOD WITH CLASS 1 MORTAR.



- NOTES:
- ALL DIMENSIONS ARE IN MILLIMETERS.
  - ALL MATERIALS AND WORKMANSHIP TO BE IN ACCORDANCE WITH THE TII SPECIFICATION FOR ROADWORKS.
  - REINFORCED CONCRETE TO BE MINIMUM GRADE C32 / 40. SULPHATE RESISTING CEMENT TO BE USED WHERE AGGRESSIVE SOIL CONDITIONS APPLY.
  - CARRIAGEWAY COVERS TO BE TO B.S. EN 124.
  - ALL COVERS SHALL HAVE APPROVED BADGE MARKING WITH 'EIRGRID' LOGO INCORPORATED IN THEM TO THE APPROVAL OF EIRGRID.
  - BRICK WORK TO BE CLASS B ENGINEERING, BEDS AND JOINTS TO BE CLASS 1 MORTAR.
  - FINAL POSITION OF LINK BOXES TO BE AGREED WITH EIRGRID.

- GENERAL NOTES:
- REFER TO DRAWINGS 281240-ARP-ON-CR-DR-PL-1100 TO 1164 FOR PROPOSED ONSHORE CABLE ROUTE.
  - TYPICAL DETAILS BASED ON EIRGRID FUNCTIONAL SPECIFICATIONS. REFER TO OFD-SSS-526, OFD-SSS-527, OFD-SSS-528, OFD-SSS-528, OFD-SSS-529, OFD-SSS-530, OFD-SSS-531, & OFD-SSS-532.
  - REFER TO DRAWINGS 281240-ARP-SO-XX-DR-PL-1168 FOR TYPICAL LAYOUT OF HORIZONTAL DIRECTIONAL DRILLING (HDD) COMPOUND.

Rev	Date	By	Chkd	Appd
C01	May 2024	EAM	RM	MD
D00	13.03.24	SB	RM	MD



Client  
North Irish Sea Array Windfarm Ltd.

**NISA**  
North Irish Sea Array

Project Title  
North Irish Sea Array Offshore Windfarm

Drawing Title  
TYPICAL LINK BOX CHAMBER DETAIL

Scale at A1	AS INDICATED
Role	Civil
Suitability	A2 - Approved for Planning
Arup Job No	281240
Name	2812400-ARP-ONS-XX-DR-PL-3008
Rev	C01