

Volume 10: Appendices (Onshore)

Appendix 24.1

Full and Partial Road Closure Diversion Routes

Contents

1.	Full Road Closure Diversion Routes	1
2.	Full Road Closure Bus Diversion Routes	12
3.	Partial Road Closure Diversion Routes	17

1. Full Road Closure Diversion Routes

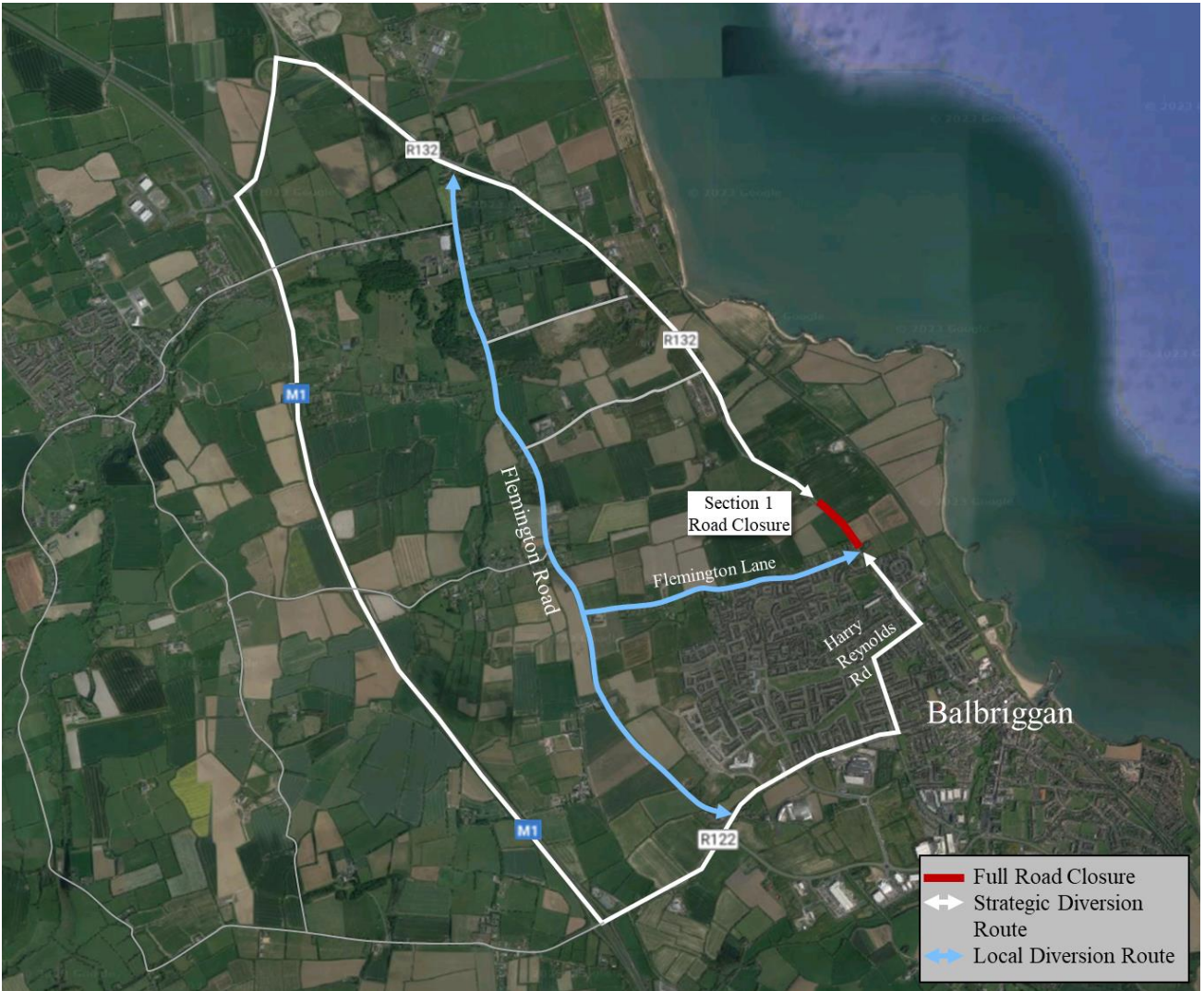


Image 1.1: Section 1 Full Road Closure Diversion Route

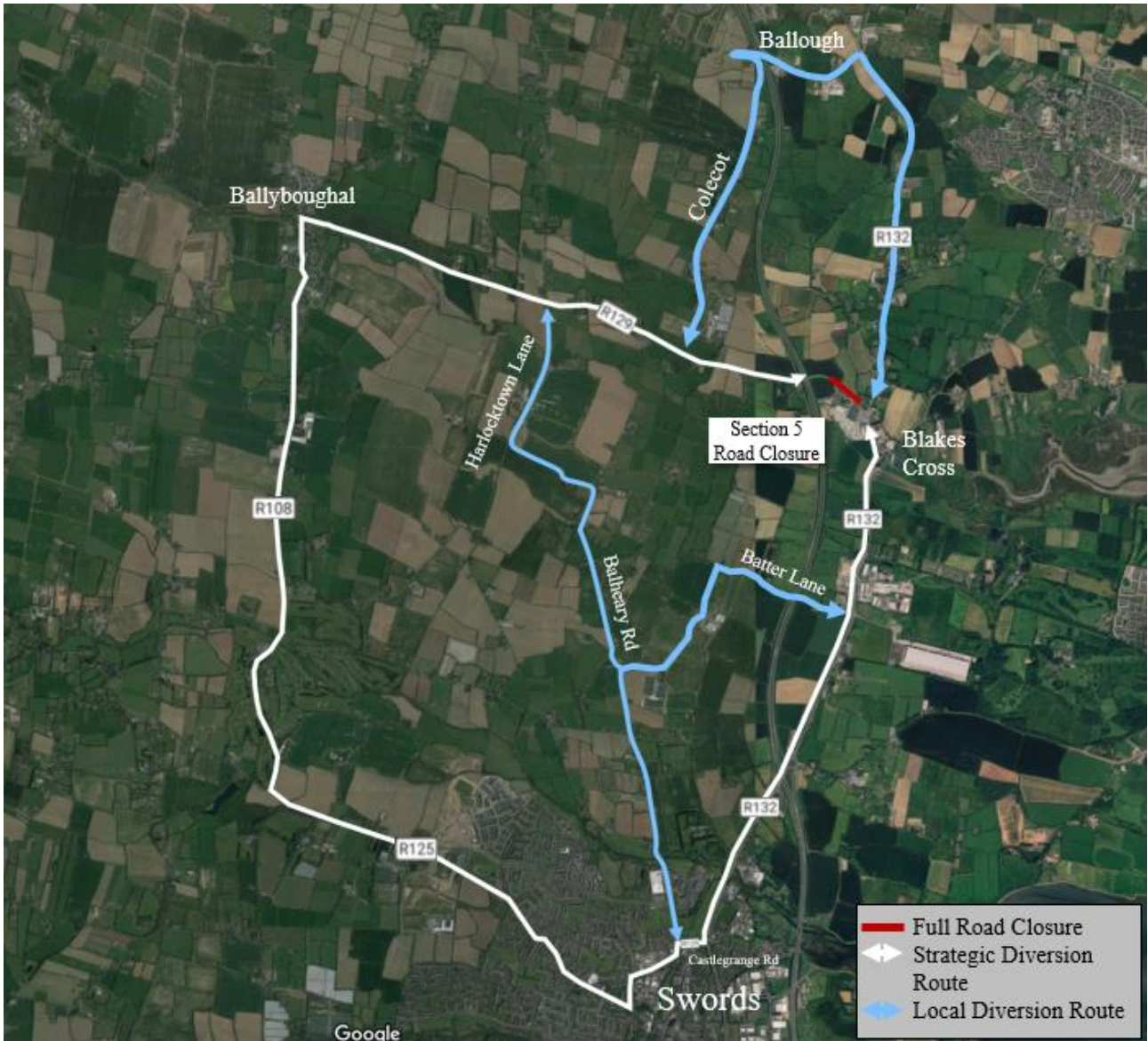


Image 1.2: Section 5 Full Road Closure Diversion Route

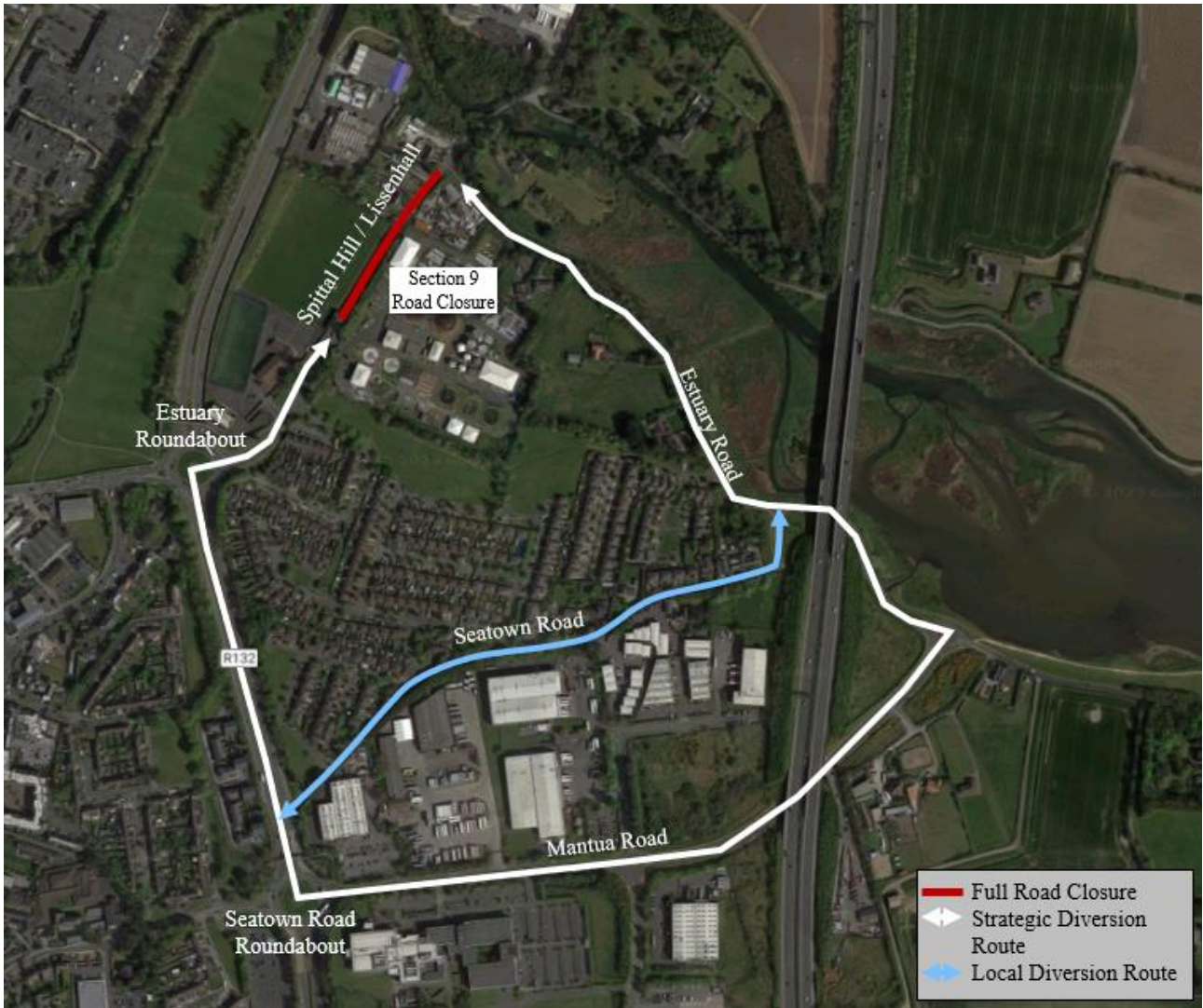


Image 1.3: Section 9 Full Road Closure Diversion Route

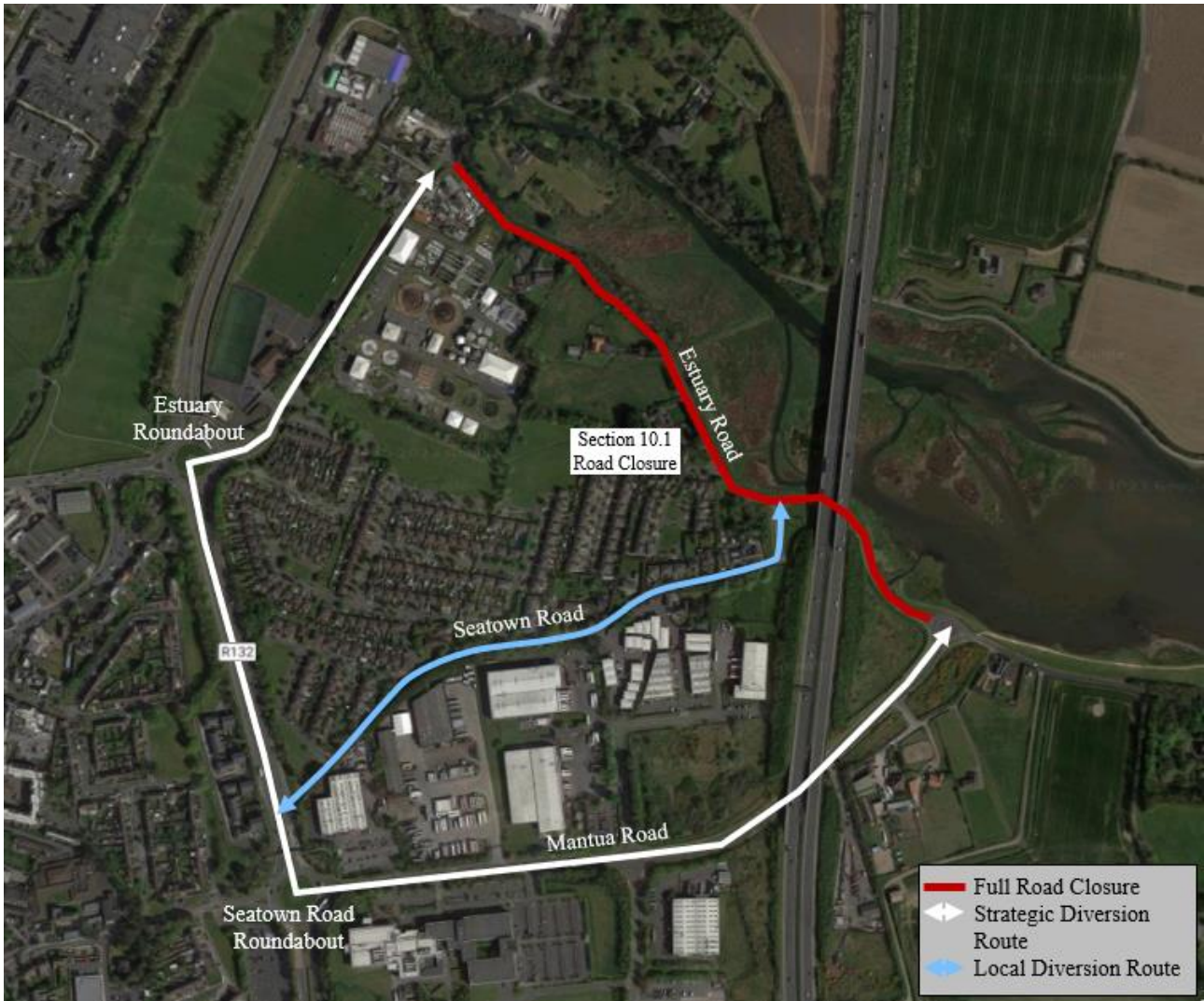


Image 1.4: Section 10.1 Full Road Closure Diversion Route



Image 1.5: Section 10.2 Full Road Closure Diversion Route

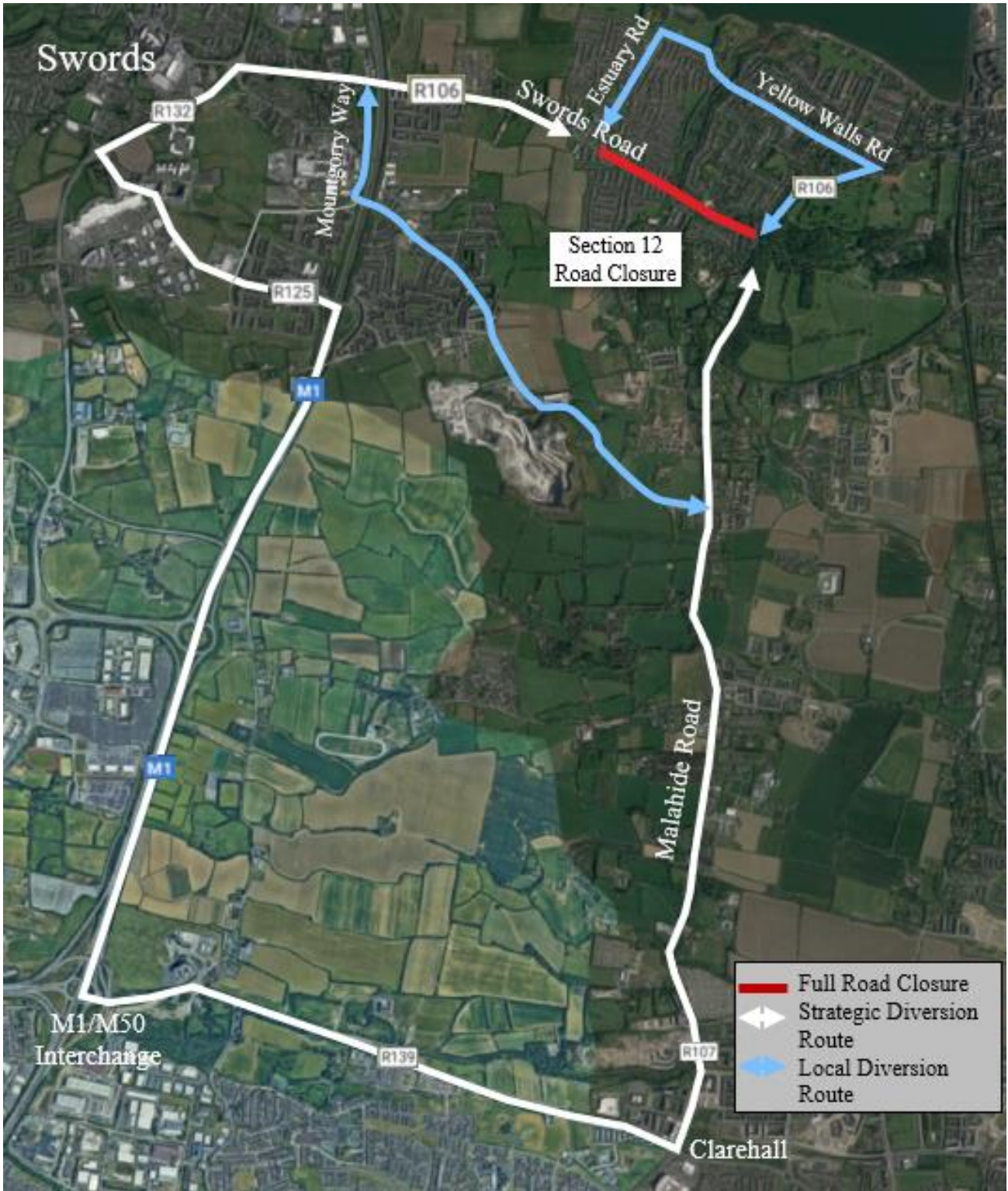


Image 1.6: Section 12 Full Road Closure Diversion Route



Image 1.7: Section 13 Full Road Closure Diversion Route

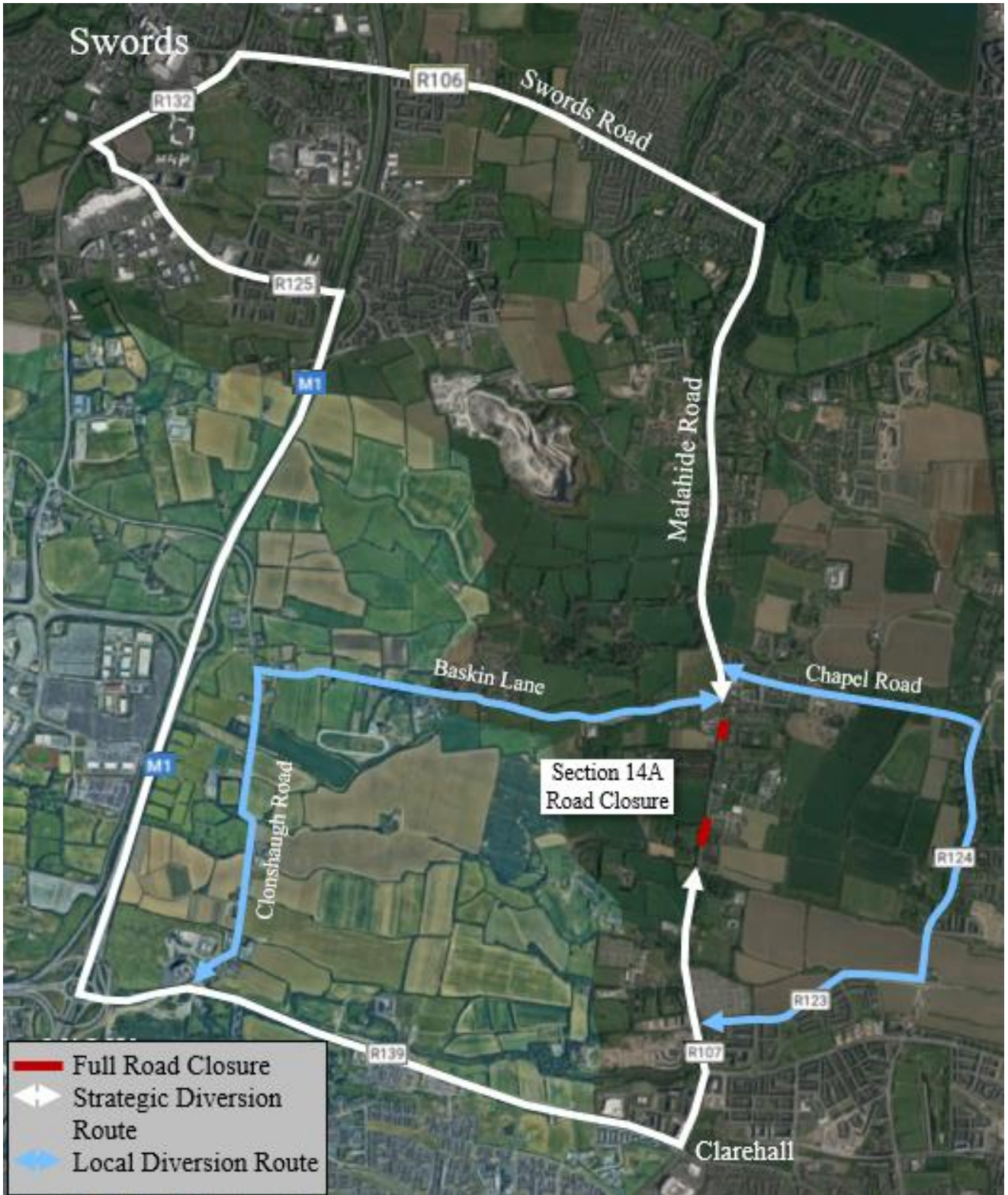


Image 1.8: Section 14A Full Road Closure Diversion Route

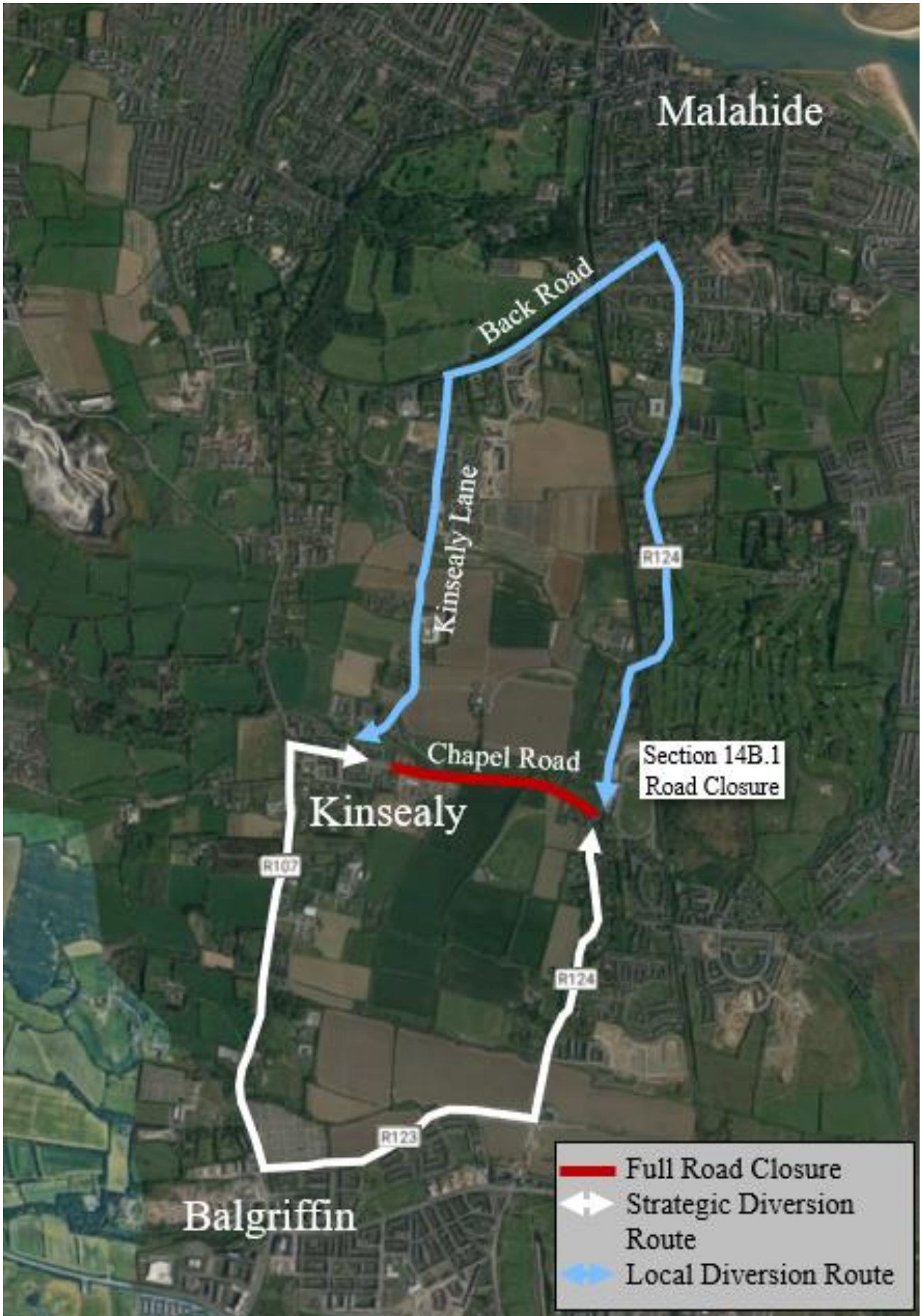


Image 1.9: Section 14B.1 Full Road Closure Diversion Route



Image 1.10: Section 14B.2 Full Road Closure Diversion Route

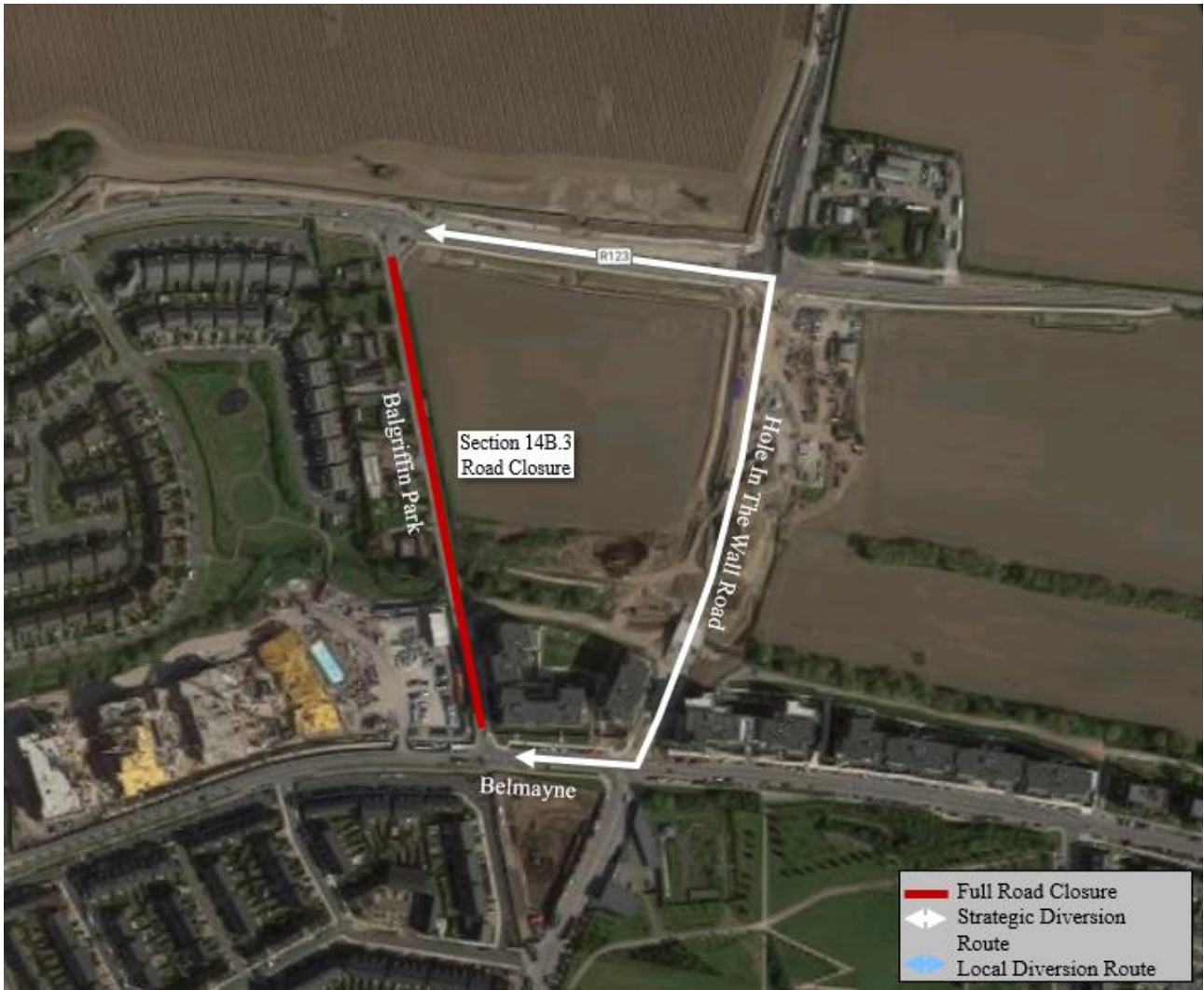


Image 1.11: Section 14B.3 Full Road Closure Diversion Route

2. Full Road Closure Bus Diversion Routes



Image 2.1: Section 1 Full Road Closure Bus Diversion Route

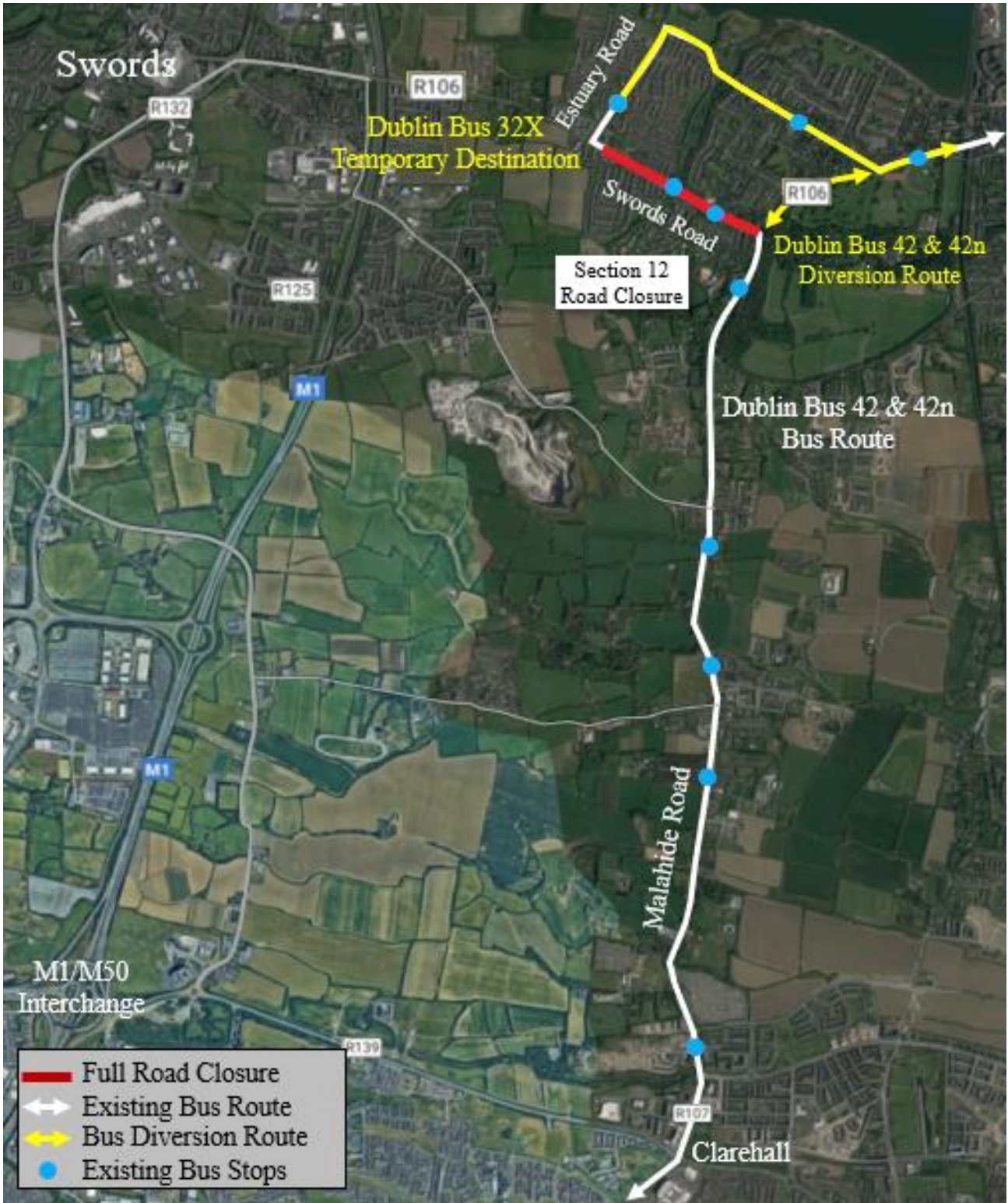


Image 2.2: Section 12 Full Road Closure Bus Diversion Route

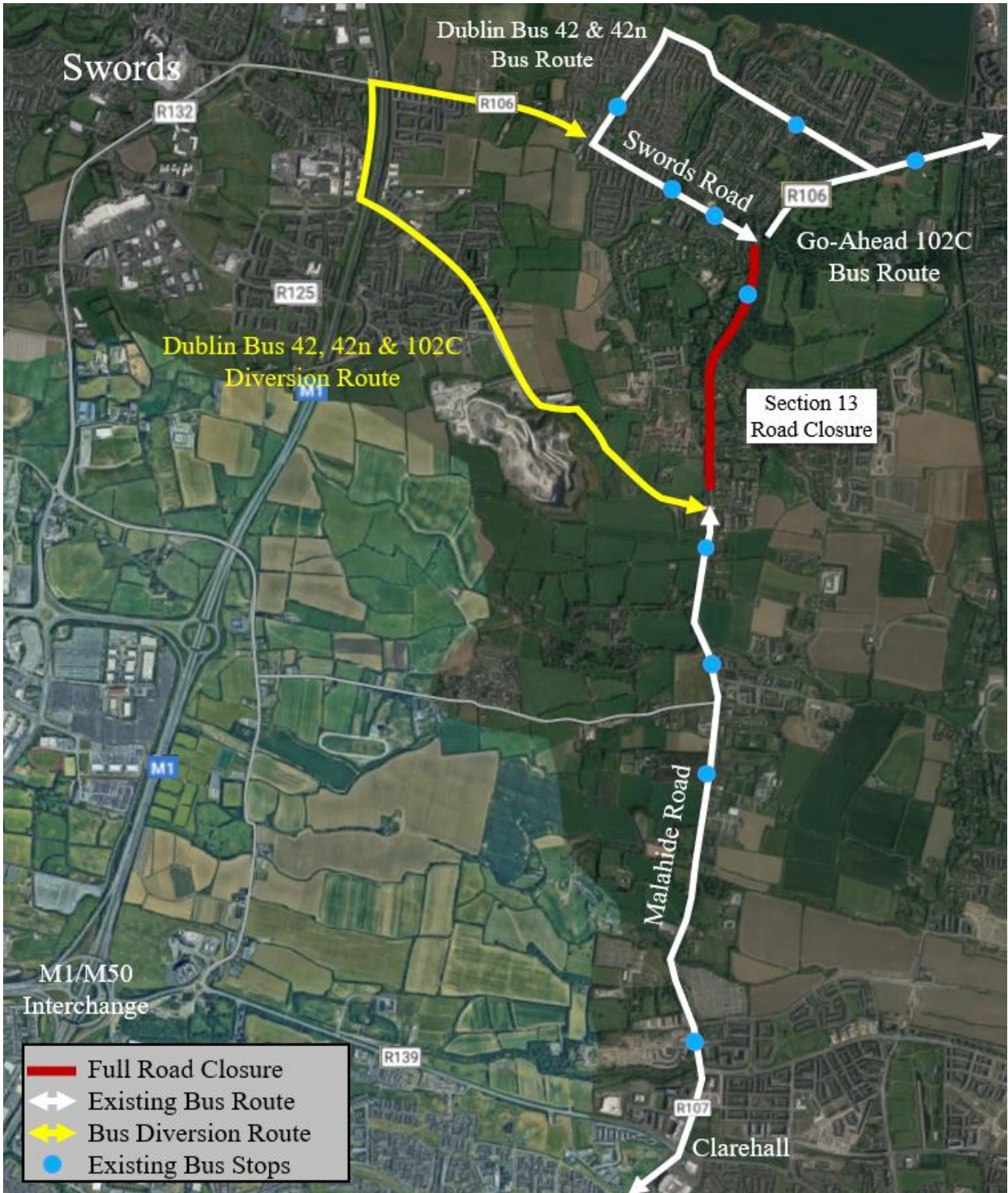


Image 2.3: Section 13 (north) Full Road Closure Bus Diversion Route

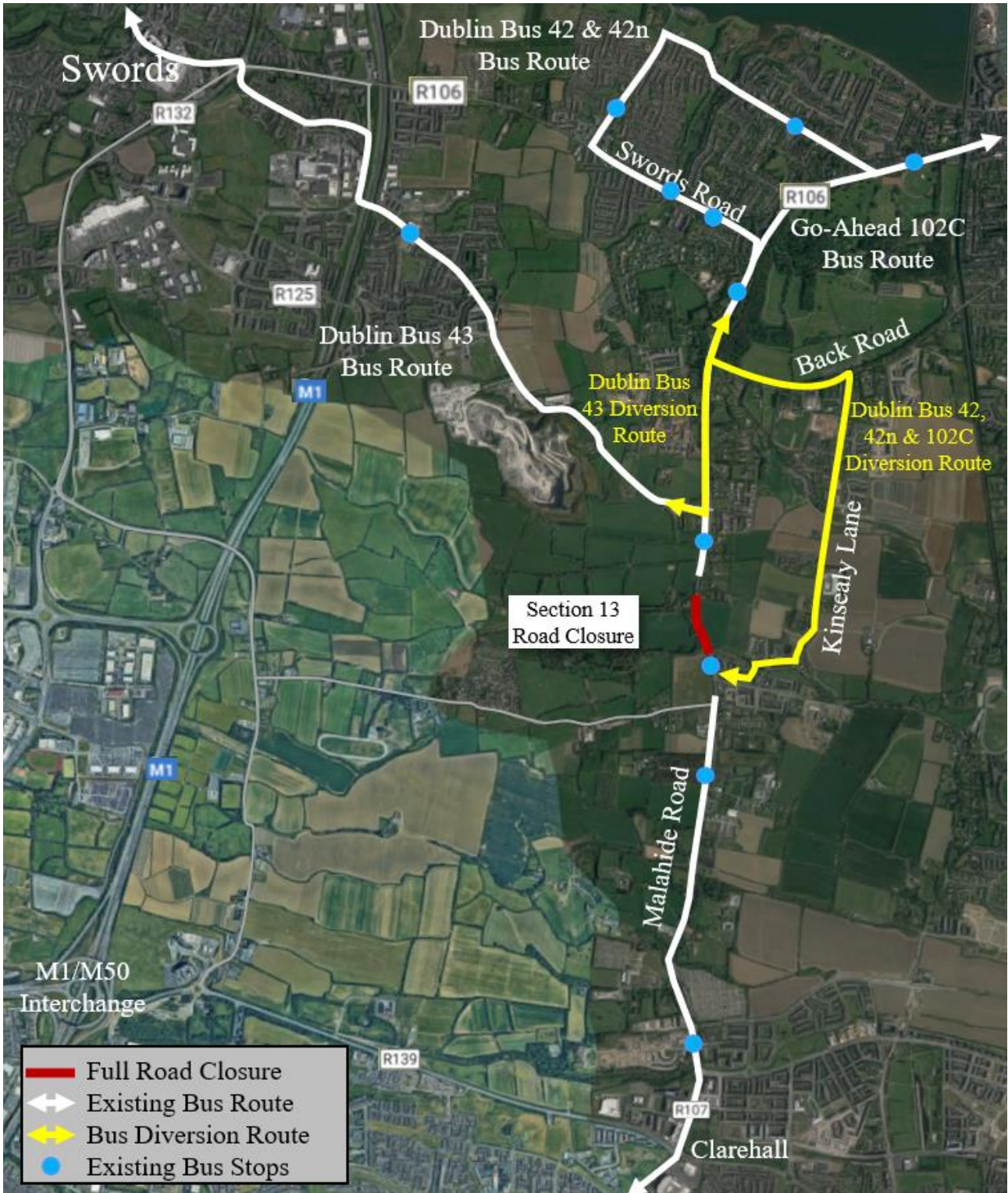


Image 2.4: Section 134 (south) Full Road Closure Bus Diversion Route

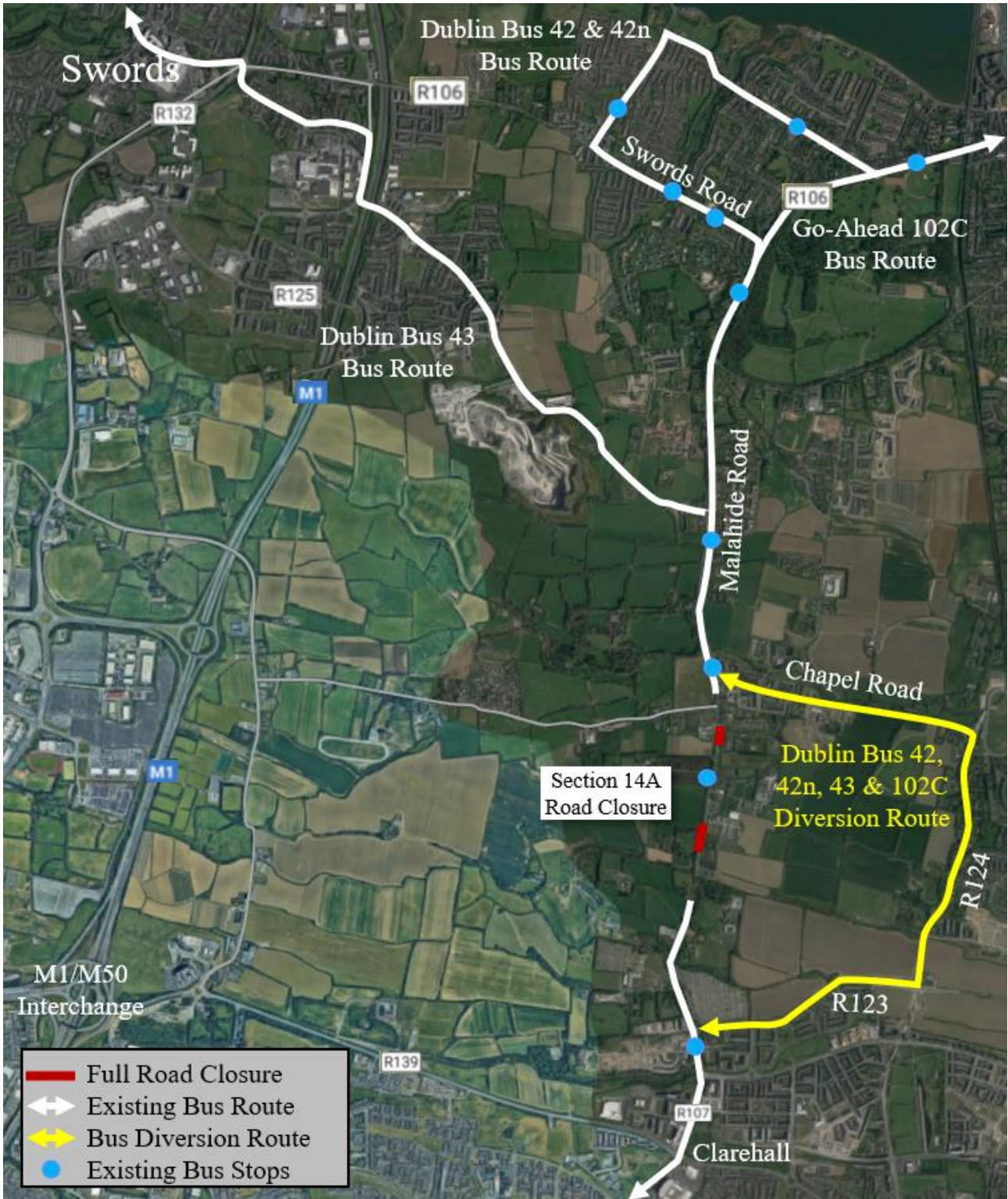


Image 2.5: Section 14A Full Road Closure Bus Diversion Route

3. Partial Road Closure Diversion Routes



Image 3.1: Section 2 Partial Road Closure Diversion Routes



Image 3.2: Section 3.1 Partial Road Closure Diversion Routes



Image 3.3: Section 3.2 Partial Road Closure Diversion Routes



Image 3.4: Section 6 Partial Road Closure Diversion Routes

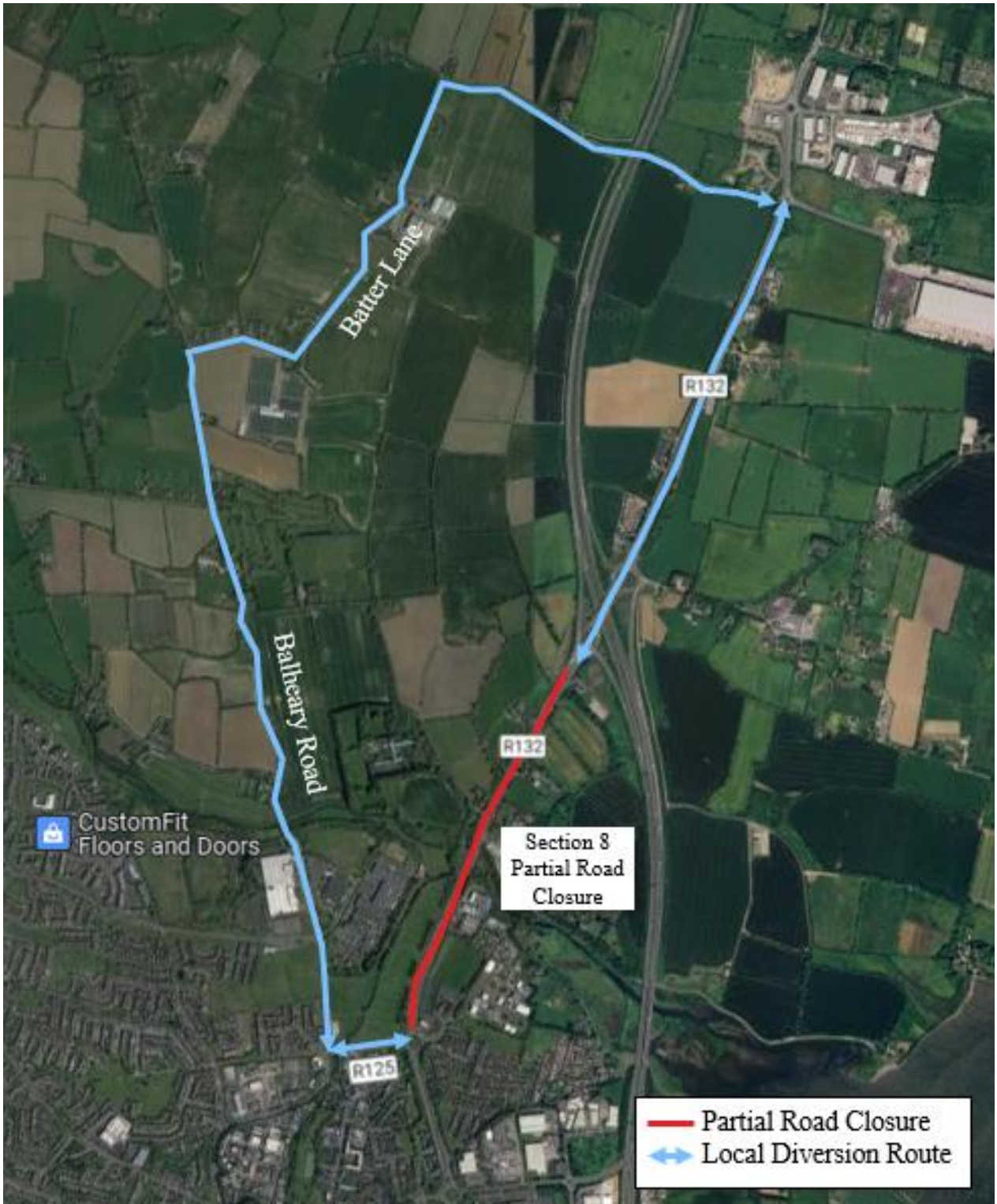


Image 3.5: Section 8 Partial Road Closure Diversion Routes



Image 3.6: Section 11 Partial Road Closure Diversion Routes

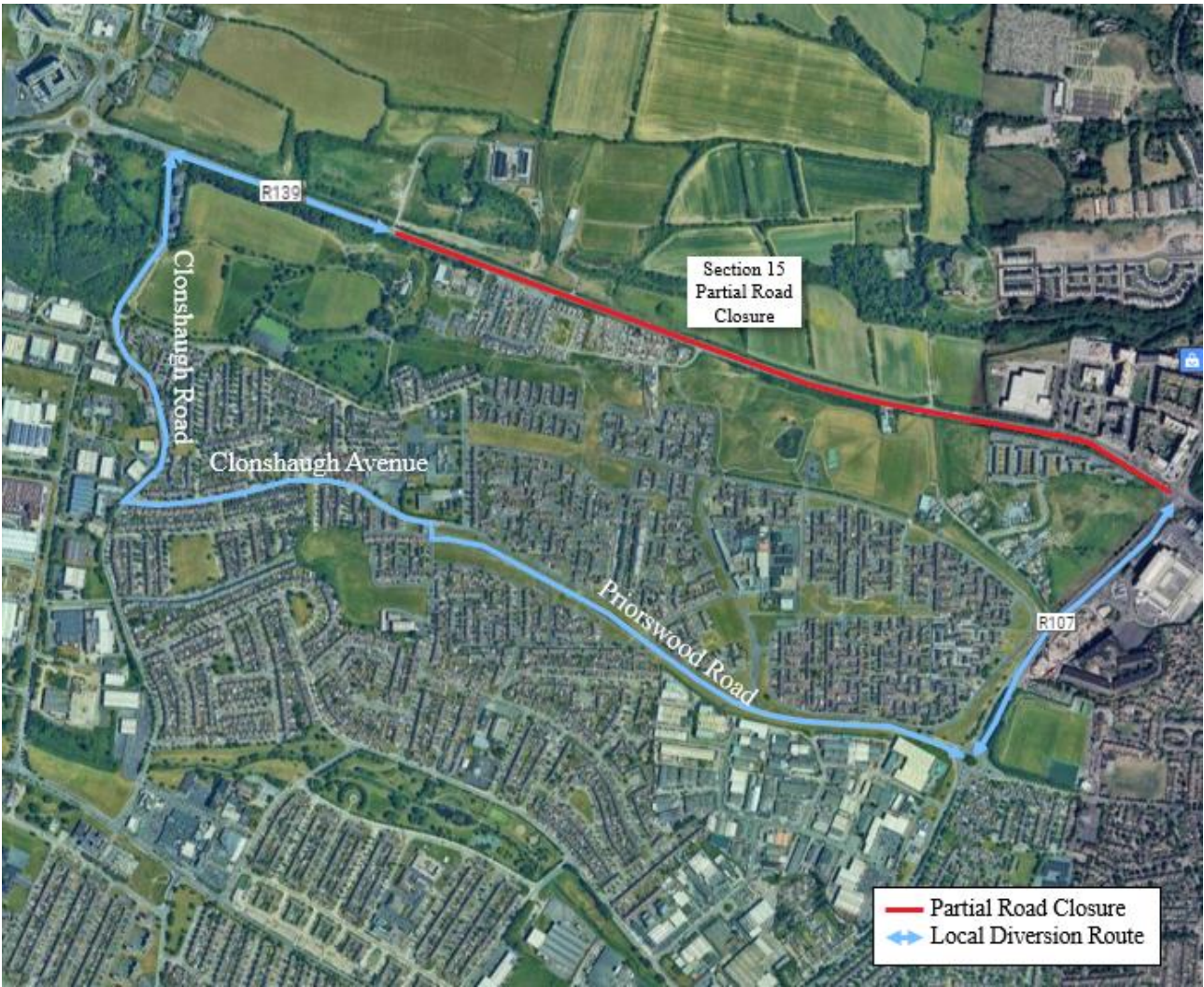


Image 3.7: Section 15 Partial Road Closure Diversion Routes