

Volume 2: Appendices

Appendix 6

Underwater Noise Modelling Report

Submitted to:

Carleen Collier
GoBe Consultants
Suites B2 & C2, Higher Mill
Higher Mill Lane
Buckfastleigh, Devon
TQ11 0EN
United Kingdom

Tel: +44 (0)1626 326 187

E-mail: Carleen@gobeconsultants.com

Website: www.gobeconsultants.com

Submitted by:

Tim Mason
Subacoustech Environmental Ltd
Unit 2, Muira Industrial Estate
William Street
Southampton
SO14 5QH
United Kingdom

Tel: +44 (0)23 80 236 330

E-mail: tim.mason@subacoustech.com

Website: www.subacoustech.com

North Irish Sea Array: Underwater noise assessment

8 May 2024



<i>Document No.</i>	<i>Date</i>	<i>Written</i>	<i>Approved</i>	<i>Distribution</i>
P291R0201	12/05/2023	R Barham	T Mason	C Collier (GoBe)
P291R0202	19/01/2024	R Barham	T Mason	C Collier (GoBe)
P291R0203	14/02/2024	R Barham	T Mason	C Collier (GoBe)
P291R0204	08/05/2024	R Barham	T Mason	C Collier (GoBe)

This report is a controlled document. The report documentation page lists the version number, record of changes, referencing information, abstract and other documentation details.

List of contents

1	Introduction.....	1
2	Background to underwater noise metrics.....	2
2.1	Underwater noise	2
2.1.1	Units of measurement	2
2.1.2	Sound Pressure Level (SPL).....	2
2.1.3	Peak Sound Pressure Level (SPL _{peak})	3
2.1.4	Sound Exposure Level (SEL).....	3
2.2	Analysis of environmental effects.....	4
2.2.1	Marine mammals.....	4
2.2.2	Fish.....	7
2.2.3	Seabed vibration	10
3	Modelling methodology	11
3.1	Modelling confidence	11
3.2	Modelling parameters.....	13
3.2.1	Modelling locations.....	13
3.2.2	WTG foundation and impact piling parameters.....	14
3.2.3	Apparent source levels.....	15
3.2.4	Environmental conditions	16
3.3	Cumulative SELs and fleeing receptors.....	16
3.3.1	The effect of input parameters on SELs and fleeing receptors.....	18
3.4	Precaution in underwater noise modelling	19
3.4.1	Source	19
3.4.2	Transmission	19
3.4.3	Receiver	19
4	Modelling results	20
4.1	Monopile foundations	21
4.1.1	NE location	22
4.1.2	NW location	23
4.1.3	SE location	24
4.1.4	SW location	26
4.2	Multi-leg foundations	27
4.2.1	NE location	28
4.2.2	NW location	30
4.2.3	SE location	32
4.2.4	SW location	34

5	Other noise sources	36
5.1	Noise-making activities	36
5.2	Operational WTG noise.....	40
5.3	UXO clearance	42
5.3.1	Estimation of underwater noise levels.....	42
5.3.2	Estimation of underwater noise propagation.....	43
5.3.3	Impact ranges.....	44
5.3.4	Summary	45
6	Summary and conclusions	46
	References	47
	Report documentation page.....	54

Units

Unit	Definition
dB	Decibel (sound pressure)
Hz	Hertz (frequency)
kg	Kilogram (mass)
kJ	Kilojoule (energy)
kHz	Kilohertz (frequency)
km	Kilometre (distance)
km ²	Square kilometres (area)
m	Metre (distance)
mms ⁻¹	Millimetres per second (particle velocity)
ms ⁻¹	Metres per second (speed)
MW	Megawatt (power)
Pa	Pascal (pressure)
Pa ² s	Pascal squared seconds (acoustic energy)
µPa	Micropascal (pressure)

Glossary

Term	Definition
Decibel (dB)	A customary scale commonly used (in various ways) for reporting levels of sound. A difference of 10 dB corresponds to a factor of 10 in sound power. The actual sound measurement is compared to a fixed reference level and the “decibel” value is defined to be $10 \log_{10}(\text{actual/reference})$ where $(\text{actual/reference})$ is a power ratio. Because sound power is usually proportional to sound pressure squared, the decibel value for sound pressure is $20 \log_{10}(\text{actual pressure/reference pressure})$. The standard reference for underwater sound is 1 micro pascal (μPa). The dB symbol is followed by a second symbol identifying the specific reference value (e.g., re 1 μPa).
Peak pressure	The highest pressure above or below ambient that is associated with a sound wave.
Peak-to-peak pressure	The sum of the highest positive and negative pressures that are associated with a sound wave.
Permanent Threshold Shift (PTS)	A permanent total or partial loss of hearing caused by acoustic trauma. PTS results in irreversible damage to the sensory hair cells of the ear, and thus a permanent reduction of hearing acuity.
Root Mean Square (RMS)	The square root of the arithmetic average of a set of squared instantaneous values. Used for presentation of an average sound pressure level.
Sound Exposure Level (SEL)	The constant sound level acting for one second, which has the same amount of acoustic energy, as indicated by the square of the sound pressure, as the original sound. It is the time-integrated, sound-pressure-squared level. SEL is typically used to compare transient sound events having different time durations, pressure levels, and temporal characteristics.
Sound Exposure Level, cumulative (SEL _{cum})	Single value for the collected, combined total of sound exposure over a specified time or multiple instances of a noise source.
Sound Exposure Level, single strike (SEL _{ss})	Calculation of the sound exposure level representative of a single noise impulse, typically a pile strike.
Sound Pressure Level (SPL)	The sound pressure level is an expression of sound pressure using the decibel (dB) scale; the standard frequency pressures of which are 1 μPa for water and 20 μPa for air.
Sound Pressure Level Peak (SPL _{peak})	The highest (zero-peak) positive or negative sound pressure, in decibels.
Temporary Threshold Shift (TTS)	Temporary reduction of hearing acuity because of exposure to sound over time. Exposure to high levels of sound over relatively short time periods could cause the same level of TTS as exposure to lower levels of sound over longer time periods. The mechanisms underlying TTS are not well understood, but there may be some temporary damage to the sensory cells. The duration of TTS varies depending on the nature of the stimulus.
Unweighted sound level	Sound levels which are “raw” or have not been adjusted in any way, for example to account for the hearing ability of a species.
Weighted sound level	A sound level which has been adjusted with respect to a “weighting envelope” in the frequency domain, typically to make an unweighted level relevant to a particular species. Examples of this are the dB(A), where the overall sound level has been adjusted to account for the hearing ability of humans in air, or the filters used by Southall <i>et al.</i> (2019) for marine mammals.

Acronyms

Acronym	Definition
ADD	Acoustic Deterrent Device
BGS	British Geological Survey
ECC	Export Cable Corridor
EIA	Environmental Impact Assessment
EMODnet	European Marine Observation and Data Network
FPSO	Floating Production Storage and Offloading
GIS	Geographic Information System
HE	High Explosive
HF	High-Frequency Cetaceans (from Southall <i>et al.</i> , 2019)
IB	Infrastructure Boundary
INSPIRE	Impulse Noise Sound Propagation and Range Estimator (Subacoustech Environmental's noise model for estimating impact piling noise)
LF	Low-Frequency Cetaceans (from Southall <i>et al.</i> , 2019)
MTD	Marine Technology Directorate
NISA	North Irish Sea Array
NOAA	National Oceanic and Atmospheric Administration
NMFS	National Marine Fisheries Service
NPL	National Physical Laboratory
OWF	Offshore Wind Farm
PCW	Phocid Carnivores in Water (from Southall <i>et al.</i> , 2019)
PPV	Peak Particle Velocity
PTS	Permanent Threshold Shift
RLB	Red Line Boundary
RMS	Root Mean Square
SE	Sound Exposure
SEL	Sound Exposure Level
SEL _{cum}	Cumulative Sound Exposure Level
SEL _{ss}	Single Strike Sound Exposure Level
SPL	Sound Pressure Level
SPL _{peak}	Peak Sound Pressure Level
SPL _{peak-to-peak}	Peak-to-peak Sound Pressure Level
SPL _{RMS}	Root Mean Square Sound Pressure Level
TNT	Trinitrotoluene (explosive)
TTS	Temporary Threshold Shift
UXO	Unexploded Ordnance
VHF	Very High-Frequency Cetaceans (from Southall <i>et al.</i> , 2019)
WTG	Wind Turbine Generator

1 Introduction

The North Irish Sea Array (NISA) Offshore Wind Farm (hereafter referred to as the 'proposed development') is located off the coast of Dublin, Meath and Louth counties in Ireland. As part of the Environmental Impact Assessment (EIA) process, Subacoustech Environmental Ltd. have undertaken detailed underwater noise modelling and analysis in relation to marine mammals and fish.

The proposed development array area covers an area of approximately 89 km² and is situated 11 km from the shore on the east of Ireland at its closest point.

This report presents a detailed assessment of the potential underwater noise during the construction and operation of the proposed development, and includes the following:

- Background information covering the units used for measuring and assessing underwater noise and a review of the underwater noise metrics and criteria used to assess the possible environmental effect in marine receptors (section 2);
- Discussion of the modelling approach, input parameters and assumptions for the detailed noise modelling undertaken (section 3);
- Presentation and interpretation of the detailed subsea noise modelling for impact piling with regards to its effect on marine mammals and fish (section 4);
- Noise modelling of the other noise sources expected to be present around the construction and operation of the proposed development, including cable laying, trenching, dredging, rock placement, vessel movements, drilling, operational WTG noise and unexploded ordnance (UXO) clearance (section 5); and
- Summary and conclusions (section 6).

Additional modelling results are presented in Appendix A.

2 Background to underwater noise metrics

2.1 Underwater noise

Sound travels much faster in water (approximately 1500 ms^{-1}) than in air (340 ms^{-1}). Since water is a relatively incompressible, dense medium, the pressure associated with underwater sound tends to be much higher than in air. It should be noted that stated underwater noise levels should not be confused with noise levels in air, which use a different scale.

2.1.1 Units of measurement

Sound measurements underwater are usually expressed using the decibel (dB) scale, which is a logarithmic measure of sound. A logarithmic scale is used because, rather than equal increments of sound having an equal increase in effect, typically each doubling of sound level will cause a roughly equal increase of “loudness.”

Any quantity expressed in this scale is termed a “level.” If the unit is sound pressure, expressed on the dB scale, it will be termed a “sound pressure level.”

The fundamental definition of the dB scale is given by:

$$Level = 10 \times \log_{10} \left(\frac{Q}{Q_{ref}} \right)$$

where Q is the quantity being expressed on the scale, and Q_{ref} is the reference quantity.

The dB scale represents a ratio. It is therefore used with a reference unit, which expresses the base from which the ratio is expressed. The reference quantity is conventionally smaller than the smallest value to be expressed on the scale so that any level quoted is positive. For example, a reference quantity of $20 \mu\text{Pa}$ is used for sound in air since that is the lower threshold of human hearing.

When used with sound pressure, the pressure value is squared. So that variations in the units agree, the sound pressure must be specified as units of Root Mean Square (RMS) pressure squared. This is equivalent to expressing the sound as:

$$Sound\ pressure\ level = 20 \times \log_{10} \left(\frac{P_{RMS}}{P_{ref}} \right)$$

For underwater sound, a unit of $1 \mu\text{Pa}$ is typically used as the reference unit (P_{ref}); a Pascal is equal to the pressure exerted by one Newton over one square metre, one micropascal equals one millionth of this.

2.1.2 Sound Pressure Level (SPL)

The Sound Pressure Level (SPL) is normally used to characterise noise of a continuous nature, such as drilling, boring, continuous wave sonar, or background sea and river noise levels. To calculate the SPL, the variation in sound pressure is measured over a specific period to determine the RMS level of the time-varying sound. The SPL can therefore be considered a measure of the average unweighted level of sound over the measurement period.

Where SPL is used to characterise transient pressure waves, such as that from impact piling, seismic airgun or underwater blasting, it is critical that the period over which the RMS level is calculated is quoted. For instance, in the case of a pile strike lasting a tenth of a second, the mean taken over a tenth of a second will be ten times higher than the mean averaged over one second. Often, transient sounds such as these are quantified using “peak” SPLs or Sound Exposure Levels (SELs).

Unless otherwise defined, all SPL noise levels in this report are referenced to $1 \mu\text{Pa}$.

2.1.3 Peak Sound Pressure Level (SPL_{peak})

Peak SPLs are often used to characterise transient sound from impulsive sources, such as percussive impact piling. SPL_{peak} is calculated using the maximum variation of the pressure from positive to zero within the wave. This represents the maximum change in positive pressure (differential pressure from positive to zero) as the transient pressure wave propagates.

A further variation of this is the peak-to-peak SPL ($SPL_{peak-to-peak}$) where the maximum variation of the pressure from positive to negative is considered. Where the wave is symmetrically distributed in positive and negative pressure, the peak-to-peak pressure will be twice the peak level, or 6 dB higher (see section 2.1.1).

2.1.4 Sound Exposure Level (SEL)

When considering the noise from transient sources, the issue of the duration of the pressure wave is often addressed by measuring the total acoustic energy (energy flux density) of the wave. This form of analysis was used by Bebb and Wright (1953, 1954a, 1954b, 1955), and later by Rawlins (1987), to explain the apparent discrepancies in the biological effect of short and long-range blast waves on human divers. More recently, this form of analysis has been used to develop criteria for assessing injury ranges for fish and marine mammals from various noise sources (Popper *et al.*, 2014; Southall *et al.*, 2019).

The SEL sums the acoustic energy over a measurement period, and effectively takes account of both the SPL of the sound and the duration it is present in the acoustic environment. Sound Exposure (SE) is defined by the equation:

$$SE = \int_0^T p^2(t) dt$$

where p is the acoustic pressure in Pascals, T is the total duration of sound in seconds, and t is time in seconds. The SE is a measurement of acoustic energy and has units of Pascal squared seconds (Pa^2s).

To express the SE on a logarithmic scale by means of a dB, it must be compared with a reference acoustic energy (p_{ref}^2) and a reference time (T_{ref}). The SEL is then defined by:

$$SEL = 10 \times \log_{10} \left(\frac{\int_0^T p^2(t) dt}{p_{ref}^2 T_{ref}} \right)$$

By using a common reference pressure (p_{ref}) of 1 μPa for assessments of underwater noise, the SEL and SPL can be compared using the expression:

$$SEL = SPL + 10 \times \log_{10} T$$

where the SPL is a measure of the average level of broadband noise and the SEL sums the cumulative broadband noise energy.

This means that, for continuous sounds of less than (i.e., fractions of) one second, the SEL will be lower than the SPL. For periods greater than one second, the SEL will be numerically greater than the SPL (i.e., for a continuous sound of 10 seconds duration, the SEL will be 10 dB higher than the SPL; for a sound of 100 seconds duration the SEL will be 20 dB higher than the SPL, and so on).

Where a single impulse noise such as the soundwave from a pile strike is considered in isolation, this can be represented by a "single strike" SEL or SEL_{ss} . A cumulative SEL, or SEL_{cum} , accounts for the exposure from multiple impulses or pile strikes over time, where the number of impulses replaces the T in the equation above, leading to:

$$SEL_{cum} = SEL + 10 \times \log_{10} X$$

Where SEL is the sound exposure level of one impulse and X is the total number of impulses or strikes. Unless otherwise defined, all SEL noise levels in this report are referenced to $1 \mu\text{Pa}^2\text{s}$.

2.2 Analysis of environmental effects

Over the last 20 years it has become increasingly evident that noise from human activities in and around underwater environments can have an impact on the marine species in the area. The extent to which intense underwater sound might cause adverse impacts in species is dependent upon the incident sound level, source frequency, duration of exposure, and/or repetition rate of an impulsive sound (see, for example, Hastings and Popper, 2005). As a result, scientific interest in the hearing abilities of aquatic species has increased. Studies are primarily based on evidence from high level sources of underwater noise such as blasting or impact piling, as these sources are likely to have the greatest immediate environmental impact and therefore the clearest observable effects, although interest in chronic noise exposure is increasing.

The impacts of underwater sound on marine species can be broadly summarised as follows:

- Physical traumatic injury and fatality;
- Auditory injury (either permanent or temporary); and
- Disturbance.

The following sections discuss the underwater noise criteria used in this study with respect to species of marine mammals and fish that may be present around the proposed development.

The main metrics and criteria that have been used in this study to aid assessment of potential significant environmental effects come from two key papers covering underwater noise and its effects:

- Southall *et al.* (2019) marine mammal exposure criteria; and
- Popper *et al.* (2014) sound exposure guidelines for fishes and sea turtles.

In addition, the NOAA (2005) criterion for Level B harassment has been included to help assess behavioural disturbance in marine mammals.

At the time of writing these include the most up-to-date and authoritative criteria for assessing environmental effects for use in impact assessments.

2.2.1 *Marine mammals*

The Southall *et al.* (2019) paper is effectively an update of the previous Southall *et al.* (2007) paper and provides identical thresholds to those from the National Marine Fisheries Service (NMFS) (2018) guidance for marine mammals, although it describes the marine mammal categories slightly differently.

The Southall *et al.* (2019) guidance categorises marine mammals into groups of similar species and applies filters to the unweighted noise to approximate the hearing sensitivities of the receptor in question. The hearing groups given by Southall *et al.* (2019) are summarised in Table 2-1 and Figure 2-1. Further groups for sirenians and other marine carnivores in water are given, but these have not been included in this study as those species are not commonly found in the Irish Sea.

Table 2-1 Marine mammal hearing groups (from Southall *et al.*, 2019)

Hearing group	Generalised hearing range	Example species
Low-frequency cetaceans (LF)	7 Hz to 35 kHz	Baleen whales
High-frequency cetaceans (HF)	150 Hz to 160 kHz	Dolphins, toothed whales, beaked whales, bottlenose whales (including bottlenose dolphin)
Very high-frequency cetaceans (VHF)	275 Hz to 160 kHz	True porpoises (including harbour porpoise)
Phocid carnivores in water (PCW)	50 Hz to 86 kHz	True seals (including harbour seals)

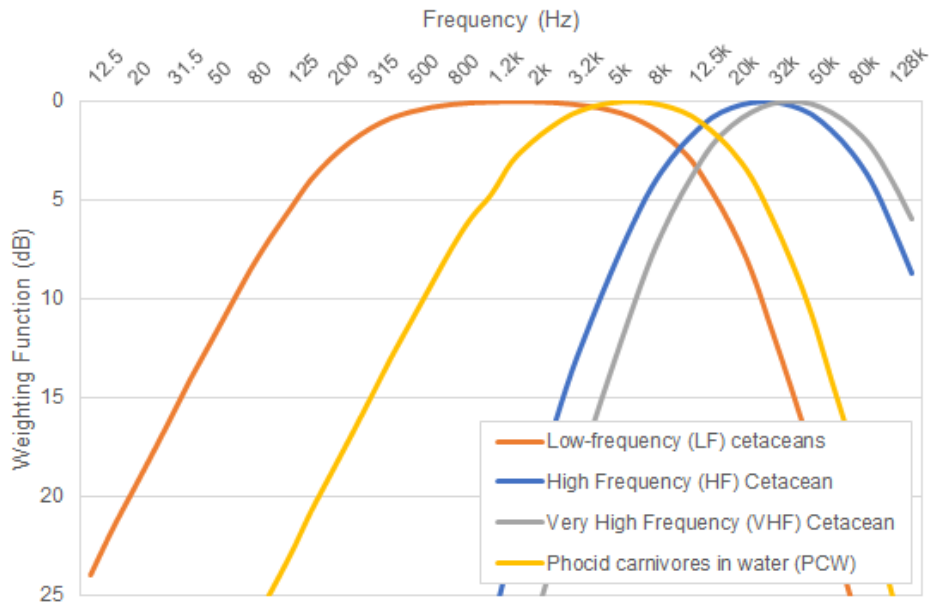


Figure 2-1 Auditory weighting functions for low-frequency cetaceans (LF), high-frequency cetaceans (HF), very high-frequency cetaceans (VHF), and phocid carnivores in water (PCW) (from Southall *et al.*, 2019)

Southall *et al.* (2019) also gives individual criteria based on whether the noise source is considered impulsive or non-impulsive. Southall *et al.* (2019) categorises impulsive noises as having high peak sound pressure, short duration, fast rise-time and broad frequency content at source, and non-impulsive sources as steady-state noise. Explosives, impact piling and seismic airguns are considered impulsive noise sources and sonars, vibro-piling, drilling and other low-level continuous noises are considered non-impulsive. A non-impulsive noise does not necessarily have to have a long duration.

Southall *et al.* (2019) presents single strike, unweighted peak criteria (SPL_{peak}) and cumulative weighted sound exposure criteria (SEL_{cum} , i.e., can include the accumulated exposure of multiple pulses) for both permanent threshold shift (PTS), where unrecoverable (but incremental) hearing damage may occur, and temporary threshold shift (TTS), where a temporary reduction in hearing sensitivity may occur in individual receptors. These dual criteria (SPL_{peak} and SEL_{cum}) are only used for impulsive noise: the criteria set giving the greatest calculated range is used as the PTS impact range.

As sound pulses propagate through the environment and dissipate, they also lose their most injurious characteristics (e.g., rapid pulse rise time and high peak sound pressure) and become more like a “non-pulse” at greater distances; Southall *et al.* (2019) briefly discusses this. Active research is currently underway into the identification of the distance at which the pulse can be considered effectively non-impulsive, and Hastie *et al.* (2019) have analysed a series of impulsive data to investigate it. Although the situation is complex, the paper reported that most of the signals crossed their threshold for rapid

rise time and high peak sound pressure characteristics associated with impulsive noise at around 3.5 km from the source. Southall (2021) discusses this further and suggests that the impulsive characteristics can correspond with significant energy content of the pulse above 10 kHz. This will naturally change depending on the noise source and the environment over which it travels.

Research by Martin *et al.* (2020) casts doubt on these findings, showing that noise in this category should be considered impulsive as long as it is above effective quiet, or a noise sufficiently low enough that it does not contribute significantly to any auditory impairment or injury. To provide as much detail as possible, both impulsive and non-impulsive criteria from Southall *et al.* (2019) have been included in this study.

Although the use of impact ranges derived using the impulsive criteria are recommended for all but clearly non-impulsive sources (such as drilling), it should be recognised that where calculated ranges are beyond 3.5 km, they would be expected to become increasingly less impulsive and harmful, and the impact range is therefore likely to be somewhere between the modelled impulsive and non-impulsive impact range. Where the impulsive impact range is significantly greater than 3.5 km, the non-impulsive range should be considered.

Table 2-2 and Table 2-3 present the unweighted SPL_{peak} and weighted SEL_{cum} criteria for marine mammals from Southall *et al.* (2019) covering both impulsive and non-impulsive noise.

Table 2-2 Single strike SPL_{peak} criteria for PTS and TTS in marine mammals (Southall *et al.*, 2019)

Southall <i>et al.</i> (2019)	Unweighted SPL_{peak} (dB re 1 μ Pa)	
	Impulsive	
	PTS	TTS
Low-frequency cetaceans (LF)	219	213
High-frequency cetaceans (HF)	230	224
Very high-frequency cetaceans (VHF)	202	196
Phocid carnivores in water (PCW)	218	212

Table 2-3 Impulsive and non-impulsive SEL_{cum} criteria for PTS and TTS in marine mammals (Southall *et al.*, 2019)

Southall <i>et al.</i> (2019)	Weighted SEL_{cum} (dB re 1 μ Pa ² s)			
	Impulsive		Non-impulsive	
	PTS	TTS	PTS	TTS
Low-frequency cetaceans (LF)	183	168	199	179
High-frequency cetaceans (HF)	185	170	198	178
Very high-frequency cetaceans (VHF)	155	140	173	153
Phocid carnivores in water (PCW)	185	170	201	181

Where SEL_{cum} thresholds are required for marine mammals, a fleeing animal model has been used. This assumes that a receptor, when exposed to high noise levels, will swim away from the noise source. A constant fleeing speed of 3.25 ms⁻¹ has been assumed for the low-frequency cetaceans (LF) group (Blix and Folkow, 1995), based on data for minke whale, and for other receptors, a constant rate of 1.5 ms⁻¹ has been assumed for fleeing, which is a cruising speed for a harbour porpoise (Otani *et al.*, 2000). These are considered highly precautionary assumptions as marine mammals are expected to

be able to swim much faster under stress conditions (Kastelein *et al.* 2018), especially at the start of any noisy process when the receptor will be closest.

Limited data is available for behavioural disturbance on species of marine mammal. To take this into account, the NOAA (2005) Level B (behavioural disturbance) harassment criterion for impulsive noise on marine mammals, 160 dB unweighted SPL_{RMS}, has been included to cover disturbance effects.

2.2.2 Fish

The large number of, and variation in, fish species leads to a greater challenge in production of a generic noise criterion, or range of criteria, for the assessment of noise impacts. The publication of Popper *et al.* (2014) provides an authoritative summary of the latest research and guidelines for fish exposure to sound and uses categories for fish that are representative of the species present in Irish waters.

The Popper *et al.* (2014) study groups species of fish by whether they possess a swim bladder, and whether it is involved in its hearing; groups for sea turtles and fish eggs and larvae are also included. The guidance also gives specific criteria (as both unweighted SPL_{peak} and unweighted SEL_{cum} values) for a variety of noise sources. (It is recognised that these are related to sound pressure, whereas more recent documents (e.g., Popper and Hawkins (2019) clearly state that many fish species are most sensitive to particle motion; this is discussed in section 2.2.2.1.)

For this study, criteria for impact piling, continuous noise sources, and explosions have been considered; these are summarised in Table 2-4 to Table 2-6.

Table 2-4 Criteria for mortality and potential mortal injury, recoverable injury, and TTS in species of fish from impact piling noise (Popper et al., 2014)

Type of animal	Mortality and potential mortal injury	Impairment	
		Recoverable injury	TTS
Fish: no swim bladder	> 219 dB SEL _{cum} > 213 dB SPL _{peak}	> 216 dB SEL _{cum} > 213 dB SPL _{peak}	>> 186 dB SEL _{cum}
Fish: swim bladder is not involved in hearing	210 dB SEL _{cum} > 207 dB SPL _{peak}	203 dB SEL _{cum} > 207 dB SPL _{peak}	> 186 dB SEL _{cum}
Fish: swim bladder involved in hearing	207 dB SEL _{cum} > 207 dB SPL _{peak}	203 dB SEL _{cum} > 207 dB SPL _{peak}	186 dB SEL _{cum}
Sea turtles	> 210 dB SEL _{cum} > 207 dB SPL _{peak}	See Table 2-7	
Eggs and larvae	> 210 dB SEL _{cum} > 207 dB SPL _{peak}		

Table 2-5 Criteria for recoverable injury and TTS in species of fish from continuous noise sources (Popper et al., 2014)

Type of animal	Impairment	
	Recoverable injury	TTS
Fish: swim bladder involved in hearing	170 dB SPL _{RMS} for 48 hrs	158 dB SPL _{RMS} for 12 hours

Table 2-6 Criteria for potential mortal injury in species of fish from explosions (Popper et al., 2014)

Type of animal	Mortality and potential mortal injury
Fish: no swim bladder	229 – 234 dB SPL _{peak}
Fish: swim bladder is not involved in hearing	229 – 234 dB SPL _{peak}
Fish: swim bladder involved in hearing	229 – 234 dB SPL _{peak}
Sea turtles	229 – 234 dB SPL _{peak}
Eggs and larvae	> 13 mms ⁻¹ peak velocity

Where insufficient data are available, Popper *et al.* (2014) also gives qualitative criteria that summarise the effect of the noise as having either a high, moderate, or low effect on an individual in either the near-field (tens of metres), intermediate-field (hundreds of metres), or far-field (thousands of metres). These qualitative effects are reproduced in Table 2-7 to Table 2-9.

Table 2-7 Summary of the qualitative effects on species of fish from impact piling noise (Popper et al., 2014) (N = Near-field; I = Intermediate-field; F = Far-field)

Type of animal	Impairment			Behaviour
	Recoverable injury	TTS	Masking	
Fish: no swim bladder	See Table 2-4		(N) Moderate (I) Low (F) Low	(N) High (I) Moderate (F) Low
Fish: swim bladder is not involved in hearing			(N) Moderate (I) Low (F) Low	(N) High (I) Moderate (F) Low
Fish: swim bladder involved in hearing			(N) High (I) High (F) Moderate	(N) High (I) High (F) Moderate
Sea turtles	(N) High (I) Low (F) Low	(N) High (I) Low (F) Low	(N) High (I) Moderate (F) Low	(N) High (I) Moderate (F) Low
Eggs and larvae	(N) Moderate (I) Low (F) Low	(N) Moderate (I) Low (F) Low	(N) Moderate (I) Low (F) Low	(N) Moderate (I) Low (F) Low

Table 2-8 Summary of the qualitative effects on fish from continuous noise from Popper et al. (2014) (N = Near-field; I = Intermediate-field; F = Far-field)

Type of animal	Mortality and potential mortal injury	Impairment			Behaviour
		Recoverable injury	TTS	Masking	
Fish: no swim bladder	(N) Low (I) Low (F) Low	(N) Low (I) Low (F) Low	(N) Moderate (I) Low (F) Low	(N) High (I) High (F) Moderate	(N) Moderate (I) Moderate (F) Low
Fish: swim bladder is not involved in hearing	(N) Low (I) Low (F) Low	(N) Low (I) Low (F) Low	(N) Moderate (I) Low (F) Low	(N) High (I) High (F) Moderate	(N) Moderate (I) Moderate (F) Low
Fish: swim bladder involved in hearing	(N) Low (I) Low (F) Low	See Table 2-5		(N) High (I) High (F) High	(N) High (I) Moderate (F) Low
Sea turtles	(N) Low (I) Low (F) Low	(N) Low (I) Low (F) Low	(N) Moderate (I) Low (F) Low	(N) High (I) High (F) Moderate	(N) High (I) Moderate (F) Low
Eggs and larvae	(N) Low (I) Low (F) Low	(N) Low (I) Low (F) Low	(N) Low (I) Low (F) Low	(N) High (I) Moderate (F) Low	(N) Moderate (I) Moderate (F) Low

Table 2-9 Summary of the qualitative effects on species of fish from explosions (Popper *et al.*, 2014) (N = Near-field; I = Intermediate-field; F = Far-field)

Type of animal	Impairment			Behaviour
	Recoverable injury	TTS	Masking	
Fish: no swim bladder	(N) High (I) Low (F) Low	(N) High (I) Moderate (F) Low	N/A	(N) High (I) Moderate (F) Low
Fish: swim bladder is not involved in hearing	(N) High (I) High (F) Low	(N) High (I) Moderate (F) Low	N/A	(N) High (I) High (F) Low
Fish: swim bladder involved in hearing	(N) High (I) High (F) Low	(N) High (I) High (F) Low	N/A	(N) High (I) High (F) Low
Sea turtles	(N) High (I) High (F) Low	(N) High (I) High (F) Low	N/A	(N) High (I) High (F) Low
Eggs and larvae	(N) High (I) Low (F) Low	(N) High (I) Low (F) Low	N/A	(N) High (I) Low (F) Low

Both fleeing animal and stationary animal models have been used to cover the SEL_{cum} criteria for fish. It is recognised that there is limited evidence for fish fleeing from high level noise sources in the wild, and it would reasonably be expected that the reaction would differ between species. Most species are likely to move away from a sound that is loud enough to cause harm (Dahl *et al.*, 2015; Popper *et al.*, 2014), some may seek protection in the sediment and others may dive deeper in the water column. For those species that flee, the speed chosen for this study of 1.5 ms⁻¹ is relatively slow in relation to data from Hirata (1999) and thus is considered somewhat conservative.

Although it is feasible that some species will not flee, those that are likely to remain are thought more likely to be benthic species or species without a swim bladder; these are the least sensitive species. For example, from Popper *et al.* (2014): “There is evidence (e.g., Goertner *et al.*, 1994; Stephenson *et al.*, 2010; Halvorsen *et al.*, 2012) that little or no damage occurs to fish without a swim bladder except at very short ranges from an in-water explosive event. Goertner (1978) showed that the range from an explosive event over which damage may occur to a non-swim bladder fish is in the order of 100 times less than that for swim bladder fish.”

Stationary animal modelling has been included in this study, based on research from Hawkins *et al.* (2014) and other modelling for similar EIA projects. However, basing the modelling on a stationary (zero flee speed) receptor is likely to greatly overestimate the potential risk to fish species, assuming that an individual would remain in the high noise level region of the water column for the whole duration of piling, especially when considering the precautionary nature of the parameters already built into the cumulative exposure calculations.

2.2.2.1 *Particle motion*

The criteria defined in the above section define the noise impacts on fish in terms of sound pressure or sound pressure-associated functions (i.e., SEL). It has been identified by researchers (e.g., Popper and Hawkins, 2019; Nedelec *et al.*, 2016; Radford *et al.*, 2012) that many species of fish, as well as invertebrates, actually detect particle motion rather than acoustic pressure. Particle motion describes the back-and-forth movement of a tiny theoretical ‘element’ of water, substrate or other media as a sound wave passes, rather than the pressure caused by the action of the force created by this movement. Particle motion is usually defined in reference to the velocity of the particle (often a peak particle velocity, PPV), but sometimes the related acceleration or displacement of the particle is used.

Note that species in the “Fish: swim bladder involved in hearing” category, the species most sensitive to noise, are sensitive to sound pressure.

Popper and Hawkins (2018) state that in derivation of the sound pressure-based criteria in Popper *et al.* (2014) it may be the unmeasured particle motion detected by the fish, to which the fish were responding: there is a relationship between particle motion and sound pressure in a medium. This relationship is very difficult to define where the sound field is complex, such as close to the noise source or where there are multiple reflections of the sound wave in shallow water. Even these terms “shallow” and “close” do not have simple definitions.

The primary reason for the continuing use of sound pressure as the criteria, despite particle motion appearing to be the physical measure to which so many fish react or sense, is a lack of data (Popper and Hawkins, 2018) both in respect of predictions of the particle motion level as a consequence of a noise source such as piling, and a lack of knowledge of the sensitivity of a fish, or a wider category of fish, to a particle motion value. There continue to be calls for additional research on the levels of and effects with respect to levels of particle motion. Until sufficient data are available to enable revised thresholds based on the particle motion metric, Popper and Hawkins (2019) state that “since there is an immediate need for updated criteria and guidelines on potential effects of anthropogenic sound on fishes, we recommend, as do our colleagues in Sweden (Andersson *et al.*, 2017), that the criteria proposed by Popper *et al.* (2014) should be used.”

2.2.3 Seabed vibration

Vibration is commonly mentioned in association with noise and would typically be thought of as the movement of a solid surface (or substrate), which either radiates sound into an adjacent fluid medium (e.g. the vibration of the surface of a foundation pile transmitting sound into water) and propagates further, or affects a receptor directly connected to it.

High intensity sources that directly affect the seabed, such as impact piling, will also generate vibration and be transmitted through the substrate. This has the potential to affect benthic and demersal species (Roberts and Elliott, 2017; Popper and Hawkins, 2019). While the presence of vibration during piling is expected, an assessment of this has the same limitations as those for particle motion in fish, as little is known of the quantitative influence of the vibration source, or of the sensitivity of relevant species to it. No further detailed assessment can be undertaken in this report.

3 Modelling methodology

To estimate the underwater noise levels likely to arise during the construction and operation of the proposed development, predictive noise modelling has been undertaken. The methods described in this section, and used within this report, meet the requirements set by the National Physical Laboratory (NPL) Good Practice Guide 133 for underwater noise measurement (Robinson *et al.*, 2014).

Of those considered, the noise source most important to consider is impact piling due to the noise level and duration it will be present (Bailey *et al.*, 2014). As such, the noise related to impact piling activity is the primary focus of this study.

The modelling of impact piling has been undertaken using the INSPIRE underwater noise model. The INSPIRE model (currently version 5.2) is a semi-empirical underwater noise propagation model based around a combination of numerical modelling, a combined geometric and energy flow/hysteresis loss method, and actual measured data. It is designed to calculate the propagation of noise in shallow (i.e., less than 100 m), mixed water; typical of the conditions around Ireland and the UK and well suited for use in the Irish Sea. The model has been tuned for accuracy using over 80 datasets of underwater noise propagation from on-site monitoring around offshore piling activities duration construction phases including multiple sites located in the eastern Irish Sea.

The model provides estimates of unweighted SPL_{peak} , SEL_{ss} and SEL_{cum} noise levels, as well as various other weighted noise metrics. Calculations are made along 180 equally spaced radial transects (one every two degrees). For each modelling run a criterion level can be specified allowing a contour to be drawn, within which a given effect may occur. These results can then be plotted over digital bathymetry data so that impact ranges can be clearly visualised as necessary. INSPIRE also produces these contours as GIS shapefiles.

INSPIRE considers a wide array of input parameters, including variations in bathymetry and source frequency to ensure accurate results are produced specific to the location and nature of the piling operation. It should also be noted that the results should be considered conservative as maximum design parameters and highly precautionary assumptions have been selected for:

- Piling hammer blow energies;
- Soft start, hammer energy ramp up, and strike rate;
- Total duration of piling; and
- Receptor swim speeds.

Simpler modelling approaches have been used for noise sources other than piling that may be present during the construction and operation of the proposed development; these are discussed in section 5.

3.1 Modelling confidence

INSPIRE is semi-empirical, as such, a validation process is inherently built into the development process. Whenever a new set of good, reliable, impact piling measurement data is gathered through offshore surveys, either by Subacoustech or a third party, it is compared against the outputted levels from INSPIRE and, if necessary, the model can be adjusted. Currently over 80 separate impact piling noise datasets primarily from the Irish and North Sea have been used as part of the development for the latest version of INSPIRE, and in each case, an average fit is used.

In addition, INSPIRE is also validated by comparing the noise levels outputted from the model with measurements and modelling undertaken by third parties, for example Thompson *et al.* (2013).

The current version of INSPIRE (version 5.2) is the product of reanalysing all the impact piling noise in Subacoustech Environmental's measurement database and any other data available and cross-

referencing it with blow energy data from piling logs. This gives a database of single strike noise levels referenced to a specific blow energy at a specific range and conditions.

Previous iterations of the INSPIRE model have endeavoured to give a worst-case estimate of underwater noise levels produced by various permutations of impact piling parameters. There is always some natural variability with underwater noise measurements, even when considering measurements of pile strikes under the same conditions (i.e., at the same blow energy, taken at the same range). For example, there can be variations in noise level of up to five or even 10 dB, as seen in Bailey *et al.* (2010) and the data shown in Figure 3-1. When modelling using the upper bounds of this range, in combination with other worst-case parameter selections, conservatism can be compounded to create excessively overcautious predictions, especially when calculating SEL_{cum} . With this in mind, the current version of INSPIRE attempts to calculate closer to the average fit of the measured noise levels at all ranges, which maintains an additional degree of precaution in the estimation.

Figure 3-1 presents a small selection of the measured impact piling noise data plotted against outputs from INSPIRE. The plots show data points from measured data (in blue) plotted alongside modelled data (in orange) using INSPIRE v5.2, matching the pile size, blow energy and position of the measured data. These show the fit to the data, with the INSPIRE data points sitting, more or less, in the middle of the measured noise levels at each range. When combined with the worst-case assumptions in parameter selection, modelled results will remain precautionary.

The greatest deviations from the model tend to be at the greatest distances, where the influence on the SEL_{cum} will be minimal.

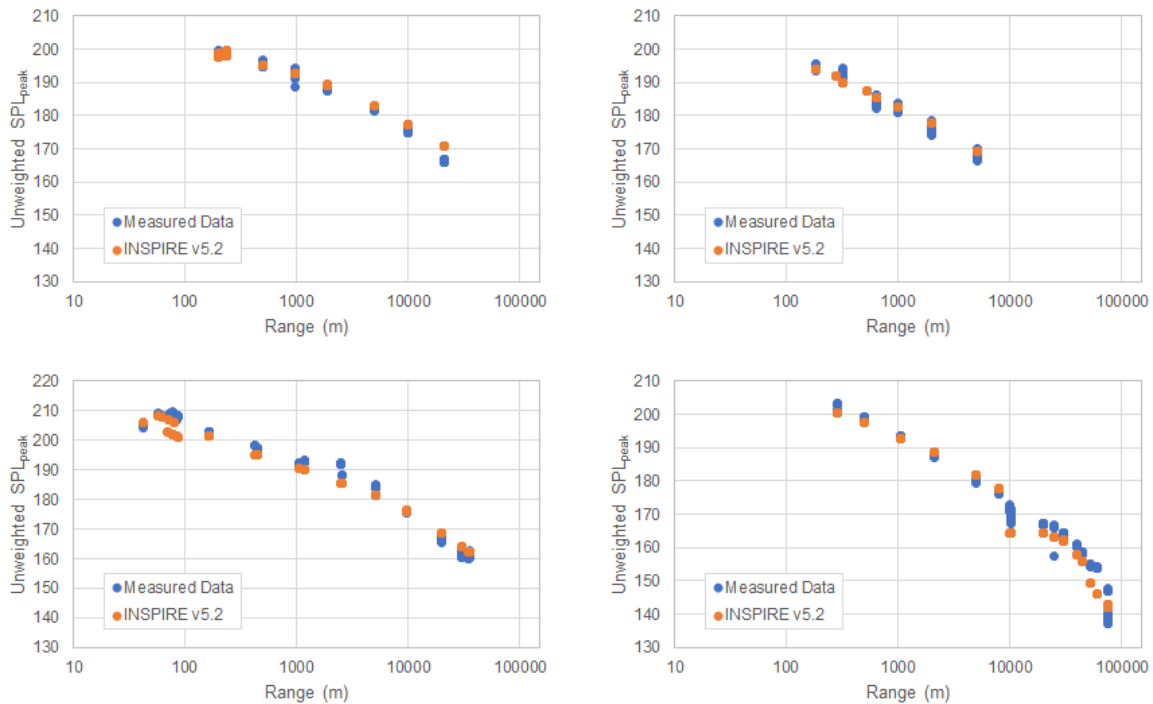


Figure 3-1 Comparison between example measured SPL_{peak} impact piling data (blue points) and modelled data using INSPIRE version 5.2 (orange points)¹

¹ Top Left: 6.0 m pile, 1,010 kJ max hammer energy, off the Suffolk coast, North Sea, 2009; Top Right: 1.8 m pile, 260 kJ max hammer energy, West of Barrow-in-Furness, Irish Sea, 2010; Bottom Left: 5.3 m pile, 1,560 kJ max hammer energy, off the North Welsh coast, 2012; Bottom Right: 6.0 m pile, 1,210 kJ max hammer energy, off the coast of Cumbria, 2010.

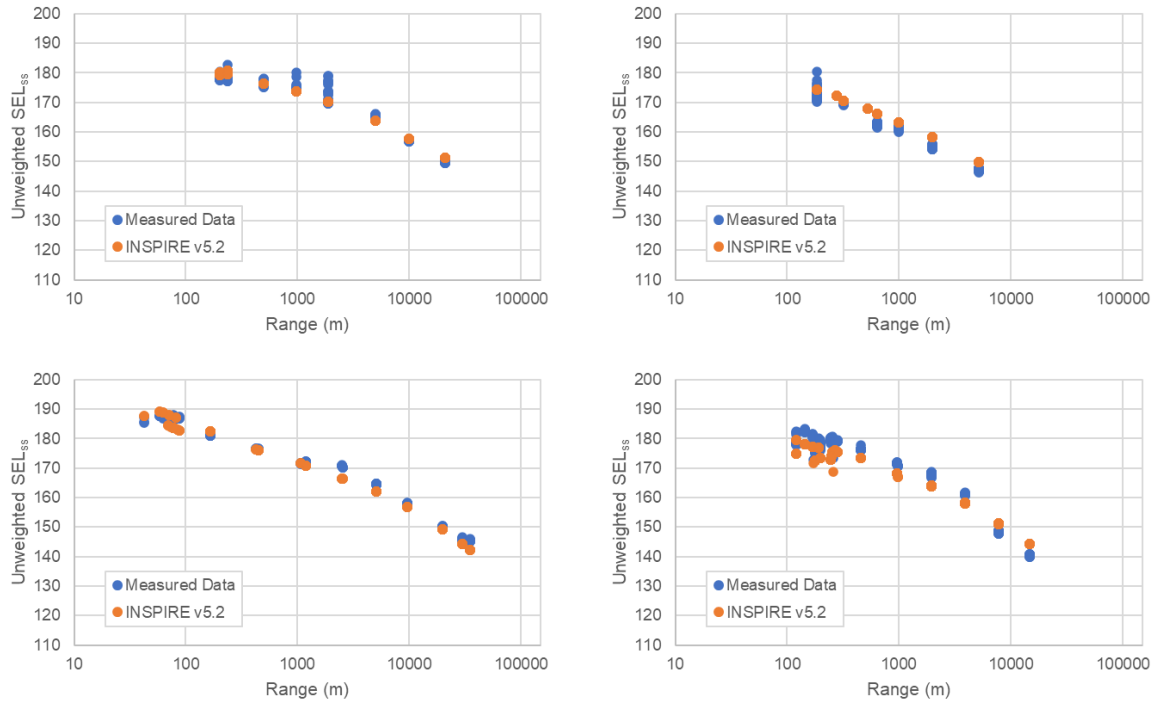


Figure 3-2 Comparison between example measured SEL_{ss} impact piling data (blue points) and modelled data using INSPIRE version 5.2 (orange points)²

3.2 Modelling parameters

3.2.1 Modelling locations

Modelling for WTG foundation impact piling has been undertaken at four representative WTG locations covering the extents of the array area. The four locations cover WTG locations within the array area as shown below, giving a spread of various water depths, distances to the shore and to the deeper water to the east into the Irish Sea.

These locations are summarised in Table 3-1 and illustrated in Figure 3-3.

Table 3-1 Summary of the underwater noise modelling locations used for this study

Modelling locations	North East (NE) location	North West (NW) location	South East (SE) location	South West (SW) location
Latitude	53.73610° N	53.73423° N	53.63831° N	53.63242° N
Longitude	005.85351° W	005.98617° W	005.85010° W	5.92449° W
Water depth	51.4 m	34.8 m	58.6 m	43.8 m

² Top Left: 6.0 m pile, 1,010 kJ max hammer energy, off the Suffolk coast, North Sea, 2009; Top Right: 1.8 m pile, 260 kJ max hammer energy, West of Barrow-in-Furness, Irish Sea, 2010; Bottom Left: 5.3 m pile, 1,560 kJ max hammer energy, off the North Welsh coast, 2012; Bottom Right: 5.33 m pile, 1,040 kJ max hammer energy, off the coast of Kent, 2009.

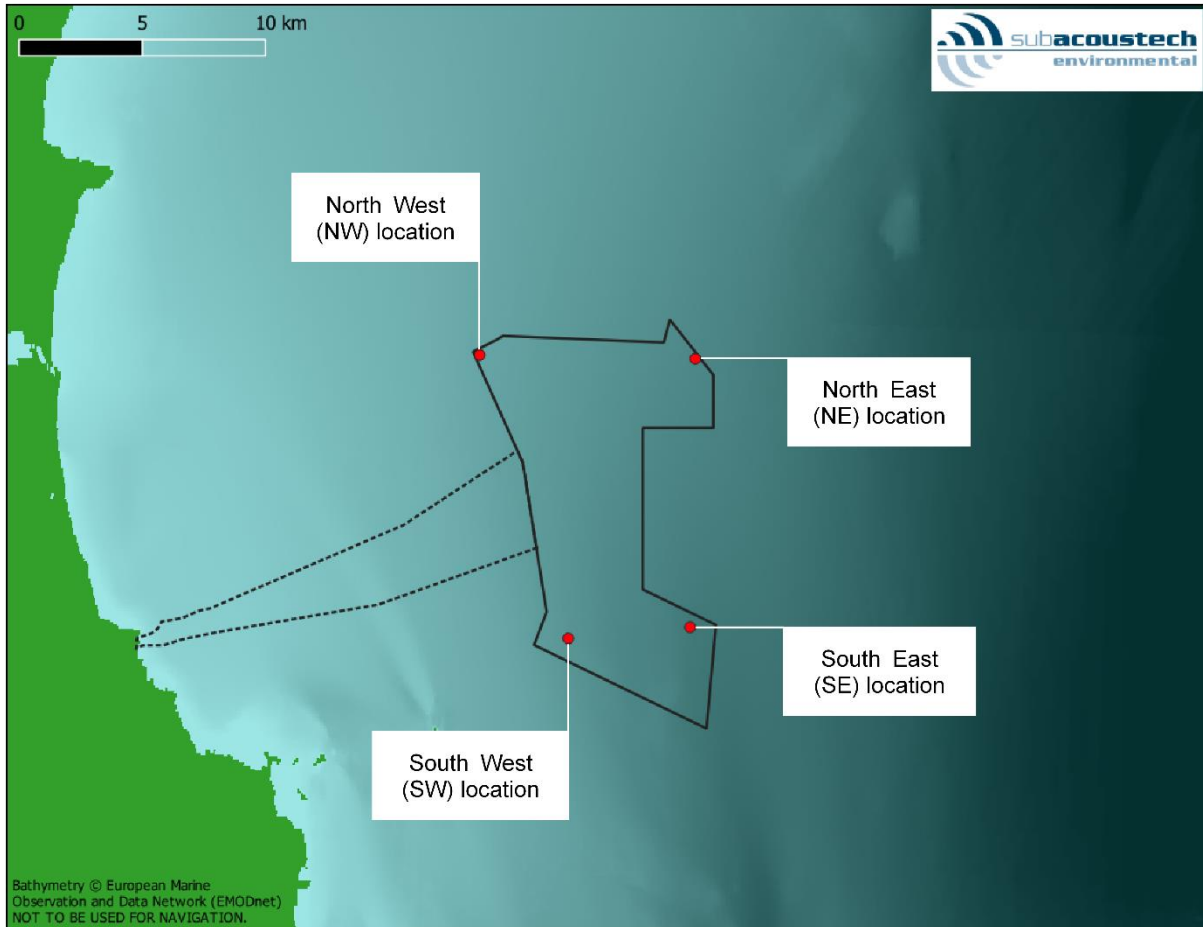


Figure 3-3 Approximate positions of the modelling locations at the proposed development

3.2.2 WTG foundation and impact piling parameters

Two foundation designs have been considered for this study, covering the precautionary 100% driven scenarios for Project Option 1 and Project Option 2. These are:

- Project Option 1 and Project Option 2: a monopile foundation scenario, installing a 12.5 m diameter pile with a maximum blow energy of 5,500 kJ; and
- Project Option 2 only: a multi-leg foundation scenario, installing 6 m diameter piles with a maximum blow energy of 3,000 kJ.

For SEL_{cum} criteria, the soft start and ramp up of blow energies along with the total duration of piling and strike rate must also be considered. These are summarised for the two foundation scenarios in Table 3-2 and Table 3-3.

In a 24-hour period it is expected that either a single monopile foundation or two multi-leg foundations can be installed, and this has been taken into consideration for the modelling. It is expected that only one piling vessel will be in operation at the proposed development at any one time.

Table 3-2 Summary of the soft start and ramp up scenario used for the monopile foundation modelling

Monopile foundation	825 kJ		1,100 kJ	2,200 kJ	3,300 kJ	4,400 kJ	5,500 kJ
No. of strikes	3	300	600	300	300	300	8,745
Duration	30 mins	30 mins	20 mins	6 mins 40s	6 mins 40s	6 mins 40s	4 hours 25 mins
Strike rate (blows/min)	0.1	10	30	45			33
10,548 strikes over 6 hours 5 mins per pile							

Table 3-3 Summary of the soft start and ramp up scenario used for the multi-leg pile foundation modelling

Jacket pile foundation	450 kJ		600 kJ	1,200 kJ	1,800 kJ	2,400 kJ	3,000 kJ
No. of strikes	3	300	600	300	300	300	3,300
Duration (minutes)	30 mins	30 mins	20 mins	6 mins 40s	6 mins 40s	6 mins 40s	1 hour 40 mins
Strike rate (blows/min)	0.1	10	30	45			33
5,103 strikes over 3 hours 20 mins per pile 10,206 strikes over 6 hours 40 mins for 2 piles							

3.2.3 Apparent source levels

Noise modelling requires knowledge of a source level, which is the theoretical noise level at one metre from the noise source. It is worth noting that the ‘source level’ technically does not exist in the context of many shallow water (< 100 m) noise sources (Heaney *et al.*, 2020). The noise level at one metre from the pile will be highly complex and vary up and down the water column by the pile, rather than being one simple noise level. In practice, for underwater noise modelling such as this, it is effectively an ‘apparent source level’ that is used, essentially a value that can be used to produce correct noise levels at range (for a specific model), as required in impact assessments.

The INSPIRE model requires an apparent source level, which is estimated based on the pile diameter and the blow energy imparted on the pile by the hammer. This is adjusted depending on the water depth at the modelling location to allow for the length of pile (and effective surface area) in contact with the water, which can affect the amount of noise that is transmitted from the pile into its surroundings. The unweighted, single strike SPL_{peak} and SEL_{ss} apparent source levels estimated for this study are provided in Table 3-4. These figures are presented in accordance with requests commonly made by regulatory authorities, although as indicated above, they are not necessarily compatible with any other model or predicted apparent source level. In each case, the differences in apparent source level for each location are minimal.

Table 3-4 Summary of the unweighted source levels used for modelling

Source levels	Location	Monopile foundation 12.5 m / 5,500 kJ	Multi-leg foundation 6 m / 3,000 kJ
Unwtd SPL _{peak}	NE location	242.9 dB re 1 µPa @ 1 m	241.8 dB re 1 µPa @ 1 m
	NW location	242.9 dB re 1 µPa @ 1 m	241.8 dB re 1 µPa @ 1 m
	SE location	242.9 dB re 1 µPa @ 1 m	241.8 dB re 1 µPa @ 1 m
	SW location	242.9 dB re 1 µPa @ 1 m	241.8 dB re 1 µPa @ 1 m
Unwtd SEL _{ss}	NE location	224.1 dB re 1 µPa ² s @ 1 m	222.8 dB re 1 µPa ² s @ 1 m
	NW location	224.1 dB re 1 µPa ² s @ 1 m	222.7 dB re 1 µPa ² s @ 1 m
	SE location	224.1 dB re 1 µPa ² s @ 1 m	222.8 dB re 1 µPa ² s @ 1 m
	SW location	224.1 dB re 1 µPa ² s @ 1 m	222.8 dB re 1 µPa ² s @ 1 m

3.2.4 *Environmental conditions*

With the inclusion of measured noise propagation data for similar offshore piling operations in Irish and UK waters, the INSPIRE model intrinsically accounts for various environmental conditions. This includes the differences that can occur with the temperature and salinity of the water, as well as the sediment type surrounding the site. Data from the British Geological Survey (BGS) that covers the east coast of Ireland show that the seabed in and around the proposed development is generally made up of various combinations of sand and mud.

Digital bathymetry from the European Marine Observation and Data Network (EMODnet) has been used for this modelling. Mean tidal depth has been used throughout.

3.3 Cumulative SELs and fleeing receptors

Expanding on the information in section 2.2 regarding SEL_{cum} and the fleeing animal assumptions used for modelling, it is important to understand the meaning of the results presented in the following sections.

When an SEL_{cum} impact range is presented for a fleeing animal, this range can be considered a starting position (at the commencement of piling) for the fleeing receptor. For example, if a receptor began to flee in a straight line from the noise source, starting at the position (distance from a pile) denoted by a modelled PTS contour, the receptor would receive exactly the noise exposure as per the PTS criterion under consideration.

When considering a stationary receptor (i.e., one that stays at the same position throughout piling, with no flee response), calculating the SEL_{cum} is straightforward: all the noise levels produced and received at a single point along a transect are aggregated to calculate the SEL_{cum} . If this calculated level is greater than the threshold being modelled, the model steps away from the noise source and the noise levels from that new location are aggregated to calculate a new SEL_{cum} . This continues outward until the threshold is met.

For a fleeing animal, the receptor's distance from the noise source while moving away also needs to be considered. To model this, a starting point close to the source is chosen and the received noise level for each noise event (e.g., pile strike) is noted; the receptor moves away from the source at a defined speed. For example, if a noise event occurs every six seconds and an animal is fleeing at a rate of 1.5 ms^{-1} , it is 9 m further from the source after each noise pulse, resulting in a slightly reduced noise level each time. These values are then aggregated into an SEL_{cum} value over the entire operation. The faster an animal is fleeing the greater the distance travelled between noise events. The impact range outputted by the model for this situation is the distance the receptor must be at the start of the operation to exactly meet the exposure threshold.

As an example, the graphs in Figure 3-4 and Figure 3-5 show the difference in the received SEL from a stationary receptor and a fleeing receptor travelling at a constant speed of 1.5 ms^{-1} , using the monopile foundation scenario at the SE location for a single pile installation.

The received SEL_{ss} from the stationary receptor, as illustrated in Figure 3-4, shows the noise level gradually increasing as the blow energy increases throughout the piling operation. These step changes are also visible for the fleeing receptor, but as the receptor is further from the noise source by the time the levels increase, the total received exposure reduces, resulting in progressively lower received noise levels. As an example, for the first hour of piling, where the blow energy for the monopile is 825 kJ, fleeing at a rate of 1.5 ms^{-1} , a receptor has the potential to move 5.4 km from the noise source. After the full 6 hours and 5 minutes, the receptor has the potential to be over 32 km from the noise source.

Figure 3-5 shows the effect these different received levels have when calculating the SEL_{cum} . It clearly shows the difference in cumulative effect between the receptor remaining still, as opposed to fleeing. To use an extreme example, starting at a range of 1 m, the first strike results in a received level of 218.3 dB re 1 μPa^2s . If the receptor were to remain stationary throughout the piling operation it would receive a cumulative level of 263.9 dB re 1 μPa^2s , whereas when fleeing at 1.5 ms^{-1} over the same scenario, a cumulative received level of just 218.4 dB re 1 μPa^2s is achieved.

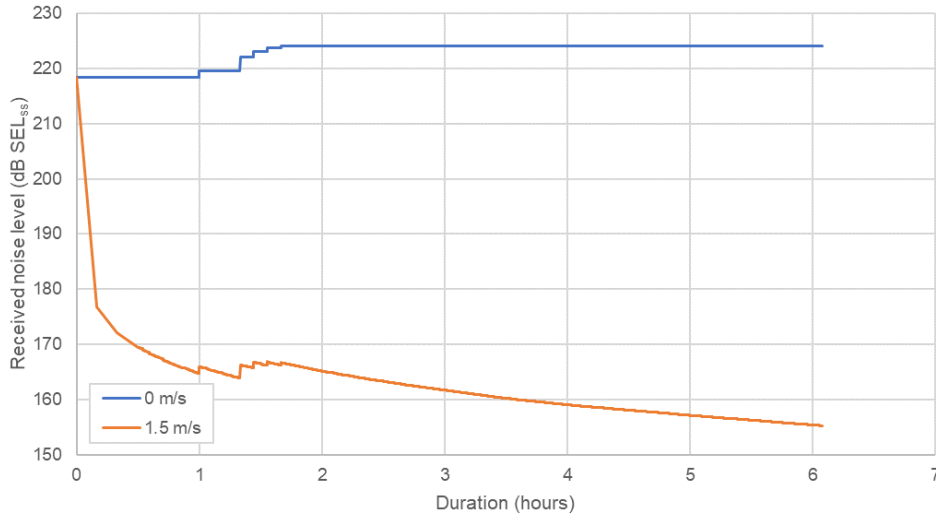


Figure 3-4 Received single-strike noise levels (SEL_{ss}) for receptors during the monopile foundation parameters at the SE location, assuming both a stationary and fleeing receptor starting at a location 1 m from the noise source

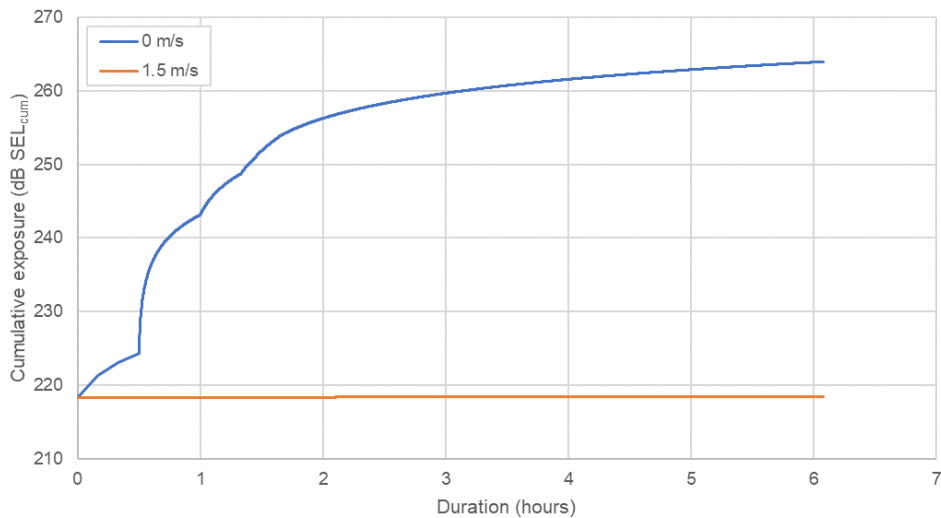


Figure 3-5 Cumulative received noise levels (SEL_{cum}) for receptors during monopile foundation parameters at the SE location, assuming both a stationary and fleeing receptor starting at a location 1 m from the noise source

To summarise, if the receptor were to start fleeing in a straight line from the noise source starting at a range closer than the modelled value it would receive a noise exposure in excess of the criterion, and if the receptor were to start fleeing from a range further than the modelled value it would receive a noise exposure below the criterion. This is illustrated in Figure 3-6.

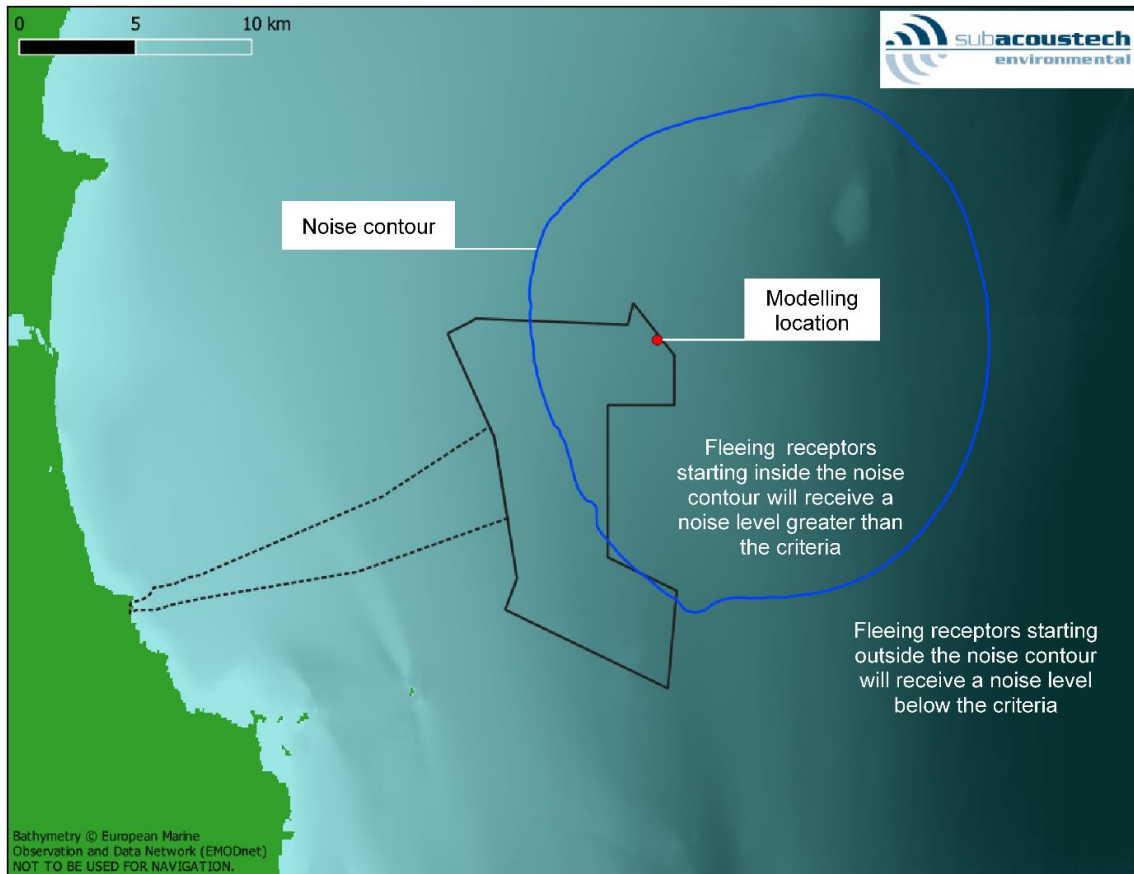


Figure 3-6 Example plot showing a fleeing animal SEL_{cum} criteria contour and the areas where the cumulative noise exposure will exceed the impact criteria

Some modelling approaches include the effects of Acoustic Deterrent Devices (ADDs) that cause receptors to flee from the immediate area around the pile before activity commences. Subacoustech Environmental's modelling approach does not include this, however the effects of using an ADD can still be inferred from the results. For example, if a receptor were to flee for 20 minutes from an ADD at a rate of 1.5 ms^{-1} , it would travel 1.8 km before piling begins. If a cumulative SEL impact range from INSPIRE was calculated to be below 1.8 km, it is assumed that the ADD will be effective in eliminating the risk of exceedance of the threshold. The noise from an ADD is of a much lower level than impact piling, and as such the overall effect on the SEL_{cum} exposure on a receptor would be minimal.

3.3.1 The effect of input parameters on SELs and fleeing receptors

As discussed in section 3.2.2, parameters such as bathymetry, hammer blow energies, piling ramp up, strike rate and duration all have an effect on predicted noise levels. When considered SEL_{cum} and a fleeing animal model, some of these parameters can have a greater influence than others.

Parameters like hammer blow energy can have a clear effect on impact ranges, with higher energies resulting in higher apparent source noise levels and therefore larger impact ranges. When considering cumulative noise levels, these higher levels are compounded sometimes thousands of times due to the number of pile strikes. With this in mind, the ramp up from low blow energies to higher ones requires careful consideration for fleeing animals, as the levels while the receptors are relatively close to the noise source will have a greater effect on the overall cumulative exposure level.

Linked to the effect of the ramp up is the strike rate, as the more pile strikes that occur while the receptor is close to the noise source, the greater the exposure and the greater effect it will have on the SEL_{cum} . The faster the strike rate, the shorter the distance the receptor can flee between each pile strike, which leads to greater exposure.

In general, the greatest contribution to the receptors' exposure is found when it is close to the noise source. For example, if high blow energies or a fast strike rate are used at the start of the piling activities, bigger increases in impact ranges will be achieved.

Another factor that can cause big differences in calculated impact ranges is the bathymetry, as deep water results in a slower attenuation of noise (i.e., they remain higher for greater distances). However, it is not always feasible to limit piling activity in or near to deep water.

3.4 Precaution in underwater noise modelling

It is worth reiterating the precaution that is included in the INSPIRE modelling in calculating potential environmental impacts. In an effort to minimise the risk of under-prediction of the potential impact ranges that could occur in respect of sensitive marine mammal and fish receptors, conservative parameters are included for every element, which can be broken down into three basic headings for acoustic modelling. The possibility that all of these could occur together is highly unlikely, but necessary for the purposes of the assessment.

3.4.1 Source

There are a number of layers of precaution included in the noise level at source and the exposure to which it would lead. The modelling locations were chosen to provide the greatest extents of the sites in the locations likely to lead to maximum underwater noise transmission. The maximum blow energies were used for a time period unlikely to occur in practice – were these blow energies and times to be used in practice, they would likely to lead to unacceptable fatigue on the pile material. The fast strike rate was included for much of the ramp up, which would not be expected in practice. A rapid ramp-up to this maximum energy was used. The total active piling duration is not expected to be exceeded on site.

3.4.2 Transmission

Sound attenuates over distance from the source. The model considers fundamental noise spreading predictions adjusted to empirical data, as can be seen in the examples in Modelling Confidence in section 3.1.

3.4.3 Receiver

The thresholds used for the sensitivity of marine mammals and fish are based on respective guidance for species groups. However, these are precautionary in themselves, in the following ways. Frequency specific hearing thresholds are not used for fish as they are with marine mammals, effectively assuming that fish are sensitive to sound at all frequencies, which is not the case. The thresholds calculated for PTS and TTS are 'onset' to these effects, which means that this is the threshold at which the effect starts to be detected in test species, rather than that this effect is widespread. Therefore according to the key guideline documents, Southall *et al.* (2019) and Popper *et al.* (2014), this threshold is highly precautionary and is set at the point of where the potential for this effect could start to be seen in some individuals, rather than any expectation that any actual harm at this extent will occur in many of the species.

4 Modelling results

This section presents the modelled impact ranges for impact piling noise following the parameters detailed in section 3.2, covering the Southall *et al.* (2019) and NOAA (2005) marine mammal criteria (section 2.2.1) and the Popper *et al.* (2014) fish criteria (section 2.2.2). To aid navigation, Table 4-1 contains a list of the impact range tables included in this section. The largest modelled ranges are predicted for the monopile foundation scenario, which includes both Project Option 1 and Project Option 2, at the NE and SE locations due to sound transmission into the deep water to the east of these locations. Smaller impact ranges were found for the multi-leg foundation scenarios. It should be reiterated that the guidelines only require consideration of the installation of the number of piles in 24 hours, and thus the total number of turbines or foundation piles in any Project Option is not required.

Throughout this report any predicted ranges smaller than 50 m and areas less than 0.01 km² for single strike criteria and ranges smaller than 100 m and areas less than 0.1 km² for cumulative criteria, have not been presented in detail. At ranges this close to the noise source, the modelling processes are unable to model to a sufficient level of accuracy due to complex acoustic effects present near the pile. These ranges are given as “less than” this limit (e.g., “<100 m”).

Additionally, the modelling results for the Southall *et al.* (2019) non-impulsive criteria are presented in Appendix A.

Table 4-1 Summary of the unmitigated impact piling modelling results tables presented in this section.

Table (page)	Parameters (section)	Criteria	
Table 4-2 (p22)	Monopile foundation (4.1) (unmitigated)	Southall <i>et al.</i> (2019) Unweighted SPL _{peak}	
Table 4-3 (p22)		Weighted SEL _{cum} (Impulsive)	
Table 4-4 (p22)		NE (0) NOAA (2005) Unweighted SPL _{RMS} (Level B)	
Table 4-5 (p22)		Popper <i>et al.</i> (2014) Unweighted SPL _{peak}	
Table 4-6 (p23)		Unweighted SEL _{cum} (Pile driving)	
Table 4-7 (p23)		NW (4.1.2)	Southall <i>et al.</i> (2019) Unweighted SPL _{peak}
Table 4-8 (p23)			Weighted SEL _{cum} (Impulsive)
Table 4-9 (p24)			NOAA (2005) Unweighted SPL _{RMS} (Level B)
Table 4-10 (p24)		Popper <i>et al.</i> (2014)	Unweighted SPL _{peak}
Table 4-11 (p24)			Unweighted SEL _{cum} (Pile driving)
Table 4-12 (p24)		SE (4.1.3)	Unweighted SPL _{peak}
Table 4-13 (p25)			Southall <i>et al.</i> (2019) Weighted SEL _{cum} (Impulsive)
Table 4-14 (p25)			NOAA (2005) Unweighted SPL _{RMS} (Level B)
Table 4-15 (p25)			Popper <i>et al.</i> (2014) Unweighted SPL _{peak}
Table 4-16 (p25)			Unweighted SEL _{cum} (Pile driving)
Table 4-17 (p26)			SW (4.1.4)
Table 4-18 (p26)		Weighted SEL _{cum} (Impulsive)	
Table 4-19 (p26)		NOAA (2005) Unweighted SPL _{RMS} (Level B)	
Table 4-20 (p26)		Unweighted SPL _{peak}	
Table 4-21 (p27)		Popper <i>et al.</i> (2014) Unweighted SEL _{cum} (Pile driving)	
Table 4-22 (p28)		Multi-leg foundations (4.2)	NE (4.2.1) Southall <i>et al.</i> (2019) Unweighted SPL _{peak}
Table 4-23 (p28)			Weighted SEL _{cum} (Impulsive)
Table 4-24 (p28)			Weighted SEL _{cum} (Impulsive) (2 sequential piles)

Table (page)	Parameters (section)	Criteria		
	(unmitigated)			
Table 4-25 (p29)		NOAA (2005)	Unweighted SPL _{RMS} (Level B)	
Table 4-26 (p29)		Popper <i>et al.</i> (2014)	Unweighted SPL _{peak}	
Table 4-27 (p29)			Unweighted SEL _{cum} (Pile driving)	
Table 4-28 (p29)			Weighted SEL _{cum} (Impulsive) (2 sequential piles)	
Table 4-29 (p30)		NW (4.2.2)	Unweighted SPL _{peak}	
Table 4-30 (p30)			Weighted SEL _{cum} (Impulsive)	
Table 4-31 (p30)			Weighted SEL _{cum} (Impulsive) (2 sequential piles)	
Table 4-32 (p30)			NOAA (2005)	Unweighted SPL _{RMS} (Level B)
Table 4-33 (p30)			Popper <i>et al.</i> (2014)	Unweighted SPL _{peak}
Table 4-34 (p31)				Unweighted SEL _{cum} (Pile driving)
Table 4-35 (p31)			Weighted SEL _{cum} (Impulsive) (2 sequential piles)	
Table 4-36 (p32)		SE (4.2.3)	Unweighted SPL _{peak}	
Table 4-37 (p32)			Weighted SEL _{cum} (Impulsive)	
Table 4-38 (p32)			Weighted SEL _{cum} (Impulsive) (2 sequential piles)	
Table 4-39 (p33)			NOAA (2005)	Unweighted SPL _{RMS} (Level B)
Table 4-40 (p33)			Popper <i>et al.</i> (2014)	Unweighted SPL _{peak}
Table 4-41 (p33)				Unweighted SEL _{cum} (Pile driving)
Table 4-42 (p33)			Weighted SEL _{cum} (Impulsive) (2 sequential piles)	
Table 4-43 (p34)		SW (4.2.4)	Unweighted SPL _{peak}	
Table 4-44 (p34)			Weighted SEL _{cum} (Impulsive)	
Table 4-45 (p34)			Weighted SEL _{cum} (Impulsive) (2 sequential piles)	
Table 4-46 (p34)			NOAA (2005)	Unweighted SPL _{RMS} (Level B)
Table 4-47 (p35)			Popper <i>et al.</i> (2014)	Unweighted SPL _{peak}
Table 4-48 (p35)				Unweighted SEL _{cum} (Pile driving)
Table 4-49 (p35)			Weighted SEL _{cum} (Impulsive) (2 sequential piles)	

4.1 Monopile foundations

Table 4-2 to Table 4-21 present the modelling results for the unmitigated monopile foundation scenarios using the parameters presented in section 3.2, in terms of the Southall *et al.* (2019) and NOAA (2005) marine mammal criteria (section 2.2.1) and the Popper *et al.* (2014) fish criteria (section 2.2.2).

For monopile foundation installation, the largest marine mammal impact ranges are predicted at the SE location, due to the deep water out to the east into the Irish Sea. Maximum PTS ranges are predicted for LF and VHF cetaceans out to 26 km and 15 km respectively. For fish, the largest recoverable injury ranges (203 dB SEL_{cum} threshold) are predicted out to 11 km when considering a stationary receptor, reducing to less than 100 m when a fleeing animal is assumed.

4.1.1 *NE location*

Table 4-2 Summary of the unweighted SPL_{peak} impact ranges for marine mammals using the Southall et al. (2019) impulsive criteria for the monopile foundation modelling at the NE location.

Southall et al. (2019) Unweighted SPL_{peak}		NE location, monopile foundation			
		Area	Maximum range	Minimum range	Mean range
PTS (Impulsive)	LF (219 dB)	0.01 km ²	50 m	50 m	50 m
	HF (230 dB)	< 0.01 km ²	< 50 m	< 50 m	< 50 m
	VHF (202 dB)	2.0 km ²	800 m	800 m	800 m
	PCW (218 dB)	0.01 km ²	60 m	60 m	60 m
TTS (Impulsive)	LF (213 dB)	0.06 km ²	140 m	140 m	140 m
	HF (224 dB)	< 0.01 km ²	< 50 m	< 50 m	< 50 m
	VHF (196 dB)	13 km ²	2.1 km	2.1 km	2.1 km
	PCW (212 dB)	0.08 km ²	160 m	160 m	160 m

Table 4-3 Summary of the weighted SEL_{cum} impact ranges for marine mammals using the Southall et al. (2019) impulsive criteria for the monopile foundation modelling at the NE location assuming a fleeing animal.

Southall et al. (2019) Weighted SEL_{cum}		NE location, monopile foundation			
		Area	Maximum range	Minimum range	Mean range
PTS (Impulsive)	LF (183 dB)	740 km ²	26 km	1.7 km	12 km
	HF (185 dB)	< 0.1 km ²	< 100 m	< 100 m	< 100 m
	VHF (155 dB)	340 km ²	14 km	5.3 km	9.8 km
	PCW (185 dB)	< 0.1 km ²	< 100 m	< 100 m	< 100 m
TTS (Impulsive)	LF (168 dB)	9,600 km ²	105 km	10 km	45 km
	HF (170 dB)	< 0.1 km ²	< 100 m	< 100 m	< 100 m
	VHF (140 dB)	7,200 km ²	81 km	15 km	42 km
	PCW (170 dB)	3,300 km ²	51 km	13 km	29 km

Table 4-4 Summary of the unweighted SPL_{RMS} impact ranges for marine mammals using the NOAA (2005) impulsive criteria for the monopile foundation modelling at the NE location.

NOAA (2005) Unweighted SPL_{RMS}		NE location, monopile foundation			
		Area	Maximum range	Minimum range	Mean range
Level B	160 dB	4,100 km ²	48 km	23 km	35 km

Table 4-5 Summary of the unweighted SPL_{peak} impact ranges for fish using the Popper et al. (2014) pile driving criteria for the monopile foundation modelling at the NE location.

Popper et al. (2014) Unweighted SPL_{peak}		NE location, monopile foundation			
		Area	Maximum range	Minimum range	Mean range
213 dB		0.06 km ²	140 m	140 m	140 m
207 dB		0.4 km ²	360 m	360 m	360 m

Table 4-6 Summary of the unweighted SEL_{cum} impact ranges for fish using the Popper et al. (2014) pile driving criteria for the monopile foundation modelling at the NE location assuming both a fleeing and stationary animal.

Popper et al. (2014) Unweighted SEL_{cum}		NE location, monopile foundation			
		Area	Maximum range	Minimum range	Mean range
Fleeing (1.5 ms ⁻¹)	219 dB	< 0.1 km ²	< 100 m	< 100 m	< 100 m
	216 dB	< 0.1 km ²	< 100 m	< 100 m	< 100 m
	210 dB	< 0.1 km ²	< 100 m	< 100 m	< 100 m
	207 dB	< 0.1 km ²	< 100 m	< 100 m	< 100 m
	203 dB	< 0.1 km ²	< 100 m	< 100 m	< 100 m
	186 dB	3,300 km ²	51 km	13 km	29 km
Stationary	219 dB	3.4 km ²	1.1 km	1.1 km	1.1 km
	216 dB	8.6 km ²	1.7 km	1.7 km	1.7 km
	210 dB	52 km ²	4.1 km	4.0 km	4.1 km
	207 dB	120 km ²	6.4 km	6.1 km	6.2 km
	203 dB	340 km ²	11 km	9.8 km	10 km
	186 dB	7,100 km ²	69 km	23 km	45 km

4.1.2 NW location

Table 4-7 Summary of the unweighted SPL_{peak} impact ranges for marine mammals using the Southall et al. (2019) impulsive criteria for the monopile foundation modelling at the NW location.

Southall et al. (2019) Unweighted SPL_{peak}		NW location, monopile foundation			
		Area	Maximum range	Minimum range	Mean range
PTS (Impulsive)	LF (219 dB)	0.01 km ²	50 m	< 50 m	50 m
	HF (230 dB)	< 0.01 km ²	< 50 m	< 50 m	< 50 m
	VHF (202 dB)	1.7 km ²	740 m	730 m	740 m
	PCW (218 dB)	0.01 km ²	60 m	60 m	60 m
TTS (Impulsive)	LF (213 dB)	0.05 km ²	130 m	130 m	130 m
	HF (224 dB)	< 0.01 km ²	< 50 m	< 50 m	< 50 m
	VHF (196 dB)	11 km ²	1.9 km	1.8 km	1.9 km
	PCW (212 dB)	0.07 km ²	150 m	150 m	150 m

Table 4-8 Summary of the weighted SEL_{cum} impact ranges for marine mammals using the Southall et al. (2019) impulsive criteria for the monopile foundation modelling at the NW location assuming a fleeing animal.

Southall et al. (2019) Weighted SEL_{cum}		NW location, monopile foundation			
		Area	Maximum range	Minimum range	Mean range
PTS (Impulsive)	LF (183 dB)	310 km ²	18 km	< 100 m	6.8 km
	HF (185 dB)	< 0.1 km ²	< 100 m	< 100 m	< 100 m
	VHF (155 dB)	140 km ²	10 km	2.0 km	5.9 km
	PCW (185 dB)	< 0.1 km ²	< 100 m	< 100 m	< 100 m
TTS (Impulsive)	LF (168 dB)	7,400 km ²	92 km	4.2 km	36 km
	HF (170 dB)	< 0.1 km ²	< 100 m	< 100 m	< 100 m
	VHF (140 dB)	5,200 km ²	70 km	8.9 km	34 km
	PCW (170 dB)	1,900 km ²	40 km	6.7 km	21 km

Table 4-9 Summary of the unweighted SPL_{RMS} impact ranges for marine mammals using the NOAA (2005) impulsive criteria for the monopile foundation modelling at the NW location.

NOAA (2005) Unweighted SPL_{RMS}		NW location, monopile foundation			
		Area	Maximum range	Minimum range	Mean range
Level B	160 dB	2,700 km ²	41 km	15 km	28 km

Table 4-10 Summary of the unweighted SPL_{peak} impact ranges for fish using the Popper et al. (2014) pile driving criteria for the monopile foundation modelling at the NW location.

Popper et al. (2014) Unweighted SPL_{peak}		NW location, monopile foundation			
		Area	Maximum range	Minimum range	Mean range
	213 dB	0.05 km ²	130 m	130 m	130 m
	207 dB	0.35 km ²	330 m	330 m	330 m

Table 4-11 Summary of the unweighted SEL_{cum} impact ranges for fish using the Popper et al. (2014) pile driving criteria for the monopile foundation modelling at the NW location assuming both a fleeing and stationary animal.

Popper et al. (2014) Unweighted SEL_{cum}		NW location, monopile foundation			
		Area	Maximum range	Minimum range	Mean range
Fleeing (1.5 ms ⁻¹)	219 dB	< 0.1 km ²	< 100 m	< 100 m	< 100 m
	216 dB	< 0.1 km ²	< 100 m	< 100 m	< 100 m
	210 dB	< 0.1 km ²	< 100 m	< 100 m	< 100 m
	207 dB	< 0.1 km ²	< 100 m	< 100 m	< 100 m
	203 dB	< 0.1 km ²	< 100 m	< 100 m	< 100 m
	186 dB	2,000 km ²	41 km	6.6 km	21 km
Stationary	219 dB	2.9 km ²	980 m	950 m	960 m
	216 dB	7.2 km ²	1.5 km	1.5 km	1.5 km
	210 dB	40 km ²	3.7 km	3.5 km	3.6 km
	207 dB	90 km ²	5.6 km	5.1 km	5.4 km
	203 dB	240 km ²	9.5 km	7.9 km	8.7 km
	186 dB	4,800 km ²	59 km	15 km	36 km

4.1.3 SE location

Table 4-12 Summary of the unweighted SPL_{peak} impact ranges for marine mammals using the Southall et al. (2019) impulsive criteria for the monopile foundation modelling at the SE location.

Southall et al. (2019) Unweighted SPL_{peak}		SE location, monopile foundation			
		Area	Maximum range	Minimum range	Mean range
PTS (Impulsive)	LF (219 dB)	0.01 km ²	50 m	50 m	50 m
	HF (230 dB)	< 0.01 km ²	< 50 m	< 50 m	< 50 m
	VHF (202 dB)	2.1 km ²	810 m	810 m	810 m
	PCW (218 dB)	0.01 km ²	60 m	60 m	60 m
TTS (Impulsive)	LF (213 dB)	0.06 km ²	140 m	140 m	140 m
	HF (224 dB)	< 0.01 km ²	< 50 m	< 50 m	< 50 m
	VHF (196 dB)	14 km ²	2.1 km	2.1 km	2.1 km
	PCW (212 dB)	0.08 km ²	160 m	160 m	160 m

Table 4-13 Summary of the weighted SEL_{cum} impact ranges for marine mammals using the Southall et al. (2019) impulsive criteria for the monopile foundation modelling at the SE location assuming a fleeing animal.

Southall et al. (2019) Weighted SEL_{cum}		SE location, monopile foundation			
		Area	Maximum range	Minimum range	Mean range
PTS (Impulsive)	LF (183 dB)	790 km ²	26 km	< 100 m	13 km
	HF (185 dB)	< 0.1 km ²	< 100 m	< 100 m	< 100 m
	VHF (155 dB)	360 km ²	15 km	2.3 km	10 km
	PCW (185 dB)	< 0.1 km ²	< 100 m	< 100 m	< 100 m
TTS (Impulsive)	LF (168 dB)	9,900 km ²	102 km	3.2 km	46 km
	HF (170 dB)	< 0.1 km ²	< 100 m	< 100 m	< 100 m
	VHF (140 dB)	7,500 km ²	83 km	5.6 km	43 km
	PCW (170 dB)	3,400 km ²	50 km	4.5 km	30 km

Table 4-14 Summary of the unweighted SPL_{RMS} impact ranges for marine mammals using the NOAA (2005) impulsive criteria for the monopile foundation modelling at the SE location.

NOAA (2005) Unweighted SPL_{RMS}		SE location, monopile foundation			
		Area	Maximum range	Minimum range	Mean range
Level B	160 dB	4,100 km ²	48 km	11 km	35 km

Table 4-15 Summary of the unweighted SPL_{peak} impact ranges for fish using the Popper et al. (2014) pile driving criteria for the monopile foundation modelling at the SE location.

Popper et al. (2014) Unweighted SPL_{peak}		SE location, monopile foundation			
		Area	Maximum range	Minimum range	Mean range
	213 dB	0.06 km ²	140 m	140 m	140 m
	207 dB	0.41 km ²	360 m	360 m	360 m

Table 4-16 Summary of the unweighted SEL_{cum} impact ranges for fish using the Popper et al. (2014) pile driving criteria for the monopile foundation modelling at the SE location assuming both a fleeing and stationary animal.

Popper et al. (2014) Unweighted SEL_{cum}		SE location, monopile foundation			
		Area	Maximum range	Minimum range	Mean range
Fleeing (1.5 ms ⁻¹)	219 dB	< 0.1 km ²	< 100 m	< 100 m	< 100 m
	216 dB	< 0.1 km ²	< 100 m	< 100 m	< 100 m
	210 dB	< 0.1 km ²	< 100 m	< 100 m	< 100 m
	207 dB	< 0.1 km ²	< 100 m	< 100 m	< 100 m
	203 dB	< 0.1 km ²	< 100 m	< 100 m	< 100 m
	186 dB	3,500 km ²	50 km	4.1 km	30 km
Stationary	219 dB	3.5 km ²	1.1 km	1.1 km	1.1 km
	216 dB	8.9 km ²	1.7 km	1.7 km	1.7 km
	210 dB	54 km ²	4.2 km	4.1 km	4.2 km
	207 dB	130 km ²	6.5 km	6.2 km	6.4 km
	203 dB	560 km ²	11 km	9.9 km	11 km
	186 dB	7,300 km ²	69 km	11 km	45 km

4.1.4 *SW location*

Table 4-17 Summary of the unweighted SPL_{peak} impact ranges for marine mammals using the Southall et al. (2019) impulsive criteria for the monopile foundation modelling at the SW location.

Southall et al. (2019) Unweighted SPL_{peak}		SW location, monopile foundation			
		Area	Maximum range	Minimum range	Mean range
PTS (Impulsive)	LF (219 dB)	0.01 km ²	50 m	50 m	50 m
	HF (230 dB)	< 0.01 km ²	< 50 m	< 50 m	< 50 m
	VHF (202 dB)	1.9 km ²	790 m	780 m	780 m
	PCW (218 dB)	0.01 km ²	60 m	60 m	60 m
TTS (Impulsive)	LF (213 dB)	0.06 km ²	130 m	130 m	130 m
	HF (224 dB)	< 0.01 km ²	< 50 m	< 50 m	< 50 m
	VHF (196 dB)	13 km ²	2.0 km	2.0 km	2.0 km
	PCW (212 dB)	0.08 km ²	160 m	160 m	160 m

Table 4-18 Summary of the weighted SEL_{cum} impact ranges for marine mammals using the Southall et al. (2019) impulsive criteria for the monopile foundation modelling at the SW location assuming a fleeing animal.

Southall et al. (2019) Weighted SEL_{cum}		SW location, monopile foundation			
		Area	Maximum range	Minimum range	Mean range
PTS (Impulsive)	LF (183 dB)	560 km ²	22 km	< 100 m	9.7 km
	HF (185 dB)	< 0.1 km ²	< 100 m	< 100 m	< 100 m
	VHF (155 dB)	240 km ²	13 km	< 100 m	7.7 km
	PCW (185 dB)	< 0.1 km ²	< 100 m	< 100 m	< 100 m
TTS (Impulsive)	LF (168 dB)	8,900 km ²	99 km	< 100 m	42 km
	HF (170 dB)	< 0.1 km ²	< 100 m	< 100 m	< 100 m
	VHF (140 dB)	6,500 km ²	78 km	2.4 km	38 km
	PCW (170 dB)	2,700 km ²	46 km	800 m	25 km

Table 4-19 Summary of the unweighted SPL_{RMS} impact ranges for marine mammals using the NOAA (2005) impulsive criteria for the monopile foundation modelling at the SW location.

NOAA (2005) Unweighted SPL_{RMS}		SW location, monopile foundation			
		Area	Maximum range	Minimum range	Mean range
Level B	160 dB	3,300 km ²	45 km	6.5 km	31 km

Table 4-20 Summary of the unweighted SPL_{peak} impact ranges for fish using the Popper et al. (2014) pile driving criteria for the monopile foundation modelling at the SW location.

Popper et al. (2014) Unweighted SPL_{peak}		SW location, monopile foundation			
		Area	Maximum range	Minimum range	Mean range
213 dB		0.06 km ²	130 m	130 m	130 m
207 dB		0.39 km ²	350 m	350 m	350 m

Table 4-21 Summary of the unweighted SEL_{cum} impact ranges for fish using the Popper *et al.* (2014) pile driving criteria for the monopile foundation modelling at the SW location assuming both a fleeing and stationary animal.

Popper <i>et al.</i> (2014) Unweighted SEL_{cum}		SW location, monopile foundation			
		Area	Maximum range	Minimum range	Mean range
Fleeing (1.5 ms ⁻¹)	219 dB	< 0.1 km ²	< 100 m	< 100 m	< 100 m
	216 dB	< 0.1 km ²	< 100 m	< 100 m	< 100 m
	210 dB	< 0.1 km ²	< 100 m	< 100 m	< 100 m
	207 dB	< 0.1 km ²	< 100 m	< 100 m	< 100 m
	203 dB	< 0.1 km ²	< 100 m	< 100 m	< 100 m
	186 dB	2,700 km ²	47 km	650 m	25 km
Stationary	219 dB	3.2 km ²	1.1 km	1.0 km	1.0 km
	216 dB	8.2 km ²	1.7 km	1.6 km	1.6 km
	210 dB	48 km ²	4.0 km	3.8 km	3.9 km
	207 dB	110 km ²	6.2 km	5.6 km	5.9 km
	203 dB	290 km ²	11 km	6.6 km	9.7 km
	186 dB	6,100 km ²	65 km	6.6 km	40 km

4.2 Multi-leg foundations

Table 4-22 to Table 4-49 present the modelling results for the unmitigated multi-leg foundation scenarios using the parameters presented in section 3.2, in terms of the Southall *et al.* (2019) and NOAA (2005) marine mammal criteria (section 2.2.1), and the Popper *et al.* (2014) fish criteria (section 2.2.2).

The predicted ranges for multi-leg foundations are smaller than those modelled for the monopile foundations, due to the lower blow energies, smaller pile diameters and lower total number of pile strikes.

For the multi-leg foundations, the largest marine mammal impact ranges are predicted at the NE and SE locations with maximum PTS ranges out to 17 km for LF cetaceans and 9.5 km for VHF cetaceans.

When considering the Popper *et al.* (2014) fish criteria, the largest recoverable injury ranges (203 dB SEL_{cum} threshold) for multi-leg foundations are predicted to be 8.7 km for a stationary receptor, reducing to less than 100 m when a fleeing receptor is assumed.

It is worth noting that only small increases in impact range are expected between the single pile installation and multiple sequential pile installation SEL_{cum} scenarios for fleeing animals, as any additional piling occurs once a receptor has fled to a distance where noise levels are much lower than at source (as seen in section 3.3).

4.2.1 *NE location*

Table 4-22 Summary of the unweighted SPL_{peak} impact ranges for marine mammals using the Southall et al. (2019) impulsive criteria for the multi-leg foundation modelling at the NE location.

Southall et al. (2019) Unweighted SPL_{peak}		NE location, multi-leg foundation			
		Area	Maximum range	Minimum range	Mean range
PTS (Impulsive)	LF (219 dB)	0.01 km ²	< 50 m	< 50 m	< 50 m
	HF (230 dB)	< 0.01 km ²	< 50 m	< 50 m	< 50 m
	VHF (202 dB)	1.4 km ²	680 m	680 m	680 m
	PCW (218 dB)	0.01 km ²	50 m	50 m	50 m
TTS (Impulsive)	LF (213 dB)	0.04 km ²	110 m	110 m	110 m
	HF (224 dB)	< 0.01 km ²	< 50 m	< 50 m	< 50 m
	VHF (196 dB)	9.6 km ²	1.8 km	1.7 km	1.8 km
	PCW (212 dB)	0.06 km ²	140 m	130 m	140 m

Table 4-23 Summary of the weighted SEL_{cum} for marine mammals using the Southall et al. (2019) impulsive criteria for the multi-leg foundation modelling at the NE location assuming a fleeing animal for a single pile.

Southall et al. (2019) Weighted SEL_{cum}		NE location, multi-leg foundation (single pile)			
		Area	Maximum range	Minimum range	Mean range
PTS (Impulsive)	LF (183 dB)	280 km ²	15 km	< 100 m	7.3 km
	HF (185 dB)	< 0.1 km ²	< 100 m	< 100 m	< 100 m
	VHF (155 dB)	99 km ²	7.3 km	3.6 km	5.5 km
	PCW (185 dB)	< 0.1 km ²	< 100 m	< 100 m	< 100 m
TTS (Impulsive)	LF (168 dB)	7,900 km ²	91 km	9.0 km	41 km
	HF (170 dB)	< 0.1 km ²	< 100 m	< 100 m	< 100 m
	VHF (140 dB)	4,900 km ²	62 km	15 km	36 km
	PCW (170 dB)	2,000 km ²	36 km	12 km	24 km

Table 4-24 Summary of the weighted SEL_{cum} for marine mammals using the Southall et al. (2019) impulsive criteria for the multi-leg foundation modelling at the NE location assuming a fleeing animal for two sequentially installed piles.

Southall et al. (2019) Weighted SEL_{cum}		NE location, multi-leg foundation (2 sequential piles)			
		Area	Maximum range	Minimum range	Mean range
PTS (Impulsive)	LF (183 dB)	340 km ²	17 km	< 100 m	8.0 km
	HF (185 dB)	< 0.1 km ²	< 100 m	< 100 m	< 100 m
	VHF (155 dB)	140 km ²	9.1 km	3.6 km	6.3 km
	PCW (185 dB)	< 0.1 km ²	< 100 m	< 100 m	< 100 m
TTS (Impulsive)	LF (168 dB)	8,100 km ²	94 km	9.0 km	42 km
	HF (170 dB)	< 0.1 km ²	< 100 m	< 100 m	< 100 m
	VHF (140 dB)	5,700 km ²	70 km	15 km	38 km
	PCW (170 dB)	2,600 km ²	44 km	12 km	26 km

Table 4-25 Summary of the unweighted SPL_{RMS} impact ranges for marine mammals using the NOAA (2005) impulsive criteria for the multi-leg foundation modelling at the NE location.

NOAA (2005) Unweighted SPL_{RMS}		NE location, multi-leg foundation			
		Area	Maximum range	Minimum range	Mean range
Level B	160 dB	3,400 km ²	42 km	22 km	32 km

Table 4-26 Summary of the unweighted SPL_{peak} impact ranges for fish using the Popper et al. (2014) pile driving criteria for the multi-leg foundation modelling at the NE location.

Popper et al. (2014) Unweighted SPL_{peak}		NE location, multi-leg foundation			
		Area	Maximum range	Minimum range	Mean range
	213 dB	0.04 km ²	110 m	110 m	110 m
	207 dB	0.28 km ²	300 m	300 m	300 m

Table 4-27 Summary of the unweighted SEL_{cum} impact ranges for fish using the Popper et al. (2014) pile driving criteria for the multi-leg foundation modelling at the NE location assuming both a fleeing and stationary animal for a single pile.

Popper et al. (2014) Unweighted SEL_{cum}		NE location, multi-leg foundation (single pile)			
		Area	Maximum range	Minimum range	Mean range
Fleeing (1.5 ms ⁻¹)	219 dB	< 0.1 km ²	< 100 m	< 100 m	< 100 m
	216 dB	< 0.1 km ²	< 100 m	< 100 m	< 100 m
	210 dB	< 0.1 km ²	< 100 m	< 100 m	< 100 m
	207 dB	< 0.1 km ²	< 100 m	< 100 m	< 100 m
	203 dB	< 0.1 km ²	< 100 m	< 100 m	< 100 m
	186 dB	1,700 km ²	34 km	11 km	22 km
Stationary	219 dB	0.7 km ²	500 m	480 m	490 m
	216 dB	1.9 km ²	800 m	780 m	790 m
	210 dB	12 km ²	2.0 km	2.0 km	2.0 km
	207 dB	30 km ²	3.1 km	3.1 km	3.1 km
	203 dB	94 km ²	5.6 km	5.4 km	5.5 km
	186 dB	3,800 km ²	46 km	23 km	34 km

Table 4-28 Summary of the unweighted SEL_{cum} impact ranges for fish using the Popper et al. (2014) pile driving criteria for the multi-leg foundation modelling at the NE location assuming both a fleeing and stationary animal for two sequentially installed piles.

Popper et al. (2014) Unweighted SEL_{cum}		NE location, multi-leg foundation (2 sequential piles)			
		Area	Maximum range	Minimum range	Mean range
Fleeing (1.5 ms ⁻¹)	219 dB	< 0.1 km ²	< 100 m	< 100 m	< 100 m
	216 dB	< 0.1 km ²	< 100 m	< 100 m	< 100 m
	210 dB	< 0.1 km ²	< 100 m	< 100 m	< 100 m
	207 dB	< 0.1 km ²	< 100 m	< 100 m	< 100 m
	203 dB	< 0.1 km ²	< 100 m	< 100 m	< 100 m
	186 dB	2,200 km ²	40 km	11 km	24 km
Stationary	219 dB	1.9 km ²	800 m	780 m	790 m
	216 dB	4.8 km ²	1.3 km	1.2 km	1.2 km
	210 dB	30 km ²	3.1 km	3.1 km	3.1 km
	207 dB	71 km ²	4.9 km	4.7 km	4.8 km
	203 dB	210 km ²	8.6 km	7.9 km	8.2 km
	186 dB	5,600 km ²	59 km	23 km	41 km

4.2.2 *NW location*

Table 4-29 Summary of the unweighted SPL_{peak} impact ranges for marine mammals using the Southall et al. (2019) impulsive criteria for the multi-leg foundation modelling at the NW location.

Southall et al. (2019) Unweighted SPL_{peak}		NW location, multi-leg foundation			
		Area	Maximum range	Minimum range	Mean range
PTS (Impulsive)	LF (219 dB)	0.01 km ²	< 50 m	< 50 m	< 50 m
	HF (230 dB)	< 0.01 km ²	< 50 m	< 50 m	< 50 m
	VHF (202 dB)	1.2 km ²	620 m	620 m	620 m
	PCW (218 dB)	0.01 km ²	< 50 m	< 50 m	< 50 m
TTS (Impulsive)	LF (213 dB)	0.04 km ²	110 m	110 m	110 m
	HF (224 dB)	< 0.01 km ²	< 50 m	< 50 m	< 50 m
	VHF (196 dB)	7.8 km ²	1.6 km	1.6 km	1.6 km
	PCW (212 dB)	0.05 km ²	130 m	130 m	130 m

Table 4-30 Summary of the weighted SEL_{cum} impact ranges for marine mammals using the Southall et al. (2019) impulsive criteria for the multi-leg foundation modelling at the NW location assuming a fleeing animal for a single pile.

Southall et al. (2019) Weighted SEL_{cum}		NW location, multi-leg foundation (single pile)			
		Area	Maximum range	Minimum range	Mean range
PTS (Impulsive)	LF (183 dB)	75 km ²	9.5 km	< 100 m	3.2 km
	HF (185 dB)	< 0.1 km ²	< 100 m	< 100 m	< 100 m
	VHF (155 dB)	31 km ²	4.7 km	830 m	2.8 km
	PCW (185 dB)	< 0.1 km ²	< 100 m	< 100 m	< 100 m
TTS (Impulsive)	LF (168 dB)	5,800 km ²	79 km	2.9 km	32 km
	HF (170 dB)	< 0.1 km ²	< 100 m	< 100 m	< 100 m
	VHF (140 dB)	3,200 km ²	51 km	8.2 km	27 km
	PCW (170 dB)	1,100 km ²	28 km	6.1 km	16 km

Table 4-31 Summary of the weighted SEL_{cum} for marine mammals using the Southall et al. (2019) impulsive criteria for the multi-leg foundation modelling at the NW location assuming a fleeing animal for two sequentially installed piles.

Southall et al. (2019) Weighted SEL_{cum}		NW location, multi-leg foundation (2 sequential piles)			
		Area	Maximum range	Minimum range	Mean range
PTS (Impulsive)	LF (183 dB)	100 km ²	11 km	< 100 m	3.7 km
	HF (185 dB)	< 0.1 km ²	< 100 m	< 100 m	< 100 m
	VHF (155 dB)	45 km ²	6.0 km	830 m	3.3 km
	PCW (185 dB)	< 0.1 km ²	< 100 m	< 100 m	< 100 m
TTS (Impulsive)	LF (168 dB)	6,000 km ²	81 km	2.9 km	33 km
	HF (170 dB)	< 0.1 km ²	< 100 m	< 100 m	< 100 m
	VHF (140 dB)	3,900 km ²	59 km	8.2 km	30 km
	PCW (170 dB)	1,400 km ²	34 km	6.1 km	19 km

Table 4-32 Summary of the unweighted SPL_{RMS} impact ranges for marine mammals using the NOAA (2005) impulsive criteria for the multi-leg foundation modelling at the NW location.

NOAA (2005) Unweighted SPL_{RMS}		NW location, multi-leg foundation			
		Area	Maximum range	Minimum range	Mean range
Level B	160 dB	2,100 km ²	36 km	15 km	25 km

Table 4-33 Summary of the unweighted SPL_{peak} impact ranges for fish using the Popper et al. (2014) pile driving criteria for the multi-leg foundation modelling at the NW location.

Popper et al. (2014) Unweighted SPL_{peak}	NW location, multi-leg foundation			
	Area	Maximum range	Minimum range	Mean range
213 dB	0.04 km ²	110 m	110 m	110 m
207 dB	0.25 km ²	280 m	280 m	280 m

Table 4-34 Summary of the unweighted SEL_{cum} impact ranges for fish using the Popper et al. (2014) pile driving criteria for the multi-leg foundation modelling at the NW location assuming both a fleeing and stationary animal for a single pile.

Popper et al. (2014) Unweighted SEL_{cum}		NW location, multi-leg foundation (single pile)			
		Area	Maximum range	Minimum range	Mean range
Fleeing (1.5 ms ⁻¹)	219 dB	< 0.1 km ²	< 100 m	< 100 m	< 100 m
	216 dB	< 0.1 km ²	< 100 m	< 100 m	< 100 m
	210 dB	< 0.1 km ²	< 100 m	< 100 m	< 100 m
	207 dB	< 0.1 km ²	< 100 m	< 100 m	< 100 m
	203 dB	< 0.1 km ²	< 100 m	< 100 m	< 100 m
	186 dB	920 km ²	67 km	5.6 km	15 km
Stationary	219 dB	0.7 km ²	480 m	450 m	460 m
	216 dB	1.6 km ²	730 m	700 m	710 m
	210 dB	9.8 km ²	1.8 km	1.8 km	1.8 km
	207 dB	23 km ²	2.8 km	2.7 km	2.7 km
	203 dB	70 km ²	4.9 km	4.6 km	4.7 km
	186 dB	2,400 km ²	39 km	15 km	27 km

Table 4-35 Summary of the unweighted SEL_{cum} impact ranges for fish using the Popper et al. (2014) pile driving criteria for the multi-leg foundation modelling at the NW location assuming both a fleeing and stationary animal for two sequentially installed piles.

Popper et al. (2014) Unweighted SEL_{cum}		NW location, multi-leg foundation (2 sequential piles)			
		Area	Maximum range	Minimum range	Mean range
Fleeing (1.5 ms ⁻¹)	219 dB	< 0.1 km ²	< 100 m	< 100 m	< 100 m
	216 dB	< 0.1 km ²	< 100 m	< 100 m	< 100 m
	210 dB	< 0.1 km ²	< 100 m	< 100 m	< 100 m
	207 dB	< 0.1 km ²	< 100 m	< 100 m	< 100 m
	203 dB	< 0.1 km ²	< 100 m	< 100 m	< 100 m
	186 dB	1,200 km ²	32 km	5.6 km	17 km
Stationary	219 dB	1.6 km ²	730 m	700 m	710 m
	216 dB	4.0 km ²	1.2 km	1.1 km	1.1 km
	210 dB	23 km ²	2.8 km	2.7 km	2.7 km
	207 dB	54 km ²	4.3 km	4.0 km	4.2 km
	203 dB	150 km ²	7.4 km	6.5 km	6.9 km
	186 dB	3,700 km ²	51 km	15 km	32 km

4.2.3 *SE location*

Table 4-36 Summary of the unweighted SPL_{peak} impact ranges for marine mammals using the Southall et al. (2019) impulsive criteria for the multi-leg foundation modelling at the SE location.

Southall et al. (2019) Unweighted SPL_{peak}		SE location, multi-leg foundation			
		Area	Maximum range	Minimum range	Mean range
PTS (Impulsive)	LF (219 dB)	0.01 km ²	< 50 m	< 50 m	< 50 m
	HF (230 dB)	< 0.01 km ²	< 50 m	< 50 m	< 50 m
	VHF (202 dB)	0.5 km ²	690 m	680 m	690 m
	PCW (218 dB)	0.06 km ²	140 m	140 m	140 m
TTS (Impulsive)	LF (213 dB)	0.04 km ²	120 m	110 m	120 m
	HF (224 dB)	< 0.01 km ²	< 50 m	< 50 m	< 50 m
	VHF (196 dB)	9.9 km ²	1.8 km	1.8 km	1.8 km
	PCW (212 dB)	0.06 km ²	140 m	140 m	140 m

Table 4-37 Summary of the weighted SEL_{cum} impact ranges for marine mammals using the Southall et al. (2019) impulsive criteria for the multi-leg foundation modelling at the SE location assuming a fleeing animal for a single pile.

Southall et al. (2019) Weighted SEL_{cum}		SE location, multi-leg foundation (single pile)			
		Area	Maximum range	Minimum range	Mean range
PTS (Impulsive)	LF (183 dB)	300 km ²	15 km	< 100 m	7.7 km
	HF (185 dB)	< 0.1 km ²	< 100 m	< 100 m	< 100 m
	VHF (155 dB)	110 km ²	7.6 km	1.3 km	5.6 km
	PCW (185 dB)	< 0.1 km ²	< 100 m	< 100 m	< 100 m
TTS (Impulsive)	LF (168 dB)	8,200 km ²	95 km	1.5 km	42 km
	HF (170 dB)	< 0.1 km ²	< 100 m	< 100 m	< 100 m
	VHF (140 dB)	5,100 km ²	61 km	5.2 km	36 km
	PCW (170 dB)	2,100 km ²	36 km	3.9 km	24 km

Table 4-38 Summary of the weighted SEL_{cum} for marine mammals using the Southall et al. (2019) impulsive criteria for the multi-leg foundation modelling at the SE location assuming a fleeing animal for two sequentially installed piles.

Southall et al. (2019) Weighted SEL_{cum}		SE location, multi-leg foundation (2 sequential piles)			
		Area	Maximum range	Minimum range	Mean range
PTS (Impulsive)	LF (183 dB)	370 km ²	17 km	< 100 m	8.4 km
	HF (185 dB)	< 0.1 km ²	< 100 m	< 100 m	< 100 m
	VHF (155 dB)	150 km ²	9.5 km	1.3 km	6.5 km
	PCW (185 dB)	< 0.1 km ²	< 100 m	< 100 m	< 100 m
TTS (Impulsive)	LF (168 dB)	8,500 km ²	95 km	1.5 km	43 km
	HF (170 dB)	< 0.1 km ²	< 100 m	< 100 m	< 100 m
	VHF (140 dB)	5,900 km ²	71 km	5.2 km	39 km
	PCW (170 dB)	2,700 km ²	44 km	3.9 km	27 km

Table 4-39 Summary of the unweighted SPL_{RMS} impact ranges for marine mammals using the NOAA (2005) impulsive criteria for the multi-leg foundation modelling at the SE location.

NOAA (2005) Unweighted SPL_{RMS}		SE location, multi-leg foundation			
		Area	Maximum range	Minimum range	Mean range
Level B	160 dB	3,400 km ²	42 km	11 km	32 km

Table 4-40 Summary of the unweighted SPL_{peak} impact ranges for fish using the Popper et al. (2014) pile driving criteria for the multi-leg foundation modelling at the SE location.

Popper et al. (2014) Unweighted SPL_{peak}		SE location, multi-leg foundation			
		Area	Maximum range	Minimum range	Mean range
	213 dB	0.04 km ²	120 m	110 m	120 m
	207 dB	0.29 km ²	310 m	300 m	310 m

Table 4-41 Summary of the unweighted SEL_{cum} impact ranges for fish using the Popper et al. (2014) pile driving criteria for the multi-leg foundation modelling at the SE location assuming both a fleeing and stationary animal for a single pile.

Popper et al. (2014) Unweighted SEL_{cum}		SE location, multi-leg foundation (single pile)			
		Area	Maximum range	Minimum range	Mean range
Fleeing (1.5 ms ⁻¹)	219 dB	< 0.1 km ²	< 100 m	< 100 m	< 100 m
	216 dB	< 0.1 km ²	< 100 m	< 100 m	< 100 m
	210 dB	< 0.1 km ²	< 100 m	< 100 m	< 100 m
	207 dB	< 0.1 km ²	< 100 m	< 100 m	< 100 m
	203 dB	< 0.1 km ²	< 100 m	< 100 m	< 100 m
	186 dB	1,800 km ²	34 km	3.6 km	22 km
Stationary	219 dB	0.7 km ²	500 m	480 m	490 m
	216 dB	1.9 km ²	800 m	780 m	790 m
	210 dB	12 km ²	2.0 km	2.0 km	2.0 km
	207 dB	31 km ²	3.2 km	3.1 km	3.1 km
	203 dB	99 km ²	5.7 km	5.5 km	5.6 km
	186 dB	3,800 km ²	45 km	11 km	34 km

Table 4-42 Summary of the unweighted SEL_{cum} impact ranges for fish using the Popper et al. (2014) pile driving criteria for the multi-leg foundation modelling at the SE location assuming both a fleeing and stationary animal for two sequentially installed piles.

Popper et al. (2014) Unweighted SEL_{cum}		SE location, multi-leg foundation (2 sequential piles)			
		Area	Maximum range	Minimum range	Mean range
Fleeing (1.5 ms ⁻¹)	219 dB	< 0.1 km ²	< 100 m	< 100 m	< 100 m
	216 dB	< 0.1 km ²	< 100 m	< 100 m	< 100 m
	210 dB	< 0.1 km ²	< 100 m	< 100 m	< 100 m
	207 dB	< 0.1 km ²	< 100 m	< 100 m	< 100 m
	203 dB	< 0.1 km ²	< 100 m	< 100 m	< 100 m
	186 dB	2,300 km ²	40 km	3.6 km	25 km
Stationary	219 dB	1.9 km ²	800 m	780 m	790 m
	216 dB	5.0 km ²	1.3 km	1.3 km	1.3 km
	210 dB	31 km ²	3.2 km	3.1 km	3.2 km
	207 dB	75 km ²	5.0 km	4.8 km	4.9 km
	203 dB	220 km ²	8.7 km	8.0 km	8.4 km
	186 dB	5,800 km ²	59 km	11 km	41 km

4.2.4 SW location

Table 4-43 Summary of the unweighted SPL_{peak} impact ranges for marine mammals using the Southall et al. (2019) impulsive criteria for the multi-leg foundation modelling at the SW location.

Southall et al. (2019) Unweighted SPL_{peak}		SW location, multi-leg foundation			
		Area	Maximum range	Minimum range	Mean range
PTS (Impulsive)	LF (219 dB)	0.01 km ²	< 50 m	< 50 m	< 50 m
	HF (230 dB)	< 0.01 km ²	< 50 m	< 50 m	< 50 m
	VHF (202 dB)	1.4 km ²	660 m	660 m	660 m
	PCW (218 dB)	0.01 km ²	50 m	50 m	50 m
TTS (Impulsive)	LF (213 dB)	0.04 km ²	110 m	110 m	110 m
	HF (224 dB)	< 0.01 km ²	< 50 m	< 50 m	< 50 m
	VHF (196 dB)	9.0 km ²	1.7 km	1.7 km	1.7 km
	PCW (212 dB)	0.05 km ²	130 m	130 m	130 m

Table 4-44 Summary of the weighted SEL_{cum} impact ranges for marine mammals using the Southall et al. (2019) impulsive criteria for the multi-leg foundation modelling at the SW location assuming a fleeing animal for a single pile.

Southall et al. (2019) Weighted SEL_{cum}		SW location, multi-leg foundation (single pile)			
		Area	Maximum range	Minimum range	Mean range
PTS (Impulsive)	LF (183 dB)	180 km ²	13 km	< 100 m	5.5 km
	HF (185 dB)	< 0.1 km ²	< 100 m	< 100 m	< 100 m
	VHF (155 dB)	62 km ²	6.5 km ²	< 100 m	4.0 km
	PCW (185 dB)	< 0.1 km ²	< 100 m	< 100 m	< 100 m
TTS (Impulsive)	LF (168 dB)	7,300 km ²	90 km	< 100 m	37 km
	HF (170 dB)	< 0.1 km ²	< 100 m	< 100 m	< 100 m
	VHF (140 dB)	4,200 km ²	58 km	1.3 km	32 km
	PCW (170 dB)	1,500 km ²	33 km	400 m	20 km

Table 4-45 Summary of the weighted SEL_{cum} for marine mammals using the Southall et al. (2019) impulsive criteria for the multi-leg foundation modelling at the SW location assuming a fleeing animal for two sequentially installed piles.

Southall et al. (2019) Weighted SEL_{cum}		SW location, multi-leg foundation (2 sequential piles)			
		Area	Maximum range	Minimum range	Mean range
PTS (Impulsive)	LF (183 dB)	230 km ²	15 km	< 100m	6.1 km
	HF (185 dB)	< 0.1 km ²	< 100 m	< 100 m	< 100 m
	VHF (155 dB)	90 km ²	8.2 km	< 100 m	4.7 km
	PCW (185 dB)	< 0.1 km ²	< 100 m	< 100 m	< 100 m
TTS (Impulsive)	LF (168 dB)	7,500 km ²	91 km	< 100 m	38 km
	HF (170 dB)	< 0.1 km ²	< 100 m	< 100 m	< 100 m
	VHF (140 dB)	5,000 km ²	66 km	1.3 km	34 km
	PCW (170 dB)	1,800 km ²	36 km	400 m	21 km

Table 4-46 Summary of the unweighted SPL_{RMS} impact ranges for marine mammals using the NOAA (2005) impulsive criteria for the multi-leg foundation modelling at the SW location.

NOAA (2005) Unweighted SPL_{RMS}		SW location, multi-leg foundation			
		Area	Maximum range	Minimum range	Mean range
Level B	160 dB	2,700 km ²	40 km	6.5 km	28 km

Table 4-47 Summary of the unweighted SPL_{peak} impact ranges for fish using the Popper et al. (2014) pile driving criteria for the multi-leg foundation modelling at the SW location.

Popper et al. (2014) Unweighted SPL_{peak}	SW location, multi-leg foundation			
	Area	Maximum range	Minimum range	Mean range
213 dB	0.04 km ²	110 m	110 m	110 m
207 dB	0.27 km ²	300 m	300 m	300 m

Table 4-48 Summary of the unweighted SEL_{cum} impact ranges for fish using the Popper et al. (2014) pile driving criteria for the multi-leg foundation modelling at the SW location assuming both a fleeing and stationary animal for a single pile.

Popper et al. (2014) Unweighted SEL_{cum}		SW location, multi-leg foundation (single pile)			
		Area	Maximum range	Minimum range	Mean range
Fleeing (1.5 ms ⁻¹)	219 dB	< 0.1 km ²	< 100 m	< 100 m	< 100 m
	216 dB	< 0.1 km ²	< 100 m	< 100 m	< 100 m
	210 dB	< 0.1 km ²	< 100 m	< 100 m	< 100 m
	207 dB	< 0.1 km ²	< 100 m	< 100 m	< 100 m
	203 dB	< 0.1 km ²	< 100 m	< 100 m	< 100 m
	186 dB	1,300 km ²	31 km	< 100 m	18 km
Stationary	219 dB	0.7 km ²	500 m	480 m	490 m
	216 dB	1.8 km ²	780 m	750 m	760 m
	210 dB	11 km ²	1.9 km	1.9 km	1.9 km
	207 dB	28 km ²	3.0 km	2.9 km	3.0 km
	203 dB	85 km ²	5.4 km	5.0 km	5.2 km
	186 dB	3,000 km ²	43 km	6.6 km	29 km

Table 4-49 Summary of the unweighted SEL_{cum} impact ranges for fish using the Popper et al. (2014) pile driving criteria for the multi-leg foundation modelling at the SW location assuming both a fleeing and stationary animal for two sequentially installed piles.

Popper et al. (2014) Unweighted SEL_{cum}		SW location, multi-leg foundation (2 sequential piles)			
		Area	Maximum range	Minimum range	Mean range
Fleeing (1.5 ms ⁻¹)	219 dB	< 0.1 km ²	< 100 m	< 100 m	< 100 m
	216 dB	< 0.1 km ²	< 100 m	< 100 m	< 100 m
	210 dB	< 0.1 km ²	< 100 m	< 100 m	< 100 m
	207 dB	< 0.1 km ²	< 100 m	< 100 m	< 100 m
	203 dB	< 0.1 km ²	< 100 m	< 100 m	< 100 m
	186 dB	1,800 km ²	37 km	< 100 m	20 km
Stationary	219 dB	1.8 km ²	780 m	750 m	760 m
	216 dB	4.6 km ²	1.2 km	1.2 km	1.2 km
	210 dB	28 km ²	3.0 km	2.9 km	3.0 km
	207 dB	65 km ²	4.7 km	4.4 km	4.6 km
	203 dB	190 km ²	8.2 km	6.6 km	7.7 km
	186 dB	4,700 km ²	56 km	6.6 km	36 km

5 Other noise sources

Although impact piling is expected to be the greatest overall noise source during offshore construction and development (Bailey *et al.*, 2014), several other anthropogenic noise sources may be present. Each of these has been considered, and relevant biological noise criteria presented, in this section.

Table 5-1 provides a summary of the various noise producing sources, aside from impact piling, that are expected to be present during the construction and operation of the proposed development.

Table 5-1 Summary of the possible noise making activities at the proposed development other than impact piling.

Activity	Description
Cable laying	Noise from the cable laying vessel and any other associated noise during the offshore cable installation.
Dredging	Dredging may be required on site for seabed preparation work for certain foundation options, as well as for the export cable, array cables and interconnector cable installation. Suction dredging has been assumed as a worst-case.
Drilling	There is the potential for WTG foundations to be installed using drilling depending on seabed type or if a pile refuses during impact piling operations.
Rock placement	Potentially required on site for installation of offshore cables (cable crossings and cable protection) and scour protection around foundation structures.
Trenching	Plough trenching may be required during offshore cable installation.
Vessel noise	Jack-up barges for piling substructure and WTG installation. Other large and medium sized vessels to carry out other construction tasks and anchor handling. Other small vessels for crew transport and maintenance on site.
Operational WTG	Noise transmitted through the water from operational WTG. The project options give WTGs with rotor diameters of between 250 and 276 m, in line with expected power output.
UXO clearance	Should Unexploded Ordnance (UXO) exist within the the proposed development area, this would need to be cleared before construction can begin.

Most of these activities are considered in section 5.1, with operational WTG noise and UXO clearance assessed in sections 5.2 and 5.3 respectively.

The NPL Good Practice Guide 133 for underwater noise measurements (Robinson *et al.*, 2014) indicates that under certain circumstances, a simple modelling approach may be considered acceptable. Such an approach has been used for these noise sources, which are variously either quiet compared to impact piling (e.g., cable laying, drilling and dredging), or where detailed modelling would imply unjustified accuracy (e.g., where data is limited such as with UXO detonation). The high-level overview of modelling that has been presented here is considered sufficient and there would be little benefit in using a more detailed model at this stage. The limitations of this approach are noted, including the lack of frequency or bathymetric dependence.

5.1 Noise-making activities

For the purposes of identifying the greatest noise levels, approximate subsea noise levels have been predicted using a simple modelling approach based on measurement data from Subacoustech Environmental's own underwater noise measurement database, scaled to relevant parameters for the site and to the specific noise sources to be used. The calculation of underwater noise transmission loss for the non-impulsive sources is based on an empirical analysis of the noise measurements taken along transects around these sources by Subacoustech Environmental. The predictions use the following principle fitted to the measured data, where R is the range from the source, N is the transmission loss, and α is the absorption loss:

$$Received\ level = Source\ level\ (SL) - N \log_{10} R - \alpha R$$

Predicted source levels and propagation calculations for the construction activities are presented in Table 5-2 along with a summary of the number of datasets used in each case. As previously, all SEL_{cum} criteria use the same assumptions as presented in section 2.2, and ranges smaller than 50 m (single strike) and 100 m (cumulative) have not been presented. It should be reiterated that this modelling approach does not take bathymetry or any other environmental conditions into account, and as such can be applied to any location at, or surrounding, the proposed development site.

Table 5-2 Summary of the estimated unweighted source levels and transmission losses for the different considered noise sources related to construction.

Source	Estimated unweighted source level	Transmission loss parameters	Comments
Cable laying	171 dB re 1 µPa @ 1 m (RMS)	$N: 13, \alpha: 0$ (no absorption)	Based on 11 datasets from a pipe laying vessel measuring 300 m in length; this is considered a worst-case noise source for cable laying operations.
Dredging (Backhoe)	165 dB re 1 µPa @ 1 m (RMS)	$N: 19, \alpha: 0.0009$	Based on three datasets from backhoe dredgers.
Dredging (Suction)	186 dB re 1 µPa @ 1 m (RMS)	$N: 19, \alpha: 0.0009$	Based on five datasets from suction and cutter suction dredgers.
Drilling	169 dB re 1 µPa @ 1 m (RMS)	$N: 16, \alpha: 0.0006$	Based on six datasets from various drilling operations covering ground investigations and pile installation. A 200 kW drill has been assumed for modelling.
Rock placement	172 dB re 1 µPa @ 1 m (RMS)	$N: 12, \alpha: 0.0005$	Based on four datasets from rock placement vessel 'Rollingstone.'
Trenching	172 dB re 1 µPa @ 1 m (RMS)	$N: 13, \alpha: 0.0004$	Based on three datasets of measurements from trenching vessels more than 100 m in length.
Vessel noise (large)	168 dB re 1 µPa @ 1 m (RMS)	$N: 12, \alpha: 0.0021$	Based on five datasets of large vessels including container ships, FPSOs and other vessels more than 100 m in length. Vessel speed assumed as 10 knots.
Vessel noise (medium)	161 dB re 1 µPa @ 1 m (RMS)	$N: 12, \alpha: 0.0021$	Based on three datasets of moderate sized vessels less than 100 m in length. Vessel speed assumed as 10 knots.

All values of N and α are empirically derived and will be linked to the size and shape of the machinery and the noise source on it, the transect on which the measurements are taken and the local environment at the time.

For SEL_{cum} calculations in this section, the duration the noise is present also needs to be considered, with all sources assumed to operate constantly for 24 hours to give a worst-case assessment of the noise. Due to the low noise level of the sources considered both fleeing and stationary animals have been included for all SEL_{cum} criteria.

To account for the weightings required for modelling using the Southall *et al.* (2019) criteria (see section 2.2.1), reductions in source level have been applied to the various noise sources; Table 5-1 shows the representative noise measurements used for this, which have been adjusted for the source

levels given in Table 5-2. Details of the reductions in sources levels for each of the weightings used for modelling are given in Table 5-3.

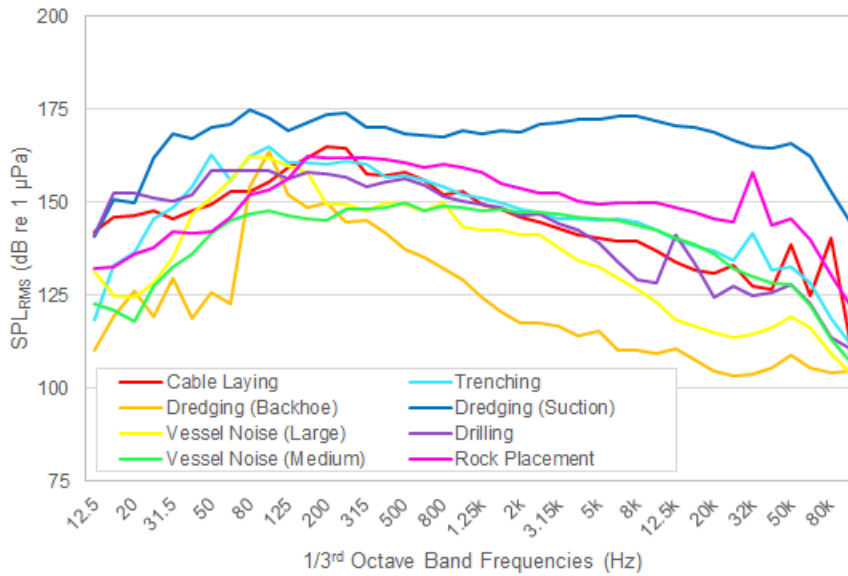


Figure 5-1 Summary of the 1/3rd octave frequency bands to which the Southall *et al.* (2019) weightings were applied in the simple modelling.

Table 5-3 Reductions in source level for the different construction noise sources considered when the Southall *et al.* (2019) weightings are applied.

Source	Reduction in source level from the unweighted level (Southall <i>et al.</i> , 2019)			
	LF	HF	VHF	PCW
Cable laying	3.6 dB	22.9 dB	23.9 dB	13.2 dB
Dredging	2.5 dB	7.9 dB	9.6 dB	4.2 dB
Drilling	4.0 dB	25.8 dB	48.7 dB	13.2 dB
Rock placement	1.6 dB	11.9 dB	12.5 dB	8.2 dB
Trenching	4.1 dB	23.0 dB	25.0 dB	13.7 dB
Vessel noise	5.5 dB	34.4 dB	38.6 dB	17.4 dB

Table 5-4 to Table 5-6 summarise the predicted impact ranges for these noise sources. All the sources in this section are considered non-impulsive or continuous. As with the previous results, ranges smaller than 50 m (single strike) and 100 m (cumulative) have not been presented.

Given the modelled impact ranges, almost any marine mammal would have to be closer than 100 m from the continuous noise source at the start of the activity to acquire the necessary exposure to induce PTS as per Southall *et al.* (2019). The exposure calculation assumes the same receptor swim speeds as the impact piling modelling in section 4. As explained in section 3.3, this would only mean that the receptor reaches the ‘onset’ stage at these ranges, which is the minimum exposure that could potentially lead to the start of an effect and may only be marginal. In most hearing groups, the noise levels are low enough that there is a minimal risk.

For fish, there is a minimal risk of any injury or TTS with reference to the SPL_{RMS} guidance for continuous noise sources in Popper *et al.* (2014).

Table 5-4 Summary of the impact ranges for the different noise sources related to construction using the non-impulsive criteria from Southall et al. (2019) for marine mammals assuming a fleeing animal.

Southall et al. (2019) Weighted SEL _{cum}	PTS (non-impulsive)				TTS (non-impulsive)			
	LF 199 dB	HF 198 dB	VHF 173 dB	PCW 201 dB	LF 179 dB	HF 178 dB	VHF 153 dB	PCW 181 dB
Cable laying	< 100 m	< 100 m	< 100 m	< 100 m	< 100 m	< 100 m	110 m	< 100 m
Dredging (Backhoe)	< 100 m	< 100 m	< 100 m	< 100 m	< 100 m	< 100 m	< 100 m	< 100 m
Dredging (Suction)	< 100 m	< 100 m	< 100 m	< 100 m	< 100 m	< 100 m	230 m	< 100 m
Drilling	< 100 m	< 100 m	< 100 m	< 100 m	< 100 m	< 100 m	< 100 m	< 100 m
Rock placement	< 100 m	< 100 m	< 100 m	< 100 m	< 100 m	< 100 m	990 m	< 100 m
Trenching	< 100 m	< 100 m	< 100 m	< 100 m	< 100 m	< 100 m	< 100 m	< 100 m
Vessel noise (large)	< 100 m	< 100 m	< 100 m	< 100 m	< 100 m	< 100 m	< 100 m	< 100 m
Vessel noise (medium)	< 100 m	< 100 m	< 100 m	< 100 m	< 100 m	< 100 m	< 100 m	< 100 m

Table 5-5 Summary of the impact ranges for the different noise sources related to construction using the non-impulsive criteria from Southall et al. (2019) for marine mammals assuming a stationary animal.

Southall et al. (2019) Weighted SEL _{cum}	PTS (non-impulsive)				TTS (non-impulsive)			
	LF 199 dB	HF 198 dB	VHF 173 dB	PCW 201 dB	LF 179 dB	HF 178 dB	VHF 153 dB	PCW 181 dB
Cable laying	< 100 m	< 100 m	< 100 m	< 100 m	810 m	< 100 m	2.3 km	110 m
Dredging (Backhoe)	< 100 m	< 100 m	< 100 m	< 100 m	< 100 m	< 100 m	< 100 m	< 100 m
Dredging (Suction)	< 100 m	< 100 m	570 m	< 100 m	640 m	390 m	4.3 km	420 m
Drilling	< 100 m	< 100 m	< 100 m	< 100 m	160 m	< 100 m	200 m	< 100 m
Rock placement	< 100 m	< 100 m	900 m	< 100 m	2.1 km	410 m	13 km	460 m
Trenching	< 100 m	< 100 m	< 100 m	< 100 m	830 m	< 100 m	1.9 km	120 m
Vessel noise (large)	< 100 m	< 100 m	< 100 m	< 100 m	480 m	< 100 m	140 m	< 100 m
Vessel noise (medium)	< 100 m	< 100 m	< 100 m	< 100 m	130 m	< 100 m	< 100 m	< 100 m

Ranges for a stationary animal are theoretical only and will be over-conservative as the assumption is that the animal remains stationary in respect to the noise source, when the source itself, as well as the receiver animal, is moving in most cases.

Table 5-6 Summary of the impact ranges for the different noise sources related to construction using the continuous noise criteria from Popper et al. (2014) for fish (swim bladder involved in hearing).

Popper et al. (2014) Unweighted SPL _{RMS}	Recoverable injury 170 dB (48 hours)	TTS 158 dB (12 hours)
Cable laying	< 50 m	< 50 m
Dredging (Backhoe)	< 50 m	< 50 m
Dredging (Suction)	< 50 m	< 50 m
Drilling	< 50 m	< 50 m
Rock placement	< 50 m	< 50 m
Trenching	< 50 m	< 50 m
Vessel noise (large)	< 50 m	< 50 m
Vessel noise (medium)	< 50 m	< 50 m

5.2 Operational WTG noise

The main source of underwater noise from operational WTGs will be mechanically generated vibration from the rotating machinery in the WTGs, which is transmitted into the sea through the structure of the WTG tower and foundations (Nedwell *et al.*, 2003; Tougaard *et al.*, 2020). Noise levels generated above the water surface are low enough that no significant airborne source will pass from the air to the water.

Tougaard *et al.* (2020) published a study investigating underwater noise data from 17 operational WTGs in Europe and the United States, from 0.2 MW to 6.15 MW nominal power output. The paper identified the nominal power output and wind speed as the two primary driving factors for underwater noise generation. Although the datasets were acquired under different conditions, the authors devised a formula based on the published data for the operational wind farms, allowing a broadband noise level to be estimated based on the application of wind speed, turbine size (by nominal power output) and distance from the turbine:

$$L_{eq} = C + \alpha \log_{10} \left(\frac{\text{distance}}{100 \text{ m}} \right) + \beta \log_{10} \left(\frac{\text{wind speed}}{10 \text{ ms}^{-1}} \right) + \gamma \log_{10} \left(\frac{\text{turbine size}}{1 \text{ MW}} \right)$$

Where C is a fixed constant and the coefficients α , β , and γ are derived from the empirical data for the 17 datasets.

The WTG models considered at by the Developer are larger than those used for the estimation above, meaning caution must be used when considering the results presented in this section. Figure 5-2 presents a level against range plot for the WTG presented in Project Options 1 and 2 using the Tougaard *et al.* (2020) calculation, assuming an average 6 ms^{-1} wind speed.

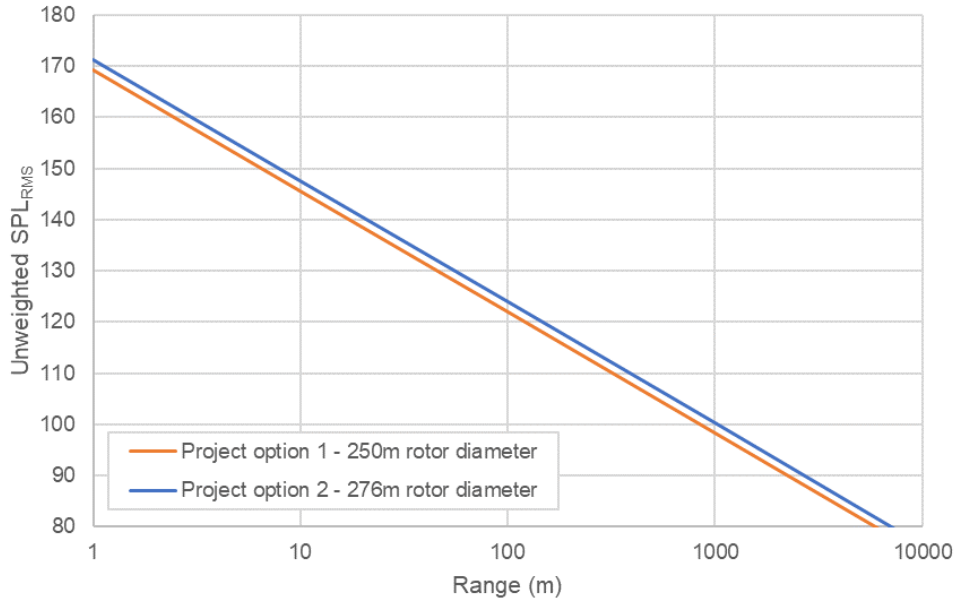


Figure 5-2 Predicted unweighted SPL_{RMS} for the operational WTGs considered for the proposed development using the calculation from Tougaard et al. (2020).

Using this data, a summary of the predicted impact ranges has been produced, shown in Table 5-7 and Table 5-8. All SEL_{cum} criteria use the same assumptions as presented in section 2.2, and ranges smaller than 50 m (single strike) and 100 m (cumulative) have not been presented. The operational WTG source is considered a non-impulsive or continuous source. For SEL_{cum} calculations, a stationary animal has been used and it is assumed that the operational WTG noise is present 24 hours a day.

Table 5-7 Summary of the operational WTG noise impact ranges using the non-impulsive noise criteria from Southall et al. (2019) for marine mammals.

Southall et al. (2019) Weighted SEL _{cum}		Operational WTG (Project Option 1, 250 m diameter)	Operational WTG (Project Option 2, 276 m diameter)
PTS (non-impulsive)	199 dB (LF SEL _{cum})	< 100 m	< 100 m
	198 dB (HF SEL _{cum})	< 100 m	< 100 m
	173 dB (VHF SEL _{cum})	< 100 m	< 100 m
	201 dB (PCW SEL _{cum})	< 100 m	< 100 m
TTS (non-impulsive)	179 dB (LF SEL _{cum})	< 100 m	< 100 m
	178 dB (HF SEL _{cum})	< 100 m	< 100 m
	153 dB (VHF SEL _{cum})	< 100 m	< 100 m
	181 dB (PCW SEL _{cum})	< 100 m	< 100 m

Table 5-8 Summary of the operational WTG noise impact ranges using the continuous noise criteria from Popper et al. (2014) for fish (swim bladder involved in hearing).

Popper et al. (2014) Unweighted SPL _{RMS}	Operational WTG (Project Option 1, 250 m diameter)	Operational WTG (Project Option 2, 276 m diameter)
Recoverable injury 170 dB (48 hours) Unweighted SPL _{RMS}	< 50 m	< 50 m
TTS 158 dB (12 hours) Unweighted SPL _{RMS}	< 50 m	< 50 m

These results show that, for operational WTGs, injury risk is minimal. Taking the results from this and the previous section (5.1), and comparing them to the impact piling results in section 4, it is clear that noise from impact piling results in much greater noise levels and impact ranges, and hence should be considered the activity which has the potential to have the greatest effect during the construction and operation of the proposed development.

Stöber & Thomsen (2021) produced a similar study of an operational WTG dataset and raises the potential for behavioural disturbance caused by larger WTGs. While prospective WTG sizes are increasing, Stöber & Thomsen conclude that these might only have limited impacts related to behavioural response on marine mammals and fish, although there is considerable uncertainty in criteria available to assess these. However, based on the highly precautionary NOAA Level B behavioural threshold (120 dB SPL_{RMS}, see NOAA, 2005) that the study utilises, it is estimated that the WTGs may only reach that threshold at around 150 m away. As the distance between turbines at the proposed development is predicted to be greater than this, any array effect from the WTGs is not expected.

5.3 UXO clearance

It is possible that UXO devices with a range of charge weights (or quantity of contained explosive) are present within the offshore development area. These would require to be cleared before any construction can begin. When modelling potential noise from UXO clearance, a variety of explosive types need to be considered, with the potential that many have been subject to degradation and burying over time. Two otherwise identical explosive devices are likely to produce different blasts in the case where one has spent an extended period on the seabed. A selection of explosive sizes has been considered based on what might be present, and in each case, it has been assumed that the maximum explosive charge in each device is present and either detonates with the clearance (high-order), or alternatively a clearance method such as deflagration (low-order) can be used.

5.3.1 *Estimation of underwater noise levels*

5.3.1.1 *High-order clearance*

The noise produced by the detonation of explosives is affected by several different elements, only one of which can easily be factored into a calculation: the charge weight. In this case the charge weight is based on the equivalent weight of TNT. Many other elements relating to its situation (e.g., its design, composition, age, position, orientation, whether it is covered by sediment) and exactly how they will affect the sound produced by detonation are usually unknown and cannot be directly considered in this type of assessment. This leads to a high degree of uncertainty in the estimation of the source noise level. A worst-case estimation has therefore been used for calculations, assuming the UXO to be detonated is not buried, degraded or subject to any other significant attenuation from its 'as new' condition. It assumes that a 'high-order' clearance technique is used, using an external 'donor charge' initiator to detonate the explosive material in the UXO, producing a blast wave equivalent to full detonation of the device.

The consequence of this is that the noise levels produced, particularly by the larger explosives under consideration, are likely to be over-estimated as some degree of degradation would be expected.

The maximum equivalent charge weight for the potential UXO devices that could be present within the offshore development area has been estimated as 525 kg. This has been modelled alongside a range of smaller devices, at charge weights of 25, 55, 120, and 240 kg. In each case, an additional donor weight of 0.5 kg has been included to initiate detonation.

Estimation of the source noise level for each charge weight has been carried out in accordance with the methodology of Soloway and Dahl (2014), which follows Arons (1954) and the Marine Technical Directorate Ltd. (MTD) (1996).

5.3.1.2 Low-order clearance

Other techniques are being considered to reduce the impact of noise impacts from high order UXO clearance, caused by detonation of the main charge of the UXO. Deflagration is such an alternative technique, intended to result in a 'low order' burn of the explosive material in a UXO, which destroys, but does not detonate, the internal explosive.

Deflagration is a safer technique for UXO disposal as it is intended to avoid the high pressures associated with an explosion, which would lead to an increased risk of adverse effects to marine life. Where the UXO device cannot be moved, deflagration represents a significant improvement over high-order clearance in respect to environmental effects.

Where the technique proceeds as intended, it is still not without noise impact. The process requires an initial shaped explosive donor charge, typically less than 250 g, to breach the casing and ignite the internal high explosive (HE) material without full detonation. The shaped charge and burn will both produce noise, although it will be significantly less than the high order detonation of the much larger UXO. It may not destroy all of the HE, necessitating further deflagration events or collection of the remnants. The deflagration may produce an unintentional high order event.

For calculation of the scenario of total destruction of the HE material using deflagration, it is anticipated that the initial shaped charge is the greatest source of noise (Cheong *et al.* 2020). The shaped charge is treated as a bulk charge with NEQ determined according to the size of UXO on which it is placed. A prediction of this impact is based on a charge weight of 250 g. The worst-case scenario would of course be a high order detonation with maximum pressures from complete detonation of the UXO, and this has also been used in the calculation of impact for comparison.

5.3.2 Estimation of underwater noise propagation

For this assessment, the attenuation of the noise from UXO detonation has been accounted for in calculations using geometric spreading and a sound absorption coefficient, primarily using the methodologies cited in Soloway and Dahl (2014), which establishes a trend based on measured data in open water. These are, for SPL_{peak} :

$$SPL_{peak} = 52.4 \times 10^6 \left(\frac{R}{W^{1/3}} \right)^{-1.13}$$

and for SEL_{ss}

$$SEL = 6.14 \times \log_{10} \left(W^{1/3} \left(\frac{R}{W^{1/3}} \right)^{-2.12} \right) + 219$$

where W is the equivalent charge weight for TNT in kilograms and R is the range from the source.

These equations give a relatively simple calculation which can be used to give an indication of the range of effect. The equation does not consider variable bathymetry or seabed type, and thus calculation results will be the same regardless of where it is used. An attenuation correction can be added to the Soloway and Dahl (2014) equations for the absorption over long ranges (i.e., of the order of thousands of metres), based on measurements of high intensity noise propagation taken in the North Sea and Irish Sea. This uses standard frequency-based absorption coefficients for the seawater conditions expected in the region.

Despite this attenuation correction, the resulting noise levels still need to be considered carefully. For example, SPL_{peak} noise levels over larger distances are difficult to predict accurately (von Benda-Beckmann *et al.*, 2015). Soloway and Dahl (2014) only verify results from the equation above for small charges at ranges of less than 1 km, although the results are similar to the measurements presented by von Benda-Beckmann *et al.* (2015). At longer ranges, greater confidence is expected with the SEL calculations.

A further limitation in the Soloway and Dahl (2014) equations that must be considered are that variations in noise levels at different depths are not considered. Where animals are swimming near the surface, the acoustics can cause the noise level, and hence the exposure, to be lower (MTD, 1996). The risk to animals near the surface may therefore be lower than indicated by the impact ranges and therefore the results presented can be considered conservative in respect of the impact at different depths.

Additionally, an impulsive wave tends to be smoothed (i.e., the pulse becomes longer) over distance (Cudahy and Parvin, 2001), meaning the injurious potential of a wave at greater range can be even lower than just a reduction in the absolute noise level. An assessment in respect of SEL is considered preferential at long range as it considers the overall energy, and the degree of smoothing of the peak with increasing distance is less critical.

The selection of assessment criteria must also be considered in light of this. As discussed in section 2.2.1, the smoothing of the pulse at range means that a pulse may be considered non-impulsive with distance, suggesting that, at greater ranges, it may be more appropriate to use the non-impulsive criteria. This consideration may begin at 3.5 km (Hastie *et al.*, 2019).

A summary of the unweighted UXO clearance source levels, calculated using the equations above, are given in Table 5-9.

Table 5-9 Summary of the unweighted SPL_{peak} and SEL_{ss} source levels used for UXO clearance modelling.

Charge weight	SPL_{peak} source level	SEL_{ss} source level
Low order (0.25 kg)	269.8 dB re 1 μ Pa @ 1 m	215.2 dB re 1 μ Pa ² s @ 1 m
25 kg + donor	284.9 dB re 1 μ Pa @ 1 m	228.0 dB re 1 μ Pa ² s @ 1 m
55 kg + donor	287.5 dB re 1 μ Pa @ 1 m	230.1 dB re 1 μ Pa ² s @ 1 m
120 kg + donor	290.0 dB re 1 μ Pa @ 1 m	232.3 dB re 1 μ Pa ² s @ 1 m
240 kg + donor	292.3 dB re 1 μ Pa @ 1 m	234.2 dB re 1 μ Pa ² s @ 1 m
525 kg + donor	294.8 dB re 1 μ Pa @ 1 m	236.4 dB re 1 μ Pa ² s @ 1 m

5.3.3 Impact ranges

Table 5-10 to Table 5-13 present the impact ranges for UXO detonation, considering various charge weights and impact criteria. It should be noted that Popper *et al.* (2014) gives specific impact criteria for explosions (Table 2-6). A UXO detonation source is defined as a single pulse, and as such the SEL_{cum} criteria from Southall *et al.* (2019) have been given as SEL_{ss} in the tables below. Thus, fleeing animal assumptions do not apply. As with the previous sections, ranges smaller than 50 m have not been presented.

Although the impact ranges in Table 5-10 to Table 5-13 are large, the duration the noise is present must also be considered. For the detonation of a UXO, each explosion is a single noise event, compared to the multiple pulse nature and longer durations of impact piling.

*Table 5-10 Summary of the PTS and TTS impact ranges for UXO detonation using the impulsive, unweighted SPL_{peak} noise criteria from Southall *et al.* (2019) for marine mammals.*

Southall <i>et al.</i> (2019) Unweighted SPL_{peak}	PTS (impulsive)				TTS (impulsive)			
	LF 219 dB	HF 230 dB	VHF 202 dB	PCW 218 dB	LF 213 dB	HF 224 dB	VHF 196 dB	PCW 212 dB
Low order (0.25 kg)	170 m	60m	990 m	190 m	320 m	100 m	1.8 km	360 m
25 kg + donor	820 m	260 m	4.6 km	910 m	1.5 km	490 m	8.5 km	1.6 km
55 kg + donor	1.0 km	340 m	6.0 km	1.1 km	1.9 km	640 m	11 km	2.1 km
120 kg + donor	1.3 km	450 m	7.8 km	1.5 km	2.5 km	830 m	14 km	2.8 km
240 kg + donor	1.7 km	560 m	9.8 km	1.9 km	3.2 km	1.0 km	18 km	3.5 km
525 kg + donor	2.2 km	730 m	12 km	2.5 km	4.1 km	1.3 km	23 km	4.6 km

Table 5-11 Summary of the PTS and TTS impact ranges for UXO detonation using the impulsive, weighted SEL_{ss} noise criteria from Southall et al. (2019) for marine mammals.

Southall et al. (2019) Weighted SEL _{ss}	PTS (impulsive)				TTS (impulsive)			
	LF 183 dB	HF 185 dB	VHF 155 dB	PCW 185 dB	LF 168 dB	HF 170 dB	VHF 140 dB	PCW 170 dB
Low order (0.25 kg)	230 m	< 50 m	80 m	40 m	3.2 km	< 50 m	750 m	570 m
25 kg + donor	2.2 km	< 50 m	570 m	390 m	29 km	150 m	2.4 km	5.2 km
55 kg + donor	3.2 km	< 50 m	740 m	570 m	41 km	210 m	2.8 km	7.5 km
120 kg + donor	4.7 km	< 50 m	950 m	830 m	57 km	300 m	3.2 km	10 km
240 kg + donor	6.5 km	< 50 m	1.1 km	1.1 km	76 km	390 m	3.5 km	14 km
525 kg + donor	9.5 km	50 m	1.4 km	1.6 km	100 km	530 m	4.0 km	19 km

Table 5-12 Summary of the PTS and TTS impact ranges for UXO detonation using the non-impulsive, weighted SEL_{ss} noise criteria from Southall et al. (2019) for marine mammals.

Southall et al. (2019) Weighted SEL _{ss}	PTS (non-impulsive)				TTS (non-impulsive)			
	LF 199 dB	HF 198 dB	VHF 173 dB	PCW 201 dB	LF 179 dB	HF 178 dB	VHF 153 dB	PCW 181 dB
Low order (0.25 kg)	< 50 m	< 50 m	< 50 m	< 50 m	460 m	< 50 m	110 m	80 m
25 kg + donor	130 m	< 50 m	< 50 m	< 50 m	4.4 km	< 50 m	730 m	790 m
55 kg + donor	190 m	< 50 m	< 50 m	< 50 m	6.4 km	60 m	940 m	1.1 km
120 kg + donor	280 m	< 50 m	70 m	< 50 m	9.4 km	80 m	1.1 km	1.6 km
240 kg + donor	390 m	< 50 m	100 m	70 m	13 km	110 m	1.4 km	2.3 km
525 kg + donor	570 m	< 50 m	130 m	100 m	18 km	160 m	1.7 km	3.3 km

Table 5-13 Summary of the impact ranges for UXO detonation using the unweighted SPL_{peak} explosion noise criteria from Popper et al. (2014) for species of fish.

Popper et al. (2014) Unweighted SPL _{RMS}	Mortality and potential mortal injury	
	234 dB	229 dB
Low order (0.25 kg)	40 m	65 m
25 kg + donor	170 m	290 m
55 kg + donor	230 m	380 m
120 kg + donor	300 m	490 m
240 kg + donor	370 m	620 m
525 kg + donor	490 m	810 m

5.3.4 Summary

Should UXO be identified across the offshore development area, the maximum PTS range calculated for UXO is 12 km for the VHF cetacean category, when considering the unweighted SPL_{peak} criteria for the largest high-order clearance. For SEL_{ss} criteria, the largest PTS range is calculated for LF cetaceans with a predicted impact of 9.5 km using the impulsive noise criteria. As explained earlier, this assumes no degradation of the UXO and no smoothing of the pulse over that distance, which is very precautionary. Although an assumption of non-pulse could under-estimate the potential impact (Martin et al., 2020) (the equivalent range based on LF cetacean non-pulse criteria is 570 m), it is likely that the long-range smoothing of the pulse peak would reduce its potential harm and the maximum 'impulsive' range for all species is very precautionary.

6 Summary and conclusions

Subacoustech Environmental have undertaken a study on behalf of the Developer to assess the potential underwater noise and its effects during the construction and operation of the proposed development.

The level of underwater noise from the installation of WTG foundations during construction has been estimated using the semi-empirical underwater noise model INSPIRE. The modelling considers a wide variety of input parameters including bathymetry, hammer blow energy, strike rate, and receptor fleeing speed.

Four representative modelling locations were chosen to give spatial variations across the site as well as accounting for changes in water depth. At each location two modelling scenarios were considered:

- Project Option 1 and 2: A monopile foundation considering a 12.5 m diameter pile installed using a maximum hammer energy of 5,500 kJ; and
- Project Option 2 only: a multi-leg pile foundation considering a 6 m diameter pile installed using a maximum blow energy of 3,000 kJ with up to two piles installed per day.

The loudest levels of noise and the greatest impact ranges were generally predicted for the monopile foundation scenarios at the NE and SE modelling locations, surrounded by the deepest water.

The modelling results were analysed in terms of relevant noise metrics and criteria to assess the effects of the impact piling on marine mammals (Southall *et al.*, 2019; NOAA, 2005) and fish (Popper *et al.*, 2014), which have been used to aid biological assessments.

For marine mammals, maximum ranges were predicted for LF cetaceans and VHF cetaceans, with PTS ranges expected out to 26 km and 15 km respectively. For fish, the largest recoverable injury ranges (203 dB SEL_{cum}) were predicted to be 11 km for a stationary receptor, reducing to less than 100 m when considering a fleeing receptor.

Noise sources other than piling were considered using a high-level, simple modelling approach, including cable laying, dredging, drilling, rock placement, trenching vessel movements, and operational WTG noise. The predicted noise levels for the other construction noise sources and during WTG operation are well below those predicted for impact piling noise. The risk of any potentially injurious effects to fish or marine mammals from these sources are expected to be minimal as the noise emissions from these are close to, or below, the appropriate injury criteria even when very close to the source of the noise.

UXO clearance has also been considered at the site, and for the expected UXO clearance noise, there is a risk of PTS up to 12 km from the largest, 525 kg, UXO device considered, using the unweighted SPL_{peak} criteria for VHF cetaceans. However, this is likely to be highly precautionary as the impact range is based on a worst-case criterion and calculation methodology that does not account for any smoothing of the pulse over long ranges, which would reduce the pulse peak and other characteristics of the sound that cause injury.

The outputs of this modelling have been used to inform analysis of the impacts of underwater noise on marine mammals and fish in their respective reports.

References

1. Andersson M H, Andersson S, Ahlsén J, Andersson B L, Hammar J, Persson L K G, Pihl J, Sigray P, Wikström A. (2016). *A framework for regulating underwater noise during pile driving*. A technical Vindval report, ISBN 978-91-620-6775-5, Swedish Environmental Protection Agency, Stockholm, Sweden.
2. Arons A B (1954). *Underwater explosion shock wave parameters at large distances from the charge*. J. Acoust. Soc. Am. 26, 343-346.
3. Bailey H, Senior B, Simmons D, Rusin J, Picken G, Thompson P M (2010). *Assessing underwater noise levels during pile-driving at an offshore wind farm and its potential effects on marine mammals*. Marine Pollution Bulletin 60 (2010), pp 888-897.
4. Bailey H, Brookes K L, Thompson P M (2014). *Assessing impacts of offshore wind farms: lessons learned and recommendations for the future*. Aquatic Biosystems 2014, 10:8.
5. Bebb A H, Wright H C (1953). *Injury to animals from underwater explosions*. Medical Research Council, Royal Navy Physiological Report 53/732, Underwater Blast Report 31, January 1953.
6. Bebb A H, Wright H C (1954a). *Lethal conditions from underwater explosion blast*. RNP Report 51/654, RNP 3/51, National Archives Reference ADM 298/109, March 1954.
7. Bebb A H, Wright H C (1954b). *Protection from underwater explosion blast. III: Animal experiments and physical measurements*. RNP Report 57/792, RNPL 2/54, March 1954.
8. Bebb A H, Wright H C (1955). *Underwater explosion blast data from the Royal Navy Physiological Labs 1950/1955*. Medical Research Council, April 1955.
9. Blix A S, Folkow L P (1995). *Daily energy expenditure in free living minke whales*. Acta Physio. Scand., 153: 61-66.
10. Cheong S-H, Wang L., Lepper P, Robinson S (2020). *Characterization of Acoustic Fields Generated by UXO Removal, Phase 2*. NPL Report AC 19, National Physical Laboratory.
11. Cudahy A E, Parvin S (2001). *The effects of underwater blast on divers*. Report 1218, Naval Submarine Medical Research Laboratory: #63706N M0099.001-5901.
12. Dahl P H, de Jong C A, Popper A N (2015). *The underwater sound field from impact pile driving and its potential effects on marine life*. Acoustics Today, Spring 2015, Volume 11, Issue 2.
13. Goertner J F (1978). *Dynamical model for explosion injury to fish*. Naval Surface Weapons Center, White Oak Lab, Silver Spring, MD. Report No. NSWC/WOL.TR-76-155.
14. Goertner J F, Wiley M L, Young G A, McDonald W W (1994). *Effects of underwater explosions on fish without swim bladders*. Naval Surface Warfare Center. Report No. NSWC/TR-76-155.
15. Halvorsen M B, Casper B C, Matthew D, Carlson T J, Popper A N (2012). *Effects of exposure to pile driving sounds on the lake sturgeon, Nila tilapia, and hogchoker*. Proc. Roy. Soc. B 279: 4705-4714.
16. Hastie G, Merchant N D, Götz T, Russell D J F, Thompson P, Janik V M (2019). *Effects of impulsive noise on marine mammals: Investigating range-dependent risk*. DOI: 10.1002/eap.1906.
17. Hastings M C and Popper A N (2005). *Effects of sound on fish*. Report to the California Department of Transport, under Contract No. 43A01392005, January 2005.

18. Hawkins A D, Roberts L, Cheesman S (2014). *Responses of free-living coastal pelagic fish to impulsive sounds*. J. Acoust. Soc. Am. 135: 3101-3116.
19. Heaney K D, Ainslie M A, Halvorsen M B, Seger K D, Müller, R A J, Nijhof M J J, Lippert T (2020). *A Parametric Analysis and Sensitivity Study of the Acoustic Propagation for Renewable Energy Sources*. Sterling (VA): U.S. Department of the Interior, Bureau of Ocean Energy Management. Prepared by CSA Ocean Sciences Inc. OCS Study BOEM 2020-011, 165 p.
20. Hirata K (1999). *Swimming speeds of some common fish*. National Maritime Research Institute (Japan). Data sourced from Iwai T, Hisada M (1998). *Fishes – Illustrated book of Gakken* (in Japanese). Accessed on 14th December 2022 at <https://www.nmri.go.jp/archives/eng/khirata/fish/general/speed/speede.htm>
21. Kastelein R A, van de Voorde S, Jennings N (2018). *Swimming speed of a harbor porpoise (Phocoena phocoena) during playbacks of offshore pile driving sounds*. Aquatic Mammals. 2018, 44(1), 92-99, DOI 10.1578/AM.44.1.2018.92.
22. Marine Technical Directorate (MTD) (1996). *Guidelines for the safe use of explosives underwater*. MTD Publication 96/101. ISBN 1 870553 23 3.
23. Martin S B, Lucke K, Barclay D R (2020). *Techniques for distinguishing between impulsive and non-impulsive sound in the context of regulating sound exposure for marine mammals*. The Journal of the Acoustical Society of America 147, 2159.
24. Marine Fisheries Service (NMFS) (2018). *Revisions to: Technical guidance for assessing the effects of anthropogenic sound on marine mammal hearing (version 2.0): Underwater thresholds for onset of permanent and temporary threshold shifts*. U.S. Dept. of Commer., NOAA. NOAA Technical Memorandum NMFS-OPR-59.
25. National Oceanic and Atmospheric Administration (NOAA) (2005). *Endangered fish and wildlife; Notice of intent to prepare an Environmental Impact Statement*. Federal Register 70: 1871-1875.
26. Nedelec S L, Campbell J, Radford A N, Simpson S D, Merchant N D (2016). *Particle motion: The missing link in underwater acoustic ecology*. Methods Ecol. Evol. 7, 836 – 842.
27. Nedwell J R, Langworthy J, Howell D (2003). *Assessment of subsea noise and vibration from offshore wind turbines and its impact on marine wildlife. Initial measurements of underwater noise during construction of offshore wind farms, and comparisons with background noise*. Subacoustech Report No. 544R0423, published by COWRIE, May 2003.
28. Nedwell J R, Parvin S J, Edwards B, Workman R, Brooker A G, Kynoch J E (2007). *Measurement and interpretation of underwater noise during construction and operation of offshore windfarms in UK waters*. Subacoustech Report No. 544R0738 to COWRIE. ISBN: 978-09554276-5-4.
29. Otani S, Naito T, Kato A, Kawamura A (2000). *Diving behaviour and swimming speed of a free-ranging harbour porpoise (Phocoena phocoena)*. Marine Mammal Science, Volume 16, Issue 4, pp 811-814, October 2000.
30. Popper A N, Hawkins A D, Fay R R, Mann D A, Bartol S, Carlson T J, Coombs S, Ellison W T, Gentry R L, Halvorsen M B, Løkkeborg S, Rogers P H, Southall B L, Zeddies D G, Tavolga W N (2014). *Sound exposure guidelines for Fishes and Sea Turtles*. Springer Briefs in Oceanography, DOI 10.1007/978-3-319-06659-2.
31. Popper A N, Hawkins A D (2018). *The importance of particle motion to fishes and invertebrates*. J. Acoust. Soc. Am. 143, 470 – 486.

32. Popper A N, Hawkins A D (2019). *An overview in fish bioacoustics and the impacts of anthropogenic sounds on fishes*. Journal of Fish Biology, 1-22. DOI: 10.1111/jfp.13948.
33. Radford C A, Montgomery J C, Caiger P, Higgs D M (2012). *Pressure and particle motion detection thresholds in fish: a re-examination of salient auditory cues in teleosts*. Journal of Experimental Biology, 215, 3429 – 3435.
34. Rawlins J S P (1987). *Problems in predicting safe ranges from underwater explosions*. Journal of Naval Science, Volume 13, No. 4, pp 235-246.
35. Roberts L, Elliott M (2017) *Good or bad vibrations? Impacts of anthropogenic vibration on the marine epibenthos*. Science of the Total Environment 595 (2017) 255–268.
36. Robinson S P, Lepper P A, Hazelwood R A (2014). *Good practice guide for underwater noise measurement*. National Measurement Office, Marine Scotland, The Crown Estate. NPL Good Practice Guide No. 133, ISSN 1368-6550.
37. Soloway A G, Dahl P H (2014). *Peak sound pressure and sound exposure level from underwater explosions in shallow water*. The Journal of the Acoustical Society of America, 136(3), EL219 – EL223. <http://dx.doi.org/10.1121/1.4892668>.
38. Southall B L, Bowles A E, Ellison W T, Finneran J J, Gentry R L, Green Jr. C R, Kastak D, Ketten D R, Miller J H, Nachtigall P E, Richardson W J, Thomas J A, Tyack P L (2007). *Marine mammal noise exposure criteria: Initial scientific recommendations*. Aquatic Mammals, 33 (4), pp 411-509.
39. Southall B L, Finneran J J, Reichmuth C, Nachtigall P E, Ketten D R, Bowles A E, Ellison W T, Nowacek D P, Tyack P L (2019). *Marine mammal noise exposure criteria: Updated scientific recommendations for residual hearing effects*. Aquatic Mammals 2019, 45 (20, 125-232) DOI 10.1578/AM.45.2.2019.125.
40. Southall B L (2021). *Evolutions in Marine Mammal Noise Exposure Criteria*. Acoustics Today 17(2) <https://doi.org/10.1121/AT.2021.17.2.52>.
41. Stephenson J R, Gingerich A J, Brown R S, Pflugrath B D, Deng Z, Carlson T J, Langeslay M J, Ahmann M L, Johnson R L, Seaburg A G (2010). *Assessing barotrauma in neutrally and negatively buoyant juvenile salmonids exposed to simulated hydro-turbine passage using a mobile aquatic barotrauma laboratory*. Fisheries Research Volume 106, Issue 3, pp 271-278, December 2010.
42. Stöber U, Thomsen F (2021). *How could operational underwater sound from future offshore wind turbines impact marine life*. The Journal of the Acoustical Society of America, 149, 1791-1795. <https://doi.org/10.1121/10.0003760>.
43. Thompson P M, Hastie G D, Nedwell J, Barham R, Brookes K L, Cordes L S, Bailey H, McLean N (2013). *Framework for assessing impacts of pile-driving noise from offshore wind farm construction on a harbour seal population*. Environmental Impact Assessment Review 43 (2013) 73-85.
44. Tougaard J, Hermannsen L, Madsen P T (2020), *How loud is the underwater noise from operating offshore wind turbines?* J. Acoust. Soc. Am. 148 (5). doi.org/10.1121/10.0002453.
45. von Benda-Beckmann A M, Aarts G, Sertlek H Ö, Lucke K, Verboom W C, Kastelein R A, Ketten D R, van Bemmelen R, Lamm F-P A, Kirkwood R J, Ainslie M A (2015). *Assessing the impact of underwater clearance of unexploded ordnance on harbour porpoises (Phocoena phocoena) in the southern North Sea*. Aquatic Mammals 2015, 41(4), pp 503-523, DOI 10.1578/AM.41.4.2015.503.

Appendix A Additional modelling results

Following the impulsive Southall *et al.* (2019) modelled impact piling ranges presented in section 4 of the main report, the modelling results for non-impulsive criteria from impact piling noise at the proposed development are presented below. The predicted ranges here fall well below the impulsive criteria presented in the main report.

Table A 1 Summary of the weighted SEL_{cum} impact ranges for marine mammals using the Southall *et al.* (2019) non-impulsive criteria for the monopile foundation modelling at the NE location assuming a fleeing animal.

Southall <i>et al.</i> (2019) Weighted SEL_{cum}		NE location, monopile foundation			
		Area	Maximum range	Minimum range	Mean range
PTS (Non-impulsive)	LF (199 dB)	< 0.1 km ²	< 100 m	< 100 m	< 100 m
	HF (198 dB)	< 0.1 km ²	< 100 m	< 100 m	< 100 m
	VHF (173 dB)	< 0.1 km ²	< 100 m	< 100 m	< 100 m
	PCW (201 dB)	< 0.1 km ²	< 100 m	< 100 m	< 100 m
TTS (Non-impulsive)	LF (179 dB)	2,200 km ²	47 km	5.0 km	22 km
	HF (178 dB)	< 0.1 km ²	< 100 m	< 100 m	< 100 m
	VHF (153 dB)	680 km ²	20 km	7.3 km	14 km
	PCW (181 dB)	51 km ²	5.9 km	1.6 km	3.7 km

Table A 2 Summary of the weighted SEL_{cum} impact ranges for marine mammals using the Southall *et al.* (2019) non-impulsive criteria for the monopile foundation modelling at the NW location assuming a fleeing animal.

Southall <i>et al.</i> (2019) Weighted SEL_{cum}		NW location, monopile foundation			
		Area	Maximum range	Minimum range	Mean range
PTS (Non-impulsive)	LF (199 dB)	< 0.1 km ²	< 100 m	< 100 m	< 100 m
	HF (198 dB)	< 0.1 km ²	< 100 m	< 100 m	< 100 m
	VHF (173 dB)	< 0.1 km ²	< 100 m	< 100 m	< 100 m
	PCW (201 dB)	< 0.1 km ²	< 100 m	< 100 m	< 100 m
TTS (Non-impulsive)	LF (179 dB)	1,200 km ²	35 km	< 100 m	14 km
	HF (178 dB)	< 0.1 km ²	< 100 m	< 100 m	< 100 m
	VHF (153 dB)	310 km ²	16 km	3.4 km	9.0 km
	PCW (181 dB)	7.5 km ²	2.8 km	< 100 m	1.1 km

Table A 3 Summary of the weighted SEL_{cum} impact ranges for marine mammals using the Southall *et al.* (2019) non-impulsive criteria for the monopile foundation modelling at the SE location assuming a fleeing animal.

Southall <i>et al.</i> (2019) Weighted SEL_{cum}		SE location, monopile foundation			
		Area	Maximum range	Minimum range	Mean range
PTS (Non-impulsive)	LF (199 dB)	< 0.1 km ²	< 100 m	< 100 m	< 100 m
	HF (198 dB)	< 0.1 km ²	< 100 m	< 100 m	< 100 m
	VHF (173 dB)	< 0.1 km ²	< 100 m	< 100 m	< 100 m
	PCW (201 dB)	< 0.1 km ²	< 100 m	< 100 m	< 100 m
TTS (Non-impulsive)	LF (179 dB)	2,300 km ²	47 km	< 100 m	23 km
	HF (178 dB)	< 0.1 km ²	< 100 m	< 100 m	< 100 m
	VHF (153 dB)	700 km ²	21 km	2.9 km	14 km
	PCW (181 dB)	59 km ²	6.2 km	100 m	4.0 km

Table A 4 Summary of the weighted SEL_{cum} impact ranges for marine mammals using the Southall et al. (2019) non-impulsive criteria for the monopile foundation modelling at the SW location assuming a fleeing animal.

Southall et al. (2019) Weighted SEL_{cum}		SW location, monopile foundation			
		Area	Maximum range	Minimum range	Mean range
PTS (Non-impulsive)	LF (199 dB)	< 0.1 km ²	< 100 m	< 100 m	< 100 m
	HF (198 dB)	< 0.1 km ²	< 100 m	< 100 m	< 100 m
	VHF (173 dB)	< 0.1 km ²	< 100 m	< 100 m	< 100 m
	PCW (201 dB)	< 0.1 km ²	< 100 m	< 100 m	< 100 m
TTS (Non-impulsive)	LF (179 dB)	1,800 km ²	42 km	< 100 m	18 km
	HF (178 dB)	< 0.1 km ²	< 100 m	< 100 m	< 100 m
	VHF (153 dB)	490 km ²	19 km	< 100 m	11 km
	PCW (181 dB)	29 km ²	4.9 km	< 100 m	2.4 km

Table A 5 Summary of the weighted SEL_{cum} impact ranges for marine mammals using the Southall et al. (2019) non-impulsive criteria for the multi-leg foundation modelling at the NE location assuming a fleeing animal for a single pile.

Southall et al. (2019) Weighted SEL_{cum}		NE location, multi-leg foundation (single pile)			
		Area	Maximum range	Minimum range	Mean range
PTS (Non-impulsive)	LF (199 dB)	< 0.1 km ²	< 100 m	< 100 m	< 100 m
	HF (198 dB)	< 0.1 km ²	< 100 m	< 100 m	< 100 m
	VHF (173 dB)	< 0.1 km ²	< 100 m	< 100 m	< 100 m
	PCW (201 dB)	< 0.1 km ²	< 100 m	< 100 m	< 100 m
TTS (Non-impulsive)	LF (179 dB)	1,200 km ²	32 km	3.4 km	17 km
	HF (178 dB)	< 0.1 km ²	< 100 m	< 100 m	< 100 m
	VHF (153 dB)	260 km ²	12 km	5.7 km	8.8 km
	PCW (181 dB)	4.4 km ²	1.8 km	300 m	1.1 km

Table A 6 Summary of the weighted SEL_{cum} impact ranges for marine mammals using the Southall et al. (2019) non-impulsive criteria for the multi-leg foundation modelling at the NE location assuming a fleeing animal for two sequentially installed piles.

Southall et al. (2019) Weighted SEL_{cum}		NE location, multi-leg foundation (2 sequential piles)			
		Area	Maximum range	Minimum range	Mean range
PTS (Non-impulsive)	LF (199 dB)	< 0.1 km ²	< 100 m	< 100 m	< 100 m
	HF (198 dB)	< 0.1 km ²	< 100 m	< 100 m	< 100 m
	VHF (173 dB)	< 0.1 km ²	< 100 m	< 100 m	< 100 m
	PCW (201 dB)	< 0.1 km ²	< 100 m	< 100 m	< 100 m
TTS (Non-impulsive)	LF (179 dB)	1,400 km ²	36 km	3.4 km	17 km
	HF (178 dB)	< 0.1 km ²	< 100 m	< 100 m	< 100 m
	VHF (153 dB)	340 km ²	14 km	5.7 km	9.9 km
	PCW (181 dB)	14 km ²	3.3 km	300 m	1.8 km

Table A 7 Summary of the weighted SEL_{cum} impact ranges for marine mammals using the Southall et al. (2019) non-impulsive criteria for the multi-leg foundation modelling at the NW location assuming a fleeing animal for a single pile.

Southall et al. (2019) Weighted SEL_{cum}		NW location, multi-leg foundation (single pile)			
		Area	Maximum range	Minimum range	Mean range
PTS (Non-impulsive)	LF (199 dB)	< 0.1 km ²	< 100 m	< 100 m	< 100 m
	HF (198 dB)	< 0.1 km ²	< 100 m	< 100 m	< 100 m
	VHF (173 dB)	< 0.1 km ²	< 100 m	< 100 m	< 100 m
	PCW (201 dB)	< 0.1 km ²	< 100 m	< 100 m	< 100 m
TTS (Non-impulsive)	LF (179 dB)	600 km ²	24 km	< 100 m	9.9 km
	HF (178 dB)	< 0.1 km ²	< 100 m	< 100 m	< 100 m
	VHF (153 dB)	100 km ²	8.3 km	2.2 km	5.3 km
	PCW (181 dB)	< 0.1 km ²	< 100 m	< 100 m	< 100 m

Table A 8 Summary of the weighted SEL_{cum} impact ranges for marine mammals using the Southall et al. (2019) non-impulsive criteria for the multi-leg foundation modelling at the NW location assuming a fleeing animal for two sequentially installed piles.

Southall et al. (2019) Weighted SEL_{cum}		NW location, multi-leg foundation (2 sequential piles)			
		Area	Maximum range	Minimum range	Mean range
PTS (Non-impulsive)	LF (199 dB)	< 0.1 km ²	< 100 m	< 100 m	< 100 m
	HF (198 dB)	< 0.1 km ²	< 100 m	< 100 m	< 100 m
	VHF (173 dB)	< 0.1 km ²	< 100 m	< 100 m	< 100 m
	PCW (201 dB)	< 0.1 km ²	< 100 m	< 100 m	< 100 m
TTS (Non-impulsive)	LF (179 dB)	700 km ²	26 km	< 100 m	11 km
	HF (178 dB)	< 0.1 km ²	< 100 m	< 100 m	< 100 m
	VHF (153 dB)	140 km ²	10 km	2.2 km	6.0 km
	PCW (181 dB)	0.5 km ²	830 m	< 100 m	230 m

Table A 9 Summary of the weighted SEL_{cum} impact ranges for marine mammals using the Southall et al. (2019) non-impulsive criteria for the multi-leg foundation modelling at the SE location assuming a fleeing animal for a single pile.

Southall et al. (2019) Weighted SEL_{cum}		SE location, multi-leg foundation (single pile)			
		Area	Maximum range	Minimum range	Mean range
PTS (Non-impulsive)	LF (199 dB)	< 0.1 km ²	< 100 m	< 100 m	< 100 m
	HF (198 dB)	< 0.1 km ²	< 100 m	< 100 m	< 100 m
	VHF (173 dB)	< 0.1 km ²	< 100 m	< 100 m	< 100 m
	PCW (201 dB)	< 0.1 km ²	< 100 m	< 100 m	< 100 m
TTS (Non-impulsive)	LF (179 dB)	1,300 km ²	33 km	< 100 m	17 km
	HF (178 dB)	< 0.1 km ²	< 100 m	< 100 m	< 100 m
	VHF (153 dB)	270 km ²	12 km	2.2 km	8.9 km
	PCW (181 dB)	6.4 km ²	2.1 km	< 100 m	1.3 km

Table A 10 Summary of the weighted SEL_{cum} impact ranges for marine mammals using the Southall et al. (2019) non-impulsive criteria for the multi-leg foundation modelling at the SE location assuming a fleeing animal for two sequentially installed piles.

Southall et al. (2019) Weighted SEL_{cum}		SE location, multi-leg foundation (2 sequential piles)			
		Area	Maximum range	Minimum range	Mean range
PTS (Non-impulsive)	LF (199 dB)	< 0.1 km ²	< 100 m	< 100 m	< 100 m
	HF (198 dB)	< 0.1 km ²	< 100 m	< 100 m	< 100 m
	VHF (173 dB)	< 0.1 km ²	< 100 m	< 100 m	< 100 m
	PCW (201 dB)	< 0.1 km ²	< 100 m	< 100 m	< 100 m
TTS (Non-impulsive)	LF (179 dB)	1,500 km ²	36 km	< 100 m	18 km
	HF (178 dB)	< 0.1 km ²	< 100 m	< 100 m	< 100 m
	VHF (153 dB)	360 km ²	15 km	2.2 km	10 km
	PCW (181 dB)	18 km ²	3.6 km	< 100 m	2.0 km

Table A 11 Summary of the weighted SEL_{cum} impact ranges for marine mammals using the Southall et al. (2019) non-impulsive criteria for the multi-leg foundation modelling at the SW location assuming a fleeing animal for a single pile.

Southall et al. (2019) Weighted SEL_{cum}		SW location, multi-leg foundation (single pile)			
		Area	Maximum range	Minimum range	Mean range
PTS (Non-impulsive)	LF (199 dB)	< 0.1 km ²	< 100 m	< 100 m	< 100 m
	HF (198 dB)	< 0.1 km ²	< 100 m	< 100 m	< 100 m
	VHF (173 dB)	< 0.1 km ²	< 100 m	< 100 m	< 100 m
	PCW (201 dB)	< 0.1 km ²	< 100 m	< 100 m	< 100 m
TTS (Non-impulsive)	LF (179 dB)	970 km ²	29 km	< 100 m	13 km
	HF (178 dB)	< 0.1 km ²	< 100 m	< 100 m	< 100 m
	VHF (153 dB)	170 km ²	11 km	< 100 m	6.8 km
	PCW (181 dB)	1.6 km ²	1.3 km	< 100 m	510 m

Table A 12 Summary of the weighted SEL_{cum} impact ranges for marine mammals using the Southall et al. (2019) non-impulsive criteria for the multi-leg foundation modelling at the SW location assuming a fleeing animal for two sequentially installed piles.

Southall et al. (2019) Weighted SEL_{cum}		SW location, multi-leg foundation (2 sequential piles)			
		Area	Maximum range	Minimum range	Mean range
PTS (Non-impulsive)	LF (199 dB)	< 0.1 km ²	< 100 m	< 100 m	< 100 m
	HF (198 dB)	< 0.1 km ²	< 100 m	< 100 m	< 100 m
	VHF (173 dB)	< 0.1 km ²	< 100 m	< 100 m	< 100 m
	PCW (201 dB)	< 0.1 km ²	< 100 m	< 100 m	< 100 m
TTS (Non-impulsive)	LF (179 dB)	1,100 km ²	32 km	< 100 m	14 km
	HF (178 dB)	< 0.1 km ²	< 100 m	< 100 m	< 100 m
	VHF (153 dB)	240 km ²	13 km	< 100 m	7.8 km
	PCW (181 dB)	3.3 km ²	1.8 km	< 100 m	720 m

Report documentation page

- This is a controlled document.
- Additional copies should be obtained through the Subacoustech Environmental librarian.
- If copied locally, each document must be marked “Uncontrolled copy”.
- Amendment shall be by whole document replacement.
- Proposals for change to this document should be forwarded to Subacoustech Environmental.

Document No.	Draft	Date	Details of change
P291R2000	01	24/04/2023	Initial writing and internal review
P291R0201	-	12/05/2023	Update following new parameters
P291R0202	-	19/01/2024	Further updates following client review
P291R0203	-	14/02/2024	Issue to client
P291R0204	-	08/05/2024	Minor clarifications

Originator's current report number	P291R0204
Originator's name and location	R Barham; Subacoustech Environmental Ltd.
Contract number and period covered	P291; April 2023 – May 2024
Sponsor's name and location	C Collier; GoBe Consultants
Report classification and caveats in use	COMMERCIAL IN CONFIDENCE
Date written	April – May 2023, January, May 2024
Pagination	Cover + iv + 54
References	45
Report title	North Irish Sea Array: Underwater noise assessment
Translation/Conference details (if translation, give foreign title/if part of a conference, give conference particulars)	
Title classification	Unclassified
Author(s)	R Barham, T Mason
Descriptors/keywords	
Abstract	
Abstract classification	Unclassified; Unlimited distribution