

Array Area

Offshore Export Cable Corridor

WTG Layout (Project Option 2)

Study Area

Tidal Excursion Buffer

Low Water Mark

High Water Mark

EEZ Boundary

National EEZ (12nm)

Proposed Oriel OWF

Disposal At Sea Sites (Active)

Bathing Water Locations

Special Areas of Conservation

Deposition (mm)

<1

1 - 2

2 - 5

5 - 10

10 - 20

20 - 50

50 - 100

Bathymetry (m)

0

200

NISA

North Irish Sea Array

ARUP

GoBe

Project

North Irish Sea Array Offshore Wind Farm

Figure Title

Foundation Drilling Deposition

Job No: 281240

Date: May 2024

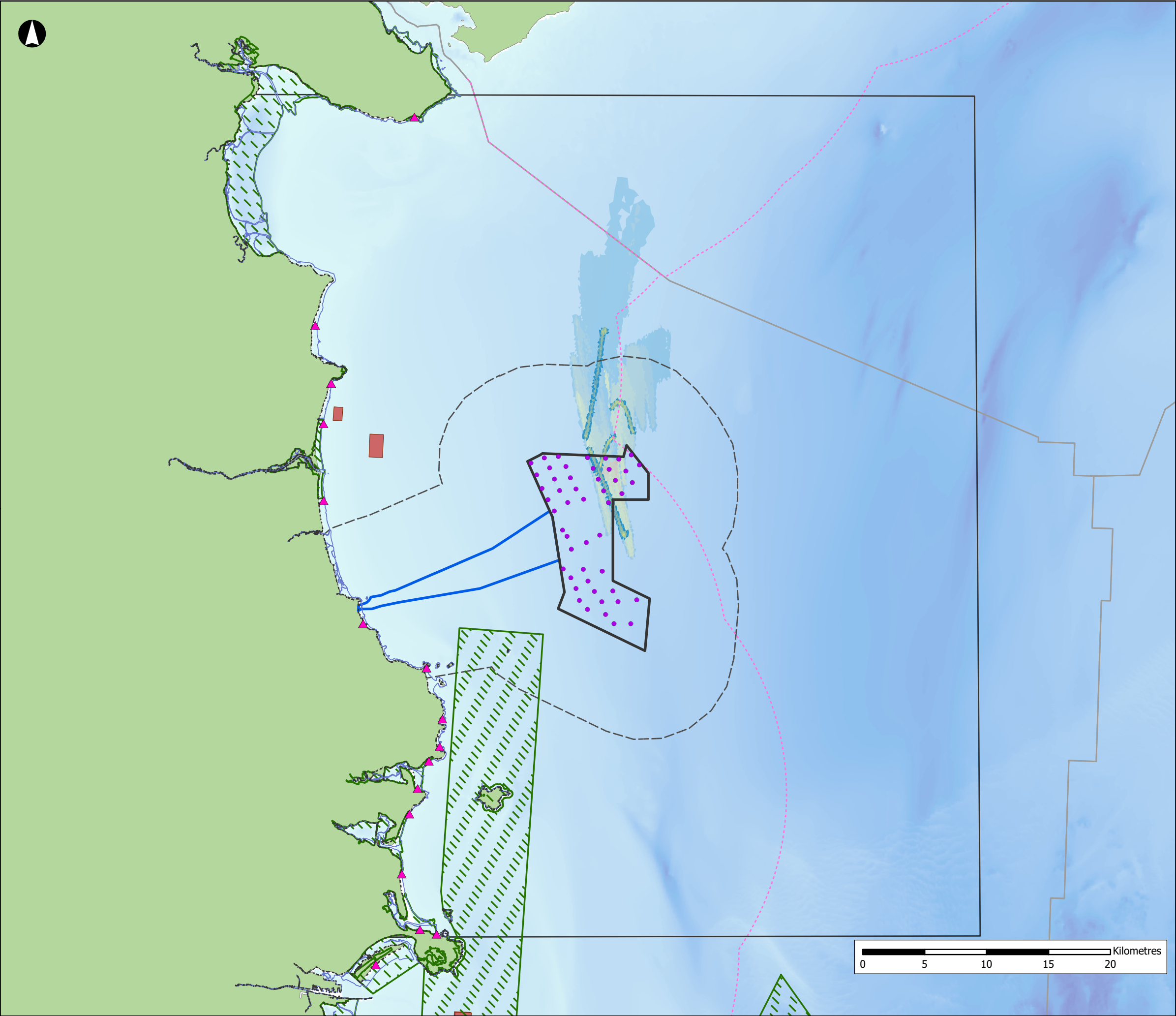
Scale: 1:300,000 @A3

Status: Issue

Datum: WGS84 Projection: UTM30N

Figure No:

10.14



Array Area

Offshore Export Cable Corridor

WTG Layout (Project Option 2)

Study Area

Tidal Excursion Buffer

Low Water Mark

High Water Mark

EEZ Boundary

National EEZ (12nm)

Disposal At Sea Sites (Active)

Bathing Water Locations

Special Areas of Conservation

Suspended Sediment (mg/l)

<1 (trace level)

1 - 2 (normal variation)

2 - 5 (background level)

5 - 10 (background level)

10 - 20 (background level)

20 - 50 (4 * background)

50 - 100 (10 * background)

100 - 200 (20 * background)

200 - 500 (40 * background)

500 - 1000 (100 * background)

>1000 (200 * background)

Bathymetry (m)

0

200

NISA

North Irish Sea Array

ARUP

GoBe

Project

North Irish Sea Array

Offshore Wind Farm

Figure Title

Array Cabling Sediment Plumes

Job No: 281240

Date: May 2024

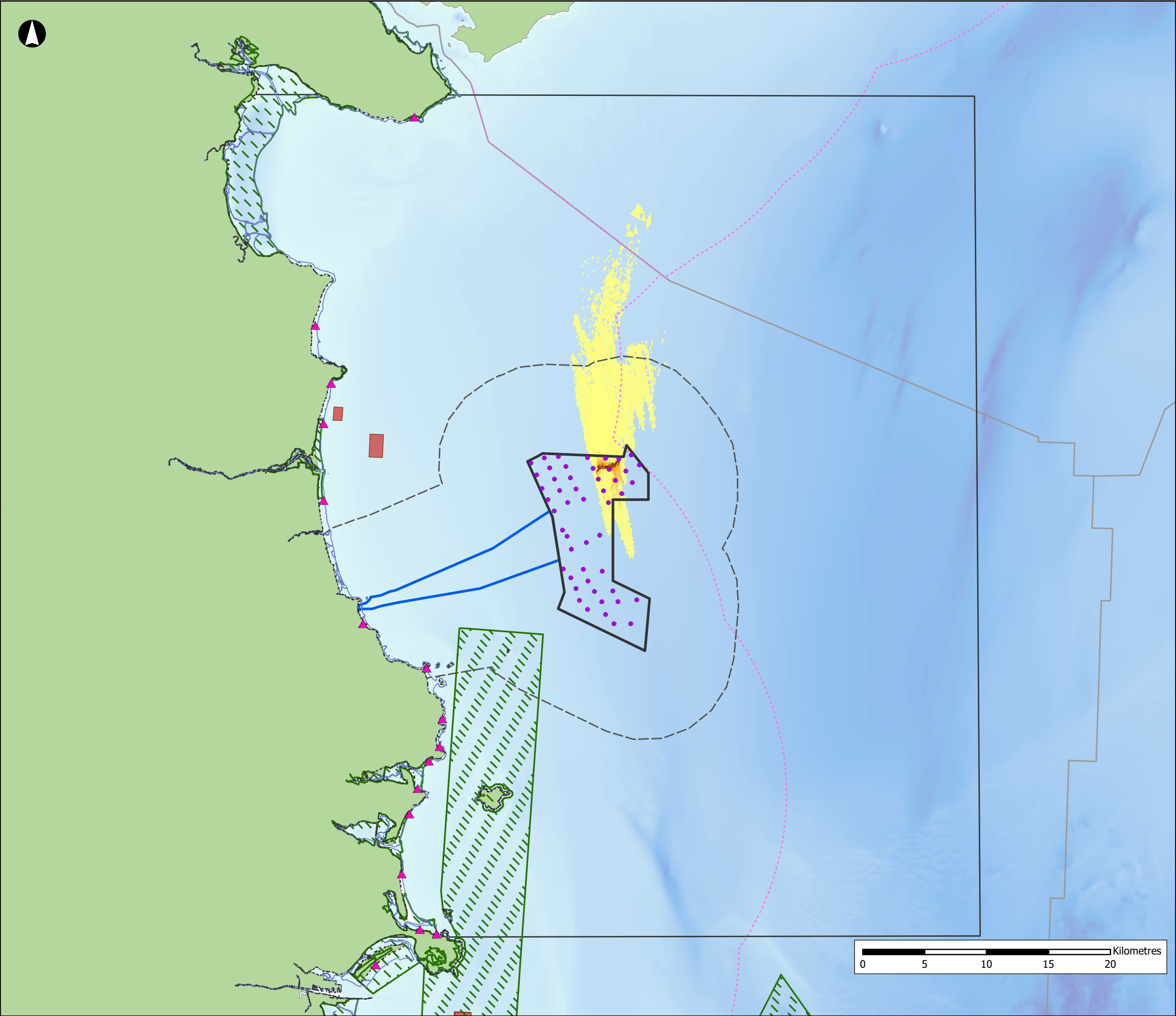
Scale: 1:300,000 @A3

Status: Issue

Datum: WGS84 Projection: UTM30N

Figure No:

10.15



Array Area

Offshore Export Cable Corridor

WTG Layout (Project Option 2)

Study Area

Tidal Excursion Buffer

Low Water Mark

High Water Mark

EEZ Boundary

National EEZ (12nm)

Disposal At Sea Sites (Active)

Bathing Water Locations

Special Areas of Conservation

Deposition (mm)

<1

1 - 2

2 - 5

5 - 10

10 - 20

20 - 50

50 - 100

Bathymetry (m)

0

200

NISA

North Irish Sea Array

ARUP

GoBe

Project

North Irish Sea Array Offshore Wind Farm

Figure Title

Array Cabling Sediment Deposition

Job No: 281240

Date: May 2024

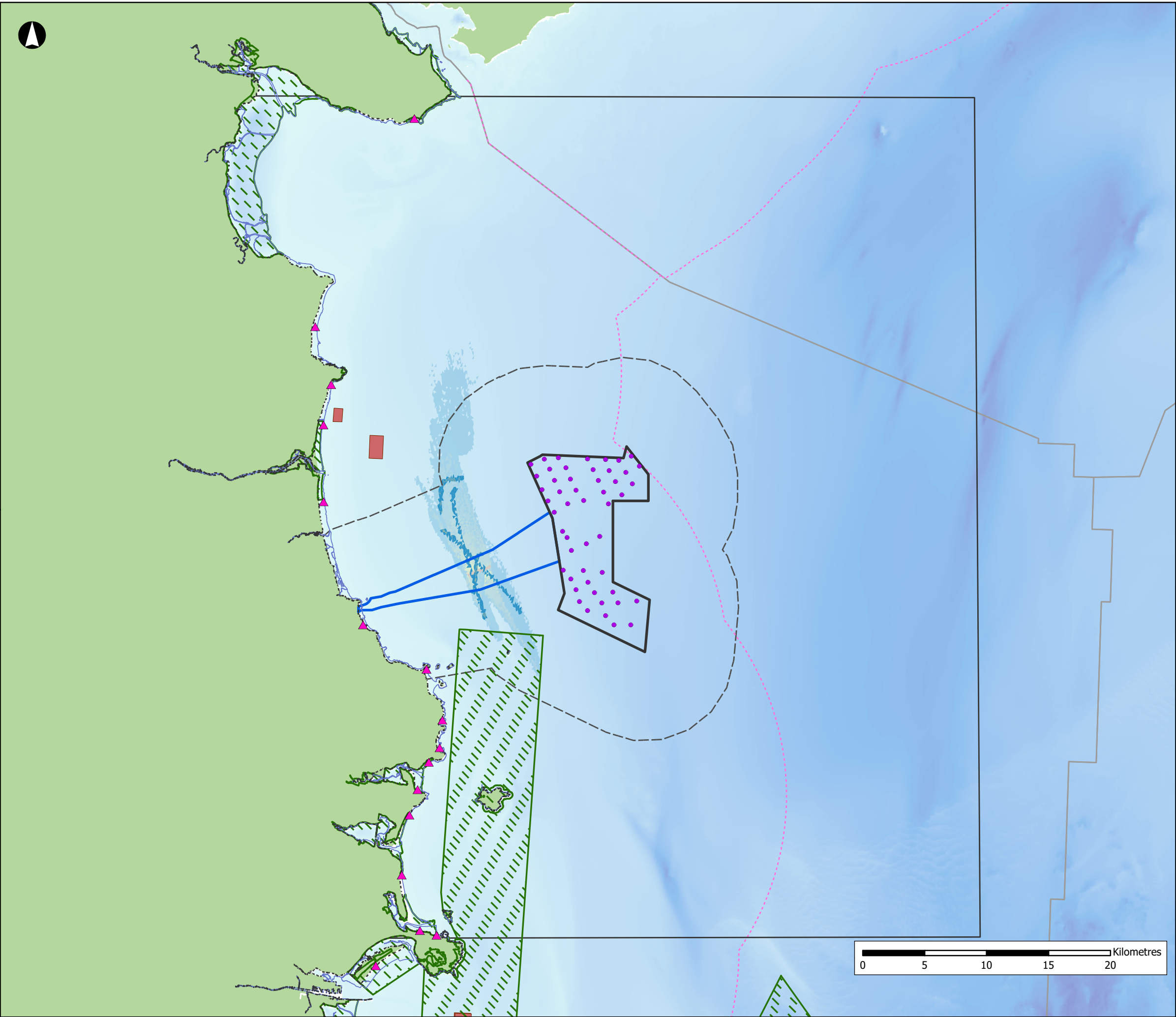
Scale: 1:300,000 @A3

Status: Issue

Datum: WGS84 Projection: UTM30N

Figure No:

10.16



Array Area

Offshore Export Cable Corridor

WTG Layout

Study Area

Tidal Excursion Buffer

Low Water Mark

High Water Mark

EEZ Boundary

National EEZ (12nm)

Disposal At Sea Sites (Active)

Bathing Water Locations

Special Areas of Conservation

Suspended Sediment (mg/l)

<1 (trace level)

1 - 2 (normal variation)

2 - 5 (background level)

5 - 10 (background level)

10 - 20 (background level)

20 - 50 (4 * background)

50 - 100 (10 * background)

100 - 200 (20 * background)

200 - 500 (40 * background)

500 - 1000 (100 * background)

>1000 (200 * background)

Bathymetry (m)

0

200

NISA

North Irish Sea Array

ARUP

GoBe

Project

North Irish Sea Array

Offshore Wind Farm

Figure Title

ECC Cabling Sediment Plumes

Job No: 281240

Date: May 2024

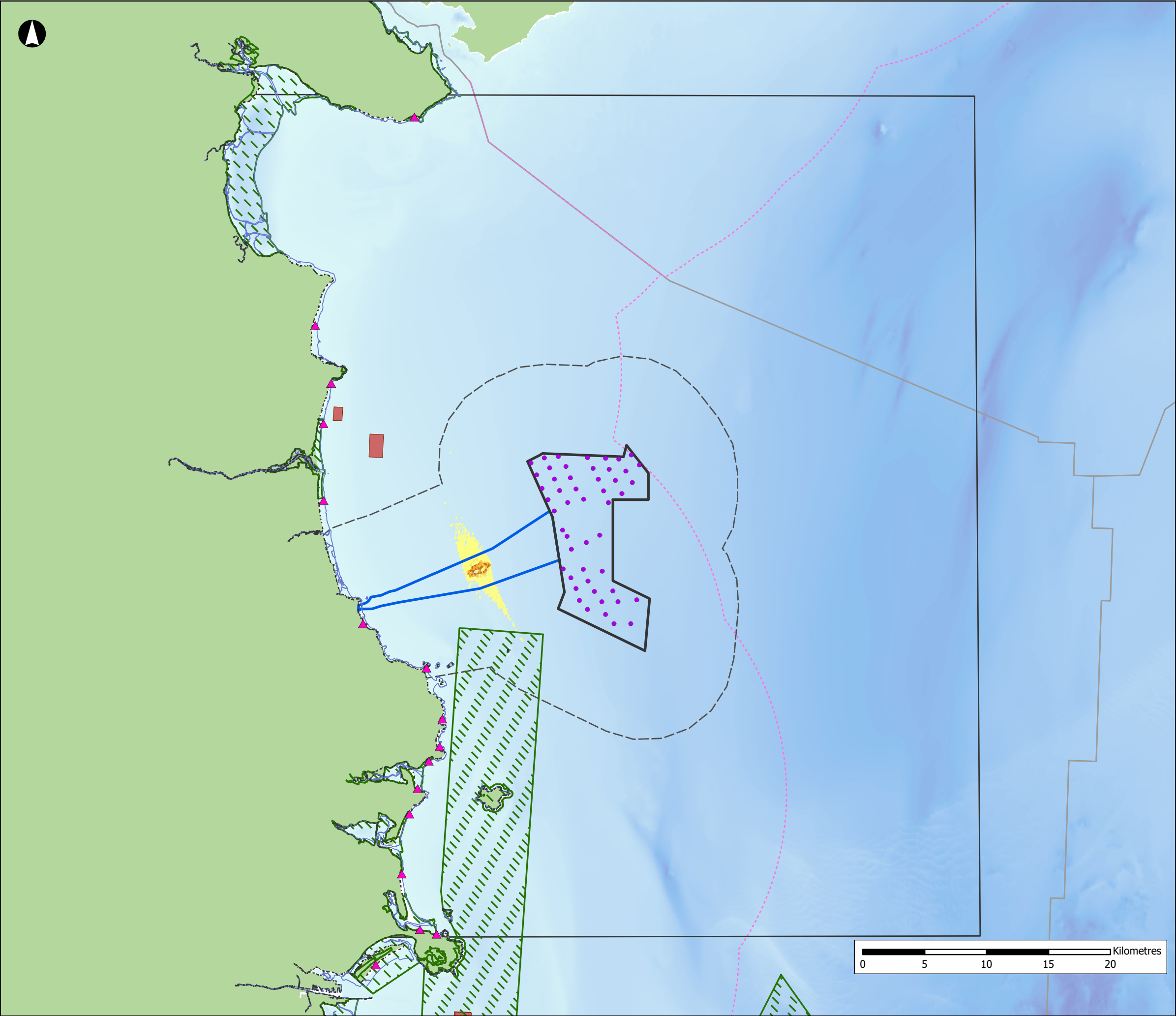
Scale: 1:300,000 @A3

Status: Issue

Datum: WGS84 Projection: UTM30N

Figure No:

10.17



Array Area

Offshore Export Cable Corridor

WTG Layout (Project Option 2)

Study Area

Tidal Excursion Buffer

Low Water Mark

High Water Mark

EEZ Boundary

National EEZ (12nm)

Disposal At Sea Sites (Active)

Bathing Water Locations

Special Areas of Conservation

Deposition (mm)

<1

1 - 2

2 - 5

5 - 10

10 - 20

20 - 50

50 - 100

Bathymetry (m)

0

200

NISA

North Irish Sea Array

ARUP

GoBe

Project

North Irish Sea Array

Offshore Wind Farm

Figure Title

ECC Cabling Sediment

Deposition

Job No: 281240

Date: May 2024

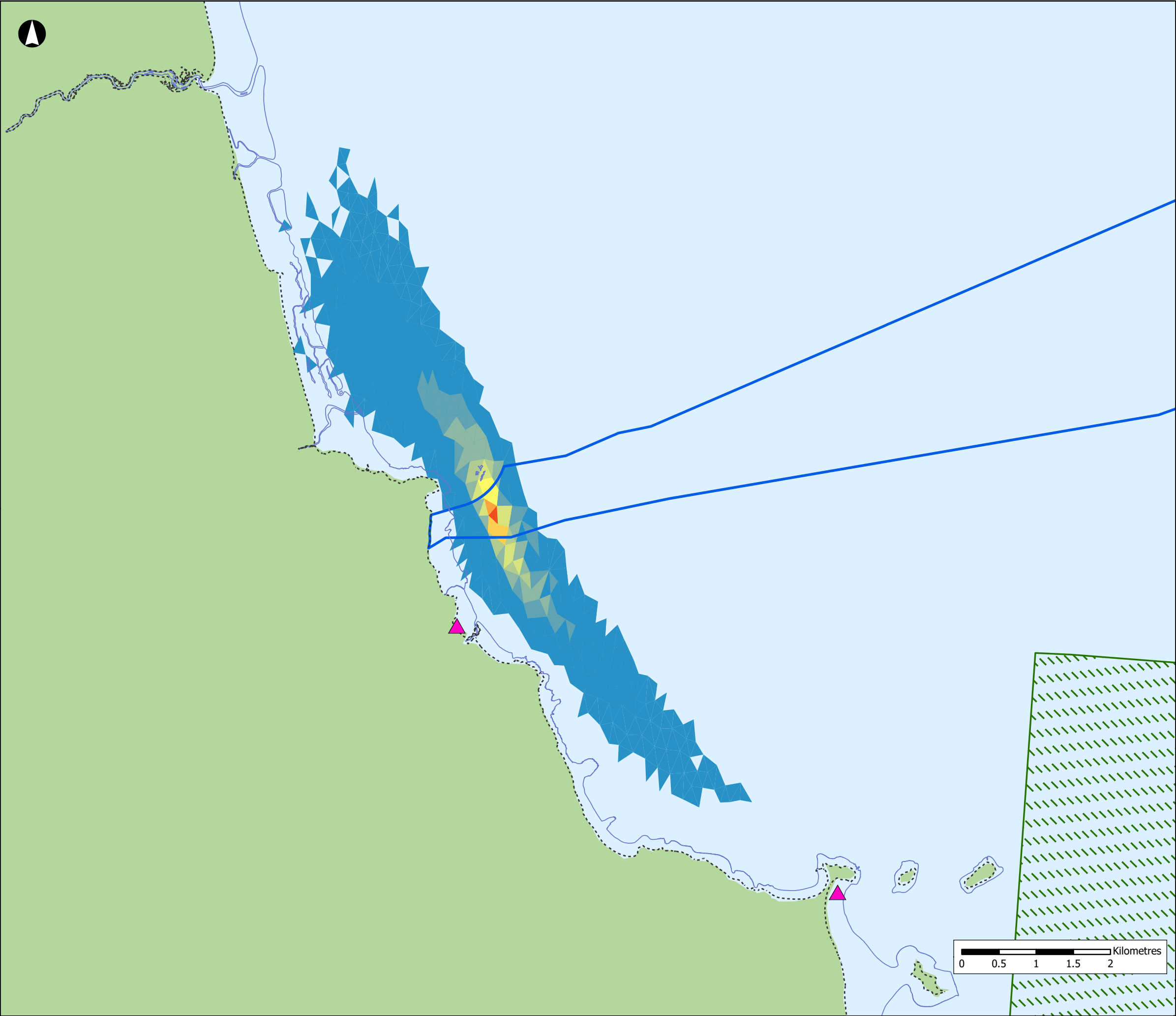
Scale: 1:300,000 @A3

Status: Issue

Datum: WGS84 Projection: UTM30N

Figure No:

10.18



Offshore Export Cable Corridor

Low Water Mark

High Water Mark

Bathing Water Locations

Special Areas of Conservation

Suspended Sediment (mg/l)

<1 (trace level)

1 - 2 (normal variation)

2 - 5 (background level)

5 - 10 (background level)

10 - 20 (background level)

20 - 50 (4 * background)

50 - 100 (10 * background)

100 - 200 (20 * background)

200 - 500 (40 * background)

500 - 1000 (100 * background)

>1000 (200 * background)

NISA

North Irish Sea Array

ARUP

GoBe

Project

**North Irish Sea Array
Offshore Wind Farm**

Figure Title

HDD Exit Pits Sediment Plumes

Job No: 281240

Date: May 2024

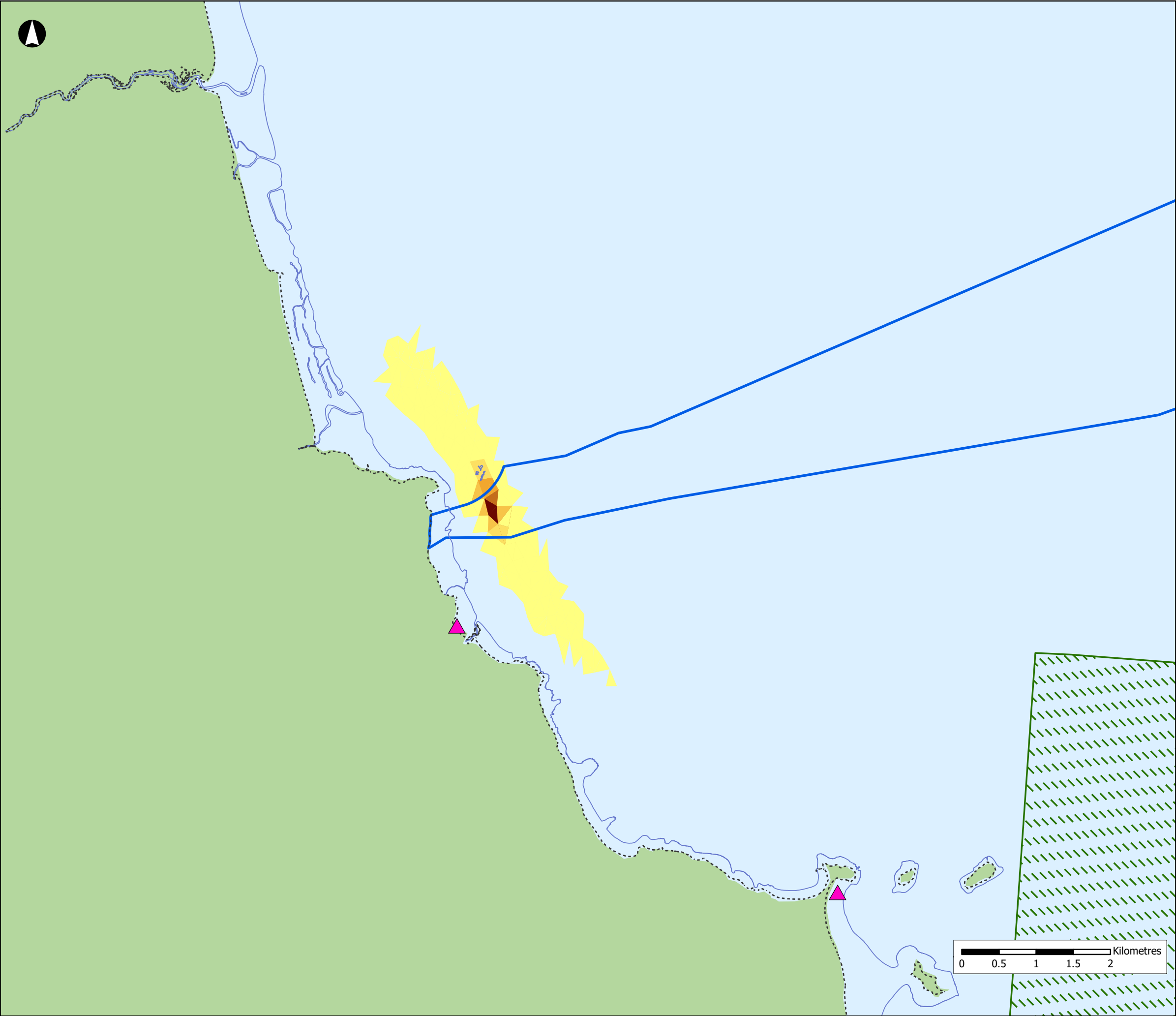
Scale: 1:50,000 @A3

Status: Issue

Datum: WGS84 Projection: UTM30N

Figure No:

10.19



Offshore Export Cable Corridor

Low Water Mark

High Water Mark

Bathing Water Locations

Special Areas of Conservation

Deposition (mm)

<1

1 - 2

2 - 5

5 - 10

10 - 20

20 - 50

50 - 100

NISA

North Irish Sea Array

ARUP

GoBe

Project

North Irish Sea Array Offshore Wind Farm

Figure Title

HDD Exit Pits Sediment Deposition

Job No: 281240

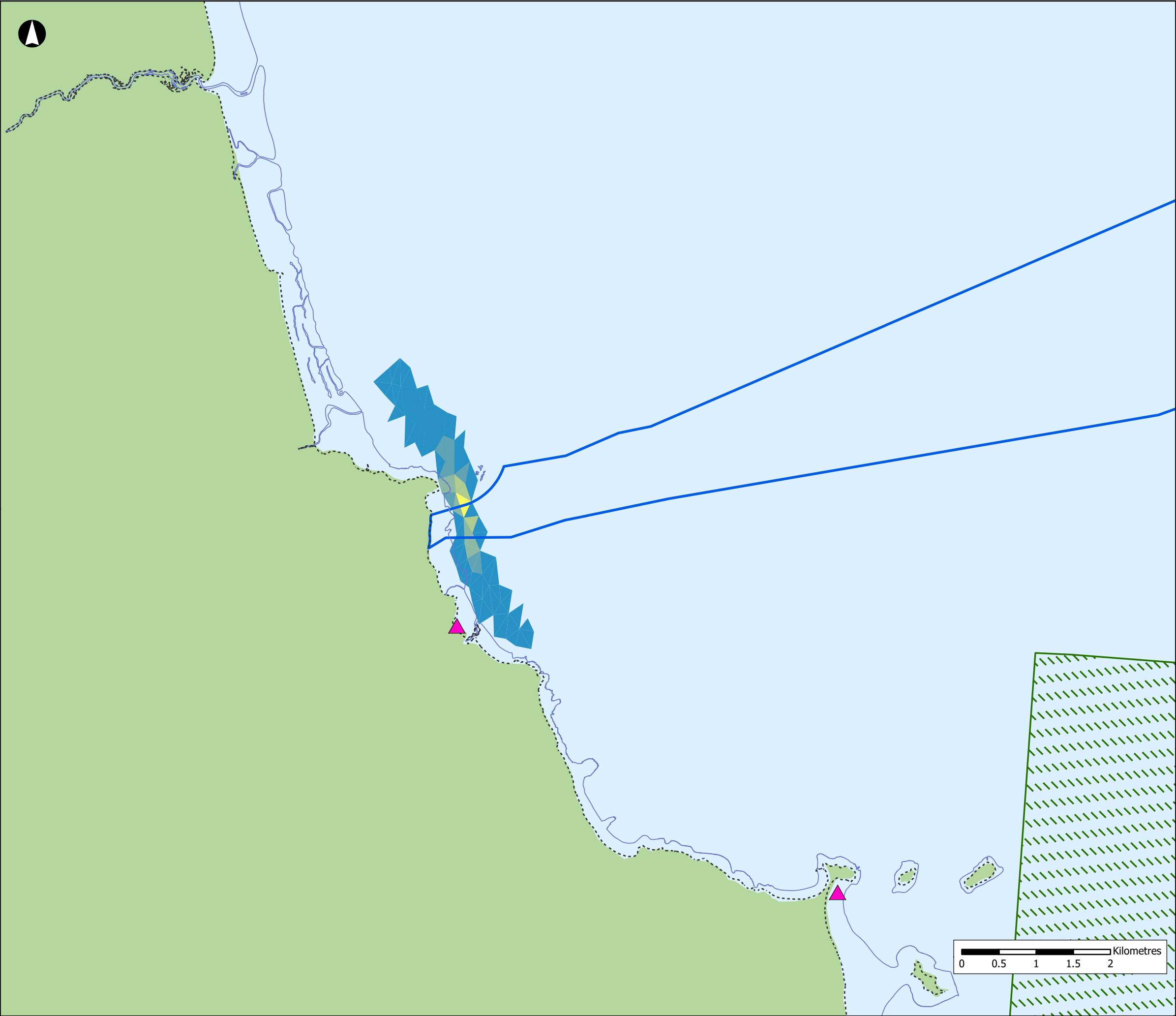
Date: May 2024

Scale: 1:50,000 @A3

Status: Issue

Datum: WGS84 Projection: UTM30N

Figure No: 10.20



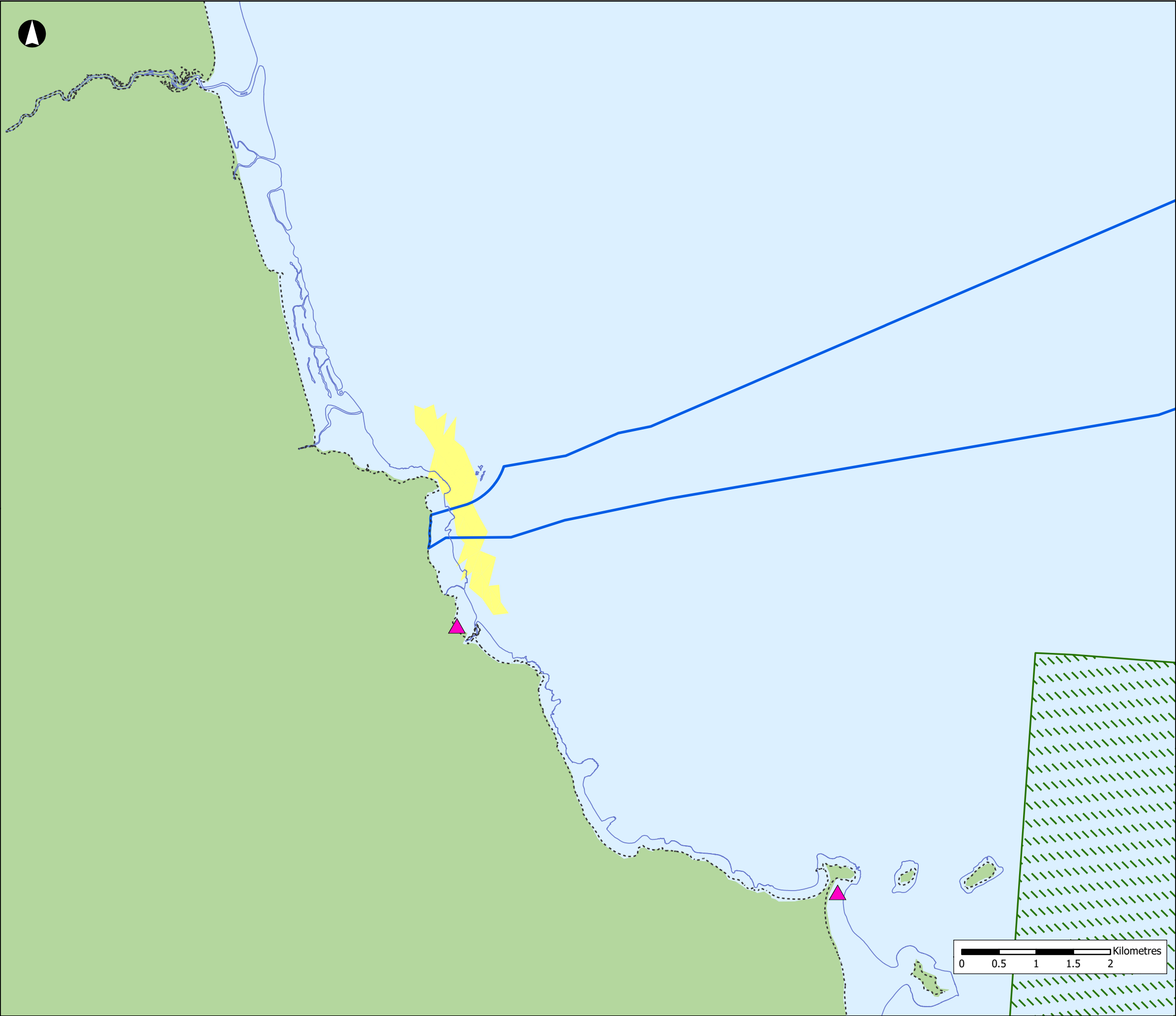
NISA
North Irish Sea Array

ARUP **GoBe**

Project
North Irish Sea Array
Offshore Wind Farm

Figure Title
Bentonite Plumes

Job No: 281240	Datum: WGS84 Projection: UTM30N
Date: May 2024	Figure No: 10.21
Scale: 1:50,000 @A3	
Status: Issue	



Offshore Export Cable Corridor

Low Water Mark

High Water Mark

Bathing Water Locations

Special Areas of Conservation

Bentonite Deposition (mm)

<1

1 - 2

2 - 5

5 - 10

10 - 20

20 - 50

50 - 100

NISA

North Irish Sea Array

ARUP

GoBe

Project

North Irish Sea Array Offshore Wind Farm

Figure Title

Bentonite Deposition

Job No: 281240

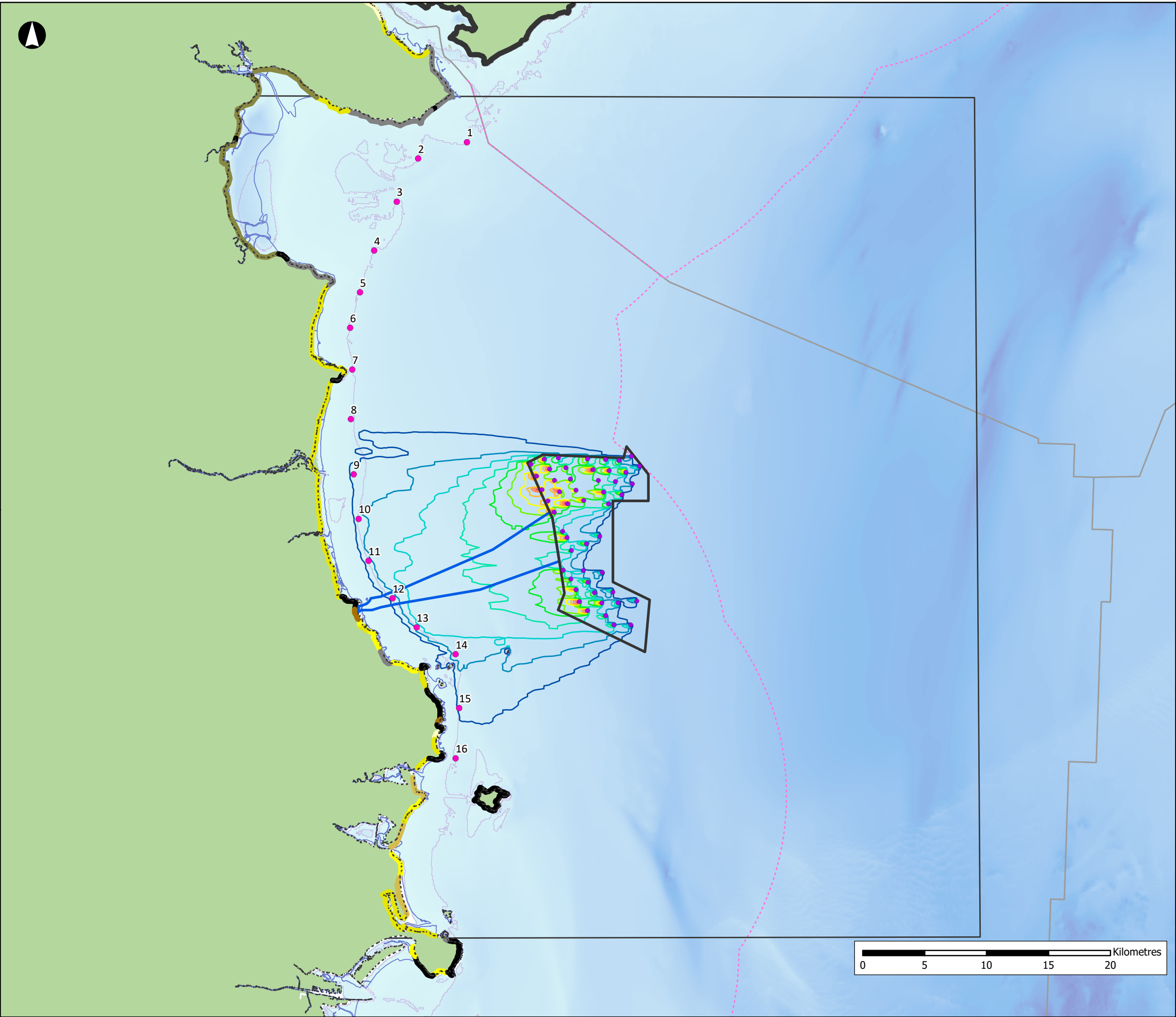
Date: May 2024

Scale: 1:50,000 @A3

Status: Issue

Datum: WGS84 Projection: UTM30N

Figure No: 10.22



Array Area

Offshore Export Cable Corridor

WTG Layout (Project Option 2)

Study Area

Low Water Mark

High Water Mark

EEZ Boundary

National EEZ (12nm)

Nearshore Sites

10m Contour

Coastal Types (EMODnet):

Beach that is part of extensive non-cohesive sedimentary systems (barrier, spit, tombolo)

Beach with rocky platform

Erodible rock and/or cliff, with rock waste and sediments (sand or pebbles) at its base

Erosion-resistant rock and/or cliff, without loose eroded material in the fronting sea

Gravel beach fronting upland (> 1 km long)

Muddy coastline, including tidal flat, salt marsh

Pocket beaches (< 200 m long)

Sand beach fronting upland (> 1 km long)

Small beaches

Reduction in Wave Height (m)

-0.65 - -0.60

-0.6 - -0.55

-0.55 - -0.50

-0.5 - -0.45

-0.45 - -0.40

-0.4 - -0.35

-0.35 - -0.30

-0.3 - -0.25

-0.25 - -0.20

-0.2 - -0.15

-0.15 - -0.10

-0.1 - -0.05

-0.05 - 0.00

Bathymetry (m)

0

200

NISA

North Irish Sea Array

ARUP

GoBe

Project

North Irish Sea Array

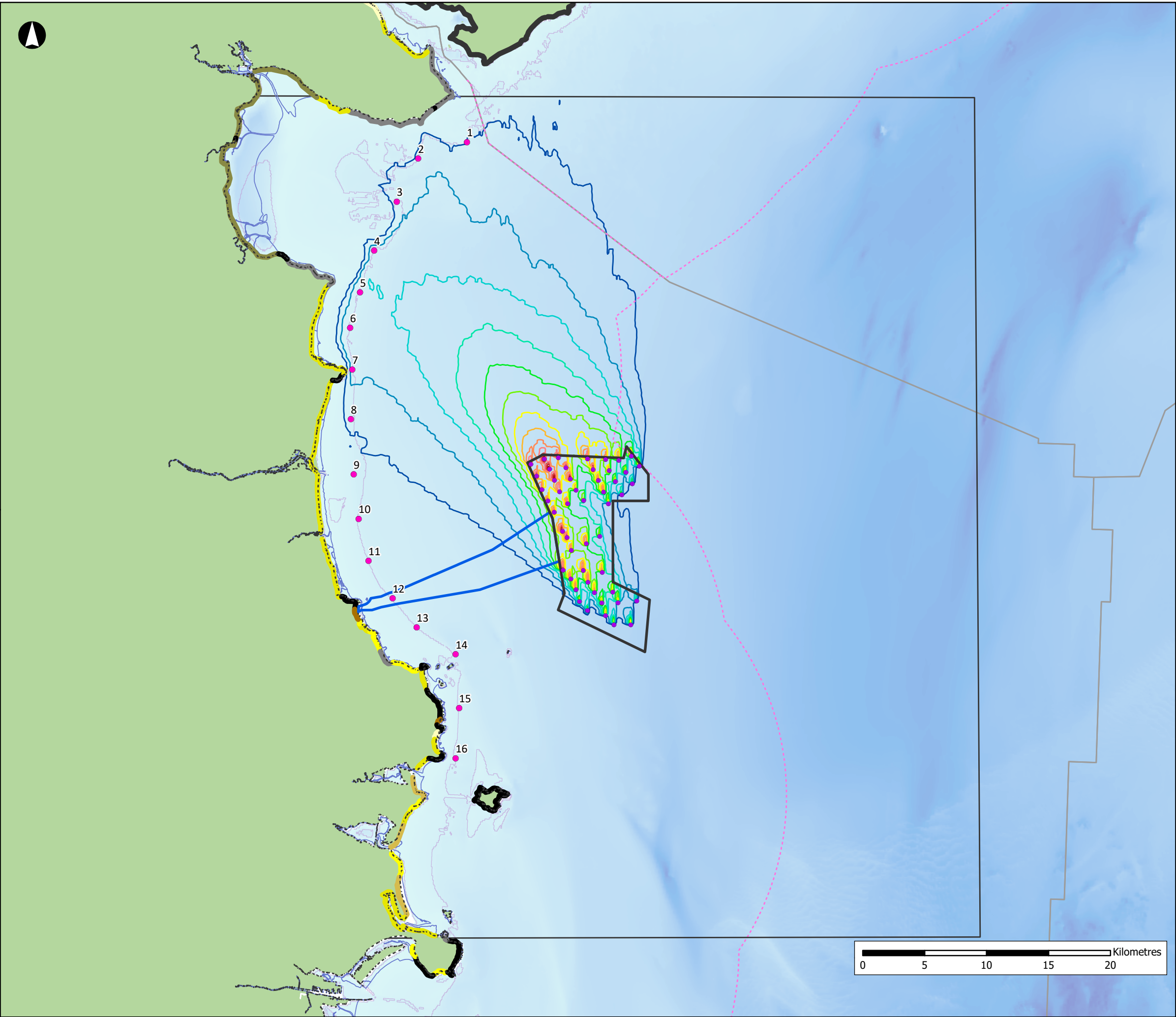
Offshore Wind Farm

Figure Title

Wave Height Reduction from

East-North-East

Job No: 281240	Datum: WGS84 Projection: UTM30N
Date: May 2024	Figure No: 10.23
Scale: 1:300,000 @A3	
Status: Issue	



Array Area

Offshore Export Cable Corridor

WTG Layout (Project Option 2)

Study Area

Low Water Mark

High Water Mark

EEZ Boundary

National EEZ (12nm)

Nearshore Sites

10m Contour

Coastal Types (EMODnet):

Beach that is part of extensive non-cohesive sedimentary systems (barrier, spit, tombolo)

Beach with rocky platform

Erodible rock and/or cliff, with rock waste and sediments (sand or pebbles) at its base

Erosion-resistant rock and/or cliff, without loose eroded material in the fronting sea

Gravel beach fronting upland (> 1 km long)

Muddy coastline, including tidal flat, salt marsh

Pocket beaches (< 200 m long)

Sand beach fronting upland (> 1 km long)

Small beaches

Reduction in Wave Height (m)

-0.65 - -0.60

-0.6 - -0.55

-0.55 - -0.50

-0.5 - -0.45

-0.45 - -0.40

-0.4 - -0.35

-0.35 - -0.30

-0.3 - -0.25

-0.25 - -0.20

-0.2 - -0.15

-0.15 - -0.10

-0.1 - -0.05

-0.05 - 0.00

Bathymetry (m)

0

200

NISA

North Irish Sea Array

ARUP

GoBe

Project

North Irish Sea Array Offshore Wind Farm

Figure Title

Wave Height Reduction from South-South-East

Job No: 281240

Date: May 2024

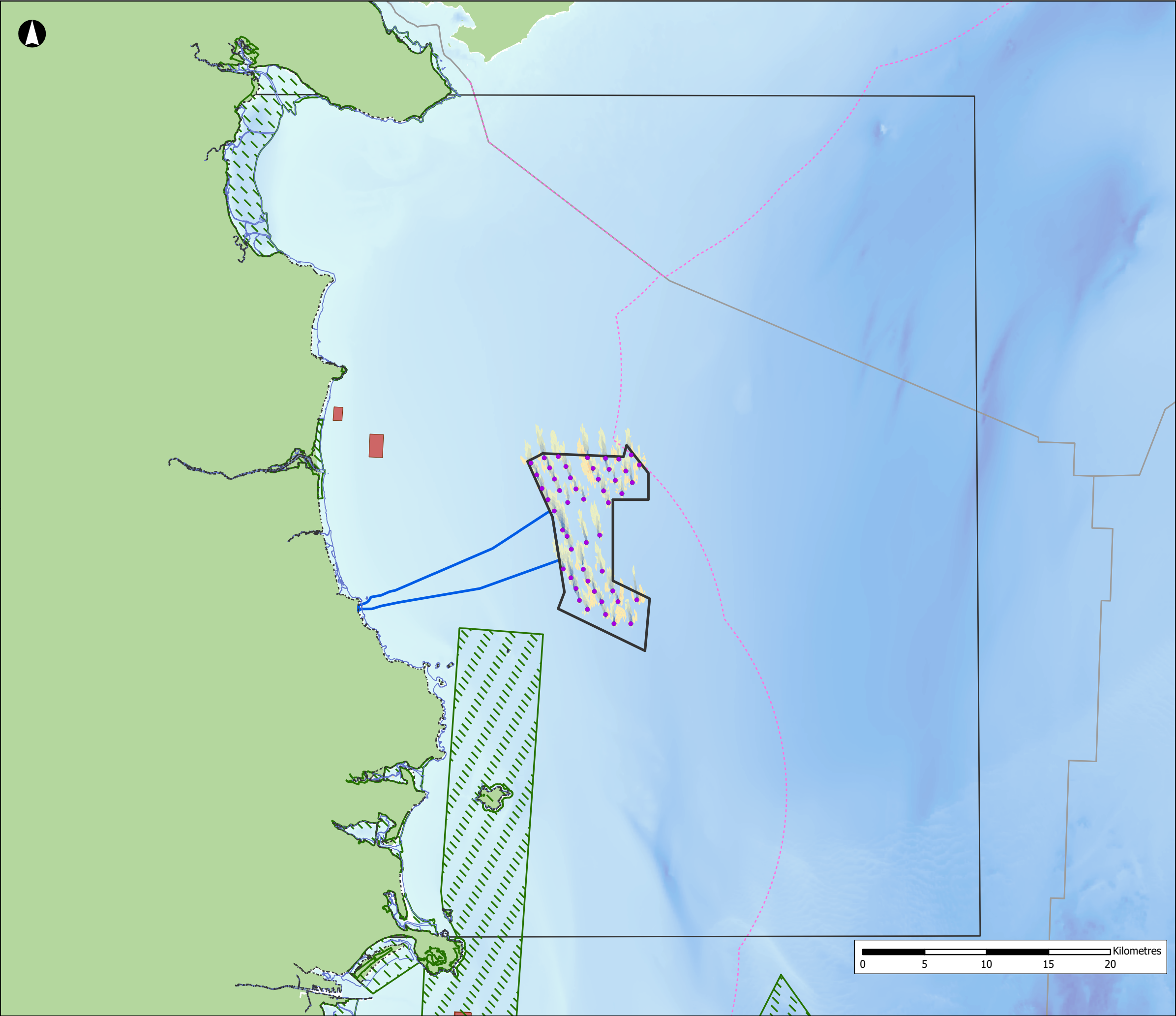
Scale: 1:300,000 @A3

Status: Issue

Datum: WGS84 Projection: UTM30N

Figure No:

10.24



Array Area

Offshore Export Cable Corridor

WTG Layout (Project Option 2)

Study Area

Low Water Mark

High Water Mark

EEZ Boundary

National EEZ (12nm)

Disposal At Sea Sites (Active)

Special Areas of Conservation

Change in Flow Speed (m/s)

< -0.02

-0.02 - -0.018

-0.018 - -0.016

-0.016 - -0.014

-0.014 - -0.012

-0.012 - -0.01

-0.01 - -0.008

-0.008 - -0.006

-0.006 - -0.004

-0.004 - -0.002

nil

0.002 - 0.004

0.004 - 0.006

0.006 - 0.008

0.008 - 0.01

0.01 - 0.012

0.012 - 0.014

0.014 - 0.016

0.016 - 0.018

0.018 - 0.02

> 0.02

Bathymetry (m)

0

200

NISA

North Irish Sea Array

ARUP

GoBe

Project

North Irish Sea Array

Offshore Wind Farm

Figure Title

Tidal Modifications - Change in

Peak Flood Flow Speed on

Spring Tide

Job No: 281240

Date: May 2024

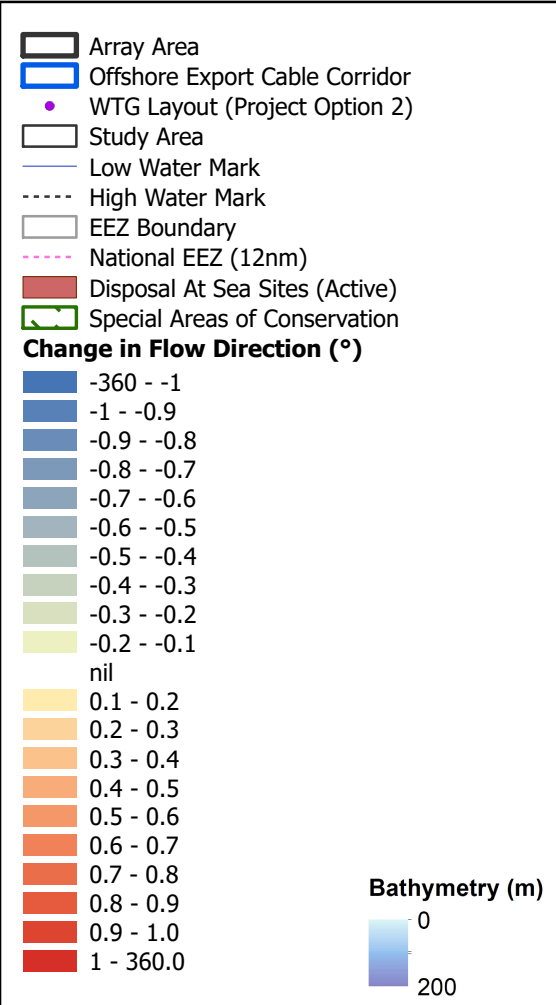
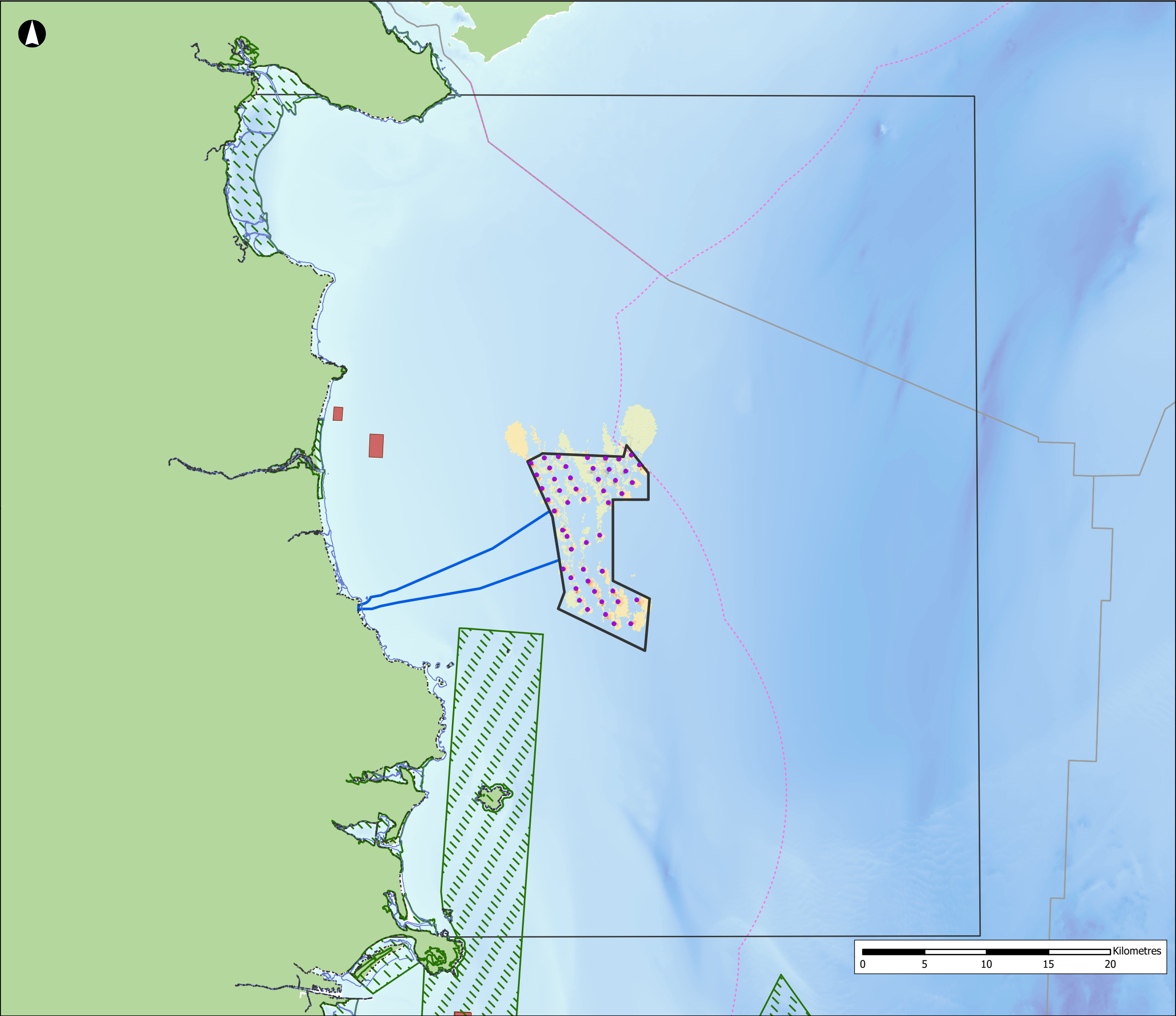
Scale: 1:300,000 @A3

Status: Issue

Datum: WGS84 Projection: UTM30N

Figure No:

10.25



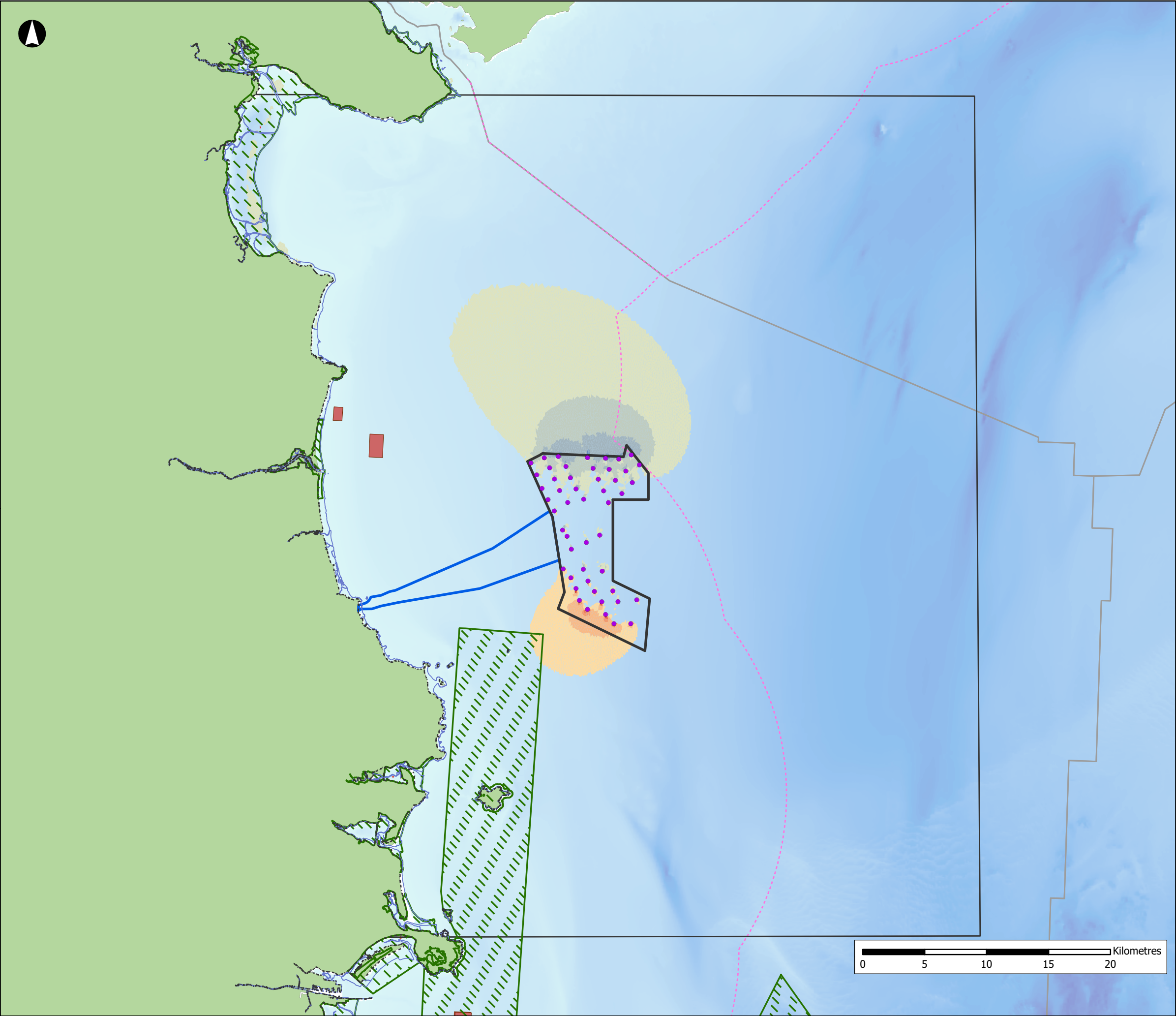
NISA
North Irish Sea Array

ARUP **GoBe**

Project
**North Irish Sea Array
Offshore Wind Farm**

Figure Title
**Tidal Modifications - Change in
Peak Flood Flow Direction on
Spring Tide**

Job No: 281240	Datum: WGS84 Projection: UTM30N
Date: May 2024	Figure No:
Scale: 1:300,000 @A3	10.26
Status: Issue	



Array Area

Offshore Export Cable Corridor

WTG Layout (Project Option 2)

Study Area

Low Water Mark

High Water Mark

EEZ Boundary

National EEZ (12nm)

Disposal At Sea Sites (Active)

Special Areas of Conservation

Change in Water Levels (m)

< -0.0007

-0.0007 - -0.0006

-0.0006 - -0.0005

-0.0005 - -0.0004

-0.0004 - -0.0003

-0.0003 - -0.0002

nil

0.0002 - 0.0003

0.0003 - 0.0004

0.0004 - 0.0005

0.0005 - 0.0006

0.0006 - 0.0007

> 0.0007

Bathymetry (m)

0

200

NISA

North Irish Sea Array

ARUP

GoBe

Project

North Irish Sea Array

Offshore Wind Farm

Figure Title

Tidal Modifications - Change in

Surface Elevation at Peak Flood

on Spring Tide

Job No: 281240

Date: May 2024

Scale: 1:300,000 @A3

Status: Issue

Datum: WGS84 Projection: UTM30N

Figure No:

10.27