

Legend

- Study Area
- Proposed Development Boundary
- High Water Mark
- Mineral Localities
 - Metallic
 - Non-metallic
- Granular Aggregate Potential
 - Very High potential
 - High potential
 - Moderate potential
 - Low potential
 - Very Low potential

NISA

North Irish Sea Array

ARUP

Project

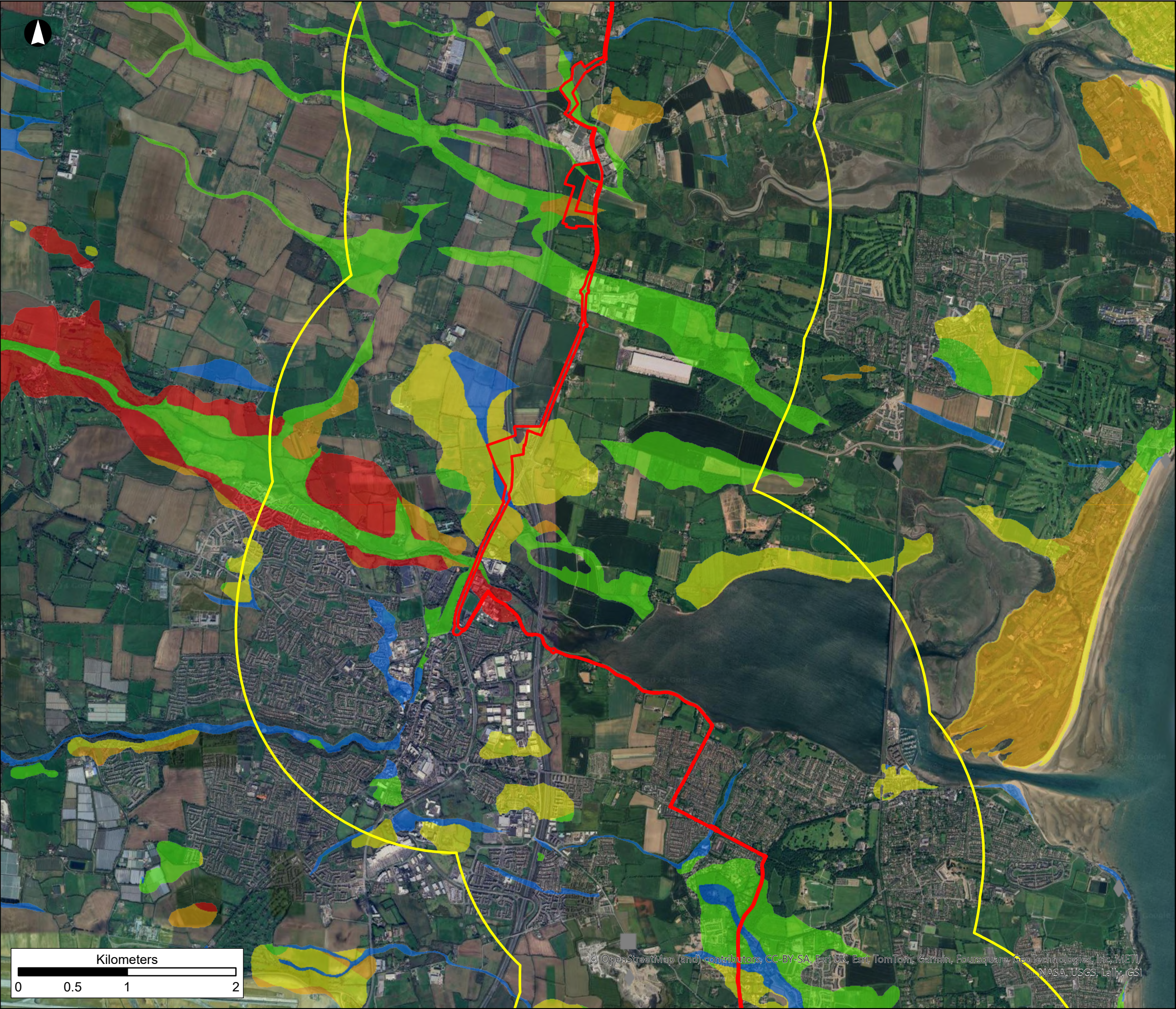
North Irish Sea Array Offshore Wind Farm

Figure Title

Granular Aggregate Potential

Sheet 2 of 4

Job No: 281240	Figure No: <h1>21.16</h1>
Date: May 2024	
Scale: 1:34,000	
Status: Issue	



Legend

Study Area

Proposed Development Boundary

High Water Mark

Active Quarries and Pits 2014

Crushed Rock

Mineral Localities

Metallic

Non-metallic

Granular Aggregate Potential

Very High potential

High potential

Moderate potential

Low potential

Very Low potential

NISA

North Irish Sea Array

ARUP

Project

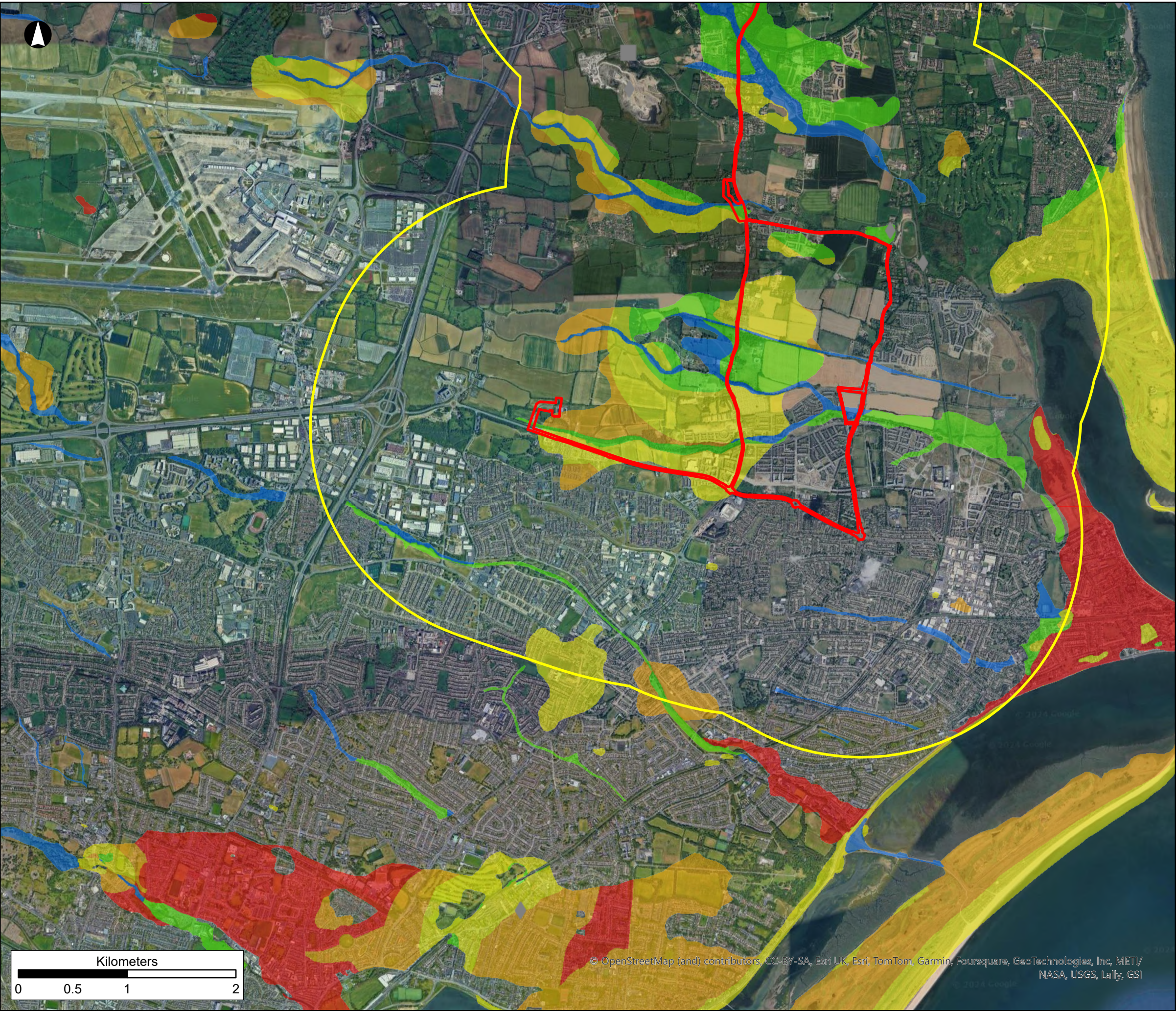
North Irish Sea Array Offshore Wind Farm

Figure Title

Granular Aggregate Potential

Sheet 3 of 4

Job No: 281240	Figure No: <div>21.16</div>
Date: May 2024	
Scale: 1:34,000	
Status: Issue	



Legend

- Study Area
- Proposed Development Boundary
- High Water Mark
- Active Quarries and Pits 2014
 - Crushed Rock
- Mineral Localities
 - Metallic
 - Non-metallic
- Granular Aggregate Potential
 - Very High potential
 - High potential
 - Moderate potential
 - Low potential
 - Very Low potential

NISA

North Irish Sea Array

ARUP

Project

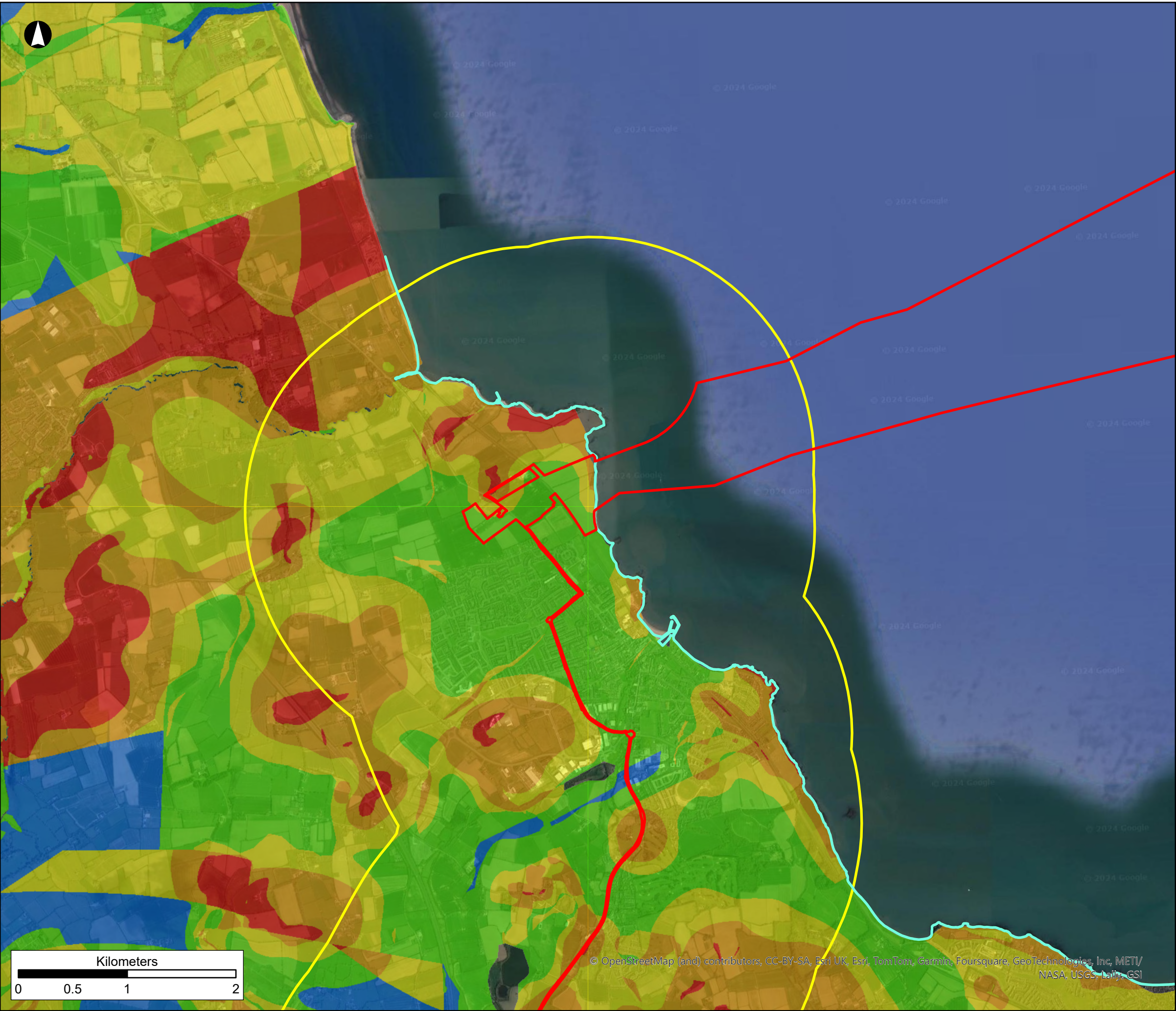
North Irish Sea Array
Offshore Wind Farm

Figure Title

Granular Aggregate
Potential

Sheet 4 of 4

Job No: 281240	Figure No:
Date: May 2024	21.16
Scale: 1:34,000	
Status: Issue	



Legend

- Study Area
- Proposed Development Boundary
- High Water Mark

Crushed Rock Aggregate Potential

- Very High potential
- High potential
- Moderate potential
- Low potential
- Very Low potential

NISA

North Irish Sea Array

ARUP

Project

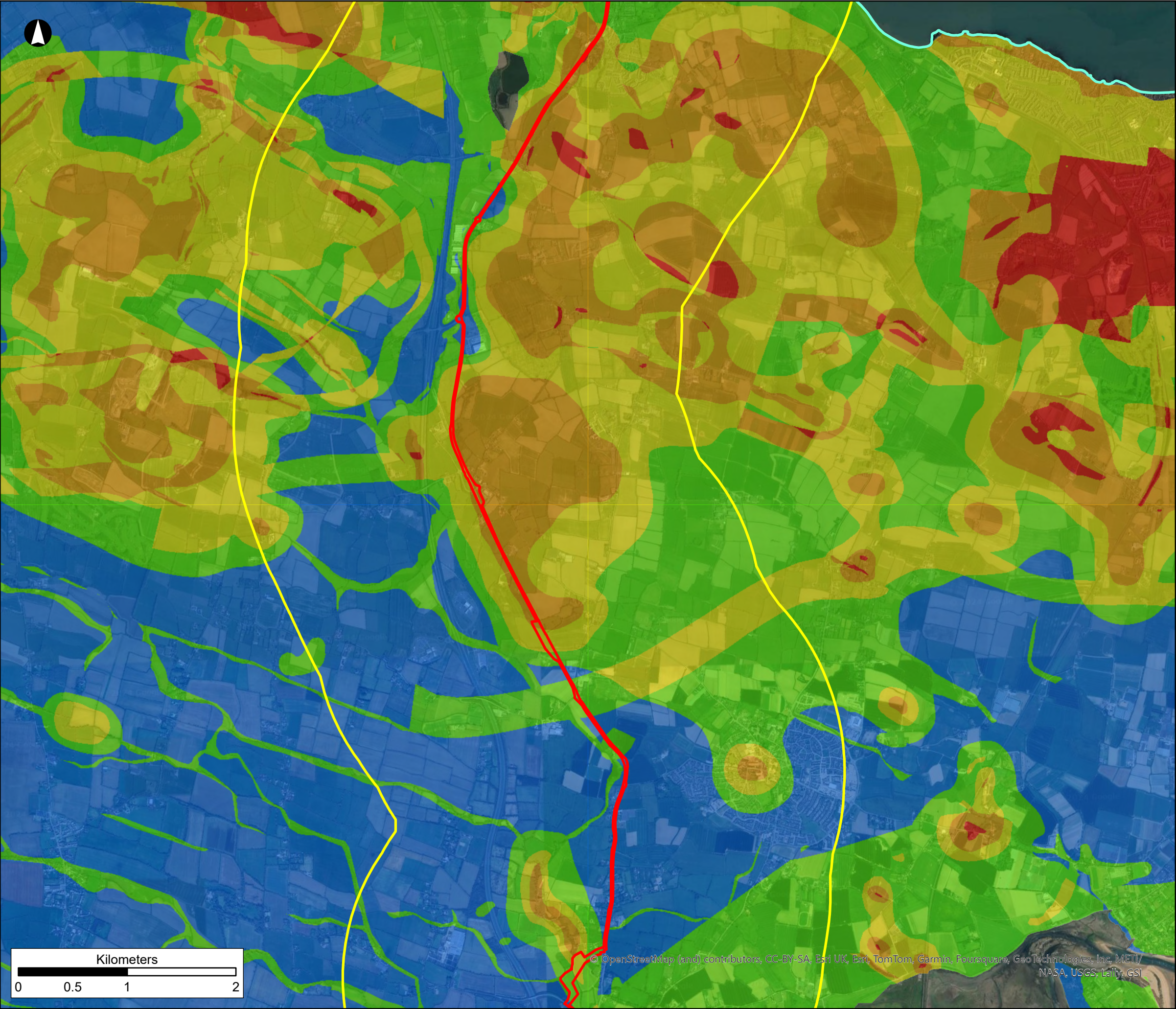
**North Irish Sea Array
Offshore Wind Farm**

Figure Title

**Crushed Rock
Aggregate Potential**

Sheet 1 of 4

Job No: 281240	Figure No: <h1>21.17</h1>
Date: May 2024	
Scale: 1:34,000	
Status: Issue	



Legend

Study Area

Proposed Development Boundary

High Water Mark

Crushed Rock Aggregate Potential

Very High potential

High potential

Moderate potential

Low potential

Very Low potential

NISA

North Irish Sea Array

ARUP

Project

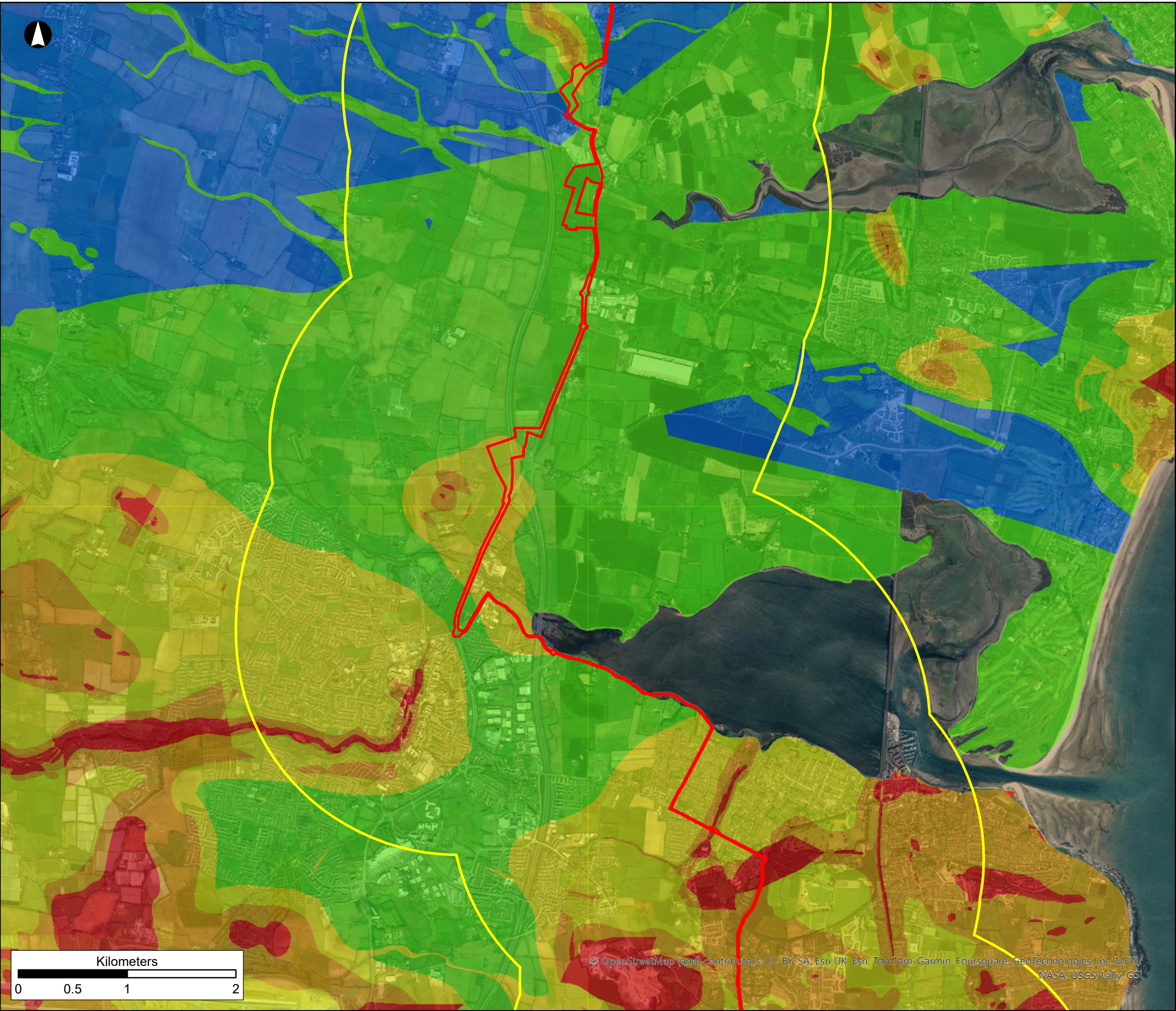
North Irish Sea Array Offshore Wind Farm

Figure Title

Crushed Rock Aggregate Potential

Sheet 2 of 4

Job No: 281240	Figure No: <h1>21.17</h1>
Date: May 2024	
Scale: 1:34,000	
Status: Issue	



Legend

- Study Area
- Proposed Development Boundary
- High Water Mark

Crushed Rock Aggregate Potential

- Very High potential
- High potential
- Moderate potential
- Low potential
- Very Low potential

NISA

North Irish Sea Array

ARUP

Project

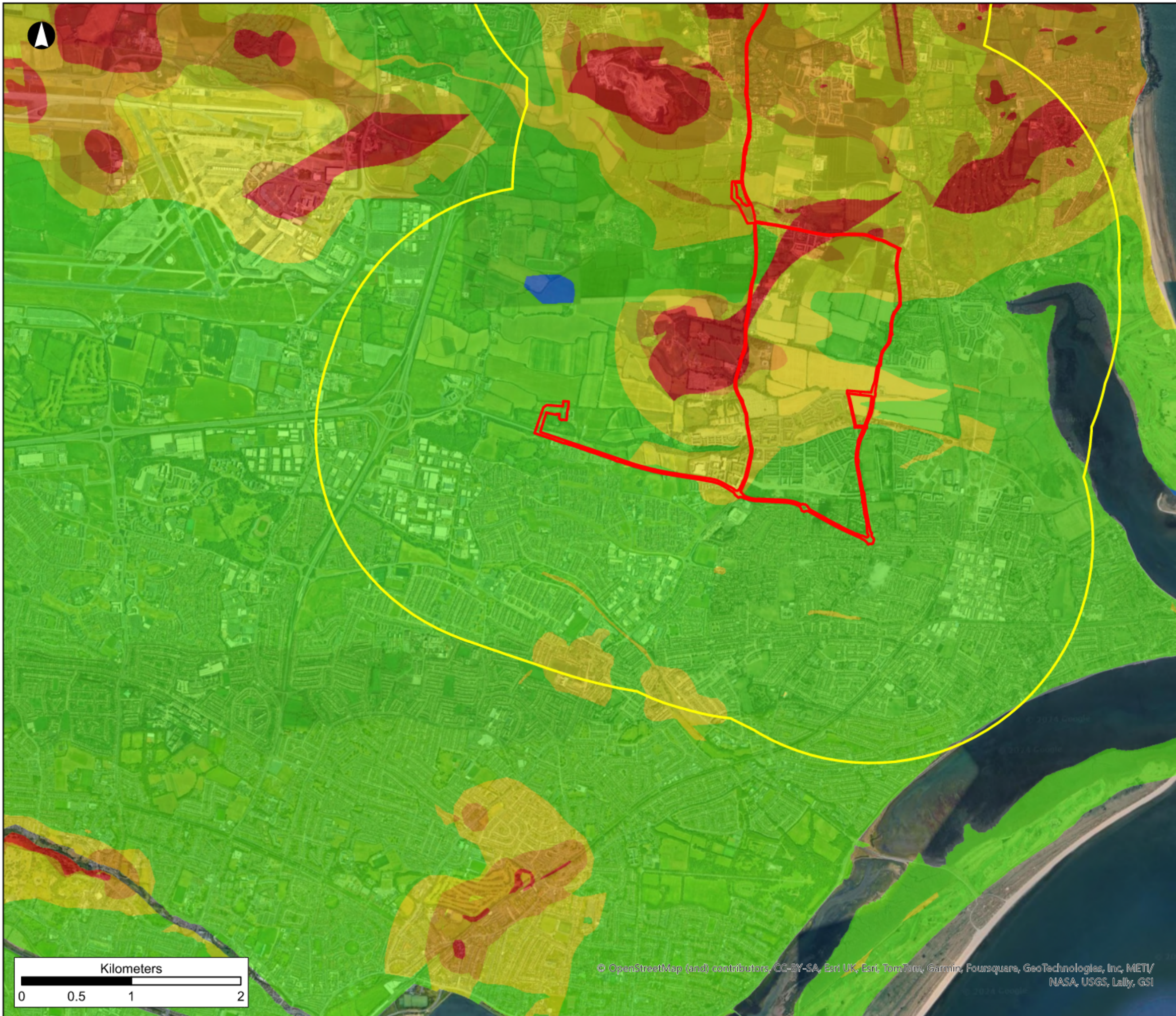
North Irish Sea Array Offshore Wind Farm

Figure Title

Crushed Rock Aggregate Potential

Sheet 3 of 4

Job No:	281240	Figure No: <h1>21.17</h1>
Date:	May 2024	
Scale:	1:34,000	
Status:	Issue	



Legend

- Study Area
- Proposed Development Boundary
- High Water Mark

Crushed Rock Aggregate Potential

- Very High potential
- High potential
- Moderate potential
- Low potential
- Very Low potential

NISA

North Irish Sea Array

ARUP

Project

North Irish Sea Array Offshore Wind Farm

Figure Title

Crushed Rock Aggregate Potential

Sheet 4 of 4

Job No: 281240	Figure No:
Date: May 2024	21.17
Scale: 1:34,000	
Status: Issue	