

Volume 7A: Figures

# Figures for Chapter 22 Water



- Legend**
- Proposed Development Boundary
  - Lakes
  - Rivers
  - Sub-catchment
  - Water Framework Directive Catchments
  - Eastern River Basin District

**Notes**

# NISA

North Irish Sea Array

ARUP

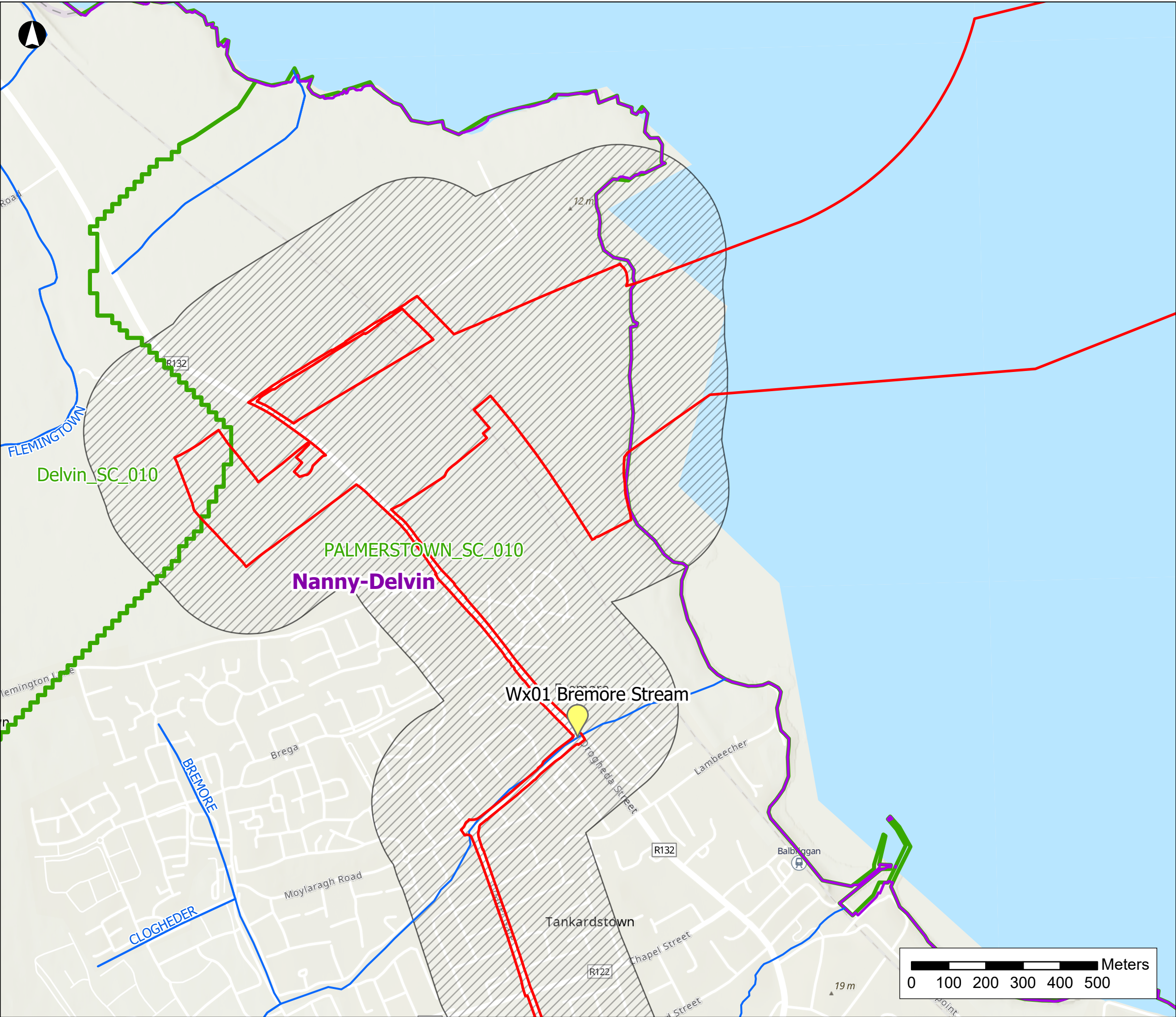
**Project**  
North Irish Sea Array  
Offshore Wind Farm

**Figure Title**  
Water Assessment:  
Overview

**Job No:** 281240  
**Date:** May 2024  
**Scale:** 1:100,000  
**Status:** Issue

**Figure No:**  
**22.1**





- Legend**
- Proposed Development Boundary
  - Water Study Area
  - Watercourse Crossings
  - Rivers
  - Lakes
  - Water Framework Directive Catchments
  - Sub-catchment

**Notes**  
Watercourse lines are taken from the EPA database and are not always accurately positioned.

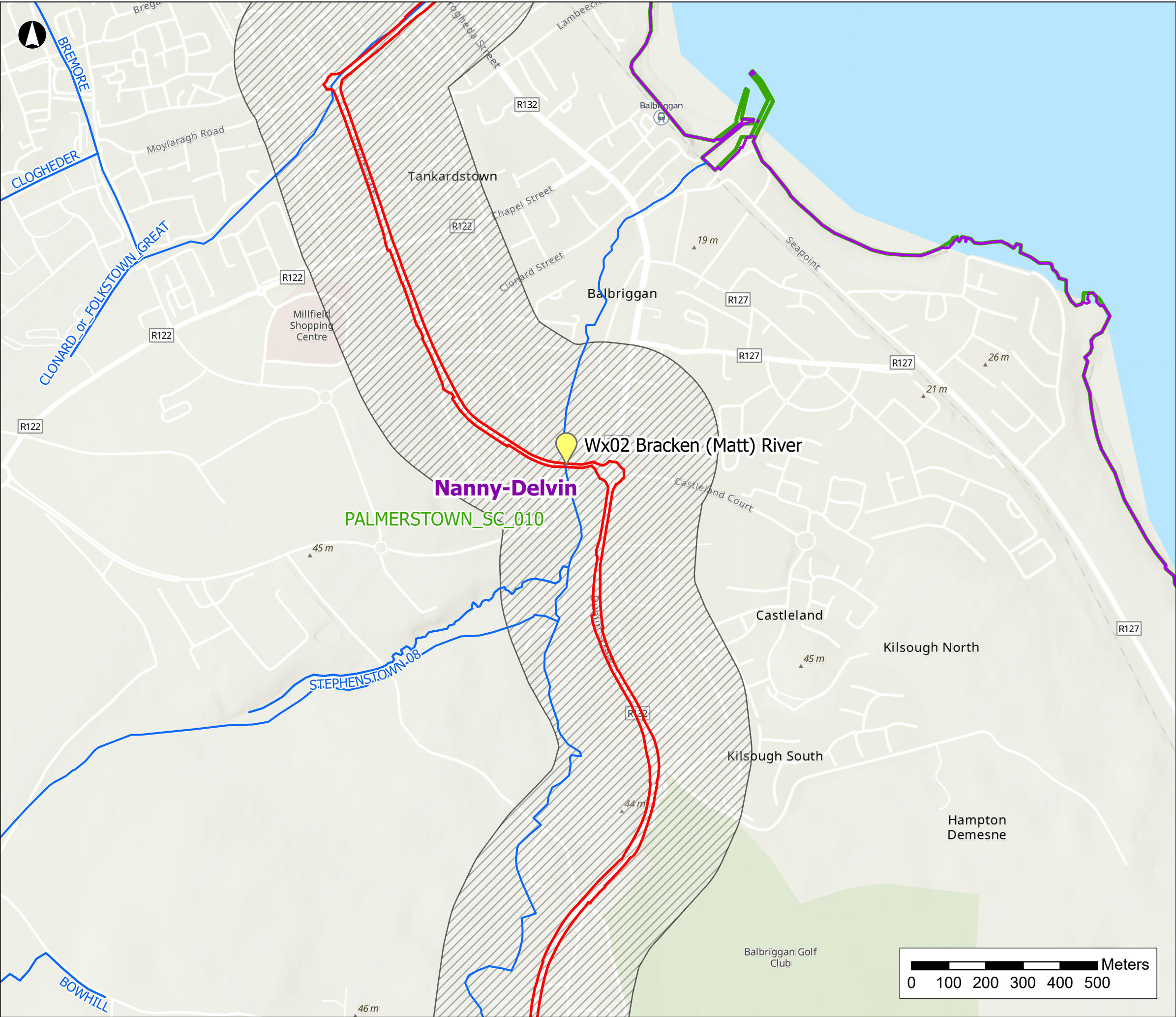
**NISA**  
*North Irish Sea Array*

**ARUP**

**Project**  
**North Irish Sea Array Offshore Wind Farm**

**Figure Title**  
**Water Assessment: Local Features and Water Crossings**

<b>Job No:</b> 281240	<b>Figure No:</b>  <b>22.2 (1)</b>
<b>Date:</b> May 2024	
<b>Scale:</b> 1:10,000	
<b>Status:</b> Issue	



**Legend**

- Proposed Development Boundary
- Water Study Area
- Watercourse Crossings
- Rivers
- Lakes
- Water Framework Directive Catchments
- Sub-catchment

**Notes**  
Watercourse lines are taken from the EPA database and are not always accurately positioned.

# NISA

North Irish Sea Array

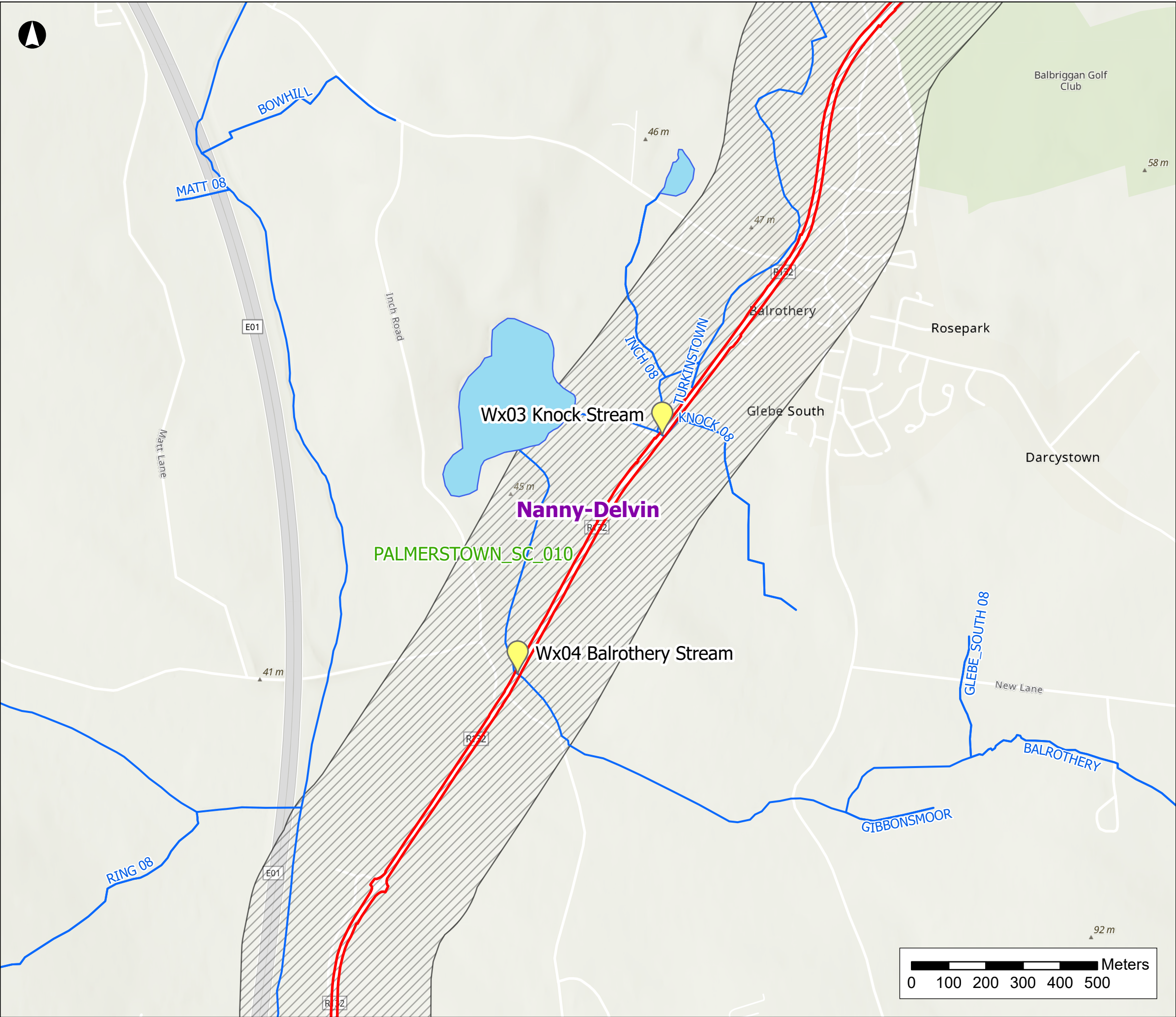
## ARUP

**Project**  
**North Irish Sea Array Offshore Wind Farm**

**Figure Title**  
**Water Assessment: Local Features and Water Crossings**

<b>Job No:</b> 281240	<b>Figure No:</b>  <b>22.2 (2)</b>
<b>Date:</b> May 2024	
<b>Scale:</b> 1:10,000	
<b>Status:</b> Issue	





- Legend**
- Proposed Development Boundary
  - Water Study Area
  - Watercourse Crossings
  - Rivers
  - Lakes
  - Water Framework Directive Catchments
  - Sub-catchment

**Notes**  
Watercourse lines are taken from the EPA database and are not always accurately positioned.

# NISA

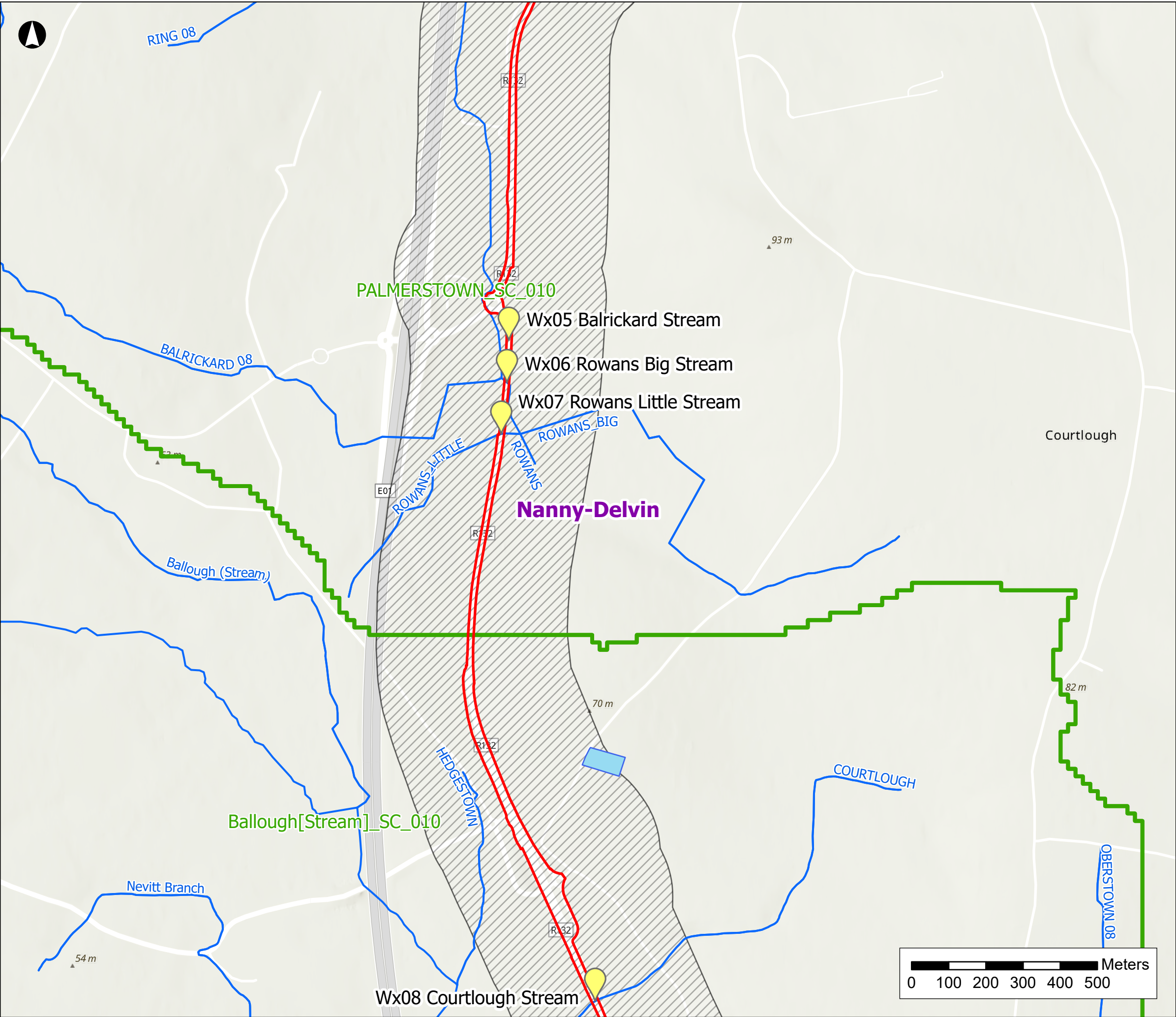
North Irish Sea Array

ARUP

**Project**  
North Irish Sea Array  
Offshore Wind Farm

**Figure Title**  
Water Assessment: Local  
Features and Water  
Crossings

<b>Job No:</b> 281240	<b>Figure No:</b>  <b>22.2 (3)</b>
<b>Date:</b> May 2024	
<b>Scale:</b> 1:10,000	
<b>Status:</b> Issue	



**Legend**

- Proposed Development Boundary
- Water Study Area
- Watercourse Crossings
- Rivers
- Lakes
- Water Framework Directive Catchments
- Sub-catchment

**Notes**  
Watercourse lines are taken from the EPA database and are not always accurately positioned.

**NISA**  
North Irish Sea Array

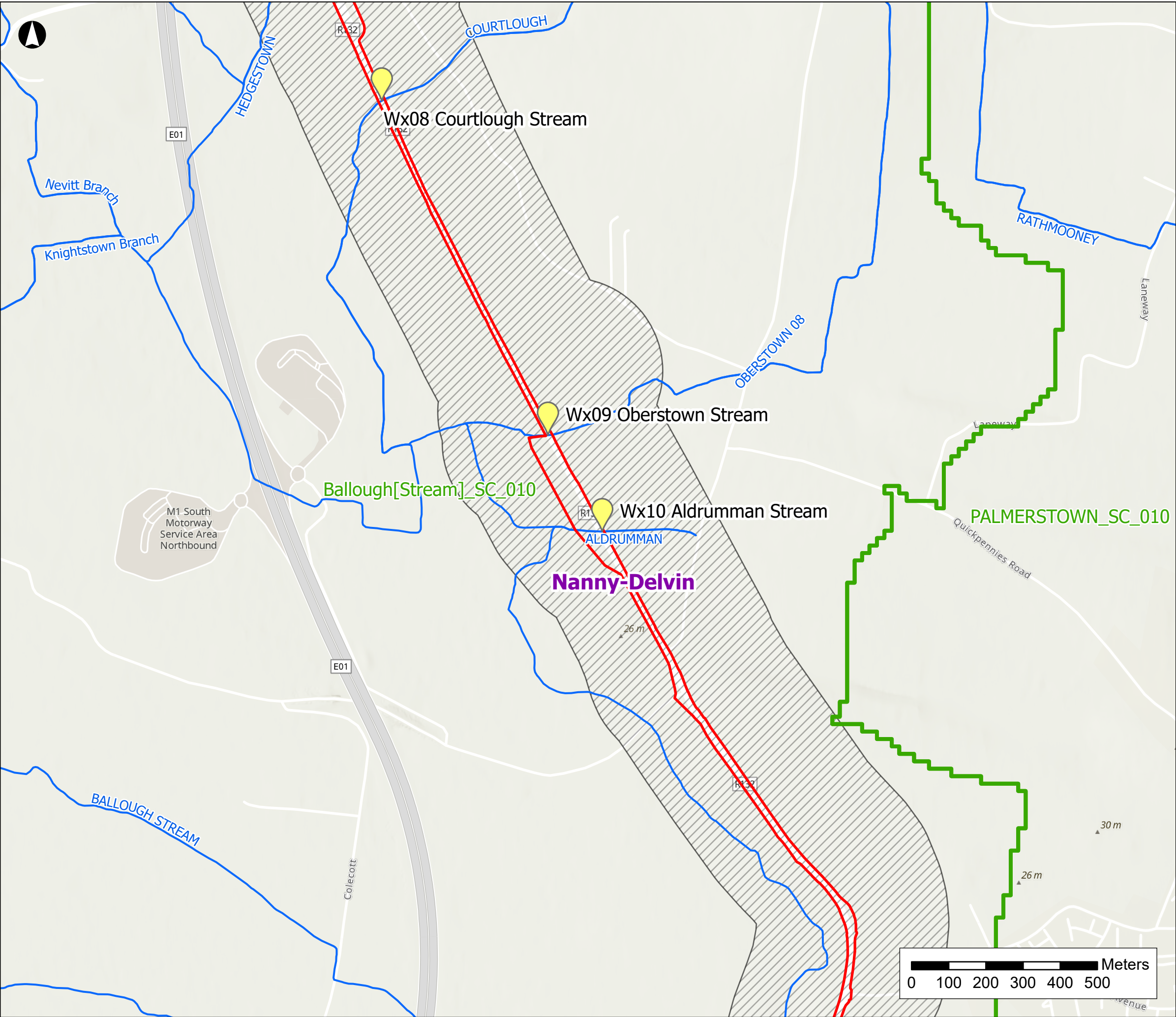
**ARUP**

**Project**  
North Irish Sea Array  
Offshore Wind Farm

**Figure Title**  
Water Assessment: Local  
Features and Water  
Crossings

<b>Job No:</b> 281240	<b>Figure No:</b>  <b>22.2 (4)</b>
<b>Date:</b> May 2024	
<b>Scale:</b> 1:10,000	
<b>Status:</b> Issue	





**Legend**

Proposed Development Boundary

Water Study Area

Watercourse Crossings

Rivers

Lakes

Water Framework Directive Catchments

Sub-catchment

**Notes**

Watercourse lines are taken from the EPA database and are not always accurately positioned.

NISA

North Irish Sea Array

ARUP

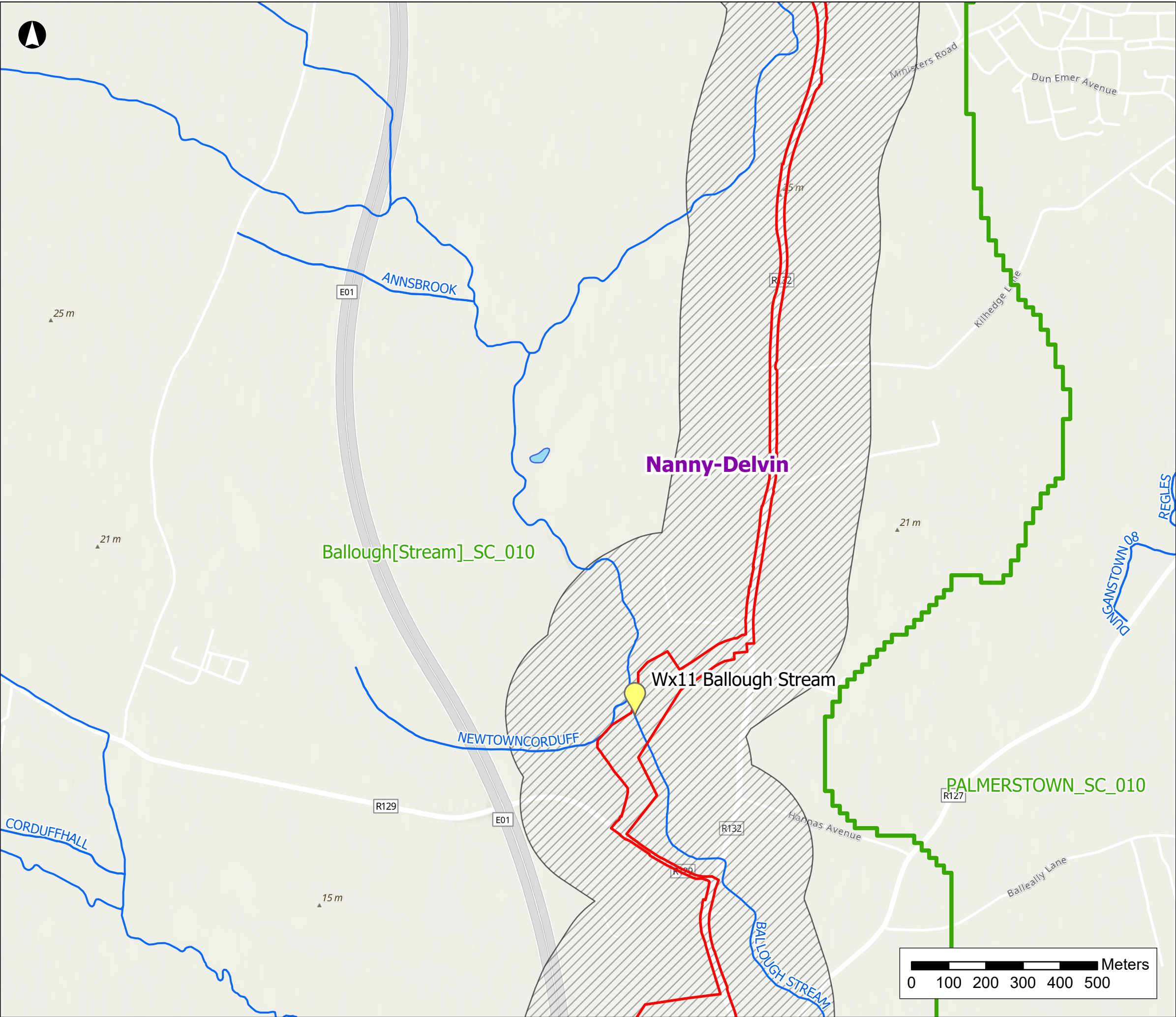
Project

North Irish Sea Array  
Offshore Wind Farm

Figure Title

Water Assessment: Local  
Features and Water  
Crossings

Job No:	281240	Figure No:  <b>22.2 (5)</b>
Date:	May 2024	
Scale:	1:10,000	
Status:	Issue	



- Legend**
- Proposed Development Boundary
  - Water Study Area
  - Watercourse Crossings
  - Rivers
  - Lakes
  - Water Framework Directive Catchments
  - Sub-catchment

**Notes**  
Watercourse lines are taken from the EPA database and are not always accurately positioned.

**NISA**  
North Irish Sea Array

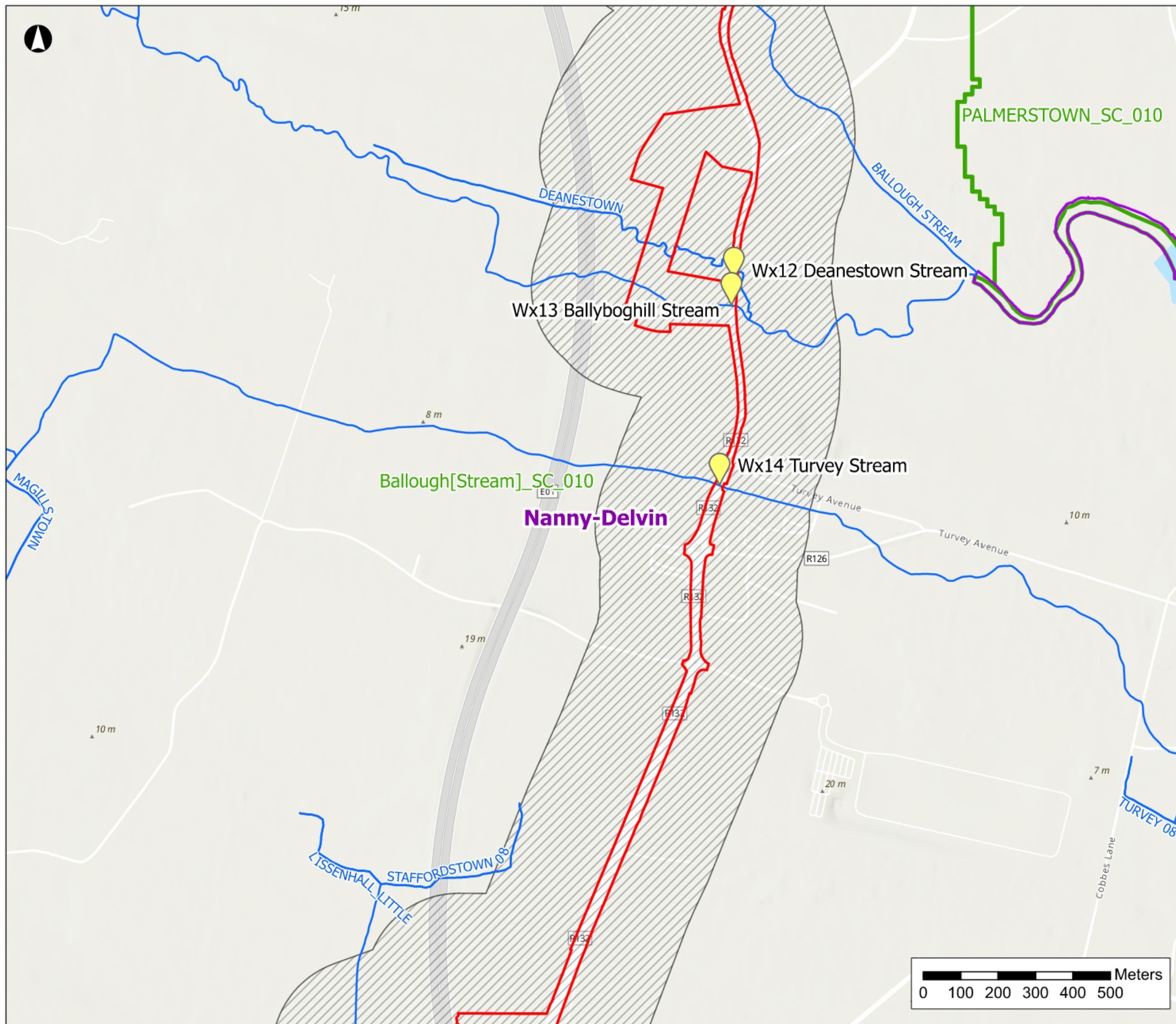
**ARUP**

**Project**  
North Irish Sea Array  
Offshore Wind Farm

**Figure Title**  
Water Assessment: Local  
Features and Water  
Crossings

<b>Job No:</b> 281240	<b>Figure No:</b>  <b>22.2 (6)</b>
<b>Date:</b> May 2024	
<b>Scale:</b> 1:10,000	
<b>Status:</b> Issue	





#### Legend

- Proposed Development Boundary
- Water Study Area
- Watercourse Crossings
- Rivers
- Lakes
- Water Framework Directive Catchments
- Sub-catchment

#### Notes

Watercourse lines are taken from the EPA database and are not always accurately positioned.

**NISA**  
North Irish Sea Array

**ARUP**

#### Project

**North Irish Sea Array  
Offshore Wind Farm**

#### Figure Title

**Water Assessment: Local  
Features and Water  
Crossings**

**Job No:** 281240

**Date:** May 2024

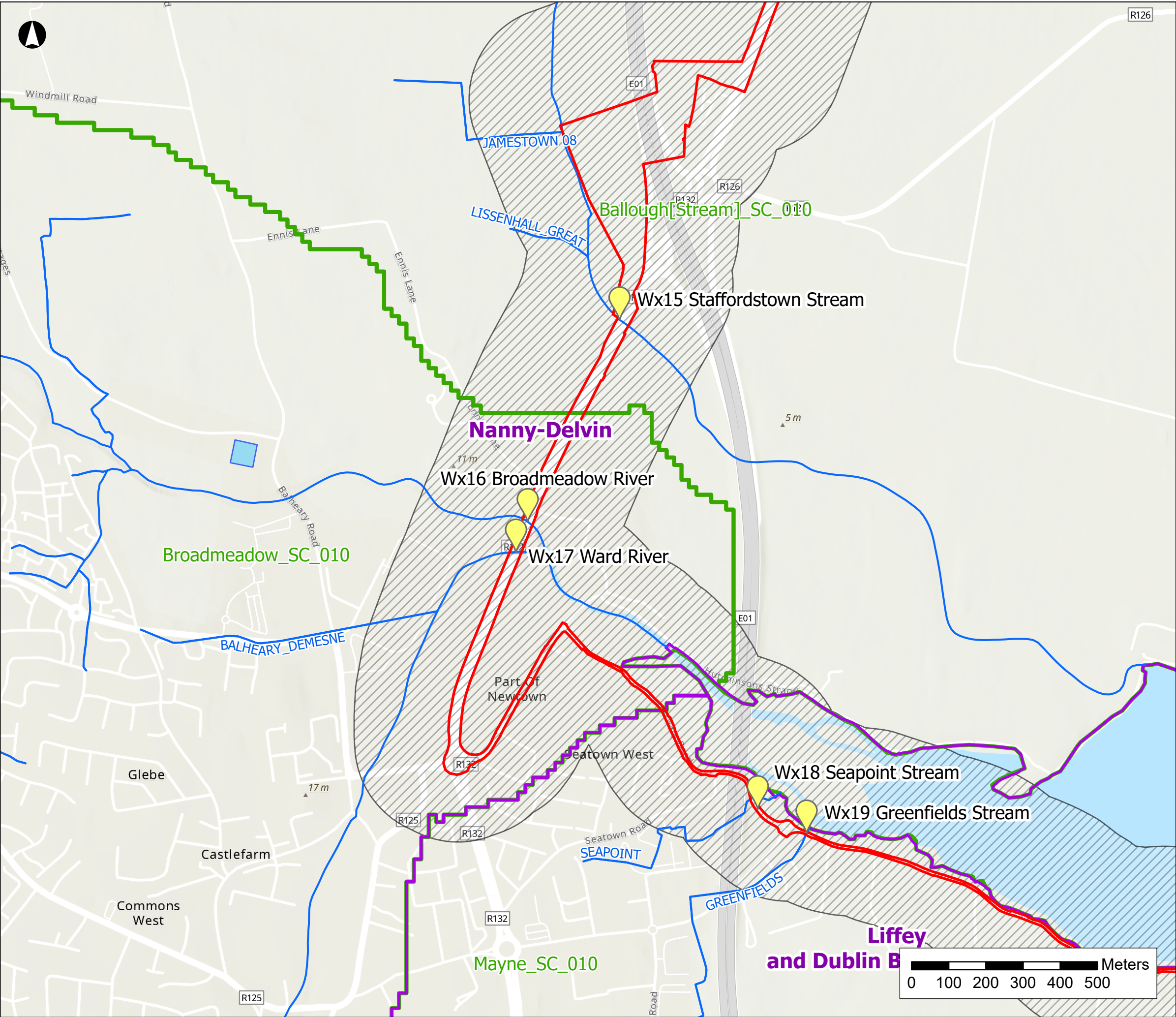
**Scale:** 1:10,000

**Status:** Issue

**Figure No:**

**22.2 (7)**





**Legend**

- Proposed Development Boundary
- Water Study Area
- Watercourse Crossings
- Rivers
- Lakes
- Water Framework Directive Catchments
- Sub-catchment

**Notes**  
Watercourse lines are taken from the EPA database and are not always accurately positioned.

**NISA**  
*North Irish Sea Array*

**ARUP**

**Project**  
**North Irish Sea Array Offshore Wind Farm**

**Figure Title**  
**Water Assessment: Local Features and Water Crossings**

<b>Job No:</b> 281240	<b>Figure No:</b>  <b>22.2 (8)</b>
<b>Date:</b> May 2024	
<b>Scale:</b> 1:10,000	
<b>Status:</b> Issue	





**Legend**

- Proposed Development Boundary
- Water Study Area
- Watercourse Crossings
- Rivers
- Lakes
- Water Framework Directive Catchments
- Sub-catchment

**Notes**  
Watercourse lines are taken from the EPA database and are not always accurately positioned.

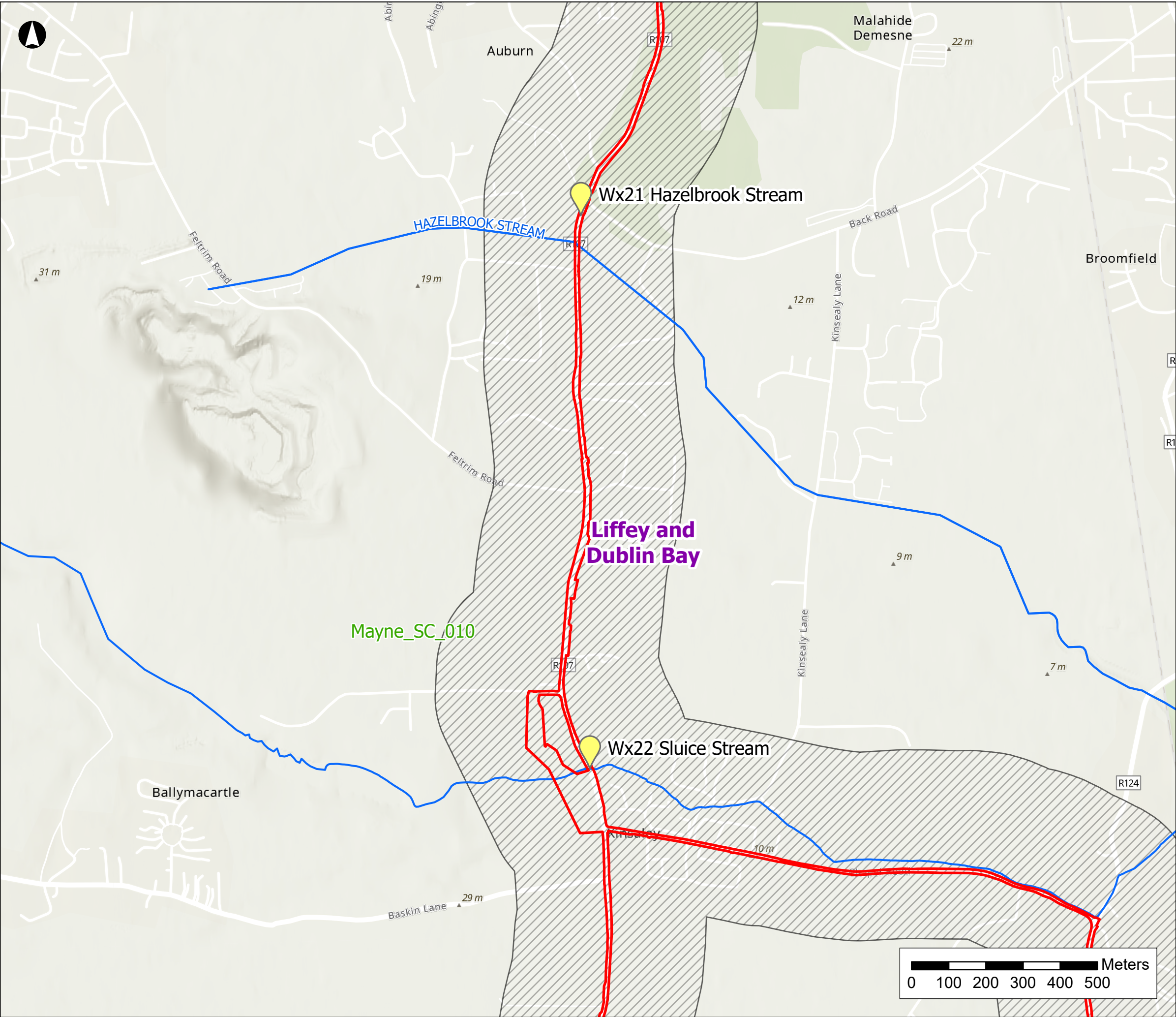
**NISA**  
*North Irish Sea Array*

**ARUP**

**Project**  
**North Irish Sea Array Offshore Wind Farm**

**Figure Title**  
**Water Assessment: Local Features and Water Crossings**

<b>Job No:</b> 281240	<b>Figure No:</b>  <b>22.2 (9)</b>
<b>Date:</b> May 2024	
<b>Scale:</b> 1:10,000	
<b>Status:</b> Issue	



- Legend**
- Proposed Development Boundary
  - Water Study Area
  - Watercourse Crossings
  - Rivers
  - Lakes
  - Water Framework Directive Catchments
  - Sub-catchment

**Notes**  
Watercourse lines are taken from the EPA database and are not always accurately positioned.

**NISA**  
*North Irish Sea Array*

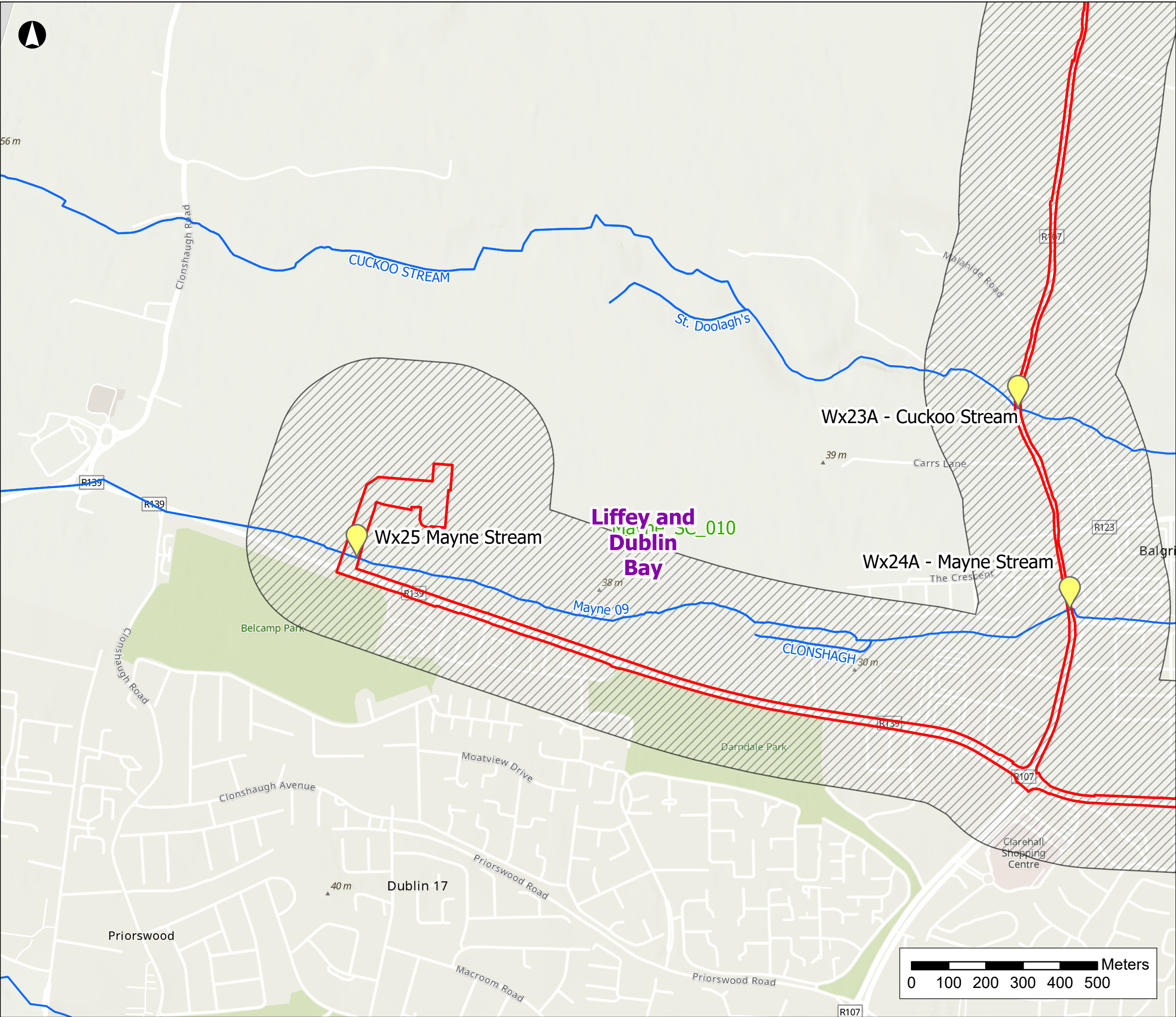
**ARUP**

**Project**  
**North Irish Sea Array  
Offshore Wind Farm**

**Figure Title**  
**Water Assessment: Local  
Features and Water  
Crossings**

<b>Job No:</b> 281240	<b>Figure No:</b>  <b>22.2 (10)</b>
<b>Date:</b> May 2024	
<b>Scale:</b> 1:10,000	
<b>Status:</b> Issue	





- Legend**
- Proposed Development Boundary
  - Water Study Area
  - Watercourse Crossings
  - Rivers
  - Lakes
  - Water Framework Directive Catchments
  - Sub-catchment

**Notes**  
Watercourse lines are taken from the EPA database and are not always accurately positioned.

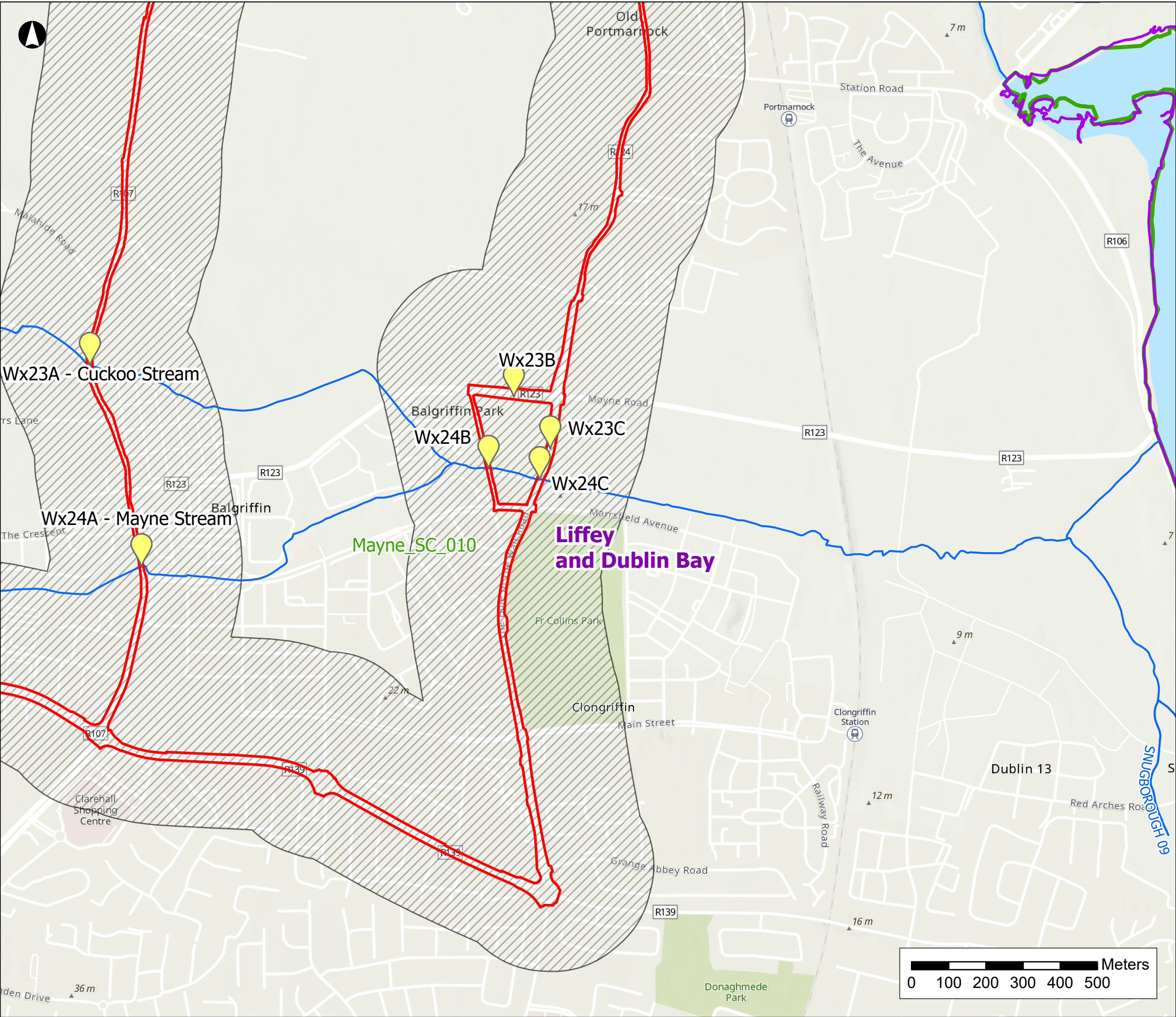
**NISA**  
North Irish Sea Array

**ARUP**

**Project**  
North Irish Sea Array  
Offshore Wind Farm

**Figure Title**  
Water Assessment: Local  
Features and Water  
Crossings

<b>Job No:</b> 281240	<b>Figure No:</b>  <b>22.2 (11)</b>
<b>Date:</b> May 2024	
<b>Scale:</b> 1:10,000	
<b>Status:</b> Issue	



**Legend**

- Proposed Development Boundary
- Water Study Area
- Watercourse Crossings
- Rivers
- Lakes
- Water Framework Directive Catchments
- Sub-catchment

**Notes**  
Watercourse lines are taken from the EPA database and are not always accurately positioned.

**NISA**  
North Irish Sea Array

**ARUP**

**Project**  
North Irish Sea Array  
Offshore Wind Farm

**Figure Title**  
Water Assessment: Local  
Features and Water  
Crossings

<b>Job No:</b> 281240	<b>Figure No:</b>  <b>22.2 (12)</b>
<b>Date:</b> May 2024	
<b>Scale:</b> 1:10,000	
<b>Status:</b> Issue	