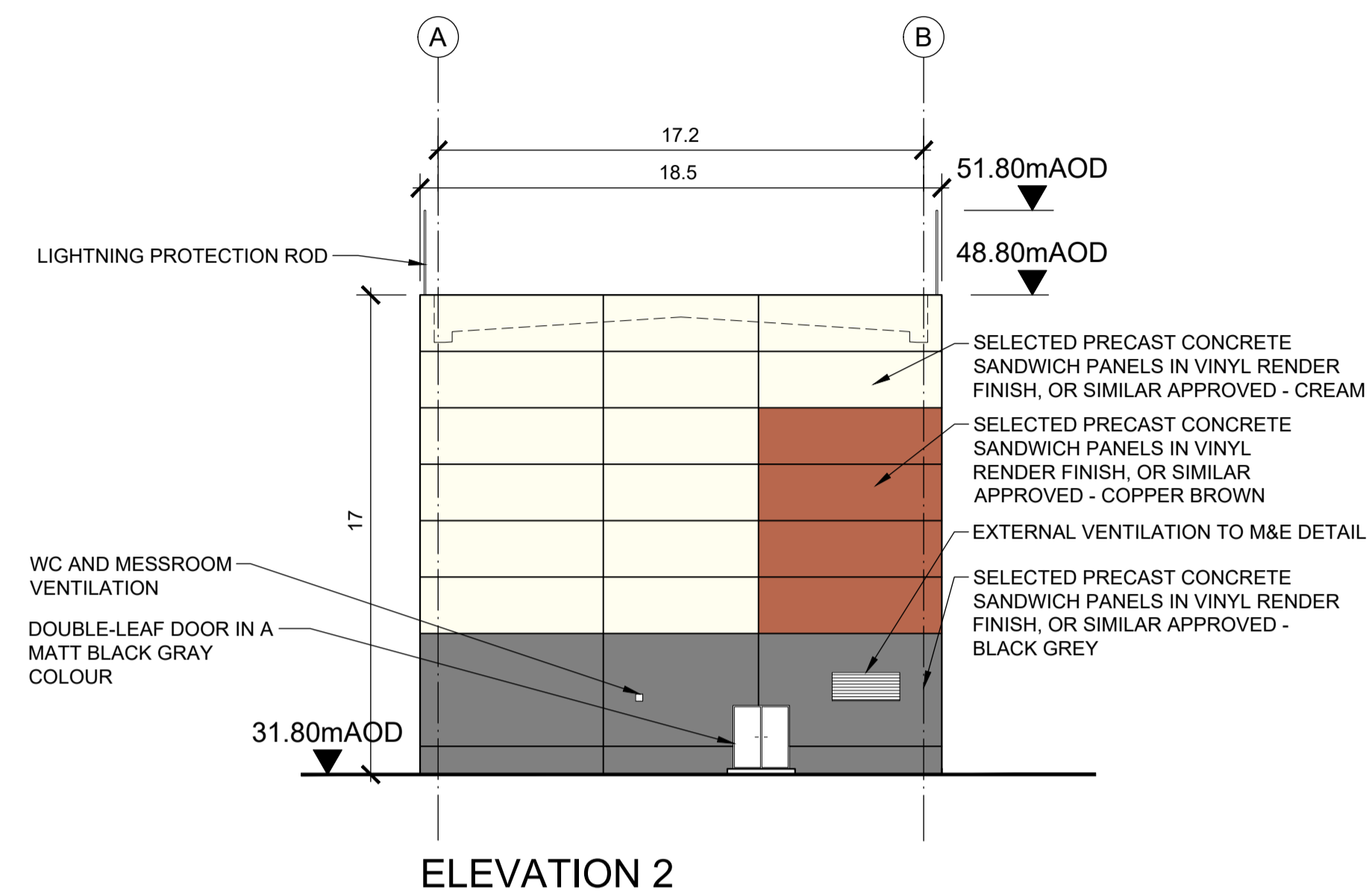
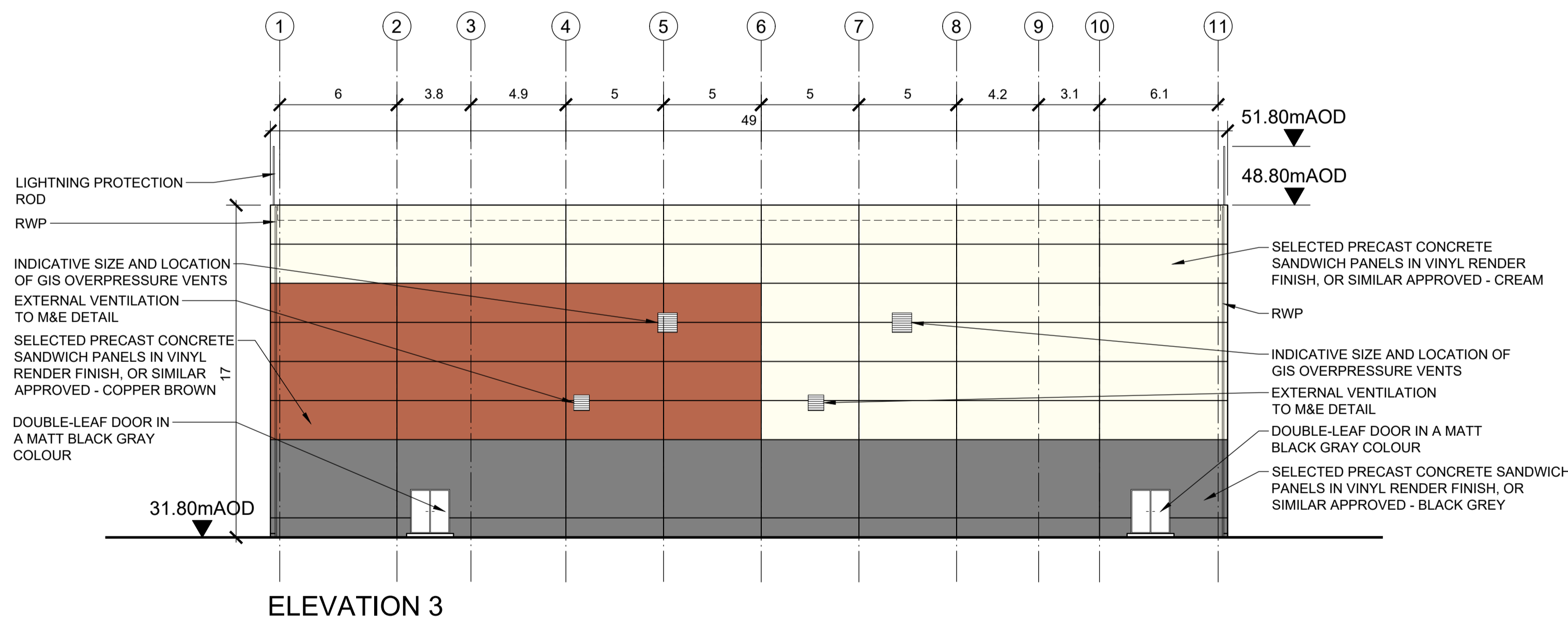


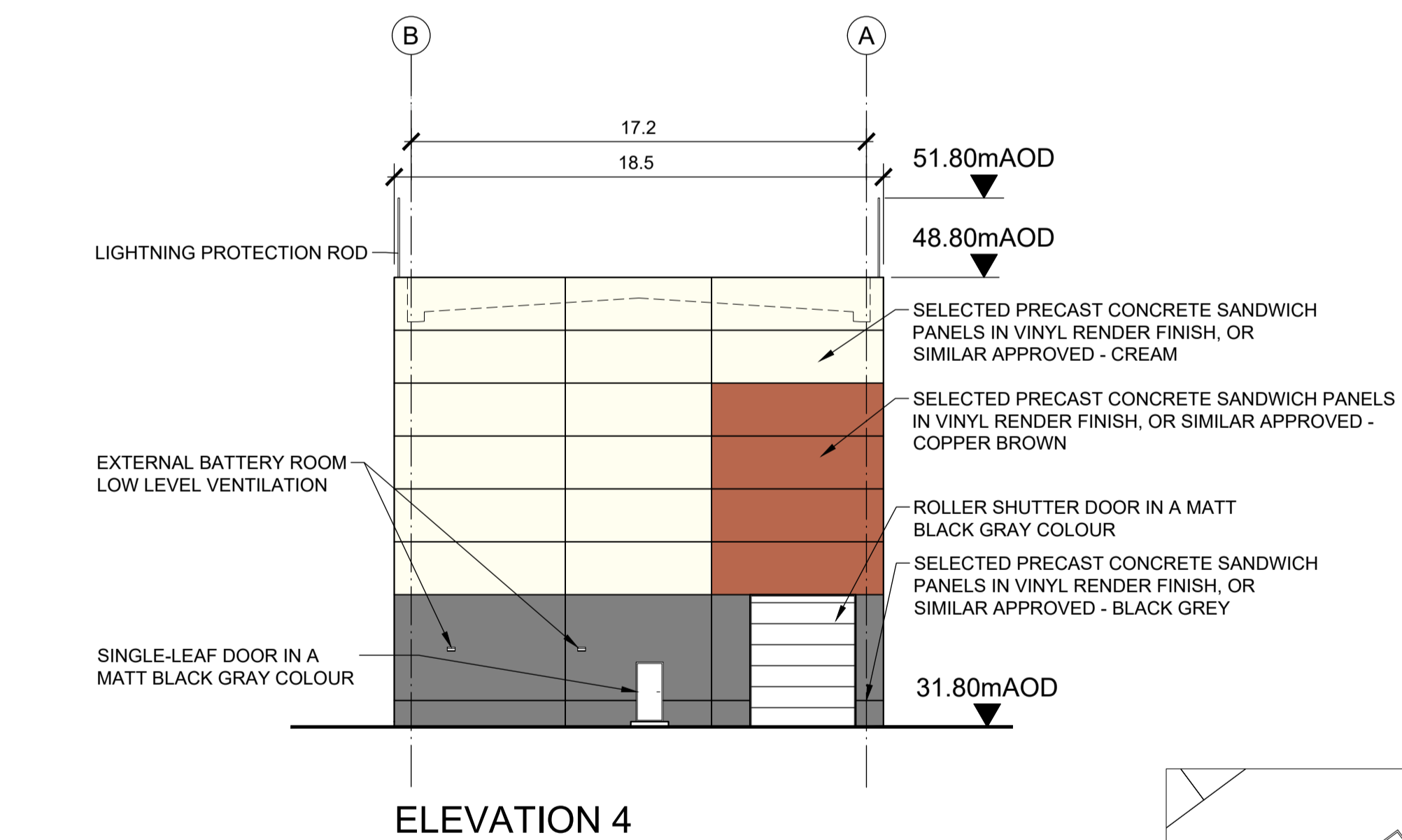
ELEVATION 1



ELEVATION 2



ELEVATION 3

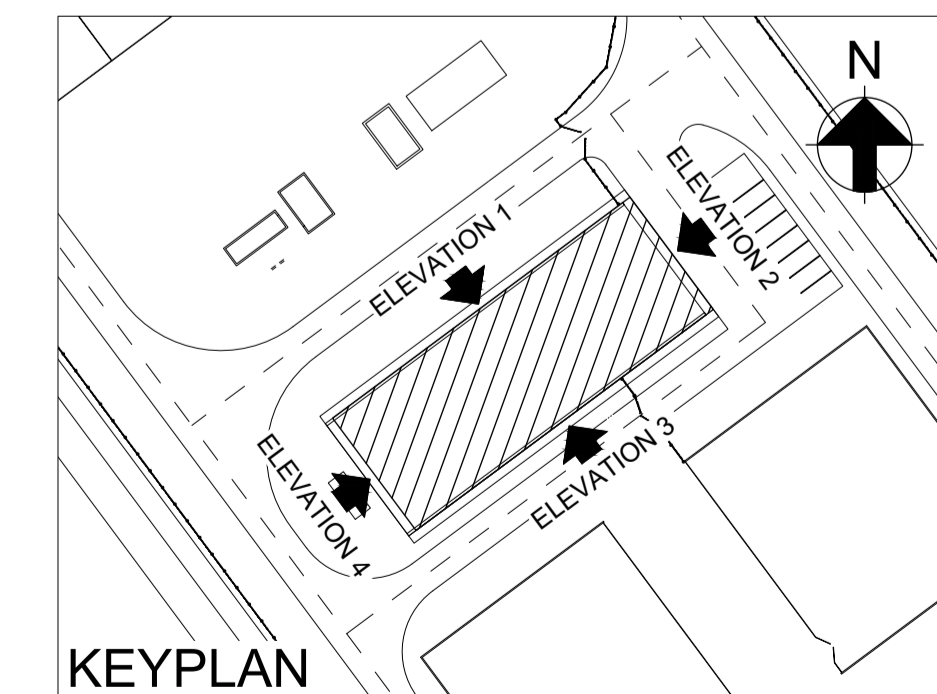
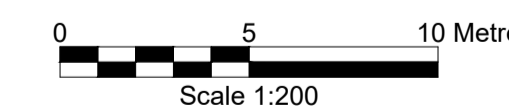


ELEVATION 4



THIS DRAWING HAS BEEN UPDATED TO REFLECT THE REVISED BUILDING FINISHES AND COLOUR CHANGE WHICH HAS BEEN IN RESPONSE TO RFI SECTION 13 (E), SUBJECT TO FINAL AGREEMENT WITH EIRGRID AND FINGAL COUNTY COUNCIL. THE SUBSTATION COLOUR SCHEME/FINISH HAS BEEN UPDATED WITH DARK, LIGHT AND MID TONE CEMENT, OR SIMILAR EQUIVALENT.

THE SUBSTATION COLOUR SCHEME/FINISH HAS BEEN ADJUSTED FOLLOWING THE ADOPTION OF THE FLEMINGTON LAP AND THE FINGAL COUNTY COUNCIL SUBMISSION, TO REFLECT A FUTURE SCENARIO THAT IS MORE URBAN EDGE THAN THE CURRENT RURAL HINTERLAND SCENARIO.



NOTES:

- DRAWING BASED ON EIRGRID DRAWING OFD-SSS-503-R00-002.
- LOUVRES, AOD'S AND VENTS ARE SHOWN INDICATIVELY. M&E DESIGN TO DETAIL REQUIREMENTS.

Rev	Date	By	Chkd	Appd
C02	08.06.26	LB	GG	SF
C01	23.04.24	EG	MO	COD

ARUP
One Albert Quay
Cork, Ireland
Tel +353 (0)21 422 3200
www.arup.com

Client
North Irish Sea Array Windfarm Ltd.
NISA
North Irish Sea Array

Project Title
North Irish Sea Array
Offshore Windfarm

Drawing Title
Grid Facility
Compensation Substation GIS Building
Elevations

Scale at A1	1:200
Role	Civil
Suitability	A2 - APPROVED FOR PLANNING
Arup Job No	281240
Name	281240-ARP-ONS-GF-DR-PL-1007
Rev	C02