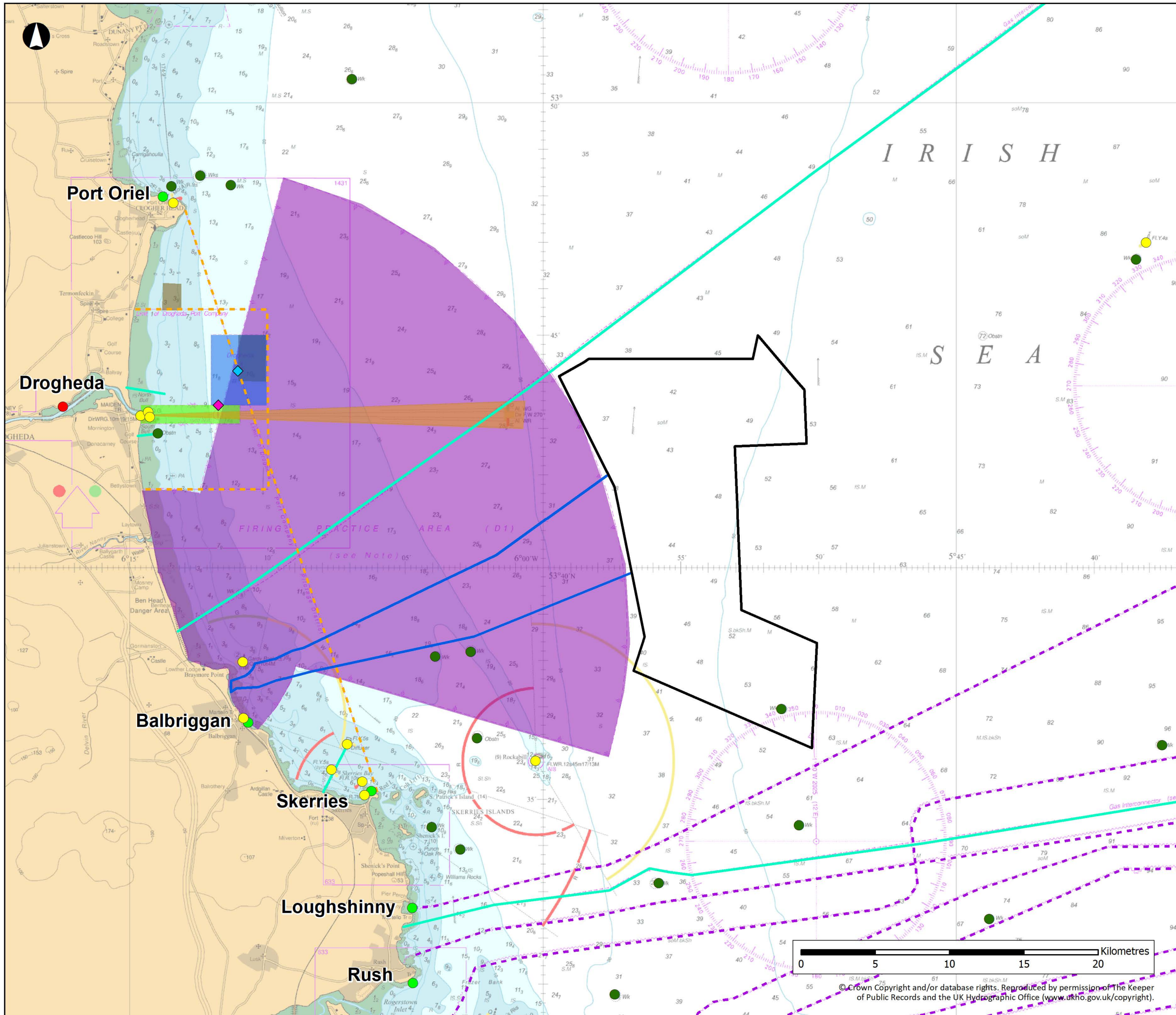


Volume 7A - Figures

# Chapter 17

## Shipping and Navigation



- Array Area
- Offshore Export Cable Corridor
- Navigational Features**
- Key Aid to Navigation
- Port
- Harbour
- Pilot Boarding Station
- Reported Anchorage
- Wreck or Obstruction
- Drogheda Port Limits
- Subsea Pipeline
- Subsea Cable
- Drogheda Leading Lights
- Anchorage Area
- Spoil Ground
- Military PEXA
- Fishing Prohibited Area


# NISA

North Irish Sea Array

ARUP GObE

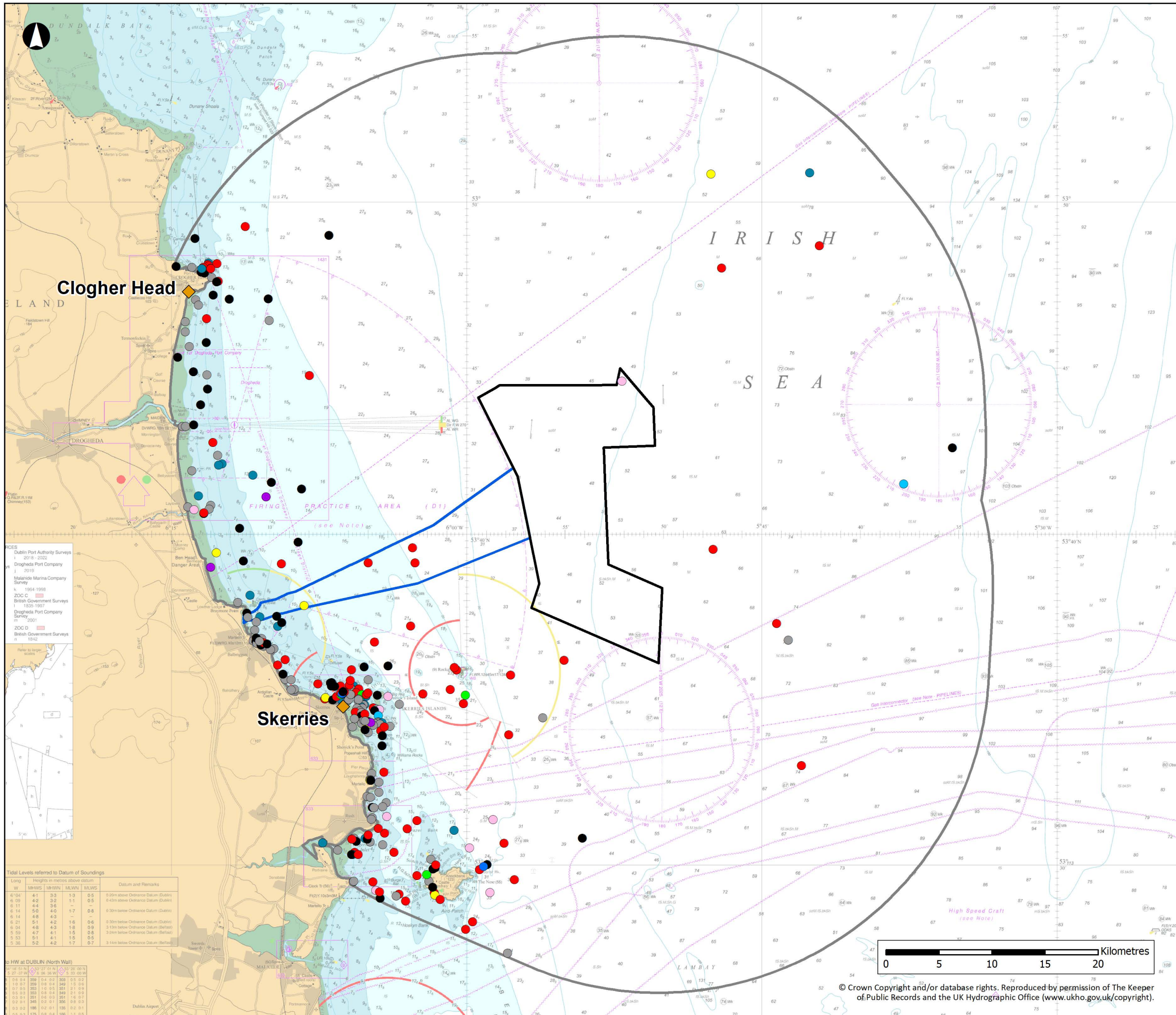
**Project**  
**North Irish Sea Array**  
**Offshore Wind Farm**

**Figure Title**  
**Key Navigational Features**



<b>Job No:</b> 281240	<b>Datum:</b> WGS84 <b>Projection:</b> Mercator
<b>Date:</b> March 2026	<b>Figure No:</b>
<b>Scale:</b> 1:250,000 @A3	A17.1
<b>Status:</b> Issue	

© Crown Copyright and/or database rights. Reproduced by permission of The Keeper of Public Records and the UK Hydrographic Office ([www.ukho.gov.uk/copyright](http://www.ukho.gov.uk/copyright)).



- Array Area
  - Offshore Export Cable Corridor
  - Shipping and Navigation Study Area
  - ◆ RNLi Stations
- RNLi Incident Type
- Adverse Conditions
  - Capsize
  - Collision
  - Grounding
  - Machinery Failure
  - Other
  - Person in Danger
  - Sail Failure
  - Unspecified
  - Vessel May be in Trouble

# NISA

North Irish Sea Array

ARUP GoBe

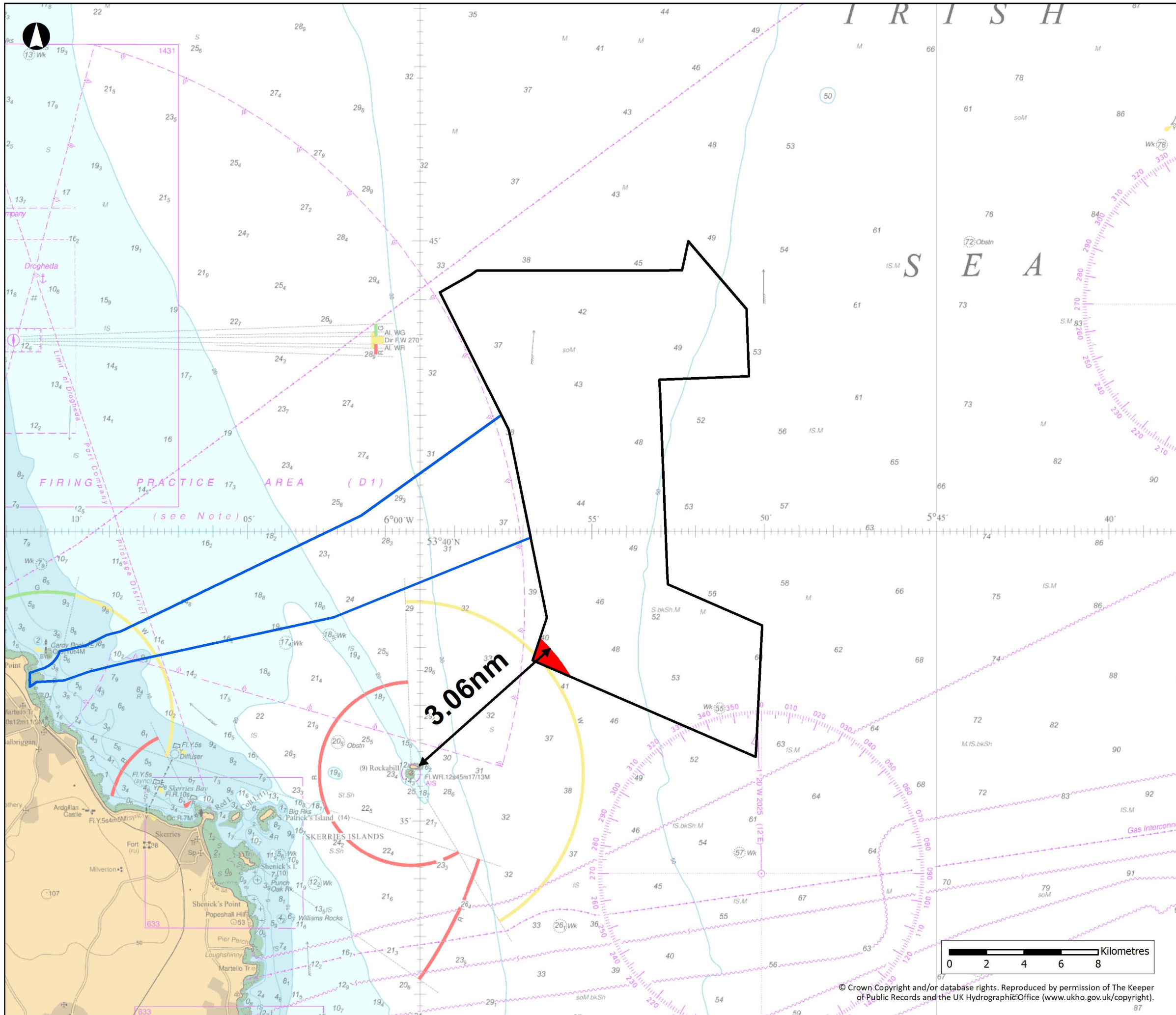
Project  
**North Irish Sea Array  
Offshore Wind Farm**




Figure Title  
**RNLi Incidents by Incident  
Type (2015-2024)**



Job No: 281240	Datum: WGS84 Projection: Mercator
Date: March 2026	Figure No:
Scale: 1:350,000 @A3	A17.2
Status: Issue	

© Crown Copyright and/or database rights. Reproduced by permission of The Keeper of Public Records and the UK Hydrographic Office ([www.ukho.gov.uk/copyright](http://www.ukho.gov.uk/copyright)).



-  Array Area
-  Offshore Export Cable Corridor
-  Structure Exclusion Zone

# NISA

North Irish Sea Array

ARUP GObE

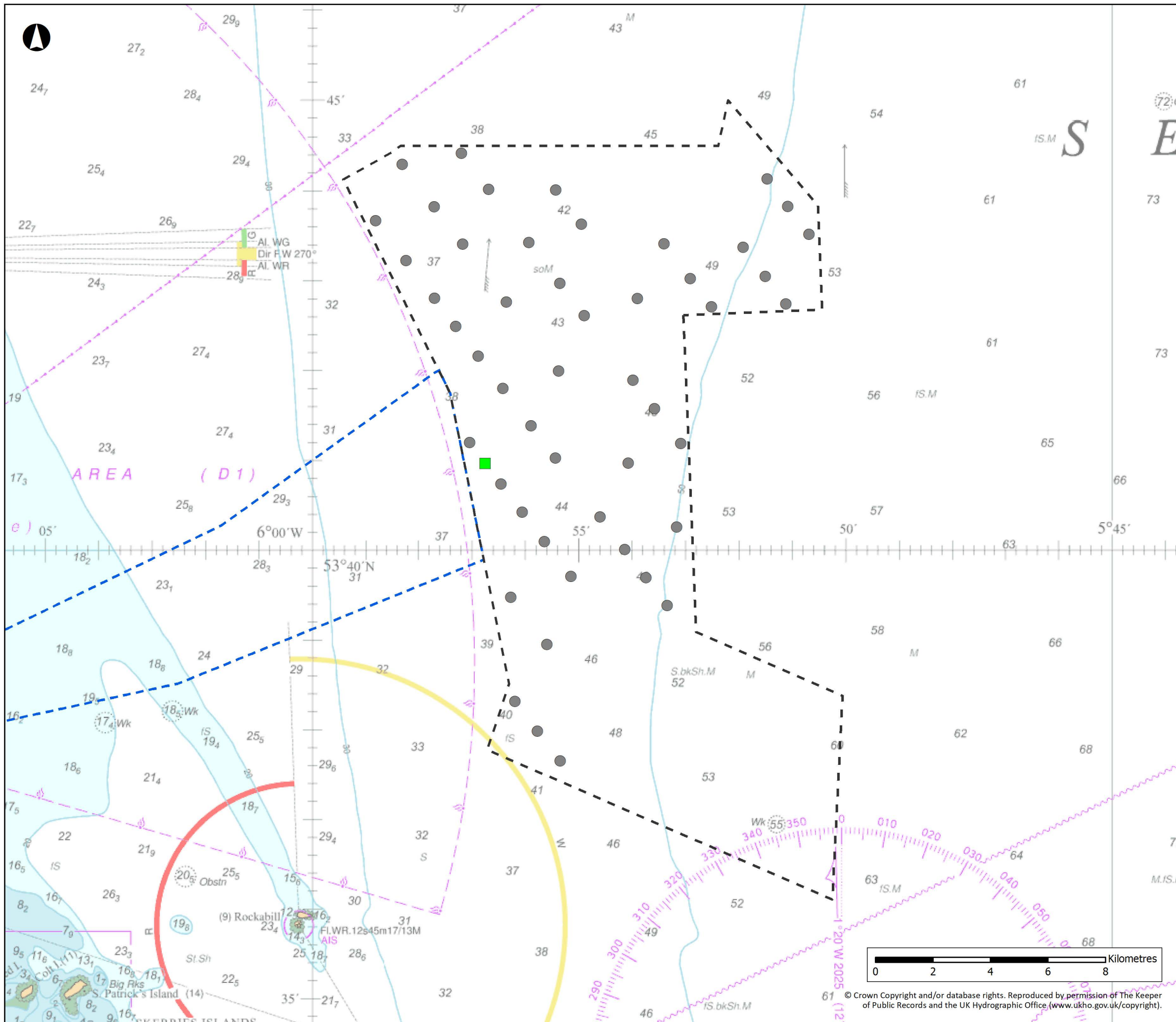
Project  
**North Irish Sea Array  
 Offshore Wind Farm**

Figure Title  
**Structure Exclusion Zone**



<b>Job No:</b> 281240	<b>Datum:</b> WGS84 <b>Projection:</b> Mercator
<b>Date:</b> March 2026	<b>Figure No:</b>
<b>Scale:</b> 1:200,000 @A3	<b>A17.3</b>
<b>Status:</b> Issue	

© Crown Copyright and/or database rights. Reproduced by permission of The Keeper of Public Records and the UK Hydrographic Office (www.ukho.gov.uk/copyright).



Array Area  
 Offshore Export Cable Corridor  
 Indicative Layout  
 WTG  
 OSP

# NISA

North Irish Sea Array

## ARUP GObE

**Project**  
**North Irish Sea Array**  
**Offshore Wind Farm**

**Figure Title**  
**Layout for Shipping and**  
**Navigation (Project Option 1)**

<b>Job No:</b> 281240	<b>Datum:</b> WGS84 <b>Projection:</b> Mercator
<b>Date:</b> March 2026	<b>Figure No:</b>
<b>Scale:</b> 1:130,000 @A3	<b>A17.4</b>
<b>Status:</b> Issue	

© Crown Copyright and/or database rights. Reproduced by permission of The Keeper of Public Records and the UK Hydrographic Office (www.ukho.gov.uk/copyright).