



macroworks

**NISA**

*North Irish Sea Array*

# VOLUME 7C2 LVIA PHOTOMONTAGES

North Irish Sea Array Grid Facility

This book contains imagery for the viewpoints chosen for the LVIA study

June 2026



LVIA | TVIA | Landscape Design | Visibility Analysis | Glint and Glare | Verified Photomontages | CGI | Shadow Flicker Analysis

EIAR Volume	Description
Volume 1: Non-Technical Summary	
Volume 2: Introductory Chapters	
Volume 3: Offshore Chapters	
Volume 4: Onshore Chapters	
Volume 5: Wider Scheme Aspect	
Volume 6: Summary Chapters	
Volume 7A: Figures	
<b>Volume 7C: Photomontages</b>	
Volume 7C1	2026 SLVIA Photomontages (NISA Offshore Wind Farm)
Volume 7C2	2026 LVIA Photomontages (NISA Grid Facility)
Volume 8: Appendices (Introductory)	
Volume 9: Appendices (Offshore)	
Volume 10: Appendices (Onshore)	
Volume 11: Appendices (Wider Scheme)	
Volume 12: Appendices (Summary)	

### Volume 7C2: 2026 LVIA Photomontages: North Irish Sea Array Grid Facility - Full Index of Imagery

Viewpoint Locations	Title
Figure A29.7c	Viewpoint Locations for the Grid Facility
Viewpoint 48	Existing View + Outline View
Viewpoint 48	Montage View + Mitigated View
Viewpoint 49	Existing View + Outline View - NB: There is no Montage or Mitigated View as there is no visibility from this viewpoint
Viewpoint 50	Existing View + Outline View
Viewpoint 50	Montage View + Mitigated View
Viewpoint 51	Existing View + Outline View
Viewpoint 51	Montage View + Mitigated View
Viewpoint 52	Existing View + Outline View
Viewpoint 52	Montage View
Viewpoint 53	Existing View + Outline View
Viewpoint 53	Montage View + Mitigated View
Viewpoint 54	Existing View + Outline View
Viewpoint 54	Montage View + Mitigated View
Viewpoint 55	Existing View + Outline View
Viewpoint 55	Montage View + Mitigated View

# INDEX

**VP48: Flemington Lane southwest of site**

Page 1: Existing View + Outline View  
Page 2: Montage View + Mitigated View

**VP49: Bremore Cottages southeast of site**

Page 1: Existing View + Outline View

**NB - There is no Montage or Mitigated Montage View as the proposed grid facility is not visible from this viewpoint**

**VP50: R132 northeast of site**

Page 1: Existing View + Outline View  
Page 2: Montage View + Mitigated View

**VP51: Knocknagin Road north of site**

Page 1: Existing View + Outline View  
Page 2: Montage View + Mitigated View

**VP52: Flemington Road northwest of site**

Page 1: Existing View + Outline View  
Page 2: Montage View

**VP53: Flemington Cemetery**

Page 1: Existing View + Outline View  
Page 2: Montage View + Mitigated View

**VP54: Flemington Road west of site**

Page 1: Existing View + Outline View  
Page 2: Montage View + Mitigated View

**VP55: Flemington Lane south of site**

Page 1: Existing View + Outline View  
Page 2: Montage View + Mitigated View



**Legend**

-  Grid Facility Boundary
-  Viewpoint Locations
-  3 km Extent

**NISA**  
North Irish Sea Array

**ARUP** **GoBe**  
Icons for accessibility: wheelchair, hearing aid, etc.

**Project**  
**North Irish Sea Array Offshore Wind Farm**

**Figure Title**  
**Viewpoint Locations for the Grid Facility**

**Job No:** 0000

**Date:** 2024/05/01

**Scale:** 1:20,000

**Status:** Final

**Figure No:**

**A29.7c**

Source: Esri, Maxar, Earthstar Geographics, and the GIS User Community

Existing View



Outline View  
 indicating physical position and scale of the  
 proposed development irrespective of screening



These are 80° panoramic montages captured and presented in accordance with the guidance set by the British Landscape Institute 2011 - Advice Note 01/11.

To view these panoramas on a flat surface one must move from left to right along its length whilst maintaining a perpendicular viewing direction and the specified correct viewing distance of 30cm. To see this entire panoramic scene in reality would necessitate turning one's head through 40°.

Easting (ITM):	718230	Lens:	50mm / Full Frame Sensor	Date:	20/01/2023
Northing (ITM):	764482	Camera:	Canon 1-D Mark II digital SLR	Time:	14:23
Direction of View	34° E of Grid North	Camera Height:	1.7m Above Ground Level		
Angle of View:	80°				

Montage View  
Pre-Mitigation



Montage View  
With Mitigation Established



These are 80° panoramic montages captured and presented in accordance with the guidance set by the British Landscape Institute 2011 - Advice Note 01/11.

To view these panoramas on a flat surface one must move from left to right along its length whilst maintaining a perpendicular viewing direction and the specified correct viewing distance of 30cm. To see this entire panoramic scene in reality would necessitate turning one's head through 40°.

Easting (ITM):	718230	Lens:	50mm / Full Frame Sensor	Date:	20/01/2023
Northing (ITM):	764482	Camera:	Canon 1-D Mark II digital SLR	Time:	14:23
Direction of View	34° E of Grid North	Camera Height:	1.7m Above Ground Level		
Angle of View:	80°				



 NISA Grid Facility (Proposed)

Please Note: There is no Montage or Mitigated Montage View as the proposed NISA Grid Facility is not visible from this viewpoint

These are 80° panoramic montages captured and presented in accordance with the guidance set by the British Landscape Institute 2011 - Advice Note 01/11.

To view these panoramas on a flat surface one must move from left to right along its length whilst maintaining a perpendicular viewing direction and the specified correct viewing distance of 30cm. To see this entire panoramic scene in reality would necessitate turning one's head through 40°.

Easting (ITM):	719210	Lens:	50mm / Full Frame Sensor	Date:	20/01/2023
Northing (ITM):	764719	Camera:	Canon 1-D Mark II digital SLR	Time:	14:32
Direction of View:	62° W of Grid North	Camera Height:	1.7m Above Ground Level		
Angle of View:	80°				

Existing View



Outline View  
 indicating physical position and scale of the  
 proposed development irrespective of screening



These are 80° panoramic montages captured and presented in accordance with the guidance set by the British Landscape Institute 2011 - Advice Note 01/11.

To view these panoramas on a flat surface one must move from left to right along its length whilst maintaining a perpendicular viewing direction and the specified correct viewing distance of 30cm. To see this entire panoramic scene in reality would necessitate turning one's head through 40°.

Easting (ITM):	718892	Lens:	50mm / Full Frame Sensor	Date:	20/01/2023
Northing (ITM):	765183	Camera:	Canon 1-D Mark II digital SLR	Time:	14:40
Direction of View	143° W of Grid North	Camera Height:	1.7m Above Ground Level		
Angle of View:	80°				

Montage View  
Pre-Mitigation



Montage View  
With Mitigation Established



These are 80° panoramic montages captured and presented in accordance with the guidance set by the British Landscape Institute 2011 - Advice Note 01/11.

To view these panoramas on a flat surface one must move from left to right along its length whilst maintaining a perpendicular viewing direction and the specified correct viewing distance of 30cm. To see this entire panoramic scene in reality would necessitate turning one's head through 40°.

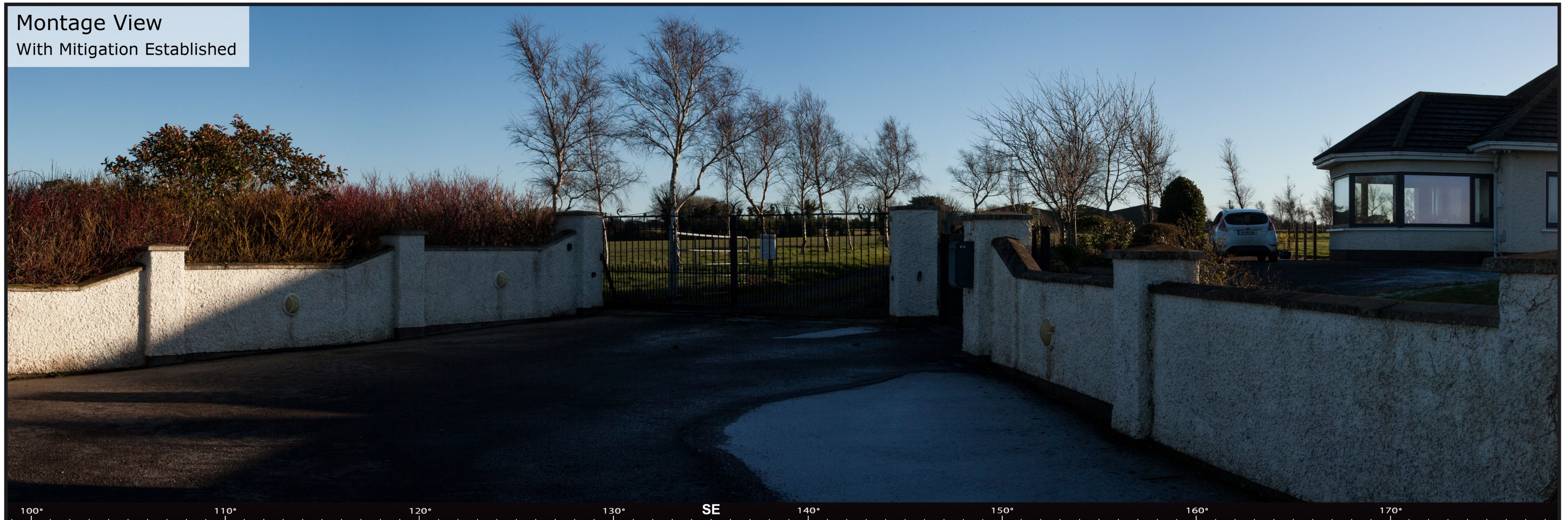
Easting (ITM):	718892	Lens:	50mm / Full Frame Sensor	Date:	20/01/2023
Northing (ITM):	765183	Camera:	Canon 1-D Mark II digital SLR	Time:	14:40
Direction of View	143° W of Grid North	Camera Height:	1.7m Above Ground Level		
Angle of View:	80°				



These are 80° panoramic montages captured and presented in accordance with the guidance set by the British Landscape Institute 2011 - Advice Note 01/11.

To view these panoramas on a flat surface one must move from left to right along its length whilst maintaining a perpendicular viewing direction and the specified correct viewing distance of 30cm. To see this entire panoramic scene in reality would necessitate turning one's head through 40°.

Easting (ITM):	718074	Lens:	50mm / Full Frame Sensor	Date:	20/01/2023
Northing (ITM):	765730	Camera:	Canon 1-D Mark II digital SLR	Time:	14:47
Direction of View	139° E of Grid North	Camera Height:	1.7m Above Ground Level		
Angle of View:	80°				



These are 80° panoramic montages captured and presented in accordance with the guidance set by the British Landscape Institute 2011 - Advice Note 01/11.

To view these panoramas on a flat surface one must move from left to right along its length whilst maintaining a perpendicular viewing direction and the specified correct viewing distance of 30cm. To see this entire panoramic scene in reality would necessitate turning one's head through 40°.

Easting (ITM):	718074	Lens:	50mm / Full Frame Sensor	Date:	20/01/2023
Northing (ITM):	765730	Camera:	Canon 1-D Mark II digital SLR	Time:	14:47
Direction of View	139° E of Grid North	Camera Height:	1.7m Above Ground Level		
Angle of View:	80°				



These are 80° panoramic montages captured and presented in accordance with the guidance set by the British Landscape Institute 2011 - Advice Note 01/11.

To view these panoramas on a flat surface one must move from left to right along its length whilst maintaining a perpendicular viewing direction and the specified correct viewing distance of 30cm. To see this entire panoramic scene in reality would necessitate turning one's head through 40°.

Easting (ITM):	717295	Lens:	50mm / Full Frame Sensor	Date:	20/01/2023
Northing (ITM):	765215	Camera:	Canon 1-D Mark II digital SLR	Time:	14:51
Direction of View	109° E of Grid North	Camera Height:	1.7m Above Ground Level		
Angle of View:	80°				



These are 80° panoramic montages captured and presented in accordance with the guidance set by the British Landscape Institute 2011 - Advice Note 01/11.

To view these panoramas on a flat surface one must move from left to right along its length whilst maintaining a perpendicular viewing direction and the specified correct viewing distance of 30cm. To see this entire panoramic scene in reality would necessitate turning one's head through 40°.

Easting (ITM):	717295	Lens:	50mm / Full Frame Sensor	Date:	20/01/2023
Northing (ITM):	765215	Camera:	Canon 1-D Mark II digital SLR	Time:	14:51
Direction of View	109° E of Grid North	Camera Height:	1.7m Above Ground Level		
Angle of View:	80°				

Existing View



Outline View  
 indicating physical position and scale of the proposed development irrespective of screening

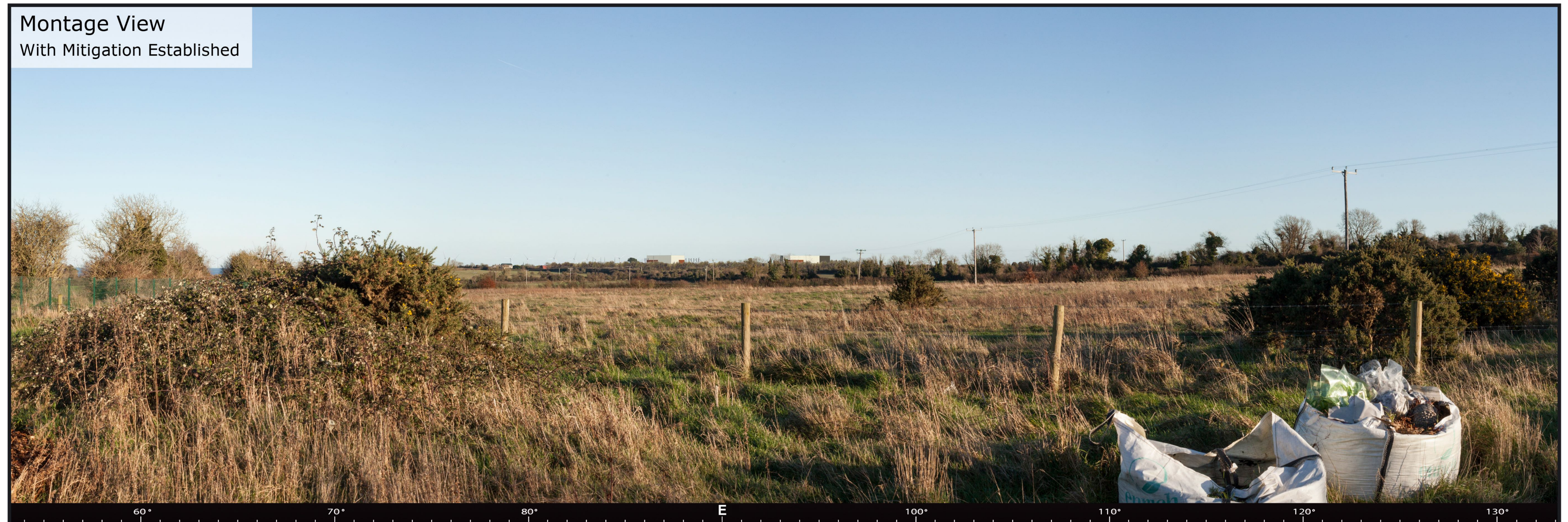


- NISA Offshore Wind Farm (Proposed)
- NISA Grid Facility (Proposed)

These are 80° panoramic montages captured and presented in accordance with the guidance set by the British Landscape Institute 2011 - Advice Note 01/11.

To view these panoramas on a flat surface one must move from left to right along its length whilst maintaining a perpendicular viewing direction and the specified correct viewing distance of 30cm. To see this entire panoramic scene in reality would necessitate turning one's head through 40°.

Easting (ITM):	717497	Lens:	50mm / Full Frame Sensor	Date:	20/01/2023
Northing (ITM):	764946	Camera:	Canon 1-D Mark II digital SLR	Time:	14:58
Direction of View	93° E of Grid North	Camera Height:	1.7m Above Ground Level		
Angle of View:	80°				



These are 80° panoramic montages captured and presented in accordance with the guidance set by the British Landscape Institute 2011 - Advice Note 01/11.

To view these panoramas on a flat surface one must move from left to right along its length whilst maintaining a perpendicular viewing direction and the specified correct viewing distance of 30cm. To see this entire panoramic scene in reality would necessitate turning one's head through 40°.

Easting (ITM):	717497	Lens:	50mm / Full Frame Sensor	Date:	20/01/2023
Northing (ITM):	764946	Camera:	Canon 1-D Mark II digital SLR	Time:	14:58
Direction of View	93° E of Grid North	Camera Height:	1.7m Above Ground Level		
Angle of View:	80°				



These are 80° panoramic montages captured and presented in accordance with the guidance set by the British Landscape Institute 2011 - Advice Note 01/11.

To view these panoramas on a flat surface one must move from left to right along its length whilst maintaining a perpendicular viewing direction and the specified correct viewing distance of 30cm. To see this entire panoramic scene in reality would necessitate turning one's head through 40°.

Easting (ITM):	717539	Lens:	50mm / Full Frame Sensor	Date:	20/01/2023
Northing (ITM):	764499	Camera:	Canon 1-D Mark II digital SLR	Time:	15:05
Direction of View	64° E of Grid North	Camera Height:	1.7m Above Ground Level		
Angle of View:	80°				



These are 80° panoramic montages captured and presented in accordance with the guidance set by the British Landscape Institute 2011 - Advice Note 01/11.

To view these panoramas on a flat surface one must move from left to right along its length whilst maintaining a perpendicular viewing direction and the specified correct viewing distance of 30cm. To see this entire panoramic scene in reality would necessitate turning one's head through 40°.

Easting (ITM):	717539	Lens:	50mm / Full Frame Sensor	Date:	20/01/2023
Northing (ITM):	764499	Camera:	Canon 1-D Mark II digital SLR	Time:	15:05
Direction of View	64° E of Grid North	Camera Height:	1.7m Above Ground Level		
Angle of View:	80°				

Existing View



Outline View  
 indicating physical position and scale of the  
 proposed development irrespective of screening



These are 80° panoramic montages captured and presented in accordance with the guidance set by the British Landscape Institute 2011 - Advice Note 01/11.

To view these panoramas on a flat surface one must move from left to right along its length whilst maintaining a perpendicular viewing direction and the specified correct viewing distance of 30cm. To see this entire panoramic scene in reality would necessitate turning one's head through 40°.

Easting (ITM):	718997	Lens:	50mm / Full Frame Sensor	Date:	06/06/2023
Northing (ITM):	764630	Camera:	Canon 1-D Mark II digital SLR	Time:	14:42
Direction of View	36° W of Grid North	Camera Height:	1.7m Above Ground Level		
Angle of View:	80°				

Montage View  
Pre-Mitigation



Montage View  
With Mitigation Established



These are 80° panoramic montages captured and presented in accordance with the guidance set by the British Landscape Institute 2011 - Advice Note 01/11.

To view these panoramas on a flat surface one must move from left to right along its length whilst maintaining a perpendicular viewing direction and the specified correct viewing distance of 30cm. To see this entire panoramic scene in reality would necessitate turning one's head through 40°.

Easting (ITM):	718997	Lens:	50mm / Full Frame Sensor	Date:	06/06/2023
Northing (ITM):	764630	Camera:	Canon 1-D Mark II digital SLR	Time:	14:42
Direction of View	36° W of Grid North	Camera Height:	1.7m Above Ground Level		
Angle of View:	80°				